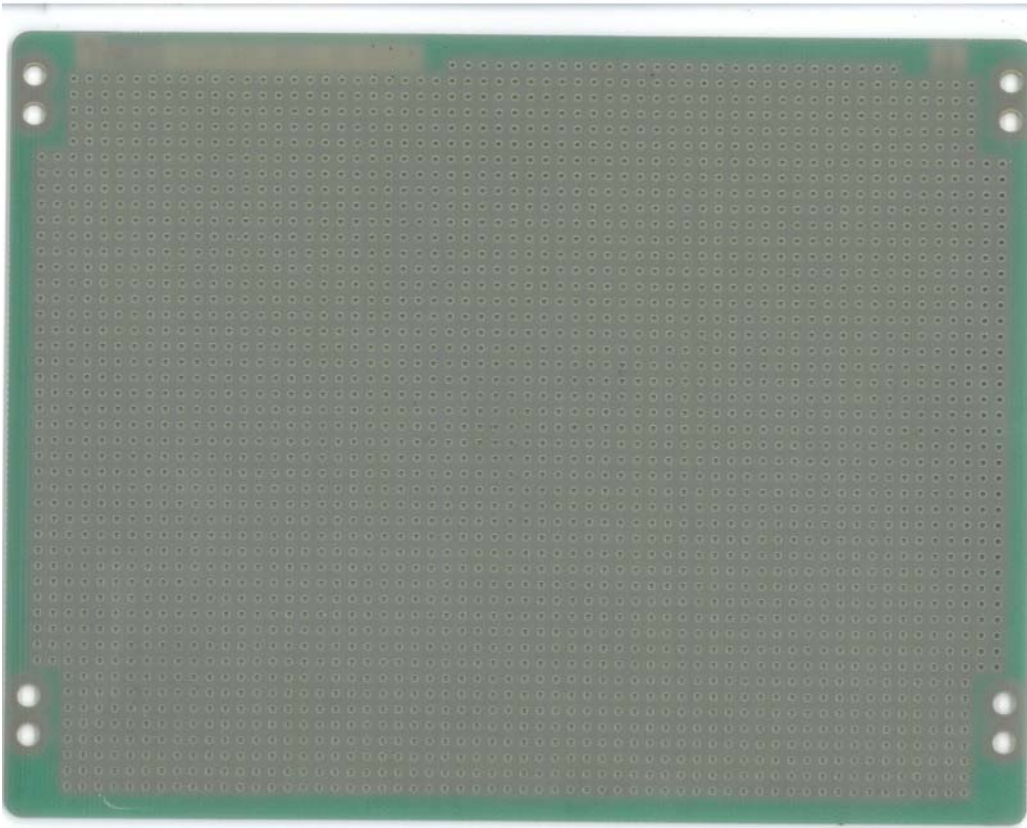


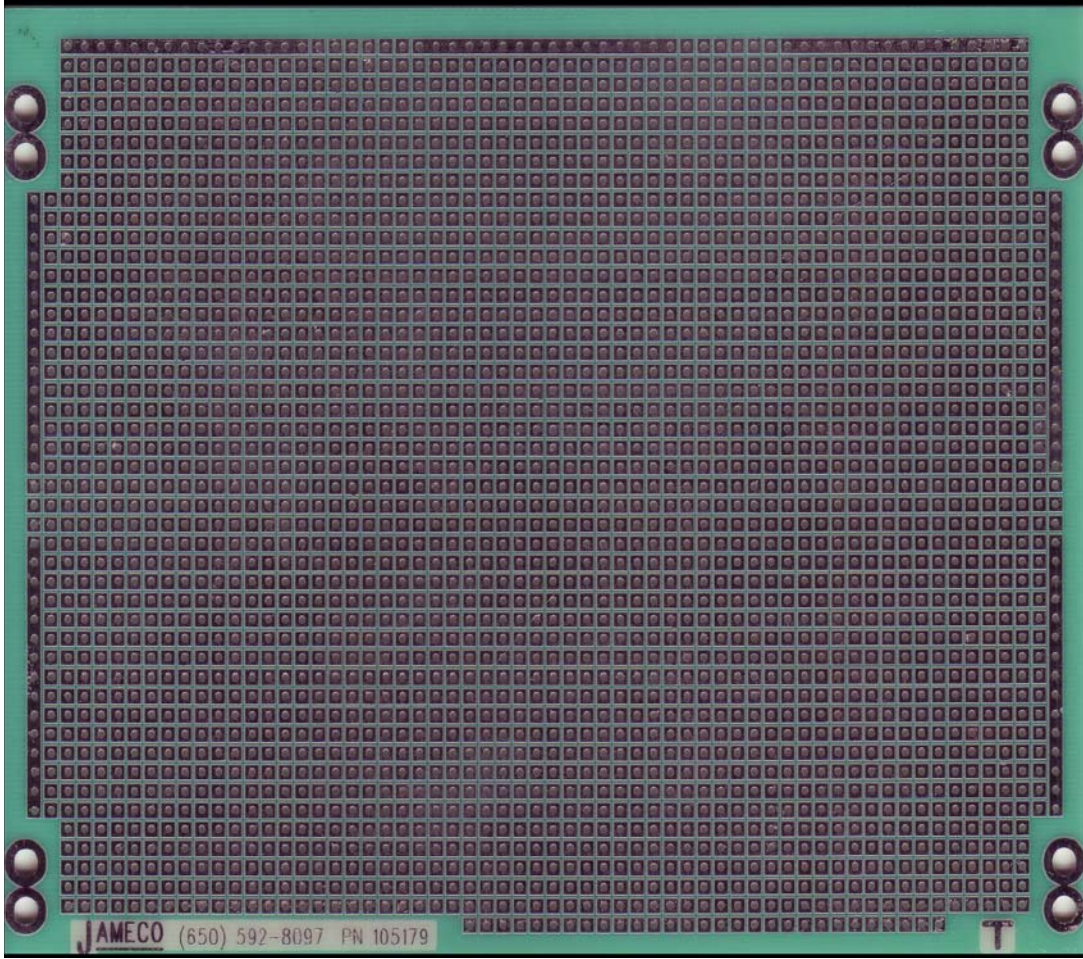
## General-Purpose Prototyping Board

Prototyping boards with punched holes are convenient, economical tools for assembling circuit components as well as cost-effective alternatives to custom designs.

### Features:

- Board Thickness: 0.062"
- Hole Spacing: 0.10"
- Pad size: 0.08"
- PCB Material: Epoxy Glass
- Size (W" x L"): 5.00 x 6.50
- Circuit Pattern: Power/Ground perimeter bus with pad per hole
- Hole Pads: Single-sided
- Number of Holes x Diagonal: 2829 x 0.035"
- Power/Ground Buses: 7
- Number of Mounting Holes x Diameter: 8 x 0.120"
- Weight: 0.13 lbs. (2.08 oz.)
- Fits Enclosure: [18869](#)





JAMECO (650) 592-8097 PN 105179

T