

Distributed by:

**JAMECO**<sup>®</sup>  
ELECTRONICS

**www.Jameco.com ♦ 1-800-831-4242**

The content and copyrights of the attached  
material are the property of its owner.

Jameco Part Number 126797

## LMC555 CMOS Timer

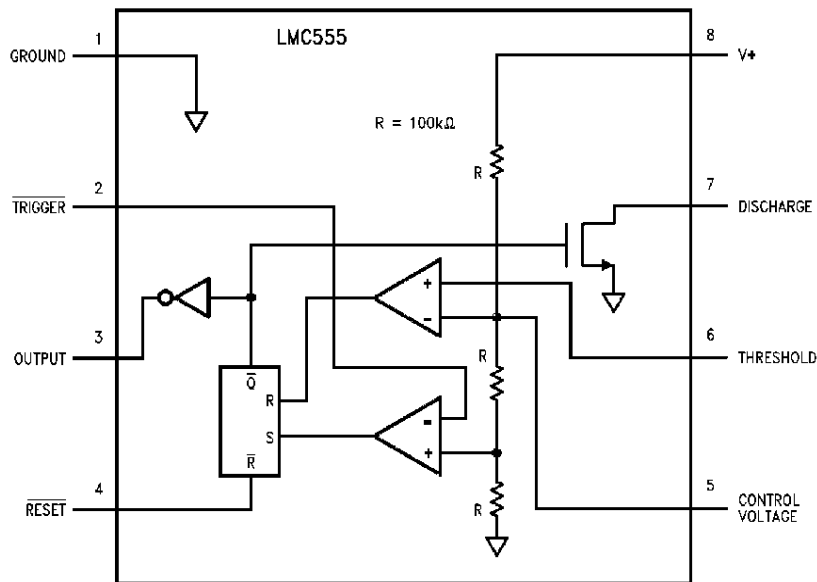
### General Description

The LMC555 is a CMOS version of the industry standard 555 series general purpose timers. It offers the same capability of generating accurate time delays and frequencies but with much lower power dissipation and supply current spikes. When operated as a one-shot, the time delay is precisely controlled by a single external resistor and capacitor. In the astable mode the oscillation frequency and duty cycle are accurately set by two external resistors and one capacitor. The use of National Semiconductor's LMC MOS™ process extends both the frequency range and low supply capability.

### Features

- Less than 1 mW typical power dissipation at 5V supply
- 3 MHz astable frequency capability
- 1.5V supply operating voltage guaranteed
- Output fully compatible with TTL and CMOS logic at 5V supply
- Tested to -10 mA, +50 mA output current levels
- Reduced supply current spikes during output transitions
- Extremely low reset, trigger, and threshold currents
- Excellent temperature stability
- Pin-for-pin compatible with 555 series of timers
- Available in 8 pin MSOP Package

### Block and Connection Diagrams



DS006669-1

(Pinouts for Molded and Metal Can Packages are identical)

Order Number LMC555CH, LMC555CM, LMC555CMM or LMC555CN  
See NS Package Number H08C, M08A, MUA08A, or N08E

## Absolute Maximum Ratings (Note 2)

If Military/Aerospace specified devices are required, please contact the National Semiconductor Sales Office/Distributors for availability and specifications.

Supply Voltage, V8	15V
Input Voltages, V2, V4, V5, V6	-0.3V to $V_S + 0.3V$
Output Voltages, V3, V7	15V
Output Current I3, I7	100 mA
Operating Temperature Range (Note 4)	-40°C to +85°C
Storage Temperature Range	-65°C to +150°C

## Soldering Information

Dual-In-Line Package	
Soldering (10 seconds)	260°C
Small Outline Package (SOIC and MSOP)	
Vapor Phase (60 seconds)	215°C
Infrared (15 seconds)	220°C
See AN-450 "Surface Mounting Methods and Their Effect on Product Reliability" for other methods of soldering surface mount devices.	

## Electrical Characteristics (Notes 1, 2)

Test Circuit, T = 25°C, all switches open, RESET to  $V_S$  unless otherwise noted

Symbol	Parameter	Conditions	Min	Typ	Max	Units (Limits)
I8	Supply Current	$V_S = 1.5V$ $V_S = 5V$ $V_S = 12V$		50 100 150	150 250 400	$\mu A$
V5	Control Voltage	$V_S = 1.5V$ $V_S = 5V$ $V_S = 12V$	0.8 2.9 7.4	1.0 3.3 8.0	1.2 3.8 8.6	V
V7	Discharge Saturation Voltage	$V_S = 1.5V, I_7 = 1 mA$ $V_S = 5V, I_7 = 10 mA$		75 150	150 300	mV
V3 <sub>L</sub>	Output Voltage (Low)	$V_S = 1.5V, I_3 = 1 mA$ $V_S = 5V, I_3 = 8 mA$ $V_S = 12V, I_3 = 50 mA$		0.2 0.3 1.0	0.4 0.6 2.0	V
V3 <sub>H</sub>	Output Voltage (High)	$V_S = 1.5V, I_3 = -0.25 mA$ $V_S = 5V, I_3 = -2 mA$ $V_S = 12V, I_3 = -10 mA$	1.0 4.4 10.5	1.25 4.7 11.3		V
V2	Trigger Voltage	$V_S = 1.5V$ $V_S = 12V$	0.4 3.7	0.5 4.0	0.6 4.3	V
I2	Trigger Current	$V_S = 5V$		10		pA
V4	Reset Voltage	$V_S = 1.5V$ (Note 5) $V_S = 12V$	0.4 0.4	0.7 0.75	1.0 1.1	V
I4	Reset Current	$V_S = 5V$		10		pA
I6	Threshold Current	$V_S = 5V$		10		pA
I7	Discharge Leakage	$V_S = 12V$		1.0	100	nA
t	Timing Accuracy	SW 2, 4 Closed $V_S = 1.5V$ $V_S = 5V$ $V_S = 12V$	0.9 1.0 1.0	1.1 1.1 1.1	1.25 1.20 1.25	ms
$\Delta t/\Delta V_S$	Timing Shift with Supply	$V_S = 5V \pm 1V$		0.3		%/V
$\Delta t/\Delta T$	Timing Shift with Temperature	$V_S = 5V$ -40°C ≤ T ≤ +85°C		75		ppm/°C
f <sub>A</sub>	Astable Frequency	SW 1, 3 Closed $V_S = 12V$	4.0	4.8	5.6	kHz
f <sub>MAX</sub>	Maximum Frequency	Max. Freq. Test Circuit, $V_S = 5V$		3.0		MHz
t <sub>R</sub> , t <sub>F</sub>	Output Rise and Fall Times	Max. Freq. Test Circuit $V_S = 5V, C_L = 10 pF$		15		ns

## Electrical Characteristics (Notes 1, 2)

Test Circuit, T = 25°C, all switches open,  $\overline{\text{RESET}}$  to  $V_S$  unless otherwise noted (Continued)

Symbol	Parameter	Conditions	Min	Typ	Max	Units (Limits)
$t_{PD}$	Trigger Propagation Delay	$V_S = 5V$ , Measure Delay from Trigger to Output		100		ns

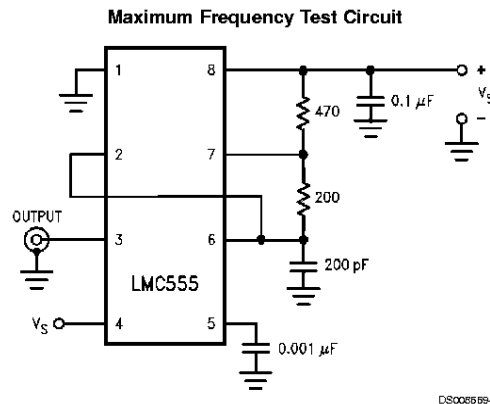
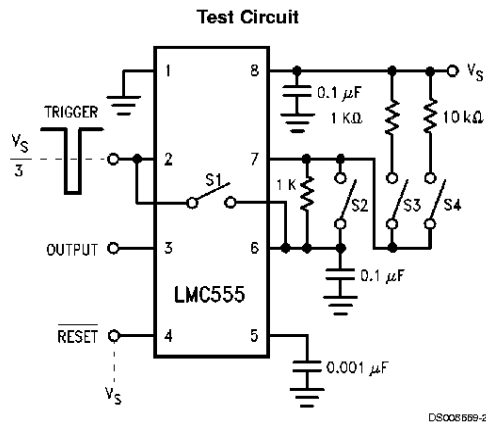
**Note 1:** All voltages are measured with respect to the ground pin, unless otherwise specified.

**Note 2:** Absolute Maximum Ratings indicate limits beyond which damage to the device may occur. Operating Ratings indicate conditions for which the device is functional, but do not guarantee specific performance limits. Electrical Characteristics state DC and AC electrical specifications under particular test conditions which guarantee specific performance limits. This assumes that the device is within the Operating Ratings. Specifications are not guaranteed for parameters where no limit is given, however, the typical value is a good indication of device performance.

**Note 3:** Refer to RETSC555X drawing for specifications of military LMC555H version.

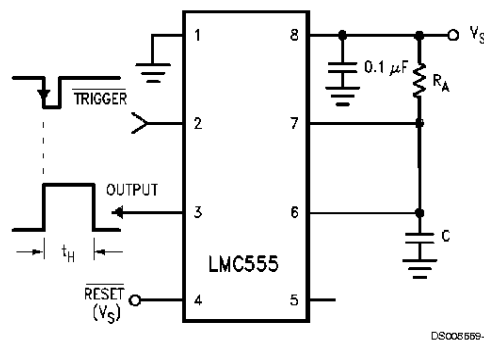
**Note 4:** For operation at elevated temperatures, the device must be derated based on a 150°C maximum junction temperature and a thermal resistance of 111°C/W for the LMC555CN, 167°C/W for the LMC555CH, 169°C/W for the LMC555CM, and 225°C/W for the LMC555MM. Maximum allowable dissipation at 25°C is 1126 mW for the LMC555CN, 755 mW for the LMC555CH, 740 mW for the LMC555CM and 555 mW for the LMC555MM.

**Note 5:** If the  $\overline{\text{RESET}}$  pin is to be used at temperatures of -20°C and below  $V_S$  is required to be 2.0V or greater.



## Typical Applications

### Monostable (One-Shot)



$t_H = 1.1 R_A C$  (Gives time that output is high following trigger)

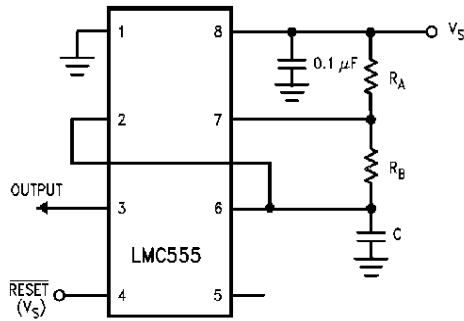
$\overline{\text{RESET}}$  overrides TRIGGER, which can override THRESHOLD. Therefore, the trigger pulse must be shorter than the desired  $t_H$ .

The minimum trigger pulse width is 20 ns.

The minimum reset pulse width is 400 ns.

## Typical Applications (Continued)

### Variable Duty Cycle Oscillator



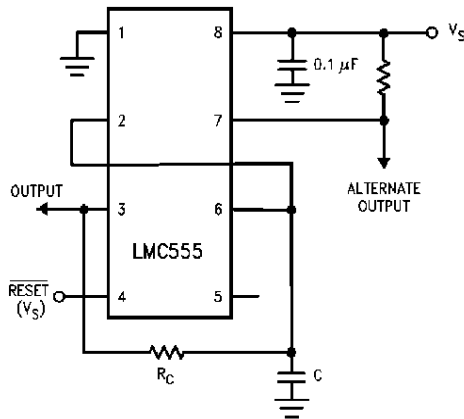
DS00E669-5

(Gives fraction of total period that output is low)

$$f_{osc} = \frac{1.44}{(R_A + 2R_B)C}$$

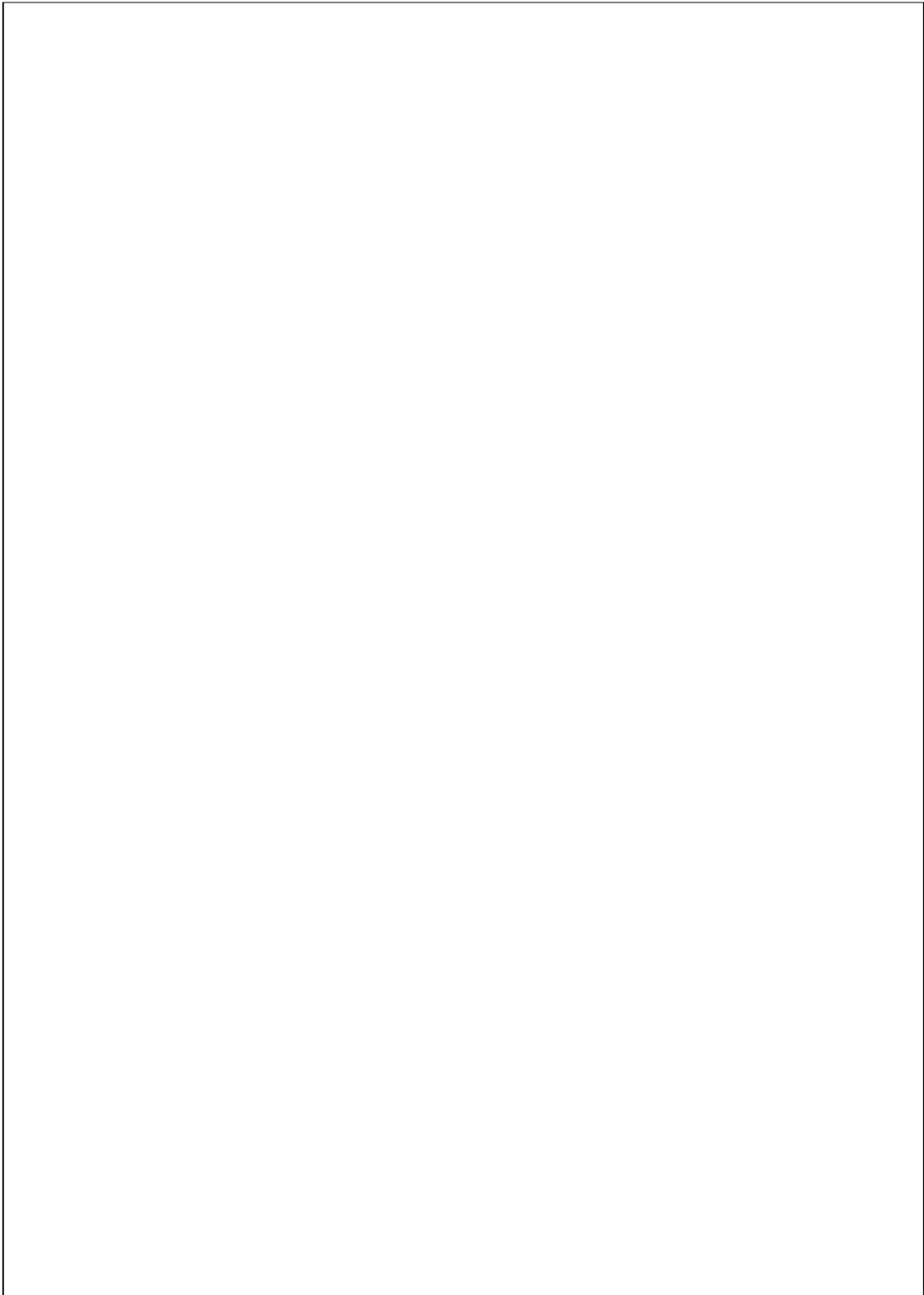
$$\text{Duty Cycle} = \frac{R_B}{R_A + 2R_B}$$

### 50% Duty Cycle Oscillator

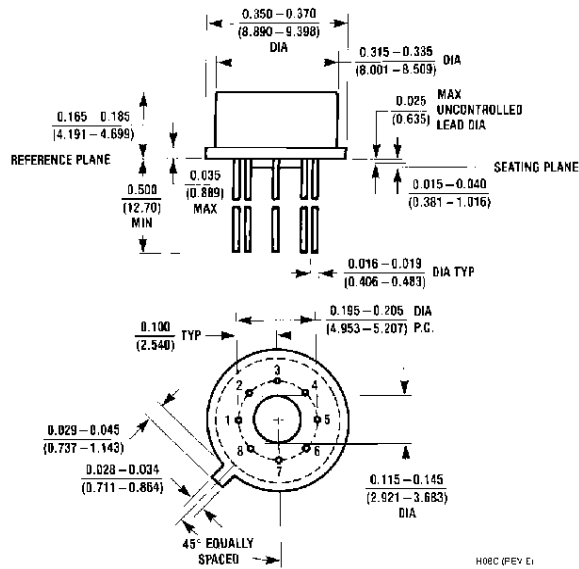


DS00E669-5

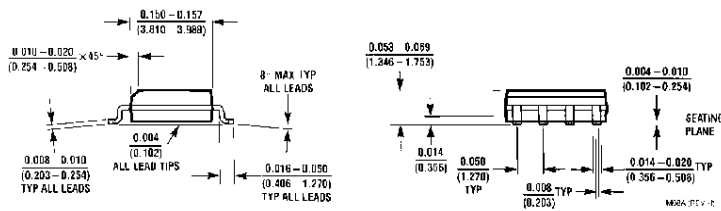
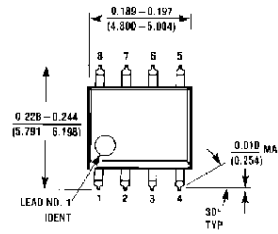
$$f_{osc} = \frac{1}{1.4R_C C}$$



**Physical Dimensions** inches (millimeters)

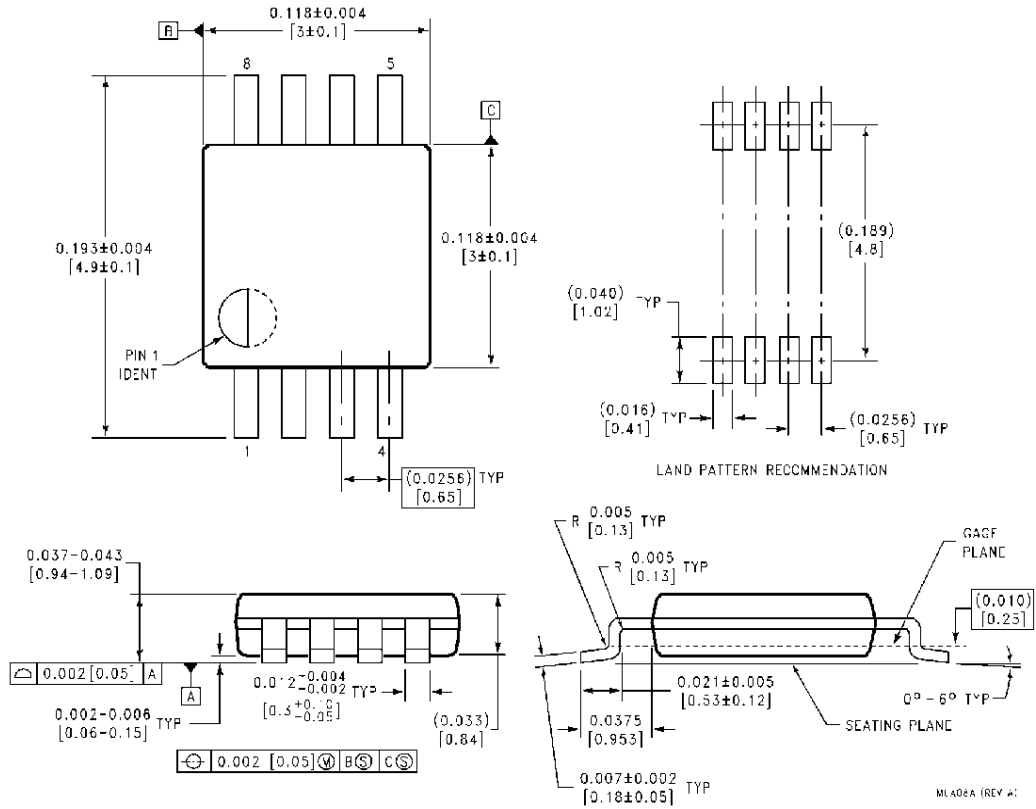


**8-Lead TO-5 Metal Can Package (H)**  
**Order Number LMC555CH**  
**NS Package Number H08C**



**Molded Small Outline (SO) Package (M)**  
**Order Number LMC555CM**  
**NS Package Number M08A**

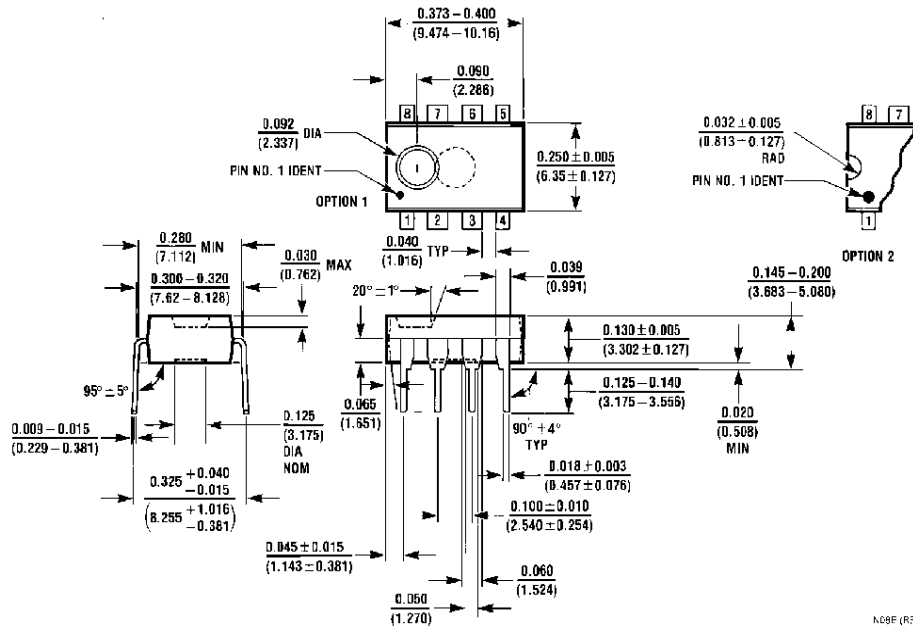
**Physical Dimensions** inches (millimeters) (Continued)



**8-Lead (0.118" Wide) Molded Mini Small Outline Package**  
**Order Number LMC555CMM**  
**NS Package Number MUA08A**

MUA08A (REV A)

**Physical Dimensions** inches (millimeters) (Continued)



**Molded Dual-in-line Package (N)**  
**Order Number LMC555CN**  
**NS Package Number N08E**

N08E (REV F)

**LIFE SUPPORT POLICY**

NATIONAL'S PRODUCTS ARE NOT AUTHORIZED FOR USE AS CRITICAL COMPONENTS IN LIFE SUPPORT DEVICES OR SYSTEMS WITHOUT THE EXPRESS WRITTEN APPROVAL OF THE PRESIDENT OF NATIONAL SEMICONDUCTOR CORPORATION. As used herein:

1. Life support devices or systems are devices or systems which, (a) are intended for surgical implant into the body, or (b) support or sustain life, and whose failure to perform when properly used in accordance with instructions for use provided in the labeling, can be reasonably expected to result in a significant injury to the user.
2. A critical component in any component of a life support device or system whose failure to perform can be reasonably expected to cause the failure of the life support device or system, or to affect its safety or effectiveness.



**National Semiconductor Corporation**  
 1111 West Bardin Road  
 Arlington, TX 76017  
 Tel: 1(800) 272-9959  
 Fax: 1(800) 737-7018

www.national.com

**National Semiconductor Europe**  
 Fax: (+49) 0-180-530 85 86  
 Email: crjwge@tevm2.nsc.com  
 Deutsch Tel: (+49) 0-180-530 85 85  
 English Tel: (+49) 0-180-532 78 32  
 Français Tel: (+49) 0-180-532 93 58  
 Italiano Tel: (+49) 0-180-534 16 80

**National Semiconductor Hong Kong Ltd.**  
 13th Floor, Straight Block,  
 Ocean Centre, 5 Canton Rd.  
 Tsimshatsui, Kowloon  
 Hong Kong  
 Tel: (852) 2737-1600  
 Fax: (852) 2736-9960

**National Semiconductor Japan Ltd.**  
 Tel: 81-043-299-2308  
 Fax: 81-043-299-2408