

Distributed by:

**JAMECO**<sup>®</sup>  
ELECTRONICS

**www.Jameco.com ♦ 1-800-831-4242**

The content and copyrights of the attached  
material are the property of its owner.

Jameco Part Number 177949

# 1N5817 Thru 1N5819



## 1 AMP SCHOTTKY BARRIER RECTIFIER

### FEATURES

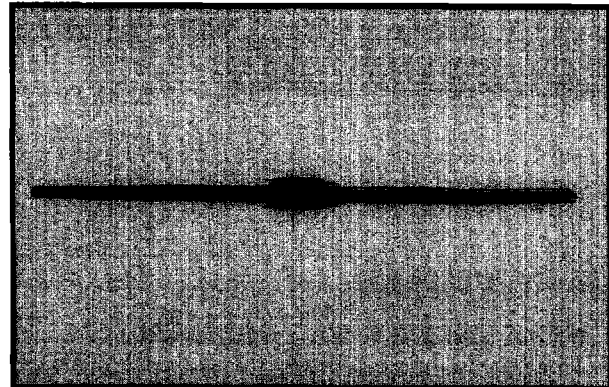
- Metal semiconductor junction with guard ring
- Epitaxial construction
- Low forward voltage drop
- High current capability
- Easily cleaned with freon, alcohol, chloroethene and similar solvents
- Plastic material UL recognized 94V-O
- For use in low voltage, high frequency inverters, free wheeling and polarity protection applications

### Mechanical Data

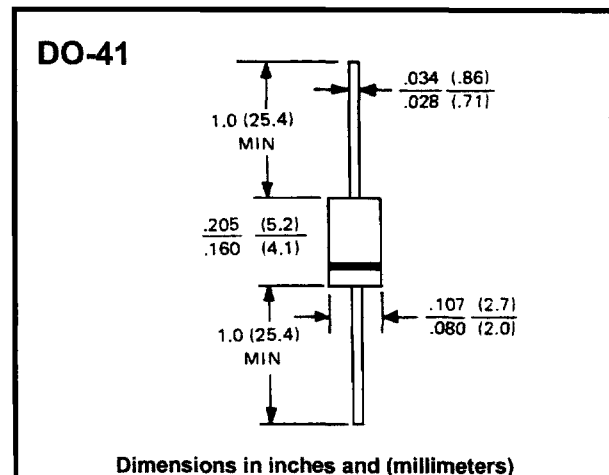
- Case: JEDEC DO-41 molded plastic
- Leads solderable per MIL-STD-202 method 208
- Polarity: color band denotes cathode
- Weight: 0.0211 ounces, 0.34 grams

### Maximum Ratings & Characteristics

- Ratings at 25° C ambient temperature unless otherwise specified
- Single phase, half wave, 60 Hz, resistive or inductive load,
- For capacitive load, derate current by 20%



### Outline Drawing



		1N5817	1N5818	1N5819	Units
Maximum Recurrent Peak Reverse Voltage	$V_{RRM}$	20	30	40	V
Maximum RMS Input Voltage	$V_{RMS}$	14	21	28	V
Maximum DC Blocking Voltage	$V_{DC}$	20	30	40	V
Maximum Average Forward Output Current	$I_{(AV)}$	1.0			A
Peak Forward Surge Current 8.3 ms Single Half-Sine-Wave Superimposed On Rated Load (JEDEC Method)	$I_{FSM}$	25			A
Maximum Forward Voltage Drop	$V_F$	0.450 0.750	0.550 0.875	0.600 0.900	V
Maximum Average DC Reverse Current	$I_R$	1 10			mA
Typical Thermal Resistance*(See Note)	$R_{(THJA)}$	80			°C/W
Typical Junction Capacitance**(See Note)	$C_J$	110			pF
Operating Temperature Range	$T_J$	-65 to +125			°C
Storage Temperature Range	$T_{STG}$	-65 to +125			°C

Note: \* Lead temperature reference is cathode lead .375" (9.5mm) from case

\*\*Measured at 1 MHz and applied reverse voltage of 4.0V DC