

SPECIFICATION FOR APPROVAL

CUSTOMER NAME: A096
DESCRIPTION : AC ADAPTOR
MODEL NO. : GPU410600500WDOO
DESIGNED NO: GQ-ADT41165-0264 I/P: 120VAC 60Hz
O/P: 6VDC 500mA
CUSTOMER PART NO. _____
REVISION. A0

APPROVED BY(PLEASE SIGN)			

DRAWER	CHECKED	APPROVED

ENGINEERING CHANGE REQUEST

ORIGINAL

REVISION

--	--

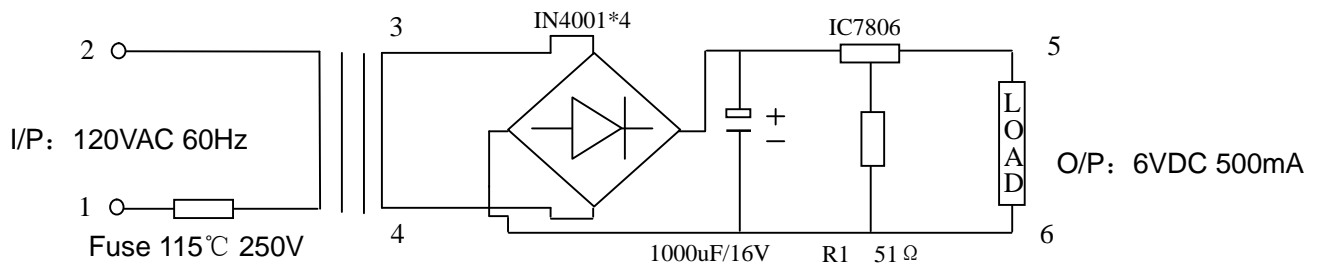
REV	DATE	DESCRIPTION	REVISION OF CAUSES:

DRAWER	CHECKED	APPROVED	CUSTOMER	
			MODEL NO	GPU410600500WD00
			REV	A0
			DATE	2011-06-18
			PAGES	1/10

1.ELECTRICAL PERFORMANCE:

1-1.Primary rated voltage and frequency: 120VAC 60Hz.

1-2.ELECTRICAL CHARACTERISTICS:



1-3.Secondary rated voltage and current:

TEST POINT	FULL LOAD RATED VOLTAGE	RATED CURRENT	VOLTAGE REGULATION	NO LOAD VOLTAGE
5~6	6VDC±5%	500mA		6VDC±5%

1-4.Primary exciting current(I_o): 55 mA rms max,at input 120VAC 60Hz

Loading(I_L): 140 mA rms max.

1-5.D.C.Resistance: Primary: 128 Ω±15%,measured at 25°C

1-6.Empty loss max: 1.2 watts max,at input 120VAC 60Hz

1-7.Temperature rise: 75°C max on primary coil by the resistance method,and 45°C max on the surface of the case by the thermometer method at 25°C ambient,rated load condition.

1-8.Insulation resistance: 500VDC supplied,100M ohms minimum between winding & core.

1-9.HI-pot test: 1250VAC 50Hz for 60Seconds (leakage current 1mA) primary to secondary&core Potential 20% higher may be applied for one second..

500VAC 50Hz for 60Seconds (leakage current 1mA) secondary to core. Potential 20% higher may be applied for one second.

DRAWER	CHECKED	APPROVED	CUSTOMER	
			MODEL NO	GPU410600500WD00
			REV	A0
			DATE	2011-06-18
			PAGES	2/10

1-10. Induce voltage: All secondary opened, primary should withstand 240V 360Hz for 60second without breakdown.

1-11. Life test: In an ambient temperature of 25°C ,90-95% R.H., applying a power source of 120VAC 60Hz to primary, with full load 500mA for 24hours continuously, unit output normally and meet the requirements of item 1-8、 1-9.

1-12. Humidity test: In an ambient temperature of 25±2°C and 90-95% R.H..for 48 hours after 10 minutes out of the oven, the unit should meet item 1-9 requirements, and insulation Resistance shall be 10M ohms minimum.

2. MECHANICAL CHARACTERISTICS:

2-1. Drop test: Dropped freely from 3 feet height onto a concrete floor covered with 1/8 inch vinyl tile 3 times from 3 different surface, the unit should meet the item 1-9

2-2. Strain relief test: At normal position, 20 lbs to output cord for 60 seconds each, there shall be no breakage displacement.

2-3. Bending test: The plug and S/R should withstand weight of 200 gram, swinging from left to right at an angle of 120 degree for 1000 cycles, and 15-20 cycles per minute. The cord shall be conductible.

3. SAFETY STANDARD:

◆ Meet

◇ Approved

◆ UL/CUL

◇ CSA

◇ TUV/CE

◇ BSI/CE

◇ PSE

◇ CQC

◇ CCC

4. INSULATION SYSTEM:

◇ CLASS A (105°C)

◇ CLASS E (120°C)

◆ CLASS B (130°C)

◇ CLASS F (155°C)

DRAWER	CHECKED	APPROVED	CUSTOMER	
			MODEL NO	GPU410600500WD00
			REV	A0
			DATE	2011-06-18
			PAGES	3/10

5. MECHANICAL REQUIRMENTS:

5-1. Appearance: Damage and rusting are not permitted.

6. ENVIROMENTAL CONDITION:

6-1. Operating temperature range: -10°C---+40°C

6-2. Storage temperature range: -20°C---+80°C

6-3. Operation humidity range: 30---85% R.H

7. INSPECTION ON LINE:

7-1. The test items for each produce

- ◆ Primary exciting current
- ◆ Core loss
- ◆ Output voltage
- ◆ Input current and power at rated load
- ◆ Foreign mass by shock
- ◆ Polarity of output plug
- ◆ Hi-pot test
- ◆ Apperance

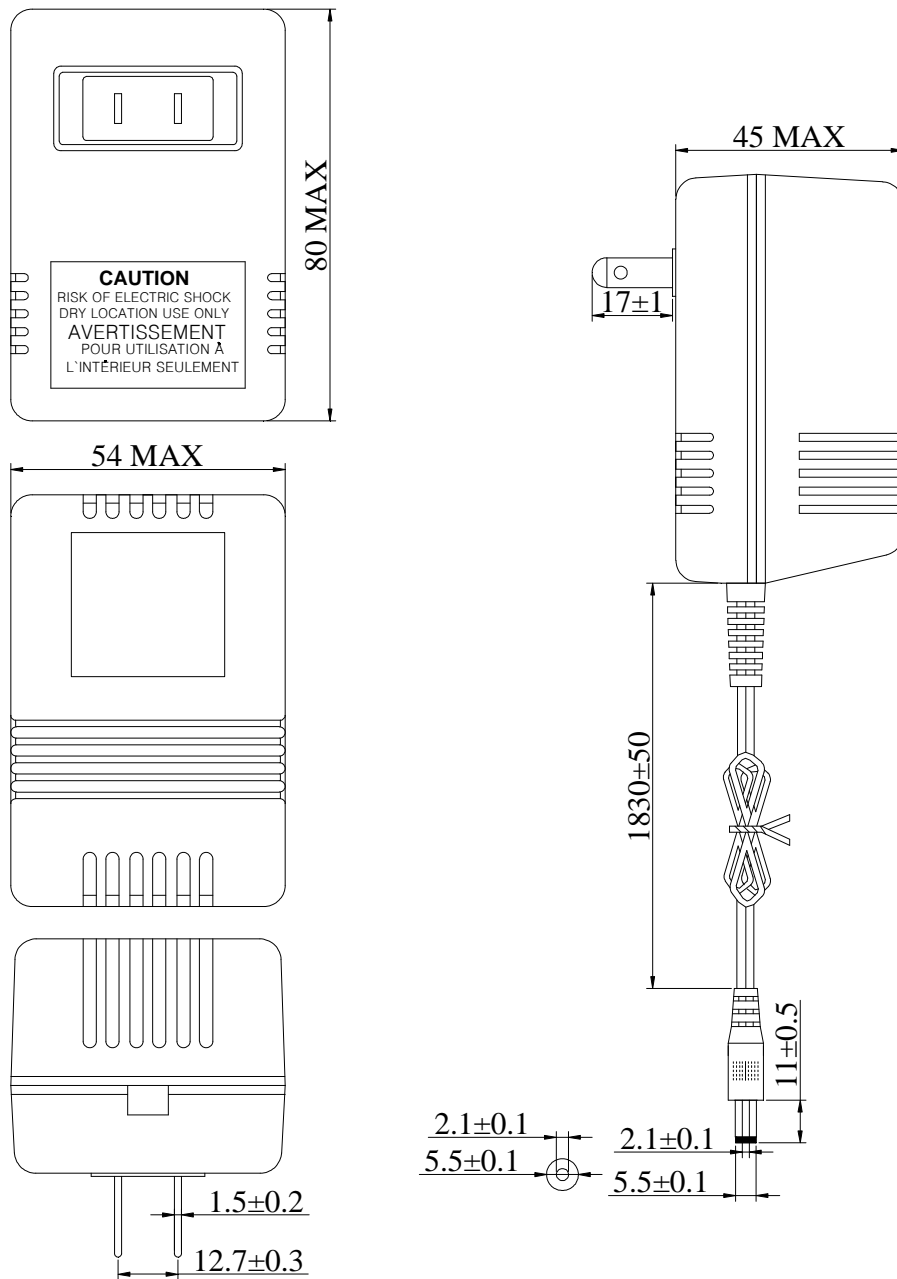
7-2. The test item for part of products:

- ◆ Hum operating at rated load
- ◆ D.C. Resistance
- ◆ Insulation test

8. NET WEIGHT/g

DRAWER	CHECKED	APPROVED	CUSTOMER	
			MODEL NO	GPU410600500WD00
			REV	A0
			DATE	2011-06-18
			PAGES	4/10

9.APPEARANCE DIMENSION: (UNIT: mm)



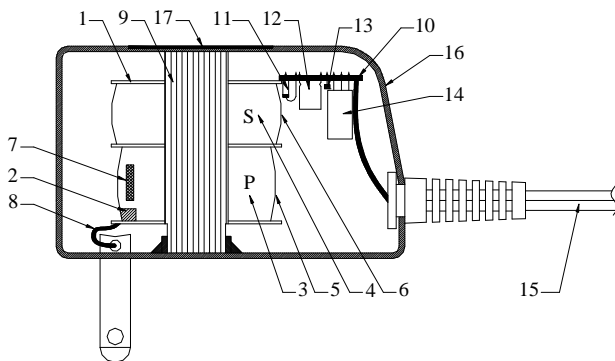
OUTPUT CORD: 2468#24AWG 线长 1.83m

PLUG/DC: $5.5 \pm 0.1 \text{mm} \times 2.1 \pm 0.1 \times 11 \pm 0.5 \text{mm}$

中心为：“+”极

DRAWER	CHECKED	APPROVED	CUSTOMER	
			MODEL NO	GPU410600500WD00
			REV	A0
			DATE	2011-06-18
			PAGES	5/10

10.MATERIAL LIST :



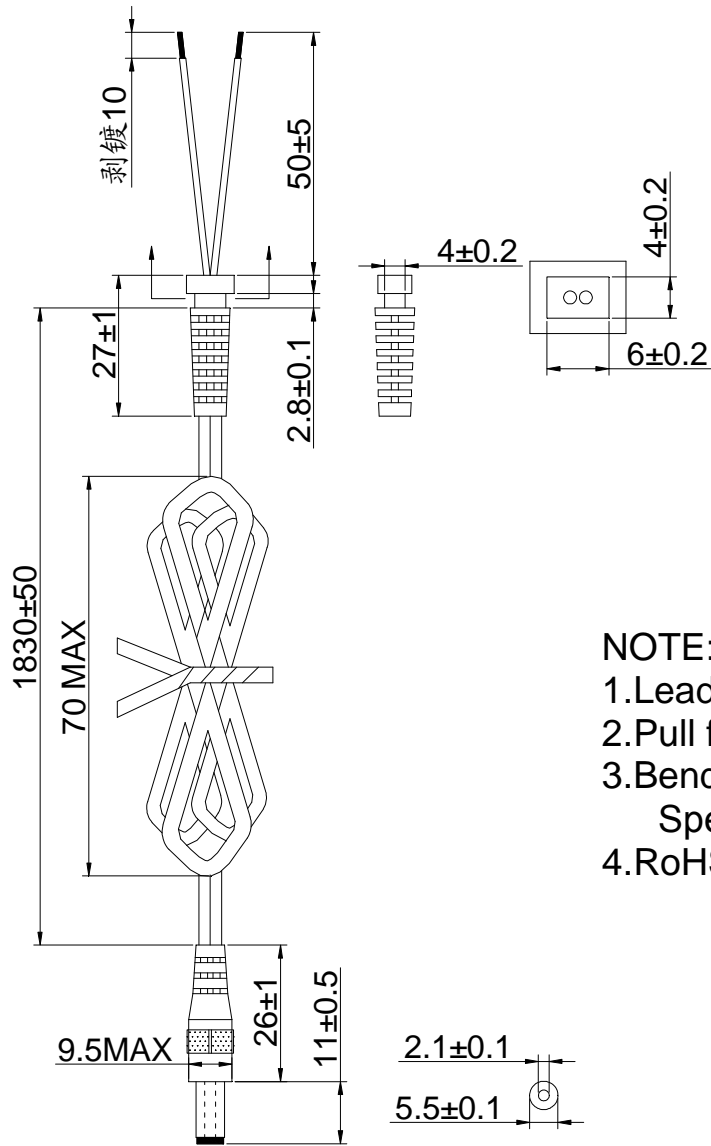
ITEM	PARTS NAME	MATERIAL&SPEC	MANUFATURER	
1.	BOBBIN	PA66 THICK0.71mm MIN	E I DUPONT DE NEMOURS&CO INC.E41938	
2.	Primary Crossover Insulation	ACETATE CLOTH TAPE CLASS B	DUCK SUNG TAPE CO.,LTD.E105147	
3.	PRI.WINDING	2UEW MAGNET WIRE CLASS B	PACIFIC ELECTRIC WIRE & CABLE CO., LTDE201757	
4.	SEC.WINDING	2UEW MAGNET WIRE CLASS B	JUNG SHING WIRE CO., LTD.E174837 FENG CHING METAL CORP E172395	
5.	PRI.OUTER INSULATION	MYLAR TAPE 0.025mm 0.025mm CLASS B	JINGJIANG YAHUA PRESSURE SENSITIVE GLUE CO LTD E165111	
6.	SEC.OUTER INSULATION	MYLAR TAPE 0.025mm 0.025mm CLASS B	JING JIANG JINGYI ADHESIVE PRODUCT CO.,LTD.E246950 SUZHOU MAILADUONA ELECTRIC MATERIAL CO.,LTD.E188295	
7.	PROTECTION	THERMAL CUTOFF 115°C2A 250V	JOINT FORCE METAL RESEARCH & CO LTD. E142267	
8.	LEAD WIRE	UL1015# AWG22	SHENZHEN DONGJU WIRE&CABLE CO.,LTD. E189674	
9.	CORE	E-I LAMINATED SILICON STEEL E-I	BEST LEGEND HUI DINGS LTD.	
10.	RECTIFIER BOARD	P.C.BOARD(94-V0) CLASS 94-V0 1.60mm THICK	KINGBOARD LAMINATES(MACAO COMMERCIAL OFFSHORE) LTD.E123995	
11.	DIODE	SILICON RECTIFIERS IN4001*4	DONGGUAN DE HUI ELECTRONIC CO.,LTD. DICK (SHENZHEN) ELECTRONICS CO., LTD.	
12.	CAPACITOR	ELECTROLYTI C1:1000uF 16V	DONGGUAN DE HUI ELECTRONIC CO.,LTD. JWCO ELECTRONICS CO.,LTD SHENZHEN SAMSON ELECTRONICS TECHNOLOGY CO.,LTD	
13.	RESIST OR CHIP RESIST	电阻 51Ω	DONGGUAN DE HUI ELECTRONIC CO.,LTD. OR OTHER EQUIVALENT.	
14.	IC	IC7806	DONGGUAN DE HUI ELECTRONIC CO.,LTD. OR OTHER EQUIVALENT.	
15.	OUTPUT CORD	2468#24AWG	XIN LONG ENTERPRISE CO.E207567 DESAY WIRE CO.,LTD.E252840/E214500	
16.	ENCLOSURE	41#UL 插 SE-100	SABIC INNOVATIVE PLASTICS JAPAN LLC.E45587	
17.	NAMEPLATE	PET(UL/CSA)OR ALUMINUM	JING XING PRINTING FACTORY MH45133 GUANG MING YOU TONG.MH27610	
NOTE	Varnish	V821A	QUALIPOLY CHEMICAL CORP.E213437	
DRAWER		CHECKED	APPROVED	CUSTOMER
				MODEL NO GPU410600500WD00
				REV A0
				DATE 2011-06-18
				PAGES 6/10

11.SAMPLE TEST DATA:

ITEM	SPEC	SAMPLE					
		#1	#2	#3	#4	#5	#6
PRIMARY EXCITING CURRENT I/P: 120VAC 60Hz	55mA MAX	21					
PRIMARY EXCITING CURRENT I/P: 120VAC 60Hz	140mA MAX	78					
SECONDARY VOLTAGE NO LOAD	6VDC±5%	6.24					
SECONDARY VOLTAGE LOAD: DC 500mA	6VDC±5%	6.05					
Hi-pot test	PRI.TO SEC-CORE	AC 1250V/1mA/50Hz/60second	OK				
	SEC.TO CORE	AC 500V/1mA/50Hz/60second	OK				
DRAWER	CHECKED	APPROVED	CUSTOMER				
			MODEL NO		GPU410600500WD00		
			REV		A0		
			DATE		2011-06-18		
			PAGES		7/10		

12. DC CORD DRAWING:

Unit: mm
单位: (mm)



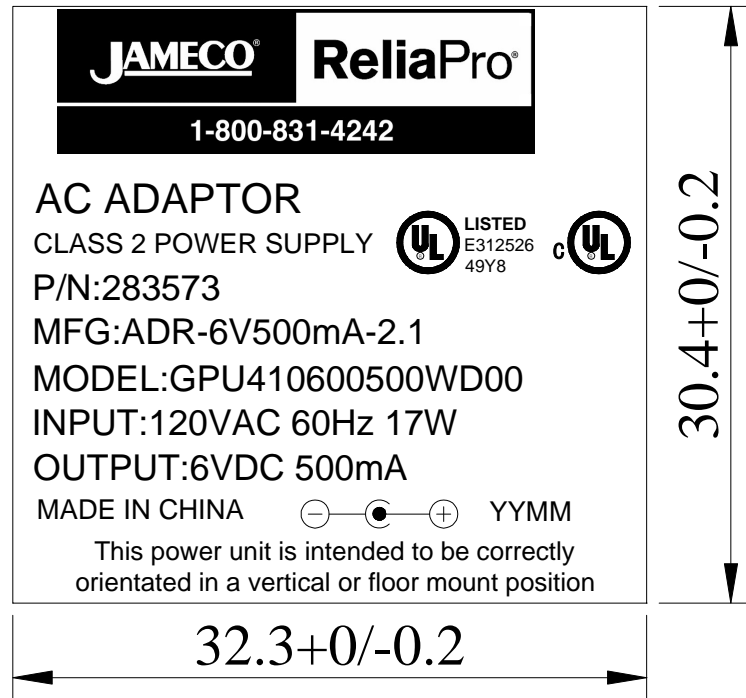
NOTE:

1. Lead wire: AWG24#
2. Pull force: 20LB/1Minute of S/R
3. Bending test: Weight 200g, Angle 120°
Speed 15~20Bends/min ≥ 1000Time
4. RoHS Product

DRAWER	CHECKED	APPROVED	CUSTOMER	
			MODEL NO	GPU410600500WD00
			REV	A0
			DATE	2011-06-18
			PAGES	8/10

13.NAMEPLATE DRAWING:

Unit: mm
单位: (mm)



NOTE:

- 1、PET0.27mm THICK MIN
- 2、银底黑字
- 3、自粘型
- 4、YYMM: 生产周期, YY: 年份, MM: 月份

DRAWER	CHECKED	APPROVED	CUSTOMER	
			MODEL NO	GPU410600500WD00
			REV	A0
			DATE	2011-06-18
			PAGES	9/10