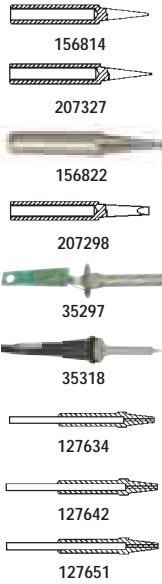
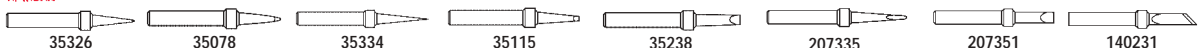


Tips & Replacement Parts for XYTronic Soldering and Desoldering Products



Part No.	Mfr. P/N	Description	For XYTronic Model Numbers (*Legacy Models)											Pricing			
			289VL	130ESD*	200X-200PG	37* (37)-C	AESD DESD	XYTRON	960*	968	99PSDA*	JS2E8*	168-3C	1	10	25	
35326	XY401	Soldering tip - conical bevel 1/32"	✓	✓	✓	✓	✓	✓	✓	✓	✓	✓	✓	✓	\$4.49	\$3.95	\$3.59
35078	XY402	Soldering tip - semi-chisel 1/32"	✓	✓	✓	✓	✓	✓	✓	✓	✓	✓	✓	✓	4.49	3.95	3.59
35334	XY403	Soldering tip - conical sharp 1/64"	✓	✓	✓	✓	✓	✓	✓	✓	✓	✓	✓	✓	4.49	3.95	3.59
35115	XY404	Soldering tip - conical chisel 1/16"	✓	✓	✓	✓	✓	✓	✓	✓	✓	✓	✓	✓	4.49	3.95	3.59
35238	XY405	Soldering tip - semi-chisel wide 1/8"	✓	✓	✓	✓	✓	✓	✓	✓	✓	✓	✓	✓	4.49	3.95	2.95
207335	XY406	Soldering tip - long conical chisel 3/64"	✓	✓	✓	✓	✓	✓	✓	✓	✓	✓	✓	✓	4.49	3.95	2.95
207351	XY410	Soldering tip - chisel 3/16"	✓	✓	✓	✓	✓	✓	✓	✓	✓	✓	✓	✓	4.49	3.95	3.59
140231	XY430	Soldering tip - SMD flat pack 7/32"	✓	✓	✓	✓	✓	✓	✓	✓	✓	✓	✓	✓	6.95	5.95	4.95
156814	XYB01	Soldering tip - sharp conical chisel 1/32"		✓				✓							3.95	3.49	2.95
207327	XYB03	Soldering tip - conical sharp 1/64"		✓				✓							5.95	5.49	4.95
156822	XYB04	Soldering tip - conical sharp 1/16"		✓				✓							3.95	3.49	2.95
207298	XYB05	Soldering tip - semi-wide chisel 1/8"		✓				✓							4.49	3.95	3.59
35297	XY37	Heating element - (nichrome)			✓	✓			✓			✓			12.95	11.95	10.95
35318	XY48	Assembly - 60W w/ nichrome heater			✓	✓			✓			✓			29.95	26.95	23.95
127634	XYD10	Desoldering tip - 1.0mm (.0394")								✓	✓				8.95	7.95	6.95
127642	XYD12	Desoldering tip - 1.2mm (.0472")								✓	✓				8.95	7.95	6.95
127651	XYD15	Desoldering tip - 1.5mm (.0586")								✓	✓				8.95	7.95	6.95

Solder Spool & Iron Stand

- 4 pc. spool stand (some assembly required)
- Size: 6"L x 3.5"W x 3.1"H
- Sponge size: 1.6"W x 2.4"L
- Shaft diameter: 0.6"
- Weight: 2.0 lbs.



Part No.	Description	1	5	25
169551	Spool & iron stand	\$10.95	\$9.95	\$8.95

*Solder Spool Stand — Enter Web Code YAU

600-Watt Solder Pot

Temperature Adjustable

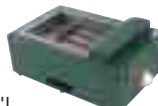
- 2-wire power cord (5'5")
 - Temperature: 0°C to 500°C
 - Self-regulating temperature
 - Input voltage: 110VAC @ 5.5A
 - On-off power switch and LED indicator for heat
 - Holds up to 3 bars of P/N 176057 or 170465, pg 166
 - Size (unit): 6.8"L x 5.5"W x 2.8"H
 - Size (tub): 3.9"L x 1.6"D
 - Weight: 7.4 lbs.
- Includes:** Skimmer and removable dross tray



Part No.	Description	1	5
172276	600-watt solder pots	\$199.95	\$179.95

2000-Watt Solder Pot

- Thermostat control for setting temp. from 50°C to 300°C
- Holds up to 48 bars of P/N 176057 or 170465, pg 166
- 3 conductor pigtail power cord: 5'L
- Input volt.: 110VAC @ 18A, 50-60Hz single phase
- Size (unit): 18.1"L x 11.5"W x 6.0"H
- Size (tub): 12.0"L x 8.0"W x 2.9"H
- Weight: 23.1 lbs.
- One-year warranty



Part No.	Description	1	5
149876	2000-watt solder pot	\$359.95	\$299.95

22-Watt Fume Extractor

Absorbs noxious lead fumes using activated-carbon filter and a high-efficiency fan

- Operate continuously providing filtered air
 - Static ground jack
 - Fuse protected
 - Air flow: 115 CFM
 - Noise: 49dB fan
 - 20VAC, 60Hz, 22 watt
 - Aerodynamic hood design for effective removal of solder fumes
 - Removable carbon-impregnated filter
 - Size: 6.4"W x 4.6"D x 7.9"H
 - Weight: 4.6 lbs.
 - One-year warranty
- Includes:** Detachable power cord



Part No.	Description	1	5	25
120150	Fume extractor	\$49.95	\$45.95	\$39.95
127183	Replace. filters (2/pk)	9.95	8.95	7.95

*Fume Extractors — Enter Web Code HAR

Weller® 20-Watt Fume Extractor

This fume extractor removes flux fumes from the soldering workbench by drawing smoke through an activated carbon filter. With its exceptionally quiet fan, it can process up to 1.37 cubic meters of air per minute and its stand is adjustable allowing it to be set-up in multiple positions.



- Voltage: 120VAC
- Sound level: 45-50dB
- Air consumption: 87-107CFM
- Power consumption: 20W
- Absorption capacity: 1.25 cubic meters to 1.37 cubic meter per minute
- ESD safe
- UL/CUL listed
- Size: 10"L x 6.5"W x 11"H
- Weight: 4.2 lbs.

Part No.	Mfr. Part No.	1	5
684810	WSA350	\$59.95	\$54.95
684828	WSA350F (carbon filter)	7.95	6.95

42-Watt Combination Soldering Station and Fume Extractor

- Power consumption: 42W @ 650°F (soldering iron)
 - Adjustable knob for temperature control: 500°F to 800°F
 - Stability @ idle: ±9°F
 - Max. air volume: 95/115CFM
 - LED indicator for pilot light
 - Electronic zero-voltage switching
 - Input voltage: 100-120VAC @ 60Hz
 - Size: 6.4"W x 7.8"H x 4.7"D
 - Weight: 5.2 lbs.
- Includes:** Soldering iron, iron holder, sponge, carbon activated filter, power cord and manual



Part No.	Mfr. Part No.	1	5
183169	456DLX	\$89.95	\$69.95

Fume Extractor Filters

- For use with GS-630A
- 3-pack carbon filters
- Size: 5" x 5"



Part No.	Description	1	5	25
672579	Replacement filters	\$9.95	\$8.95	\$7.95

See page 197 for NEW Fume Extractor System

*For Complete Specs & Additional Product Listings Search www.Jameco.com/More and Enter Web Code Listed Above