

AC-to-DC Regulated Switching Table-Top Power Supplies

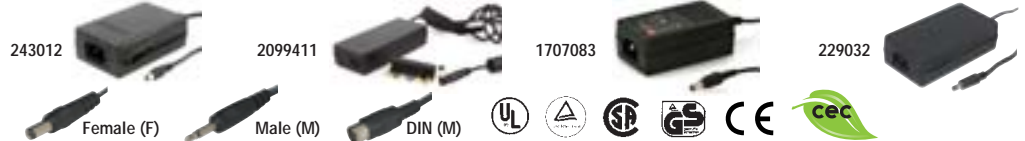
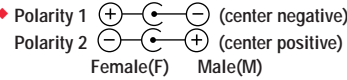


Jameco carries the full line of Mean Well Power products. For additional products visit www.Jameco.com/meanwellproducts

AC-to-DC Regulated Switching Table-Top Power Supplies (Continued)

We are happy to change the power plug on any listed table-top power supply to a connector of your choice (see pg 130) for just \$2.50 each. A 100 pc. minimum order applies.

See page 134 for International Power Cords



Part No.	Manufacturer	Manufacturer Part No.	Output Volts (VDC)/ Current (A)	Output Connector ID x OD mm Female/Male; Polarity ◆	Input VAC@Hz	Output Power (W)	LED Ind.	Size (L" x W" x H")	Cords* (DC/AC)	Wt. (lbs.)	Agency Approvals	Pricing			
												1	10	50	100
3-Wire AC Input – Regulated Switching Table-Top – Single Output (Continued)												* Web Code: DDZ			
2100216	BESTEC	BPA-501-12	+12/4.2	2.5mm x 5.5mm F 2	100-240@50-60	50	No	6.5 x 2.8 x 1.8	5'1/2	0.7	UL/CSA/TUV	\$34.95	\$31.49	\$27.95	\$24.95
1586314	Phihong	PSC60M-120-R	+12/5.0	2.1mm x 5.5mm F 2	100-240@50-60	60	No	5.1 x 2.4 x 1.3	4'6'	0.7	UL/CUL/TUV/CE	44.95	40.95	36.95	32.95
1952370	Mean Well	GS60A12-P1J	+12/5.0	2.1mm x 5.5mm F 2	90-264@47-63	60	Yes	4.9 x 1.9 x 1.2	4'1/2	0.7	UL/CUL/TUV/CEC	28.95	26.95	24.95	22.95
155231	Mean Well	SPU50-3U	+12/5.0	2.1mm x 5.5mm F 2	100-240@47-63	60	Yes	5.7 x 3.0 x 1.7	6'6'	1.3	UL/CSA/TUV	49.95	44.95	39.95	35.95
2099420	Sparkle Power	FSP060-DBAB1	+12/5.0	2.5mm x 5.5mm F 2	100-240@50-60	60	Yes	4.3 x 2.4 x 1.2	5'1/2	0.5	UL/CUL/TUV/CEC	32.95	29.95	26.95	23.95
2078291	Mean Well	GS90A12-P1M	+12/6.67	2.5mm x 5.5mm F 2	100-240@50-60	80	Yes	5.7 x 2.3 x 1.3	4'1/2	0.9	UL/CUL/TUV/CEC	44.49	41.49	38.95	36.49
221249	Mean Well	U6S5105-P2JU	+12/6.7	2.1mm x 5.5mm F 2	100-240@50-60	80	Yes	6.6 x 3.1 x 1.8	6'6'	2.0	UL/CUL/TUV/CE	64.95	59.95	54.95	49.95
1940846	Mean Well	AS-120P-12	+12/8.4	4-pin DIN M	100-240@50-60	100	No	6.6 x 2.6 x 1.4	4'1/2	1.2	UL/CUL/TUV/CE	58.95	54.95	51.95	48.95
2099294	Mean Well	GS220A12-R7B	+12/15	4-pin DIN M	90-264/127-370@47-63	180	Yes	8.3 x 3.4 x 1.8	3.3'1/2	2.4	UL/CUL/TUV/CE/PCF	129.95	116.95	104.95	94.95
1954261	Mean Well	GS15A-4P1J	+15/1.0	2.1mm x 5.5mm F 2	100-240@50-60	15	No	3.1 x 2.3 x 1.3	6'1/2	0.5	UL/CUL/TUV/CEC	18.49	16.49	14.49	12.95
1940432	Mean Well	GS18A15-P1JU	+15/1.2	2.1mm x 5.5mm F 2	100-240@50-60	18	Yes	3.7 x 2.1 x 1.4	6'6'	0.5	UL/CUL/TUV/CEC	18.49	16.49	14.49	12.95
1940619	Mean Well	GS25A15-P1J	+15/1.66	2.1mm x 5.5mm F 2	100-240@50-60	25	No	3.7 x 2.1 x 1.4	6'1/2	0.5	UL/CUL/TUV/CEC	16.49	14.95	13.49	12.49
243012	Mean Well	P30A-41P2JU	+15/1.8	2.1mm x 5.5mm F 2	100-240@50-60	27	Yes	4.2 x 2.6 x 1.4	6'6'	0.8	UL/CUL/TUV/CE	24.95	22.49	19.95	18.49
221577	Mean Well	GS40A15-P1J	+15/2.67	2.1mm x 5.5mm F 2	90-264@50-60	40	Yes	4.9 x 2.0 x 1.3	6'1/2	0.8	UL/CUL/TUV/CE/CEC	25.95	24.49	22.95	21.49
1954295	Mean Well	GS60A15-P1J	+15/4.0	2.1mm x 5.5mm F 2	90-264@47-63	60	Yes	4.9 x 2.0 x 1.2	4'1/2	0.7	UL/CUL/TUV/CE	28.95	26.95	24.95	22.95
2078320	Mean Well	GS90A15-P1M	+15/6.0	2.5mm x 5.5mm F 2	100-240@50-60	90	Yes	5.7 x 2.3 x 1.3	3.9'1/2	0.8	UL/CUL/TUV/CEC	44.49	41.49	38.95	36.49
1940854	Mean Well	AS-120P-15	+15/6.7	4-pin DIN M	100-240@50-60	100	No	6.6 x 2.6 x 1.4	4'1/2	1.2	UL/CUL/TUV/CE	58.95	54.95	51.95	48.95
243046	Mean Well	P66A-5P2JU	+18/3.66	2.1mm x 5.5mm F 2	100-240@50-60	66	Yes	5.8 x 3.0 x 1.7	6'6'	1.2	UL/CUL/TUV/CE	44.95	40.95	36.95	32.95
148267	AcBell	AP13AD02	+19/3.42	2.5mm x 5.5mm F 2†	100-240@50-60	65	No	4.2 x 1.8 x 1.1	6'6'	0.8	UL/CUL/TUV/CE	36.95	32.95	29.95	26.95
2099411	Sparkle Power	FSP090-DMCBI	+19/4.74	7ea. R/A plugs F 2††	100-240@50-60	90	No	5.3 x 2.3 x 1.3	6'5'	0.7	UL/CUL/TUV/CEC	59.95	53.95	47.95	42.95
2099761	Hi-Capacity	AC-C10K	+19/8.0	2.5mm x 5.5mm F 2	100-240@50-60	120	Yes	6.6 x 2.4 x 1.5	4'6'	1.0	UL/CUL/TUV/CE	49.95	44.95	39.95	35.95
1954279	Mean Well	GS15A-6P1J	+24/0.62	2.1mm x 5.5mm F 2	90-264@47-63	12	No	3.9 x 2.3 x 1.3	6'1/2	0.4	UL/CUL/TUV/CEC	18.49	16.49	14.49	12.95
1940459	Mean Well	GS18A24-P1J	+24/0.75	2.1mm x 5.5mm F 2	100-240@50-60	18	Yes	3.7 x 2.1 x 1.4	6'1/2	0.5	UL/CUL/TUV/CEC	15.95	14.49	13.49	12.49
1940635	Mean Well	GS25A24-P1JU	+24/1.04	2.1mm x 5.5mm F 2	100-240@50-60	25	No	3.7 x 2.1 x 1.4	6'6'	0.5	UL/CUL/TUV/CEC	18.95	16.95	14.95	13.49
380577	Mean Well	ES25A24-P1MU	+24/1.04	2.5mm x 5.5mm F 2	100-240@50-60	25	Yes	3.7 x 2.1 x 1.4	6'6'	0.6	UL/CSA/TUV/CE	19.95	17.95	15.95	13.95
229026	Phihong	PSC30U-240-R	+24/1.25	2.1mm x 5.5mm F 2	100-240@50-60	30	No	4.5 x 2.4 x 1.4	6'1/2	0.5	UL/CUL/TUV/CE	26.95	24.95	22.95	21.49
1952353	Mean Well	GS40A24-P1J	+24/1.67	2.1mm x 5.5mm F 2	90-264@47-63	40	Yes	4.9 x 2.0 x 1.2	6'1/2	0.7	UL/CUL/TUV/CEC	24.95	22.49	19.95	17.95
1940281	EDAC, Inc.	EA1050D	+24/2.08	2.1mm x 5.5mm F 2	100-240@50-60	50	Yes	4.7 x 2.4 x 1.4	4'1/2	0.6	UL/CUL/TUV/CEC	24.95	22.49	19.95	17.95
1942788	EDAC, Inc.	EA1050B240	+24/2.5	2.1mm x 5.5mm F 2	100-240@50-60	60	Yes	4.8 x 2.4 x 1.4	6'1/2	1.8	UL/CUL/TUV/CE/CEC	24.95	22.49	19.95	17.95
1952214	Mean Well	GS60A24-P1J	+24/2.5	2.1mm x 5.5mm F 2	90-264@47-63	60	Yes	4.9 x 2.0 x 1.3	6'1/2	0.7	UL/CUL/TUV/CEC	28.95	26.95	24.95	22.95
161606	Mean Well	SPU50-6U-R	+24/2.5	2.1mm x 5.5mm F 2	100-240@47-63	60	Yes	5.6 x 2.9 x 1.6	6'6'	1.3	UL/CSA/TUV	49.95	44.95	39.95	35.95
1950913	EDAC, Inc.	EA1050B-240-1	+24/2.5	2.5mm x 5.5mm F 2	100-240@50-60	60	Yes	4.8 x 2.4 x 1.4	6'1/2	1.8	UL/CUL/TUV/CE	29.95	26.95	24.95	22.95
355056	RelliaPro	JR-TT-66-24	+24/2.75	2.1mm x 5.5mm F 2	100-240@50-60	66	Yes	5.8 x 3.0 x 1.7	6'1/2	1.2	UL/CUL/TUV/CE	44.95	40.95	36.95	32.95
2078338	Mean Well	GS90A24-P1M	+24/3.75	2.5mm x 5.5mm F 2	100-240@50-60	90	No	5.9 x 2.3 x 1.2	4'1/2	0.9	UL/CUL/TUV/CEC	44.49	41.49	38.95	36.49
1940871	Mean Well	AS-120P-24	+24/5.0	2.5mm x 5.5mm F 2	100-240@50-60	120	No	6.6 x 2.6 x 1.4	4'1/2	1.2	UL/CUL/TUV/CE	58.95	54.95	51.95	48.95
2099286	Mean Well	GS220A24-R7B	+24/9.2	4-pin DIN M	90-264/127-370@47-63	220	Yes	8.3 x 3.4 x 1.8	3.3'1/2	2.4	UL/CUL/TUV/CE/PCF	129.95	116.95	104.95	94.95
1707083	Mean Well	ES18A28-P1J	+28/0.64	2.1mm x 5.5mm F 2	100-264@47-63	18	Yes	3.7 x 2.1 x 1.4	6'1/2	0.5	UL/CUL/TUV/CE/CEC	12.95	10.95	9.49	8.49
1940643	Mean Well	GS25A28-P1JU	+28/0.89	2.1mm x 5.5mm F 2	100-240@50-60	25	No	3.7 x 2.1 x 1.4	6'6'	0.7	UL/CUL/TUV/CEC	18.95	16.95	14.95	13.49
1940475	Mean Well	GS18A48-P1JU	+48/0.37	2.1mm x 5.5mm F 2	100-240@50-60	18	No	3.6 x 2.1 x 1.4	6'6'	0.5	UL/CUL/TUV/CEC	18.49	16.49	14.49	12.95
1940651	Mean Well	GS25A48-P1J	+48/0.52	2.1mm x 5.5mm F 2	100-240@50-60	25	No	3.7 x 2.1 x 1.4	6'1/2	0.5	UL/CUL/TUV/CEC	16.49	14.95	13.49	12.49
229032	Phihong	PSA31U-480	+48/0.63	2.1mm x 5.5mm F 2	90-264@47-63	30	No	4.5 x 2.4 x 1.6	6'1/2	0.5	UL/CUL/TUV/CE	24.95	22.49	19.95	18.95
221584	Mean Well	P40A-8P2JU	+48/0.8	2.1mm x 5.5mm F 2	100-240@50-60	40	Yes	4.3 x 2.6 x 1.4	6'6'	0.8	UL/CUL/TUV/CE	25.95	23.95	21.95	19.95
221585	Mean Well	GS40A48-P1J	+48/0.84	2.1mm x 5.5mm F 2	100-240@50-60	40	Yes	4.9 x 2.0 x 1.3	6'6'	0.8	UL/CUL/TUV/CE	27.95	25.95	23.95	21.95
172065	Mean Well	SPU50-9U	+48/1.25	2.1mm x 5.5mm F 2	100-240@50-60	60	Yes	5.6 x 2.9 x 1.7	6'6'	1.3	UL/CSA/TUV	44.95	39.95	36.95	33.95
1952396	Mean Well	GS60A48-P1JU	+48/1.25	2.1mm x 5.5mm F 2	90-264@47-63	60	Yes	4.9 x 2.0 x 1.2	6'6'	0.7	UL/CUL/TUV/CE/CEC	28.95	26.95	24.95	22.95
376615	Mean Well	P66A-8P2JU	+48/1.37	2.1mm x 5.5mm F 2	100-240@50-60	66	Yes	5.8 x 3.0 x 1.7	6'6'	1.2	UL/CSA/TUV/CE	39.95	36.95	33.95	31.49
379681	Mean Well	P66A-8P2MU	+48/1.37	2.5mm x 5.5mm F 2	90-264@47-63	66	Yes	5.8 x 3.0 x 1.7	6'6'	1.2	UL/CSA/TUV/CE	44.95	41.95	38.95	35.95
3-Wire AC Input – Regulated Switching Table-Top – Double & Triple Output												* Web Code: TDO			
196270	Horizon	PSU25A13	+5/2.5, +12/1.0	4-pin mini DIN M	100-240@47-63	25	No	4.2 x 2.6 x 1.4	6'4'	1.2	UL/CUL/TUV/CE	\$32.95	\$29.95	\$26.95	\$23.95
221720	Mean Well	P25A14E-R1BU	+5/2.5, +15/0.3, -15/0.3	5-pin DIN M	100-240@50-60	25	Yes	4.3 x 2.6 x 1.4	6'1/2	0.8	UL/CUL/TUV/CE	34.95	31.49	28.95	25.95

* See accessory table-top power cord chart on page 129 when AC cord needed; refer to 1, 2 or 3 in "Cord (DC/AC)" column above for correct power cord † Right Angle

†† Includes 7ea. DC right angle plugs (1.7 x 4.75, 1.7 x 5.5, 2.1 x 5.5, 2.5 x 5.5, 3.0 x 6.3, 4.3 x 6.5, 5.8mm x 6.5mm) for various notebook compatibility

✓ CEC Equivalent available. Add a "C" before part number for CEC version. 🌿 CEC

3-Wire Regulated Table-Top Power Supplies continued on next page

🌿 RoHS compliant product + This product is available in both RoHS and non-RoHS versions. Add an "R" before part number for RoHS version. Details on page 197.