

Distributed by:

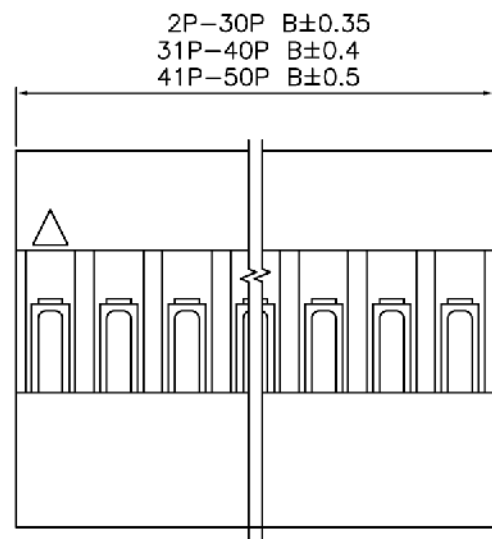
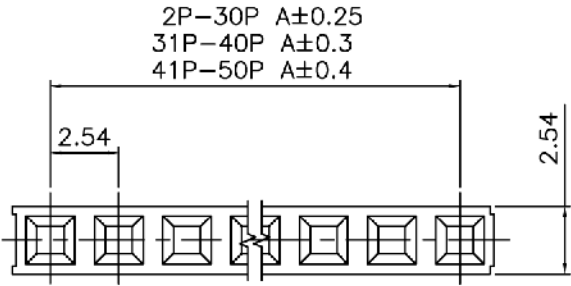
**JAMECO**<sup>®</sup>  
ELECTRONICS

**www.Jameco.com ♦ 1-800-831-4242**

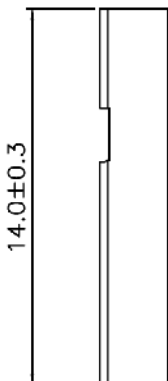
The content and copyrights of the attached  
material are the property of its owner.

Jameco Part Number 100812

Date	Rev.	Description



Poles	Part No.	Dimensions(mm)		Poles	Part No.	Dimensions(mm)	
		A	B			A	B
2	JS-1108-02	2.54	5.28	22	JS-1108-22	53.34	56.08
3	JS-1108-03	5.08	7.82	23	JS-1108-23	55.88	58.62
4	JS-1108-04	7.62	10.36	24	JS-1108-24	58.42	61.16
5	JS-1108-05	10.16	12.90	25	JS-1108-25	60.96	63.70
6	JS-1108-06	12.70	15.44	26	JS-1108-26	63.50	66.24
7	JS-1108-07	15.24	17.98	27	JS-1108-27	66.04	68.78
8	JS-1108-08	17.78	20.52	28	JS-1108-28	68.58	71.32
9	JS-1108-09	20.32	23.06	29	JS-1108-29	71.12	73.86
10	JS-1108-10	22.86	25.60	30	JS-1108-30	73.66	76.40
11	JS-1108-11	25.40	28.14	31	JS-1108-31	76.20	78.94
12	JS-1108-12	27.94	30.68	32	JS-1108-32	78.74	81.48
13	JS-1108-13	30.48	33.22	33	JS-1108-33	81.28	84.02
14	JS-1108-14	33.02	35.76	34	JS-1108-34	83.82	86.56
15	JS-1108-15	35.56	38.30	35	JS-1108-35	86.36	89.10
16	JS-1108-16	38.10	40.84	36	JS-1108-36	88.90	91.64
17	JS-1108-17	40.64	43.38	37	JS-1108-37	91.44	94.18
18	JS-1108-18	43.18	45.92	38	JS-1108-38	93.98	96.72
19	JS-1108-19	45.72	48.46	39	JS-1108-39	96.52	99.26
20	JS-1108-20	48.26	51.00	40	JS-1108-40	99.06	101.80
21	JS-1108-21	50.80	53.54				



- **SPECIFICATIONS**
- Voltage Rating : 250 V AC/DC
  - Current Rating : 3A AC/DC
  - Withstanding Voltage : 1000V AC/minute
  - Insulation Resistance : 1000MΩ min
  - Temperature Range : - 20℃ to + 85℃
  - Contact Resistance : 20mΩ max

- **HOUSING**
- Part No. : JS-1108 -XX
  - JS-1108-XX : GP Produces
  - Poles : 1-40 (Single Row)
  - Material : PBT UL94V-0
  - Q' ty : 1000 pcs./Bag

DCC. NO.  
A4 DRAWING NO.

MATERIAL		<b>GOLDSUN ELECTRONICS CO., LTD.</b>	
JAMECO NO.	<b>157383</b>	GOLDSUN NO.	JS-1108-3-R
DRWN: Kiki Chen	Description		Rev. 1
VERIFY PEOPLE: Ada Zheng , Ivy Lan	CONNECTOR		
UNIT: mm	SCALE:	SHEET 1 OF 1	CAS No: ERN No: