

Distributed by:

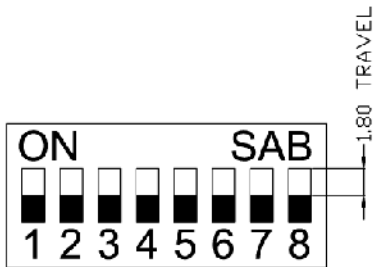
JAMECO[®]
ELECTRONICS

www.Jameco.com ♦ 1-800-831-4242

The content and copyrights of the attached
material are the property of its owner.

Jameco Part Number 109059

Date	Rev.	Description



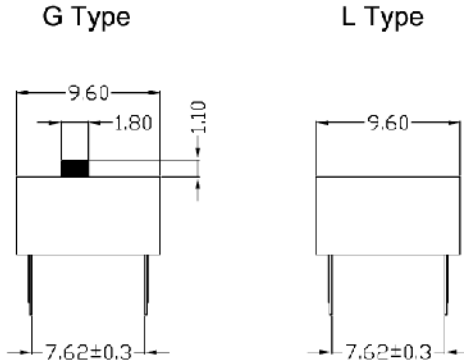
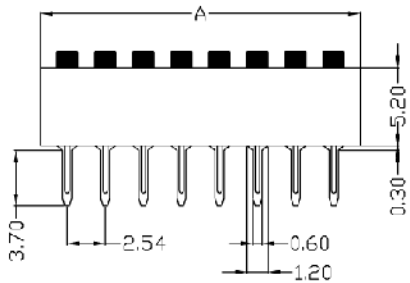
RoHS Compliant

DIMENSIONS:

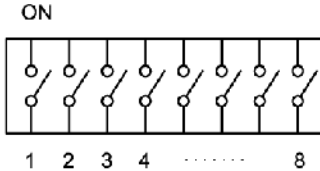
POLE	1	2	3	4	5	6	7	8	9	10	12
A±0.2	3.54	6.08	8.62	11.16	13.70	16.24	18.78	21.32	23.86	26.40	31.48

MATERIALS:

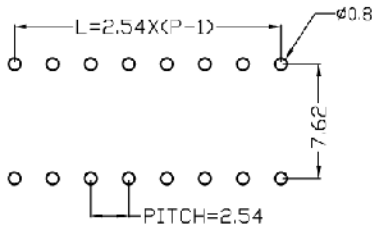
PART	MATERIAL	FINISH
COVER	PBT UL 94V-0	Blue \ Red
BASE	PA66 UL 94V-0	Black
ACTUATOR	PA66 UL 94V-0	White
STATION CONTACT	Brass	Gold Plated
MOVABLE CONTACT	Brass	Gold Plated
TERMINAL	Brass	Tin Plated



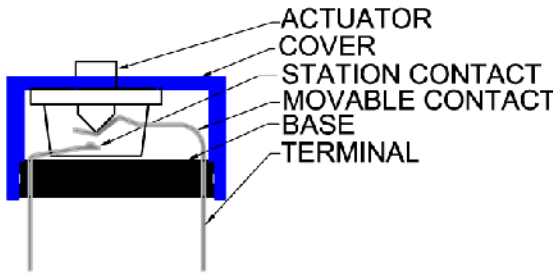
WIRING DIAGRAM



DRILLING PLAN



STRUCTURE:



TOLERANCE	0.1~1.0 ±0.05	5.0~10.0 ±0.2
	1.0~5.0 ±0.1	10.0~20.0 ±0.3

DCC. NO.
A4 DRAWING NO.

MATERIAL		GOLDSUN ELECTRONICS CO., LTD.	
JAMECO NO. 109059		GOLDSUN NO. BS 060704	
DRAWN: Kiki Chen		Description SWITCH DIP SPST	
VERIFY PEOPLE: Ada Zheng , Ivy Lan		Rev. 1	
UNIT: mm	SCALE:	SHEET 1 OF 1	CAS No: ERN No: