

Distributed by:

JAMECO[®]
ELECTRONICS

www.Jameco.com ♦ 1-800-831-4242

The content and copyrights of the attached
material are the property of its owner.

Jameco Part Number 112336

SPECIFICATION

CUSTOMER: JAMES

DATE: '05.06.12

MODEL NO: ADU090150

DESIGNED NO: A2231

1. APPLICABLE SAFETY STANDARD :

T-MARK PSE UL 1310 UL 1950 C-CUL GS CE 商檢
 SEMKO、DEMKO、FIMKO、NEMKO OTHER : _____

2. GENERAL APPEARANCE :

- 2.1 THE GENERAL APPEARANCE OF THE AC/DC ADAPTOR SHALL BE WITHOUT DEFORMATION, CRACKS OR CORROSION.
2.2 THE SHAPE, DIMENSIONS AND MARKINGS OF THE AC/DC ADAPTOR SHALL BE AS SPECIFIED IN THE CONSTRUCTION DRAWING AND NAME PLATE.

3. CHARACTERISTICS :

- 3.1 PRIMARY RATED VOLTAGE & LINE FREQUENCY : 120 VAC 60 Hz
3.2 PRIMARY EXCITING CURRENT (Io) 70 mA MAX. AT INPUT 120 VAC 60 Hz.
LOADING CURRENT (Ip) X mA MAX. AT INPUT X AC X Hz, LOAD X A.
3.3 NO - LOAD LOSS : X W MAX. AT INPUT X VAC X Hz.
3.4 SECONDARY RATED VOLTAGE AND CURRENT :

PRIMARY VOLTAGE	RATE VOLTAGE	TOLERANCE	RATED CURRENT	NO-LOAD VOLTAGE	REGULATION
120VAC 60Hz	9VAC	±5%	1500mA-AC		

- 3.5 RIPPLE VOLTAGE : X mV(PK-PK) MAX. AT INPUT X VAC X Hz, LOAD X A.
3.6 DC RESISTANCE : PRIMARY: X Ω ± X % MEASURED AT 25 °C .
3.7 HI-POT TEST : AC 1240 V 50/60Hz FOR 1 MINUTES BETWEEN INPUT TO OUTPUT PLUG AND CASE NEED NORMAL PERFORMANCE , LEAKAGE CURRENT 1 mA.
3.8 INSULATION RESISTANCE : 500 VDC 100 MΩ MIN. BETWEEN INPUT TO OUTPUT PLUG AND CASE.
3.9 TEMPERATURE RISE : INPUT 120 VAC 60 Hz, OUTPUT LOAD 1.5 A FOR INPUT COIL 75 °C MAX (BY USE RESISTANCE METHOD) ON CASE SURFACE X °C MAX (BY USE THERMOMETER METHOD) AT 25°C AMBIENT.
3.10 HUMIDITY TEST : TEMP. 40± 2 °C , 90-95 % R.H FOR 4 HOURS , AFTER AT MINUTES TAKEN OUT FROM OVEN . AND WIPED DRY. TEST 3.4、3.7 AND INSULATION TEST 10 MΩ MIN.

4. MECHANICAL PERFORMANCE :

- 4.1 STRAIN-RELIEF TEST : 10 LB FOR 60 SEC. IN ANY DIRECTION .
4.2 DROP TEST : UNIT IS TO BE DROPPED FROM 3 FEET HIGH ONTO A CONCRETE FLOOR COVERED WITH 1/8 INCH VINYL TILE 3 TIMES, THE UNIT SHOULD MEET THE ITEM 3.7、3.8.
4.3 BENDING RELIEF TEST : THE CORD AND S/R SHALL WITHSTAND WEIGHT OFF 200 g, IT SWINGS FROM LEFT TO RIGHT AT AN ANGLE OF 120 deg , 300 CYCLE TIMES NIN.
4.4 VIBRATION RESISTANCE : PRODUCT PACKAGED IN A INTENDED MANNER SHALL DEVELOP NO MECHANICAL OR ELECTRICAL FAILURE WHEN SUBJECTED TO A 1.5 mm PEAK TO PEAK AMPLITUDE , 10-50-10 Hz , VIBRATION IN EACH OF X , Y AND Z DIRECTIONS FOR 30 MINUTES .

5. TEMPERATURE RANGE:

- 5.1 USE TEMPERATURE EXTENT : 0 °C ~ +40 °C
5.2 STORAGE TEMPERATURE EXTENT : -25 °C ~ +55 °C

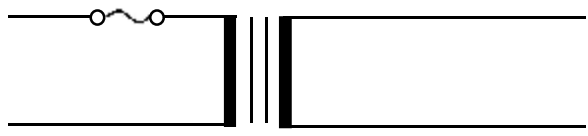
APPROVED BY _____ CHECKED BY _____ TESTED BY 李淑華

ELECTRICAL DATA

CUSTOMER: JAMES
 MODEL NO: ADU090150

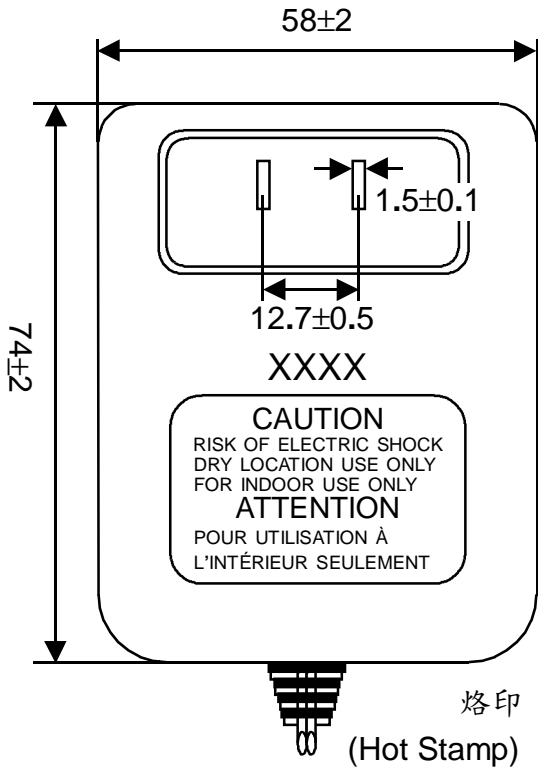
DATE: '05.06.12
 DESIGNED NO: A2231

ITEM	SPEC.	SAMPLE									
		1	2	3	4	5	6	7	8	9	10
PRIMARY EXCITING CURRENT INPUT 120 V-AC 60 Hz	70mA MAX.	30									
PRIMARY LOAD CURRENT INPUT 120 V-AC 60 Hz	mA	148									
SECONDARY #1 NO LOAD AC VOLTAGE		10.51									
SECONDARY #1 AC VOLTAGE LOAD 1500mA-AC	9V±5%	8.92									
TEMP RISE AFTER 4 HRS WARM UP IN 25 °C AMBIENT	75 °C MAX.	OK									
HI-POT TEST	PRI. TO SEC. & CORE AC 1240 V	OK									



APPROVED BY _____ CHECKED BY _____ TESTED BY 李淑華

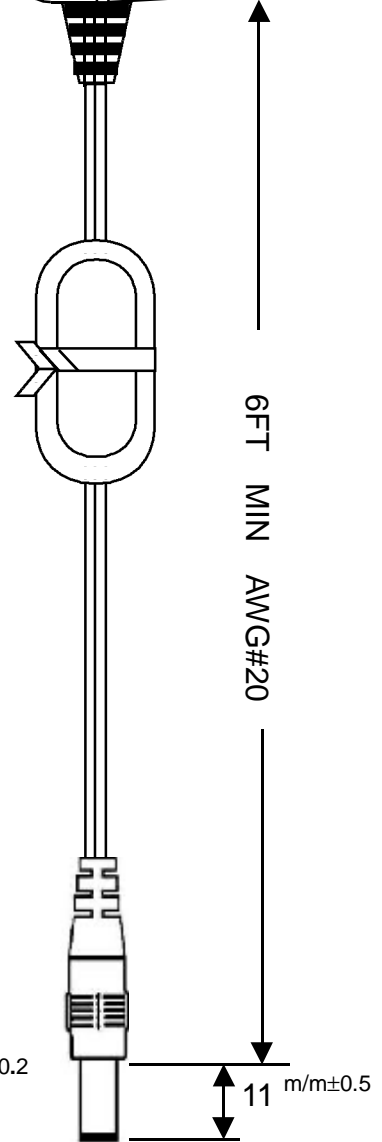
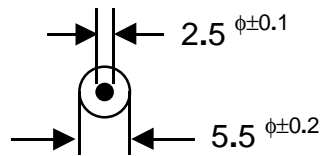
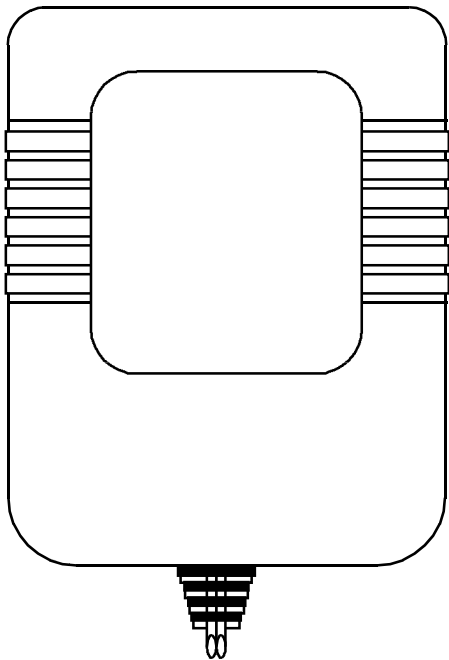
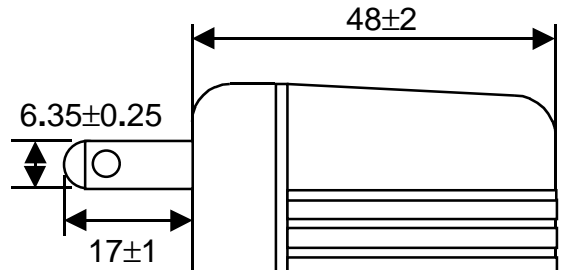
聯輝電機股份有限公司



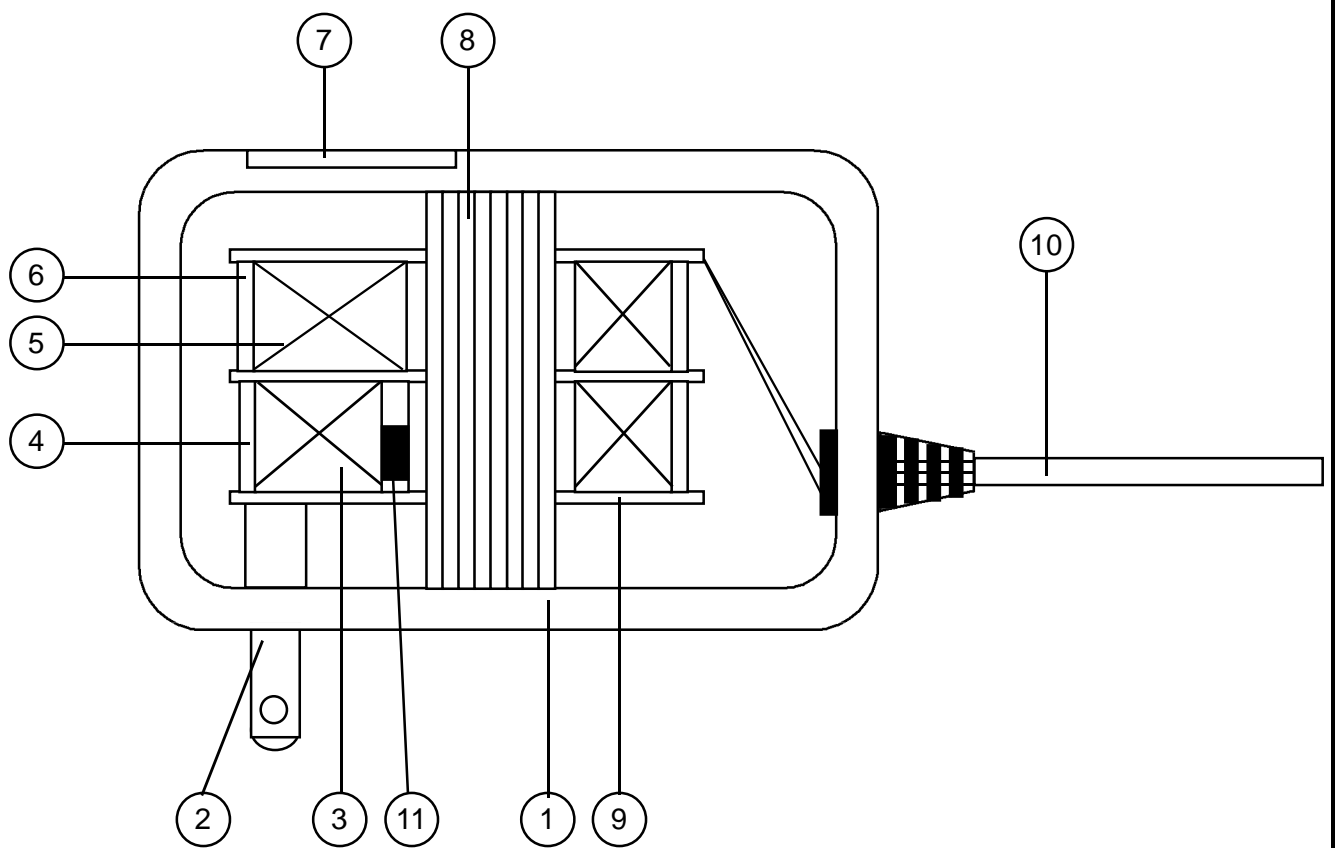
烙印 XXXX
(Hot Stamp)

→ 月份
(Month)

→ 年份
(Year)



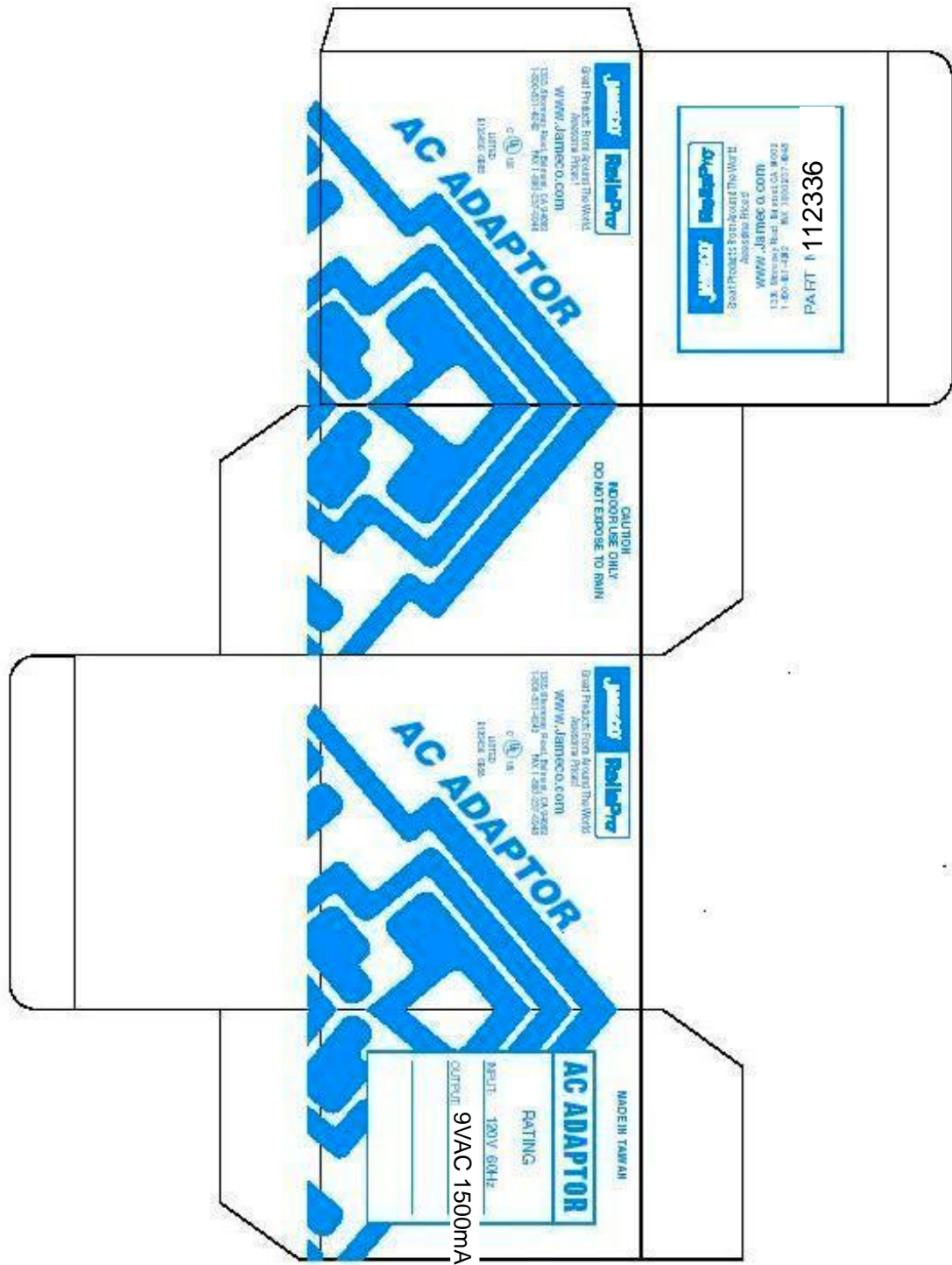
聯輝電機股份有限公司



聯輝電機股份有限公司

No	DESCRIPTION	MATERIAL	SPEC. & Q'TY	MANUFACTURE
1	Enclosure	Noryl SE 100		GE Plastics Japan Ltd. (E45587(B))
2	Primary Blades	Nickel Plating		Spread Profit Co., Ltd. or Equivalent.
3	Primary Winding	Polyurethane Enameled Copper Wire		Tai-I Electric Wire & Cable Co., Ltd. (E85640(S))or Equivalent.
4	Primary Outerwrap	Polyester Film Tape	0.05mm (4T)	Chyun Yih Tape Co., Ltd. (E81174) or Equivalent.
5	Secondary Winding	Polyurethane Enameled Copper Wire		Tai-I Electric Wire & Cable Co., Ltd. (E85640(S))or Equivalent.
6	Secondary Outerwrap	Polyester Film Tape	0.025mm (2T)	Chyun Yih Tape Co., Ltd. (E81174) or Equivalent.
7	Nameplate	P.V.C	0.35mm	I Houng Name Plate Co., Ltd. or Equivalent.
8	Core	Silicon Steel	0.5mm	Top Silicon Steel Corp. or Equivalent. or Equivalent.
9	Bobbin	Zytel 101 NY66		E.I Dupont De Nemoure & Company (E41938(M))or Equivalent.
10	Output Cord	Flexible Cord	AWG#20 UL2468	Lu Her Wire & Cable Co., Ltd. or Equivalent.
11	Thermal Cutoff	M20 or UMI 322 or A2	115°C	Joint Force Metal Research (E142267N) or Equivalent.

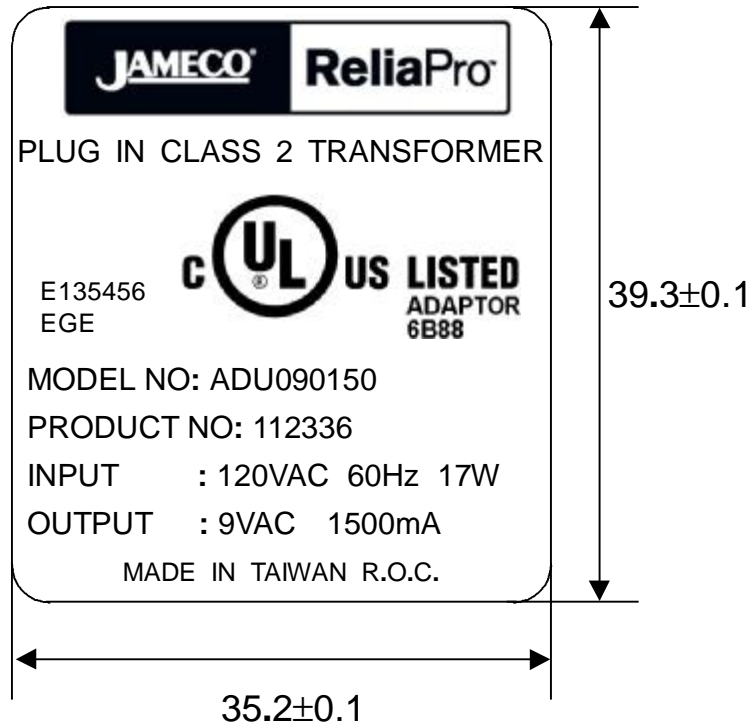
聯輝電機股份有限公司



- 1.尺寸:100x60x74m/m NO.11
- 2.磅數: 450 磅
- 3.印刷:白底藍色字体及圖案 色號: PMS 300

出圖章	名稱	小紙盒	5					
	料號		4					
	發行日		3					
	核准	品保審核	製圖	2				
			李淑華	1	符號	日期	變更事項	修訂者
				單位:m/m	版次	圖號		

聯輝電機股份有限公司



- 1.材質:PVC
- 2.厚度:0.35 ^{+0.2} _{-0.1}
- 3.印刷:銀底黑字

出圖章	名稱	銘牌	5				
	料號		4				
	發行日		3				
	核准	品保審核	製圖	2			
			李淑華	1			
			符號	日期	變更事項		修訂者
			單位:m/m	版次	1-0	圖號	審核者