

Distributed by:

JAMECO[®]
ELECTRONICS

www.Jameco.com ♦ 1-800-831-4242

The content and copyrights of the attached
material are the property of its owner.

Jameco Part Number 1299366

FEATURES AND SPECIFICATIONS

Features and Benefits

- Low profile design to accommodate height constraints
- Fully isolated terminals to protect contacts from damage
- Uses standard Mini-Fit series terminals

Reference Information

Product Specification: PS-5556-0001

Packaging: Tray or bag

UL File No.: E29179

CSA File No.: LR19980

TUV License No.: R75142

Mates With: [5559](#), [5566](#) and [5569](#) single row connectors and [71233](#) right angle headers

Use With: [5556](#) or 44476 terminals

Designed In: Millimeters

Mechanical

Contact Insertion Force: 1.5kg max.

Contact Retention to Housing: 3.0kg min.

Wire Pull-Out Force: 9.0kg min.

Insertion Force to PCB: 5.0kg max.

Mating Force: 0.7kg (1.54 lb) max.

Unmating Force: 0.05kg (0.11 lb) min.

Normal Force: 200g min.

Durability: 30 cycles

Physical

Housing: 6/6 nylon, UL 94V-2 or 94V-0

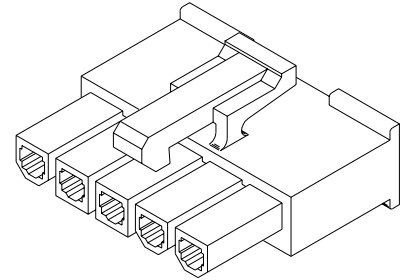
Contact: Brass or Phosphor Bronze

Plating: Tin, select Gold or overall Gold

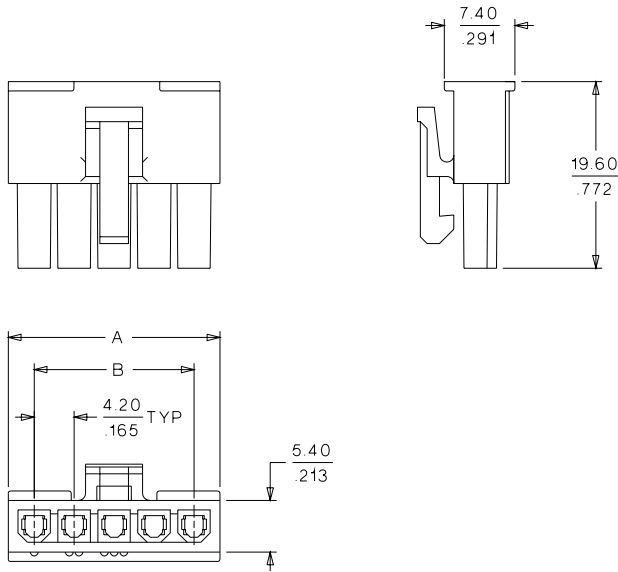
Operating Temperature: -40 to +105°C

molex® 4.20mm (.165") Pitch Mini-Fit, Jr.™ Receptacle

5557 Single Row



CATALOG DRAWING (FOR REFERENCE ONLY)



	Order No.
Polarizing Key	15-04-0211

ORDERING INFORMATION AND DIMENSIONS

Circuits	Order No.		Dimension	
	94V-2	94V-0	A	B
3*	39-01-4030	39-01-4031	13.80 (.543)	8.40 (.331)
4	39-01-4040	39-01-4041	18.00 (.709)	12.60 (.496)
5	39-01-4050	39-01-4051	22.20 (.874)	16.80 (.661)

• US Standard Product, available through Molex franchised distributors

* 3-circuit receptacle designed for first-mate/last-break applications



PRODUCT SPECIFICATION

1.0 SCOPE:

This specification covers the following MINI-FIT, JR. product line assemblies.

- 1. 5557 series receptacle mated with 5559 series plug.
- 2. 5557 series receptacle mated with 5566 series vertical header.
- 3. 5557 series receptacle mated with 5569 series right angle header.

2.0 Applicable Wire Gages:

Max. Insulation Diameter And Applicable wire gages.	16 AWG: .122/(3.10) Max.
	18-24 AWG: .122/(3.10) Max.
	22-28 AWG: .071/(1.80) Max.

3.0 Ratings:

Rated Voltage (Max.)	600 Volts [AC (rms) / DC]
----------------------	---------------------------

	Brass					Phos. Bronze				
	CKT. SIZE:	2&3	4-6	7-10	12-24	CKT. SIZE:	2&3	4-6	7-10	12-24
Maximum Rated Current	AWG#16	9A	8A	7A	6A	AWG#16	8A	7A	6A	5A
	AWG#18	9A	8A	7A	6A	AWG#18	8A	7A	6A	5A
	AWG#20	7A	6A	5A	5A	AWG#20	6A	5A	4A	4A
	AWG#22	5A	4A	4A	4A	AWG#22	4A	3A	3A	3A
	AWG#24	4A	3A	3A	3A	AWG#24	3A	2A	2A	2A
	AWG#26	3A	2A	2A	2A	AWG#26	2A	1A	1A	1A
	AWG#28	2A	1A	1A	1A	AWG#28	1A	1A	1A	1A

Ambient Temperature Range (Including terminal temperature rise.)	-40°C - +105°C
---	----------------

DRAWG. NO. PSX-5556-0001

DRAWG. NO. PSX-5556-0001

REV.	3	1	3	1	1	3	3	3	3
SHT.	1	2	3	4	5	6	7	8	9

FILE NAME P5556X11	▽ = 0	▼ = 0	REVISE ONLY ON CAD SYSTEM	REV.	3
THIS DRAWING CONTAINS INFORMATION THAT IS PROPRIETARY TO MOLEX INC. AND SHOULD NOT BE USED WITHOUT WRITTEN PERMISSION.				SHT.	1 OF 9



PRODUCT SPECIFICATION

4.0 Performance:

4-1 Electrical Performance:

Item	Test Condition	Requirement
4-1-1 Contact Resistance	Mate connectors, measure by dry circuit, 20mV max., 10mA. as shown. Wire resistance shall be removed from the measured value.	10 mΩ Max.
4-1-2 Insulation Resistance	Mate connectors, apply 500V DC between adjacent terminal or ground.	1000 MΩ Min.
4-1-3 Dielectric Strength	Mate connectors, apply 1500V AC for 1 minute between adjacent terminal or ground.	No Breakdown
4-1-4 Contact Resistance On Crimped Portion	Crimp the wire to the terminal, measure by dry circuit, 20mV Max., 10mA.	5mΩ Max.

4-2 Mechanical Performance:

Item	Test Condition	Requirement
4-2-1 Insertion and Withdrawal Force	Insert and withdraw connectors at the speed rate of 25± 3mm/minute.	See Section 6.0.
4-2-2 Crimping Pull Out Force	Mount the crimped terminal, apply axial pull out force on the wire at the speed rate of 25±3mm/minute.	AWG#16 9.0 Kgf Min.
		AWG#18 9.0 Kgf Min.
		AWG#20 6.0 Kgf Min.
		AWG#22 4.0 Kgf Min.
		AWG#24 3.0 Kgf Min.
		AWG#26 2.0 Kgf Min.
		AWG#28 1.0 Kgf Min.

REV.

SHT.

FILE NAME
P5556X21

▽ = 0

▼ = 0

REVISE ONLY ON CAD SYSTEM

REV. 1

THIS DRAWING CONTAINS INFORMATION THAT IS PROPRIETARY TO MOLEX INC. AND SHOULD NOT BE USED WITHOUT WRITTEN PERMISSION.



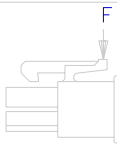
SHT. 2

DRAWG. NO. PSX-5556-0001

DRAWG. NO. PSX-5556-0001



PRODUCT SPECIFICATION

Item	Test Condition	Requirement	
4-2-3	Terminal Insertion Force	Insert the crimped terminal into the housing. 1.5 Kgf Max.	
4-2-4	Terminal/Housing Retention Force	Apply axial pull out force at the speed rate of 25±3mm/minute on the terminal assembled in the housing. 3.0 Kgf Min.	
4-2-5	Pin Retention Force	Apply axial push force at the speed rate of 25±3mm/minute. 1.0 Kgf Min.	
4-2-6	Header/P.C. Board Insertion Force	Apply force perpendicular to the housing at the speed rate of 25±3mm/minute as shown. 	5.0 Kgf Max.
4-2-7	Header/P.C. Board Retention Force	Apply force perpendicular to the housing at the speed rate of 25±3mm/minute. 	1.0 Kgf Min.
4-2-8	Thumb latch Operation Force	Depress latch at a speed rate of 25.4 mm/minute. 	1.7 Kgf Max.
4-2-9	Thumb latch Yield Strength	Mate loaded connectors fully. Pull apart via wires at a speed rate of 25.4 mm/minute. 7.0 Kgf Min.	
4-2-10	Normal Force	Insert split test fixture into female terminal. Apply force perpendicular to terminal sides at a speed rate of 2.54 mm/ minute. 375 gf Max.	

DRWG. NO. PSX-5556-0001

DRWG. NO. PSX-5556-0001

REV.
SHT.

FILE NAME
P5556X31

▽ = 0 ▼ = 0

REVISE ONLY ON CAD SYSTEM

REV. 3

THIS DRAWING CONTAINS INFORMATION THAT IS PROPRIETARY TO MOLEX INC. AND SHOULD NOT BE USED WITHOUT WRITTEN PERMISSION.

SHT. 3



PRODUCT SPECIFICATION

4-3 Environmental Performance and Others

Item		Test Condition	Requirement	
4-3-1	Repeated Insertion/Withdrawal	When mated up to 30 cycles repeatedly by the rate of 10 cycles per minute	Contact Resistance	20mΩ Max.
4-3-2	Temperature Rise	Carrying rated current load	30° C Rise Max.	
4-3-3	Vibration	Amplitude: 1.5mm P-P Sweep time: 10-55-10 Hz in 1 minute Duration: 2 hours in each X.Y.Z. axes	Appearance	No Damage
			Contact Resistance	20mΩ Max.
			Dis-continuity	1μsec. Max.
4-3-4	Shock	50G, 3 strokes in each X.Y.Z. axes	Appearance	No Damage
			Contact Resistance	20mΩ Max.
			Dis-continuity	1μsec. Max.
4-3-5	Heat Resistance	105±2°C, 96 hours	Appearance	No Damage
			Contact Resistance	20mΩ Max.
4-3-6	Cold Resistance	-40±3°C, 96 hours	Appearance	No Damage
			Contact Resistance	20mΩ Max.

DRAWG. NO. PSX-5556-0001

DRAWG. NO. PSX-5556-0001

REV.

SHT.

FILE NAME
P5556X41

▽ = 0

▼ = 0

REVISE ONLY ON CAD SYSTEM

REV.

1

THIS DRAWING CONTAINS INFORMATION THAT IS PROPRIETARY TO MOLEX INC. AND SHOULD NOT BE USED WITHOUT WRITTEN PERMISSION.

SHT.

4



PRODUCT SPECIFICATION

Item		Test Condition	Requirement	
4-3-7	Humidity	Temperature: 60±2°C Relative Humidity: 90-95% Duration: 96 Hours	Appearance	No Damage
			Contact Resistance	20mΩ Max.
			Dielectric Strength	Must meet 4-1-3
			Insulation Resistance	100MΩ Min.
4-3-8	Temperature Cycling	5 cycles: a) -55°C 30 minutes b) +105°C 30 minutes	Appearance	No Damage
			Contact Resistance	20mΩ Max.
4-3-9	Salt Spray	48±4 hours exposure to a salt spray from the 5±1% solution at 35±2° C	Appearance	No Damage
			Contact Resistance	20mΩ Max.
4-3-10	SO ₂ Gas	24 hours exposure to 50±5ppm, SO ₂ gas at 40±2° C	Appearance	No Damage
			Contact Resistance	20mΩ Max.
4-3-11	Solder-ability	Soldering time: 3±0.5 sec. Solder Temperature: 230±5° C	75% of immersed area must show no voids or pinholes.	
4-3-12	Resistance to Soldering Heat	Soldering time: 5±0.5 sec. Solder Temperature: 260±5° C	No Damage	

** The following test was performed ONLY on vertical and right angle header assemblies mated to a receptacle containing tin plated phos. bronze terminals.**

4-3-13	NH ₃ Gas	40 minute exposure to NH ₃ gas evaporating from 28% Ammonia solution	Appearance	No Damage
			Contact Resistance	20mΩ Max.

DRAWG. NO. PSX-5556-0001

DRAWG. NO. PSX-5556-0001

REV.

SHT.

FILE NAME
P5556X51

▽ = 0

▼ = 0

REVISE ONLY ON CAD SYSTEM

REV.

1

THIS DRAWING CONTAINS INFORMATION THAT IS PROPRIETARY TO MOLEX INC. AND SHOULD NOT BE USED WITHOUT WRITTEN PERMISSION.

SHT.

5



PRODUCT SPECIFICATION

5.0 PRODUCT SHAPE, DIMENSIONS, and MATERIALS

Refer to the attached drawing.

6.0 INSERTION/WITHDRAWAL FORCE

6-1-1 Plug And Receptacle / Receptacle And Vertical Header Assemblies With Tin Plated Brass Or Phos. Bronze Terminals.

CKT. SIZE	Insertion (kg. Max.)			Withdrawal (Kg. Min.)		
	Initial	6TH.	30TH.	Initial	6TH.	30TH.
2	1.40	1.30	1.30	0.10	0.08	0.08
3	2.10	1.95	1.95	0.15	0.12	0.12
4	2.80	2.60	2.60	0.20	0.16	0.16
5	3.50	3.25	3.25	0.25	0.20	0.20
6	4.20	3.90	3.90	0.30	0.24	0.24
7	4.90	4.55	4.55	0.35	0.28	0.28
8	5.60	5.20	5.20	0.40	0.32	0.32
9	6.30	5.85	5.85	0.45	0.36	0.36
10	7.00	6.50	6.50	0.50	0.40	0.40
11	7.70	7.15	7.15	0.55	0.44	0.44
12	8.40	7.80	7.80	0.60	0.48	0.48
14	9.80	9.10	9.10	0.70	0.56	0.56
16	11.20	10.40	10.40	0.80	0.64	0.64
18	12.60	11.70	11.70	0.90	0.72	0.72
20	14.00	13.00	13.00	1.00	0.80	0.80
22	15.40	14.30	14.30	1.10	0.88	0.88
24	16.80	15.60	15.60	1.20	0.96	0.96

DRAWG. NO. PSX-5556-0001

DRAWG. NO. PSX-5556-0001

REV.
SHT.

FILE NAME
P5556X61

$\nabla = 0$ $\blacktriangledown = 0$

REVISE ONLY ON CAD SYSTEM

REV. 3

THIS DRAWING CONTAINS INFORMATION THAT IS PROPRIETARY TO MOLEX INC. AND SHOULD NOT BE USED WITHOUT WRITTEN PERMISSION.

SHT. 6



PRODUCT SPECIFICATION

6-1-2 Plug And Receptacle / Receptacle And Vertical Header Assemblies
With Gold Plated Brass Or Phos. Bronze Terminals.

CKT. SIZE	Insertion (Kg. Max.)			Withdrawal (Kg. Min.)		
	Initial	6TH.	30TH.	Initial	6TH.	30TH.
2	0.90	0.80	0.80	0.07	0.07	0.07
3	1.35	1.20	1.20	0.11	0.11	0.11
4	1.80	1.60	1.60	0.14	0.14	0.14
5	2.25	2.00	2.00	0.18	0.18	0.18
6	2.70	2.40	2.40	0.21	0.21	0.21
7	3.15	2.80	2.80	0.25	0.25	0.25
8	3.60	3.20	3.20	0.28	0.28	0.28
9	4.05	3.60	3.60	0.32	0.32	0.32
10	4.50	4.00	4.00	0.35	0.35	0.35
11	4.95	4.40	4.40	0.39	0.39	0.39
12	5.40	4.80	4.80	0.42	0.42	0.42
14	6.30	5.60	5.60	0.49	0.49	0.49
16	7.20	6.40	6.40	0.56	0.56	0.56
18	8.10	7.20	7.20	0.63	0.63	0.63
20	9.00	8.00	8.00	0.70	0.70	0.70
22	9.90	8.80	8.80	0.77	0.77	0.77
24	10.80	9.60	9.60	0.84	0.84	0.84

DRAWG. NO. PSX-5556-0001

DRAWG. NO. PSX-5556-0001

REV.

SHT.

FILE NAME
P5556X71

▽ = 0

▼ = 0

REVISE ONLY ON CAD SYSTEM

REV. 3

THIS DRAWING CONTAINS INFORMATION THAT IS PROPRIETARY TO MOLEX INC. AND SHOULD NOT BE USED WITHOUT WRITTEN PERMISSION.

SHT. 7



PRODUCT SPECIFICATION

6-1-3 Receptacle And Right Angle Header Assemblies With Tin Or Gold Plating On Brass Or Phos. Bronze Terminals.

CKT. SIZE	Insertion (Kg. Max.)			Withdrawal (Kg. Min.)		
	Initial	6TH.	30TH.	Initial	6TH.	30TH.
2	2.90	2.70	2.70	0.10	0.08	0.08
3	4.35	4.05	4.05	0.15	0.12	0.12
4	5.80	5.40	5.40	0.20	0.16	0.16
5	7.25	6.75	6.75	0.25	0.20	0.20
6	8.70	8.10	8.10	0.30	0.24	0.24
7	10.15	9.45	9.45	0.35	0.28	0.28
8	11.60	10.80	10.80	0.40	0.32	0.32
9	13.05	12.15	12.15	0.45	0.36	0.36
10	14.50	13.50	13.50	0.50	0.40	0.40
11	15.95	14.85	14.85	0.55	0.44	0.44
12	17.40	16.20	16.20	0.60	0.48	0.48
14	20.30	18.90	18.90	0.70	0.56	0.56
16	23.20	21.60	21.60	0.80	0.64	0.64
18	26.10	24.30	24.30	0.90	0.72	0.72
20	29.00	27.00	27.00	1.00	0.80	0.80
22	31.90	29.70	29.70	1.10	0.88	0.88
24	34.80	32.40	32.40	1.20	0.96	0.96

DRAWG. NO. PSX-5556-0001

REV.
SHT.

FILE NAME
P5556X81

∇ = 0 ▼ = 0

REVISE ONLY ON CAD SYSTEM

REV. 3

SHT. 8

THIS DRAWING CONTAINS INFORMATION THAT IS PROPRIETARY TO MOLEX INC. AND SHOULD NOT BE USED WITHOUT WRITTEN PERMISSION.

DRAWG. NO. PSX-5556-0001



MOLEX INCORPORATED
LISLE, ILL. 60532 U.S.A.

PRODUCT SPECIFICATION

LETTER	REVISIONS
1	"X" RELEASED PER ECN U11273, 7-26-91, GEP, RJF
2	ADDED 4-2-8 & 4-2-9 PER ECN U30237, GEP, 2-12-93.
3	ADDED THUMB LATCH FORCE & KG., U31223, GEP, 9-30-94

DRAWG. NO. PSX-5556-0001

REV.
SHT.

FILE NAME
P5556X91

▽ = 0 ▼ = 0

REVISE ONLY ON CAD SYSTEM

REV. 3

THIS DRAWING CONTAINS INFORMATION THAT IS PROPRIETARY TO MOLEX INC. AND SHOULD NOT BE USED WITHOUT WRITTEN PERMISSION.

SHT. 9

DRAWG. NO. PSX-5556-0001

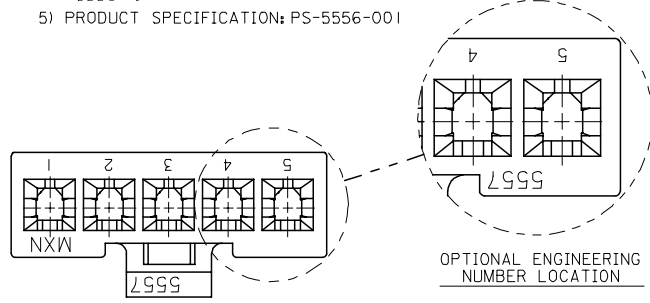
13 12 11 10 9 8 7 6 5 4 3 2 1

NOTES:

- 1) MATERIAL:
 BLANK: NYLON 6/6, 94V-2, COLOR: NATURAL.
 210 : NYLON 6/6, 94V-0, COLOR: NATURAL.
 210-BL : NYLON 6/6, 94V-0, COLOR: BLACK.
- 2) PART MATES WITH MOLEX PLUG #5559-*, VERTICAL HEADER #5566-*, AND RIGHT-ANGLE HEADER #5569-*.
- 3) PART IS DESIGNED IN METRIC.
- 4) PART IS FOR USE WITH MOLEX FEMALE TERMINAL #5556-*.
- 5) PRODUCT SPECIFICATION: PS-5556-001

CKT SIZE	DIM A
2	.378 (9.60)
4	.709 (18.00)
5	.874 (22.20)
6	1.039 (26.40)
7	1.205 (30.60)
8	1.370 (34.80)
9	1.535 (39.00)
10	1.701 (43.20)
11	1.866 (47.40)
12	2.031 (51.60)

PART NUMBER	ENG. NUMBER	CKT. SIZE	MATERIAL (SEE NOTE 1.)
39-01-4020	5557-02R2	2	94V-2
39-01-4021	5557-02R2-210	2	94V-0
39-01-4040	5557-04R2	4	94V-2
39-01-4041	5557-04R2-210	4	94V-0
39-01-4050	5557-05R2	5	94V-2
39-01-4051	5557-05R2-210	5	94V-0
50-30-4447	5557-05R2-210-BL	5	94V-0
39-01-4060	5557-06R2	6	94V-2
39-01-4061	5557-06R2-210	6	94V-0
39-01-4070	5557-07R2	7	94V-2
39-01-4071	5557-07R2-210	7	94V-0
39-01-4080	5557-08R2	8	94V-2
39-01-4081	5557-08R2-210	8	94V-0
39-01-4090	5557-09R2	9	94V-2
39-01-4091	5557-09R2-210	9	94V-0
39-01-4100	5557-10R2	10	94V-2
39-01-4101	5557-10R2-210	10	94V-0
39-01-4110	5557-11R2	11	94V-2
39-01-4111	5557-11R2-210	11	94V-0
39-01-4120	5557-12R2	12	94V-2
39-01-4121	5557-12R2-210	12	94V-0



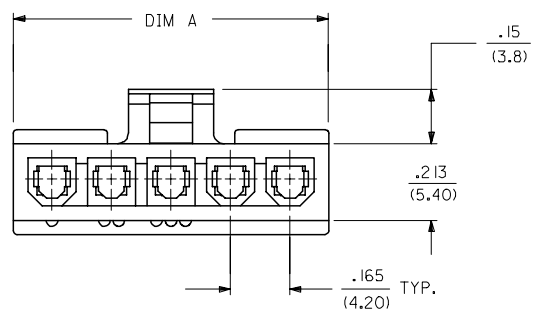
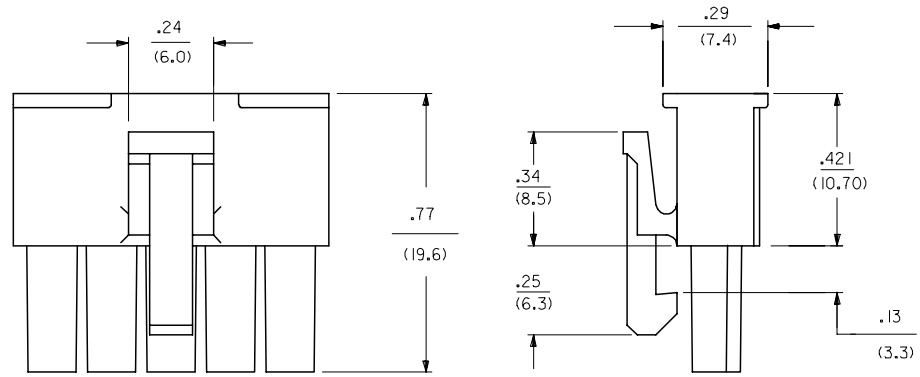
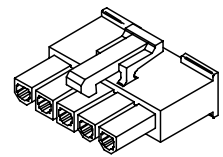
LEGEND:

CKT. SIZE _____ 5557-*** R2-***-***
 (02, 04-12)

RECEPTACLE
 (SINGLE ROW)

MATERIAL OPTION:
 (SEE NOTE 1)

COLOR:
 BLANK = NATURAL
 BL = BLACK



ADDED 5557-05R2-210-BL EC NO: UICP2006-0276 DRAWN/ISSUE 2005/08/09 CHKD: GPOLGAR 2005/08/09 APPR: JCOMERCJ 2005/08/11 REV DESCRIPTION	QUALITY SYMBOLS	GENERAL TOLERANCES (UNLESS SPECIFIED)	DIMENSION STYLE	SCALE	DESIGN UNITS	THIRD ANGLE PROJECTION																					
	$\nabla=0$ $\nabla=0$	<table border="1"> <thead> <tr> <th></th> <th>mm</th> <th>INCH</th> </tr> </thead> <tbody> <tr><td>4 PLACES</td><td>± .010</td><td>± .0004</td></tr> <tr><td>3 PLACES</td><td>± .015</td><td>± .0005</td></tr> <tr><td>2 PLACES</td><td>± .025</td><td>± .0010</td></tr> <tr><td>1 PLACE</td><td>± .038</td><td>± .0015</td></tr> </tbody> </table>		mm	INCH	4 PLACES	± .010	± .0004	3 PLACES	± .015	± .0005	2 PLACES	± .025	± .0010	1 PLACE	± .038	± .0015	IN/MM	4:1	INCH							
		mm	INCH																								
	4 PLACES	± .010	± .0004																								
3 PLACES	± .015	± .0005																									
2 PLACES	± .025	± .0010																									
1 PLACE	± .038	± .0015																									
	<table border="1"> <thead> <tr> <th></th> <th>mm</th> <th>INCH</th> </tr> </thead> <tbody> <tr><td>ANGULAR</td><td>±1/2°</td><td>± .005</td></tr> </tbody> </table>		mm	INCH	ANGULAR	±1/2°	± .005	<table border="1"> <tr><td>DRAWN BY</td><td>DATE</td></tr> <tr><td>KSS</td><td>2/15/89</td></tr> <tr><td>CHECKED BY</td><td>DATE</td></tr> <tr><td>RJF</td><td>2/15/89</td></tr> <tr><td>APPROVED BY</td><td>DATE</td></tr> <tr><td>RAS</td><td>2/15/89</td></tr> </table>	DRAWN BY	DATE	KSS	2/15/89	CHECKED BY	DATE	RJF	2/15/89	APPROVED BY	DATE	RAS	2/15/89	<table border="1"> <tr><td colspan="2">TITLE</td></tr> <tr><td colspan="2">MINI-FIT JR. RECEPTACLE (SINGLE ROW)</td></tr> </table>			TITLE		MINI-FIT JR. RECEPTACLE (SINGLE ROW)	
	mm	INCH																									
ANGULAR	±1/2°	± .005																									
DRAWN BY	DATE																										
KSS	2/15/89																										
CHECKED BY	DATE																										
RJF	2/15/89																										
APPROVED BY	DATE																										
RAS	2/15/89																										
TITLE																											
MINI-FIT JR. RECEPTACLE (SINGLE ROW)																											
	<table border="1"> <tr><td colspan="2">MATERIAL NO.</td></tr> <tr><td colspan="2">SEE CHART</td></tr> </table>	MATERIAL NO.		SEE CHART		<table border="1"> <tr><td colspan="2">DOCUMENT NO.</td></tr> <tr><td colspan="2">SD-5557-NR2*</td></tr> </table>	DOCUMENT NO.		SD-5557-NR2*		<table border="1"> <tr><td colspan="2">SHEET NO.</td></tr> <tr><td colspan="2">1 OF 1</td></tr> </table>		SHEET NO.		1 OF 1												
MATERIAL NO.																											
SEE CHART																											
DOCUMENT NO.																											
SD-5557-NR2*																											
SHEET NO.																											
1 OF 1																											

<table border="1"> <tr><td colspan="2">GENERAL TOLERANCES (UNLESS SPECIFIED)</td></tr> <tr><td>4 PLACES</td><td>± .010</td></tr> <tr><td>3 PLACES</td><td>± .015</td></tr> <tr><td>2 PLACES</td><td>± .025</td></tr> <tr><td>1 PLACE</td><td>± .038</td></tr> <tr><td>ANGULAR</td><td>±1/2°</td></tr> </table>	GENERAL TOLERANCES (UNLESS SPECIFIED)		4 PLACES	± .010	3 PLACES	± .015	2 PLACES	± .025	1 PLACE	± .038	ANGULAR	±1/2°	<table border="1"> <tr><td>DRAWN BY</td><td>DATE</td></tr> <tr><td>KSS</td><td>2/15/89</td></tr> <tr><td>CHECKED BY</td><td>DATE</td></tr> <tr><td>RJF</td><td>2/15/89</td></tr> <tr><td>APPROVED BY</td><td>DATE</td></tr> <tr><td>RAS</td><td>2/15/89</td></tr> </table>	DRAWN BY	DATE	KSS	2/15/89	CHECKED BY	DATE	RJF	2/15/89	APPROVED BY	DATE	RAS	2/15/89	<table border="1"> <tr><td colspan="2">TITLE</td></tr> <tr><td colspan="2">MINI-FIT JR. RECEPTACLE (SINGLE ROW)</td></tr> </table>		TITLE		MINI-FIT JR. RECEPTACLE (SINGLE ROW)	
GENERAL TOLERANCES (UNLESS SPECIFIED)																															
4 PLACES	± .010																														
3 PLACES	± .015																														
2 PLACES	± .025																														
1 PLACE	± .038																														
ANGULAR	±1/2°																														
DRAWN BY	DATE																														
KSS	2/15/89																														
CHECKED BY	DATE																														
RJF	2/15/89																														
APPROVED BY	DATE																														
RAS	2/15/89																														
TITLE																															
MINI-FIT JR. RECEPTACLE (SINGLE ROW)																															
<table border="1"> <tr><td colspan="2">MATERIAL NO.</td></tr> <tr><td colspan="2">SEE CHART</td></tr> </table>	MATERIAL NO.		SEE CHART		<table border="1"> <tr><td colspan="2">DOCUMENT NO.</td></tr> <tr><td colspan="2">SD-5557-NR2*</td></tr> </table>	DOCUMENT NO.		SD-5557-NR2*		<table border="1"> <tr><td colspan="2">SHEET NO.</td></tr> <tr><td colspan="2">1 OF 1</td></tr> </table>		SHEET NO.		1 OF 1																	
MATERIAL NO.																															
SEE CHART																															
DOCUMENT NO.																															
SD-5557-NR2*																															
SHEET NO.																															
1 OF 1																															

12 11 10 9 8 7 6 5 4 3 2 1