

SURFACE MOUNT CHIP CARRIER SOCKET

2/3

850 - SMT - PLCC

WITH PEG TYPE & WITHOUT PEG TYPE

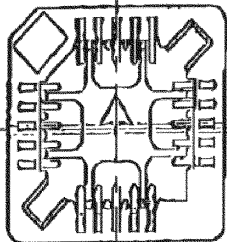
4.6m/m HIGHT



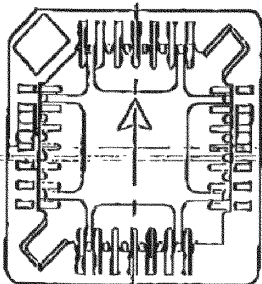
Reg. No. QOE 29016
Certificate No. QMS 2017

Element No. 6
Head office
Certification

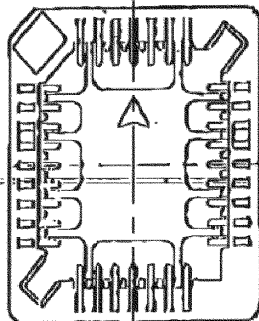
20P



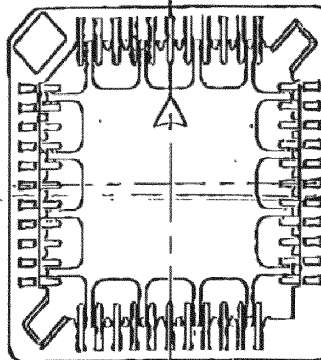
28P



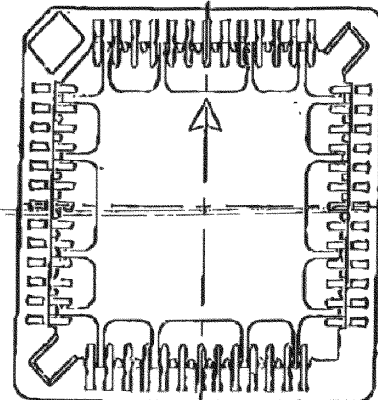
32P



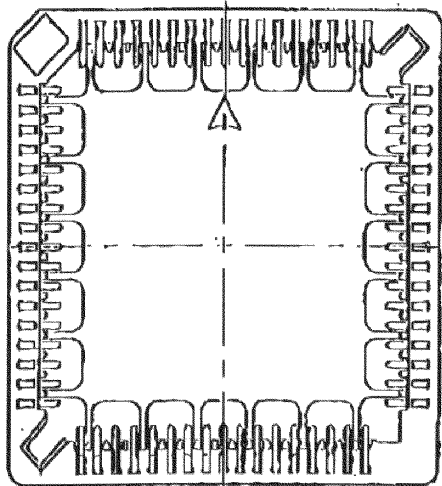
44P



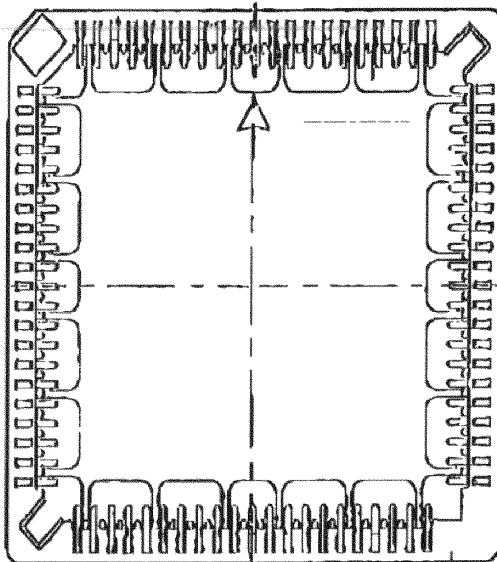
52P



68P



84P



Connector & Socket

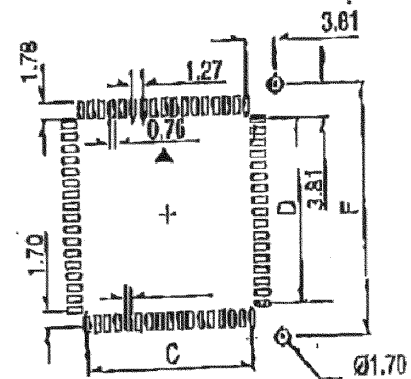
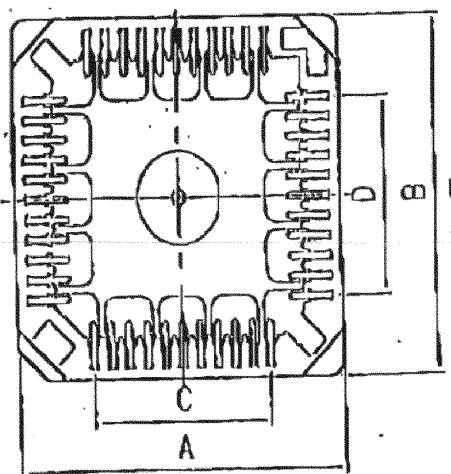
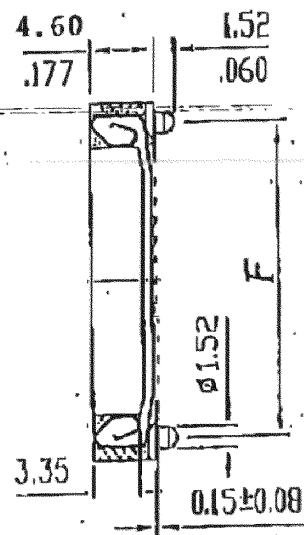
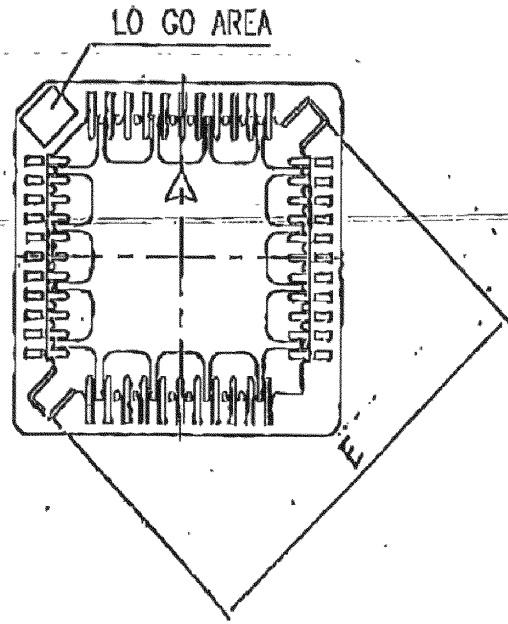
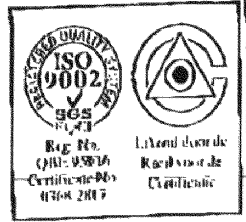
DRAW		SCALE	
DESIGN		CHECKED	
DATE	12/20/96	SHEET	1 OF 1

SURFACE MOUNT CHIP CARRIER SOCKET

850 - SMT - PLCC

WITH PEG TYPE & WITHOUT PEG TYPE

4.6mm HIGHT



P.C.B. LAYOUT POLARIZING PEG HOLES

	P TYPE					
	A±0.2	B±0.2	C±0.1	D±0.1	E±0.2	F±0.2
20	15.65	15.65	5.08	5.08	16.80	12.70
28	18.18	18.18	7.62	7.62	20.40	15.24
32	18.18	20.75	7.62	10.16	22.20	17.78
44	23.28	23.28	12.70	12.70	31.20	20.32
52	25.84	25.84	15.24	15.24	32.20	22.86
68	30.95	30.95	20.32	20.32	38.40	27.94
84	36.00	36.00	25.40	25.40	45.60	33.02

Connector & Socket

DRAW	SCALE
DESIGN	CHECKED
DATE 12/20/96	SHEET 1 OF 1