

Distributed by:

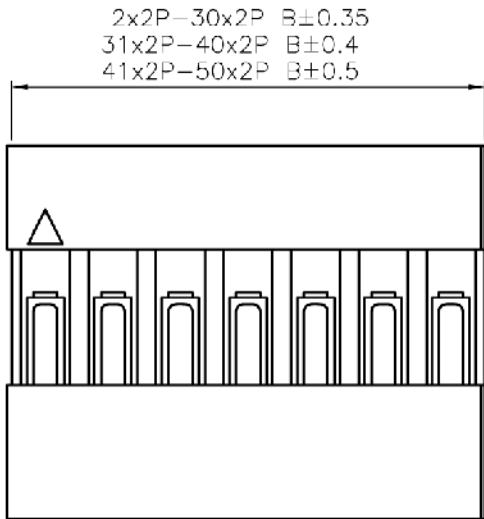
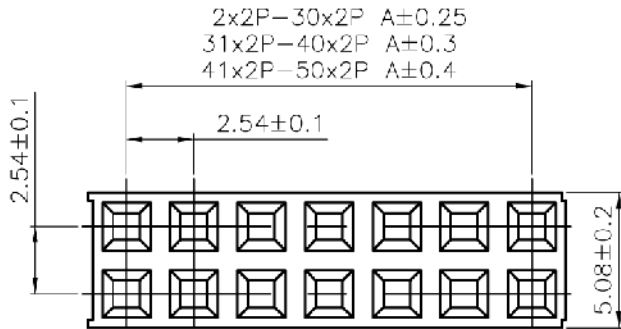
JAMECO[®]
ELECTRONICS

www.Jameco.com ♦ 1-800-831-4242

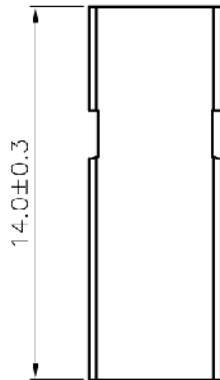
The content and copyrights of the attached
material are the property of its owner.

Jameco Part Number 157421

Date	Rev.	Description



Poles	Part No.	Dimensions(mm)		Poles	Part No.	Dimensions(mm)	
		A	B			A	B
4	JS-1105-02x2	2.54	5.08	44	JS-1105-22x2	53.34	55.88
6	JS-1105-03x2	5.08	7.62	46	JS-1105-23x2	55.88	58.42
8	JS-1105-04x2	7.62	10.12	48	JS-1105-24x2	58.42	60.96
10	JS-1105-05x2	10.12	12.70	50	JS-1105-25x2	60.96	63.50
12	JS-1105-06x2	12.70	15.24	52	JS-1105-26x2	63.50	66.04
14	JS-1105-07x2	15.24	17.78	54	JS-1105-27x2	66.04	68.58
16	JS-1105-08x2	17.78	20.32	56	JS-1105-28x2	68.58	71.12
18	JS-1105-09x2	20.32	22.86	58	JS-1105-29x2	71.12	73.66
20	JS-1105-10x2	22.86	25.40	60	JS-1105-30x2	73.66	76.20
22	JS-1105-11x2	25.40	27.94	62	JS-1105-31x2	76.20	78.74
24	JS-1105-12x2	27.94	30.48	64	JS-1105-32x2	78.74	81.20
26	JS-1105-13x2	30.48	33.02	66	JS-1105-33x2	81.20	83.82
28	JS-1105-14x2	33.02	35.56	68	JS-1105-34x2	83.82	86.36
30	JS-1105-15x2	35.56	38.10	70	JS-1105-35x2	86.36	88.90
32	JS-1105-16x2	38.10	40.64	72	JS-1105-36x2	88.90	91.44
34	JS-1105-17x2	40.64	43.18	74	JS-1105-37x2	91.44	93.98
36	JS-1105-18x2	43.18	45.72	76	JS-1105-38x2	93.98	96.52
38	JS-1105-19x2	45.72	48.26	78	JS-1105-39x2	96.52	99.06
40	JS-1105-20x2	48.26	50.80	80	JS-1105-40x2	99.06	101.60
42	JS-1105-21x2	50.80	53.34				



■ SPECIFICATIONS

- Voltage Rating : 250 V AC/DC
- Current Rating : 3A AC/DC
- Withstanding Voltage : 1000V AC/minute
- Insulation Resistance : 1000MΩ min
- Temperature Range : - 20°C to + 85°C
- Contact Resistance : 20mΩ max

■ HOUSING

- Part No. : JS-1105-XXx2
- Poles : 2x2-40x2 (Dual Row)
- Material : Noryl UL94V-1
- Q' ty : 1000 pcs./Bag

DCC. NO.
A4 DRAWING NO.

MATERIAL		GOLDSUN ELECTRONICS CO., LTD.			
		JAMECO NO.	GOLDSUN NO.		
			157421	JS-1105-10-R	
DRWN: Kiki Chen		Description			Rev.
VERIFY PEOPLE: Ada Zheng , Ivy Lan		CONNECTOR			1
UNIT: mm	SCALE:	SHEET 1 OF 1	CAS No:	ERN No:	