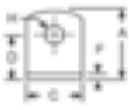


Fig. 1



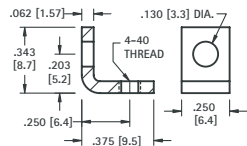
Fig. 2



KEYSTONE Right Angle (L) Mounting Brackets

| Jameco Part No. | Keystone Part No. | Fig. | Dimensions (in.) | | | | | | | | Material | Plating | Pricing | | |
|--|-------------------|------|------------------|------|------|------|------|------|--------|--------|----------|---------|--------------|--------------|--------------|
| | | | A | B | C | D | E | F | G Dia. | H Dia. | | | 1 | 10 | 100 |
| Non-Threaded Clear Hole Universal Mounting Brackets | | | | | | | | | | | | | | | |
| 2203135 | 613 | 2 | .390 | .453 | .375 | .234 | .299 | .032 | .128 | .147 | Brass | Nickel | \$.39 | \$.35 | \$.29 |
| 2203151 | 4335 | 1 | .562 | .562 | .500 | .412 | .411 | .062 | .120 | .120 | Steel | Nickel | .45 | .39 | .29 |
| 2203160 | 618 | 2 | .628 | .628 | .375 | .378 | .378 | .050 | .169 | .169 | Brass | Nickel | .59 | .49 | .39 |
| Threaded Hole Universal Mounting Brackets | | | | | | | | | | | | | | | |
| 2203178 | 612 | 1 | .343 | .375 | .250 | .203 | .250 | .062 | 4-40 | .130 | Steel | Zinc | \$.29 | \$.25 | \$.19 |
| 1581530 | 621 | 1 | .343 | .375 | .250 | .203 | .250 | .062 | 4-40 | 4-40 | Steel | Zinc | .35 | .29 | .25 |
| 2203186 | 616 | 1 | .453 | .312 | .250 | .265 | .187 | .047 | 4-40 | .136 | Brass | Tin | .49 | .45 | .35 |
| 2203194 | 634 | 1 | .375 | .375 | .281 | .218 | .218 | .032 | 6-32 | .140 | Brass | Nickel | .49 | .45 | .39 |
| 2203207 | 614 | 2 | .420 | .343 | .312 | .250 | .197 | .032 | 6-32 | .144 | Brass | Tin | .29 | .25 | .19 |
| 2203223 | 617 | 2 | .578 | .500 | .500 | .328 | .299 | .062 | 6-32 | .165 | Steel | Tin | .49 | .45 | .35 |

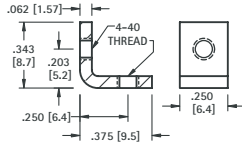
4-40 THREAD



MATERIAL:
.062 (1.57) thick Steel,
Zinc Plate

CAT. NO. 612

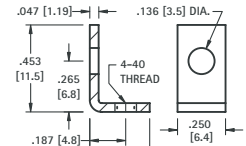
4-40 THREAD



MATERIAL:
.062 (1.57) thick Steel,
Zinc Plate

CAT. NO. 621

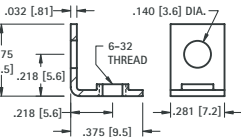
4-40 THREAD



MATERIAL:
.047 (1.19) thick Brass,
Tin Plate

CAT. NO. 616

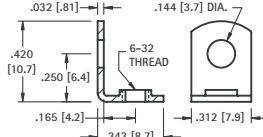
6-32 THREAD



MATERIAL:
.032 (.81) thick Brass,
Nickel Plate

CAT. NO. 634

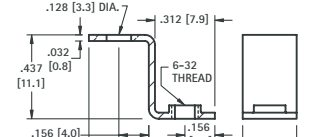
6-32 THREAD



MATERIAL:
.032 (.81) thick Brass,
Tin Plate

CAT. NO. 614

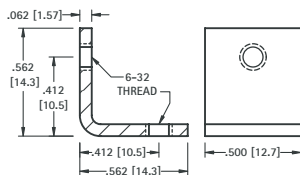
6-32 THREAD



MATERIAL:
.032 (.81) thick Brass,
Tin Plate

CAT. NO. 630

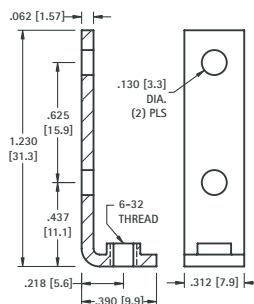
6-32 THREAD



MATERIAL:
.062 (1.57) thick Steel,
Nickel Plate

CAT. NO. 4334

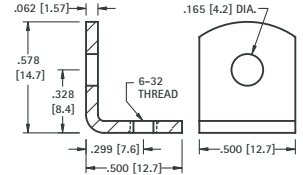
6-32 THREAD



MATERIAL:
.062 (1.57) thick Steel,
Nickel Plate

CAT. NO. 708

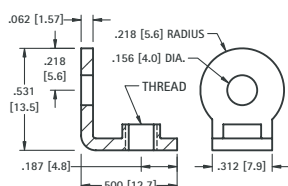
6-32 THREAD



MATERIAL:
.062 (1.57) thick Steel,
Tin Plate

CAT. NO. 617

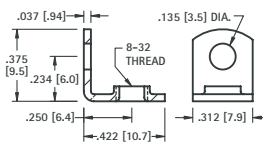
6-32 or 8-32 THREAD



MATERIAL:
.062 (1.57) thick Brass,
Nickel Plate

| CAT. NO. | THREAD |
|----------|--------|
| 4332 | 6-32 |
| 4333 | 8-32 |

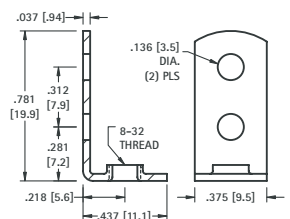
8-32 THREAD



MATERIAL:
.037 (.94) thick Brass,
Tin Plate

CAT. NO. 611

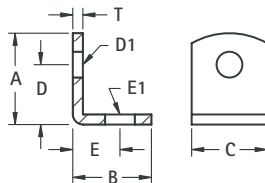
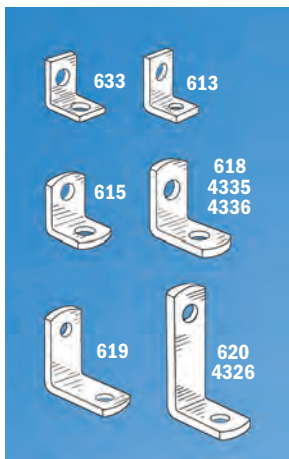
8-32 THREAD



MATERIAL:
.037 (.94) thick Steel,
Tin Plate

CAT. NO. 631

UNIVERSAL CLEAR HOLE BRACKETS



| CAT. NO. | A | B | C | D | D HOLE DIAMETER | E | E HOLE DIAMETER | T | MATERIAL | FINISH |
|----------|--------------|-------------|-------------|-------------|-----------------|-------------|-----------------|-------------|----------|--------|
| 633 | .375 (9.5) | .375 (9.5) | .281 (7.1) | .218 (5.5) | .140 (3.6) | .218 (5.5) | .140 (3.6) | .032 (.81) | Brass | Nickel |
| 613 | .390 (9.9) | .453 (11.5) | .375 (9.5) | .234 (5.9) | .147 (3.7) | .299 (7.6) | .128 (3.3) | .032 (.81) | Brass | Nickel |
| 615 | .420 (10.7) | .343 (8.7) | .281 (7.1) | .281 (7.1) | .144 (3.7) | .203 (5.2) | .128 (3.3) | .032 (.81) | Brass | Tin |
| 4335 | .562 (14.3) | .562 (14.3) | .500 (12.7) | .412 (10.5) | .120 (3.0) | .411 (10.4) | .120 (3.0) | .062 (1.57) | Steel | Nickel |
| 4336 | .562 (14.3) | .562 (14.3) | .500 (12.7) | .412 (10.5) | .144 (3.7) | .412 (10.5) | .144 (3.7) | .062 (1.57) | Steel | Nickel |
| 618 | .628 (16.0) | .628 (16.0) | .375 (9.5) | .378 (9.6) | .169 (4.3) | .378 (9.6) | .169 (4.3) | .050 (1.27) | Brass | Tin |
| 619 | .687 (17.4) | .687 (17.4) | .375 (9.5) | .500 (12.7) | .144 (3.7) | .500 (12.7) | .144 (3.7) | .032 (.81) | Steel | Tin |
| 4326 | 1.013 (25.7) | .487 (12.4) | .312 (7.9) | .816 (20.7) | .140 (3.6) | .332 (8.4) | .140 (3.6) | .050 (1.27) | Steel | Nickel |
| 620 | 1.156 (29.4) | .656 (16.7) | .375 (9.5) | .906 (23.0) | .169 (4.3) | .420 (10.7) | .169 (4.3) | .032 (.81) | Steel | Tin |

BOARD BRACKETS

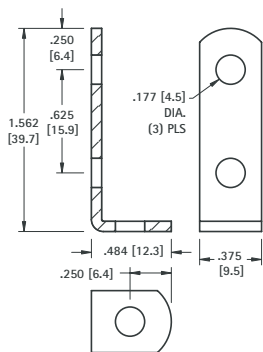
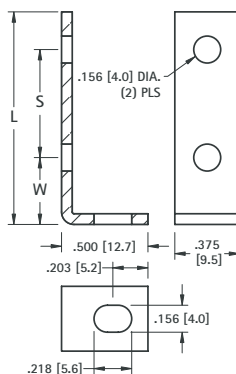
Originally designed for our line of standardized terminal boards; these brackets can also be used in other applications.

Choice of Steel or Aluminum

MATERIALS:

.062 (1.57) thick Steel, Nickel Plate
.062 (1.57) thick Aluminum

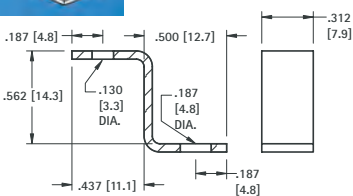
| STEEL CAT. NO. | ALUMINUM CAT. NO. | W | L | S | For Use With Board No.'s (Refer to page 130) | | |
|----------------|-------------------|------------|--------------|--------------|--|-------|-------|
| 1556 | 622 | .375 (9.5) | 1.625 (41.3) | 1.000 (25.4) | 15032 | 15072 | 15092 |
| 1567 | 623 | .375 (9.5) | 2.125 (54.0) | 1.500 (38.1) | 15033 | 15073 | 15093 |
| 1568 | 624 | .375 (9.5) | 2.625 (66.7) | 2.000 (50.8) | 15034 | 15074 | 15094 |
| 1569 | 625 | .375 (9.5) | 3.125 (79.4) | 2.500 (63.5) | 15035 | 15075 | 15095 |
| 1570 | 626 | .281 (7.1) | 1.187 (30.1) | .750 (19.1) | 15022 | 15024 | 15030 |
| 1571 | 627 | .281 (7.1) | 1.625 (41.3) | 1.187 (30.1) | 15036 | 15076 | 15096 |



CAT. NO. 1564

MATERIAL:

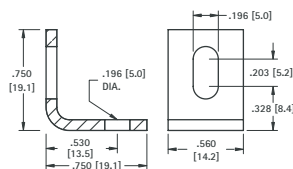
.062 (1.57) thick Steel, Nickel Plate



CAT. NO. 4325

MATERIAL:

.050 (1.27) thick Steel, Nickel Plate



CAT. NO. 4337

MATERIAL:

.080 (2.03) thick Aluminum

THREADED PC MOUNT BRACKETS

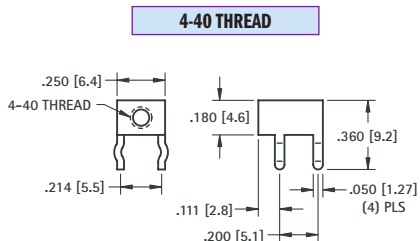
- Snaps in for wave soldering
- Reduces assembly time
- Easily mount into predrilled or punched holes
- Stable no rock design



SNAP-IN PC MOUNT



For screw selection refer to pages 79 and 123

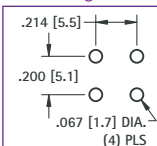


MATERIAL:

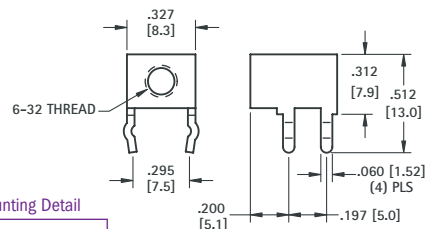
.032 (.81) thick Brass, Tin Plate

CAT. NO. 7774

Mounting Detail



6-32 THREAD



MATERIAL:

.032 (.81) thick Brass, Tin Plate

CAT. NO. 7779

Mounting Detail

