

Distributed by:

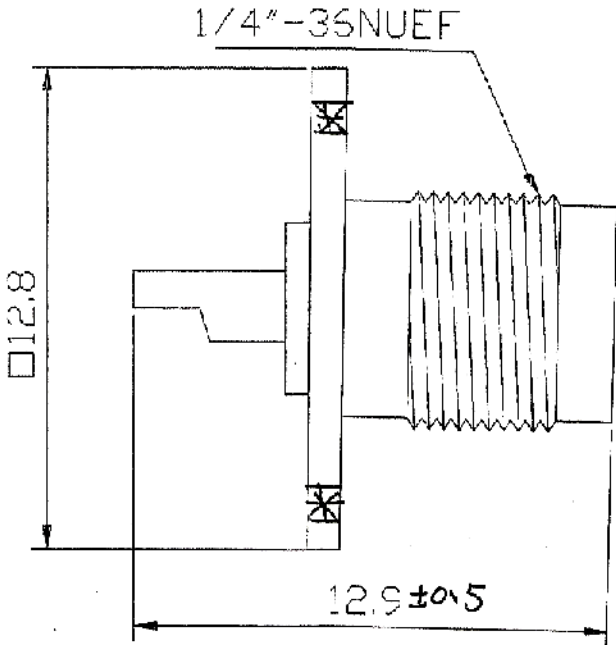
**JAMECO**<sup>®</sup>  
ELECTRONICS

**www.Jameco.com ♦ 1-800-831-4242**

The content and copyrights of the attached  
material are the property of its owner.

Jameco Part Number 159531

Date	Rev.	Description



BODY	BRASS	GOLD
PIN	BRASS	GOLD
INSULATOR	TEFLON	WHITE

DCC. NO.
A4 DRAWING NO.

MATERIAL		<b>GOLDSUN ELECTRONICS CO., LTD.</b>	
JAMECO NO. <b>159531</b>		GOLDSUN NO. CH-7814	
DRAWN: Kiki Chen		Description SMA FEMALE CHASSIS MOUNT	
VERIFY PEOPLE: Ada Zheng , Ivy Lan		UNIT: mm	SCALE: SHEET 1 OF 1
		CAS No: ERN No:	Rev. 1