

Distributed by:

JAMECO[®]
ELECTRONICS

www.Jameco.com ♦ 1-800-831-4242





The content and copyrights of the attached
material are the property of its owner.

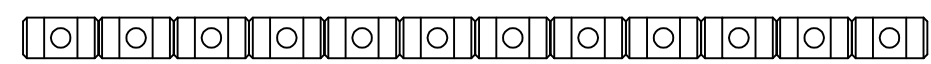
Jameco Part Number 164815

| | | | |
|------|------|-------------|----------|
| SIGN | DATE | DESCRIPTION | APPROVER |
| | | | |

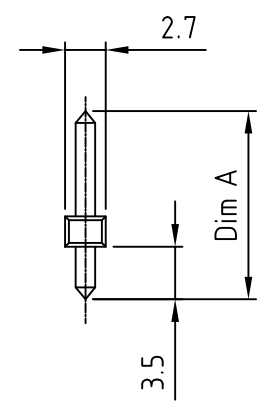
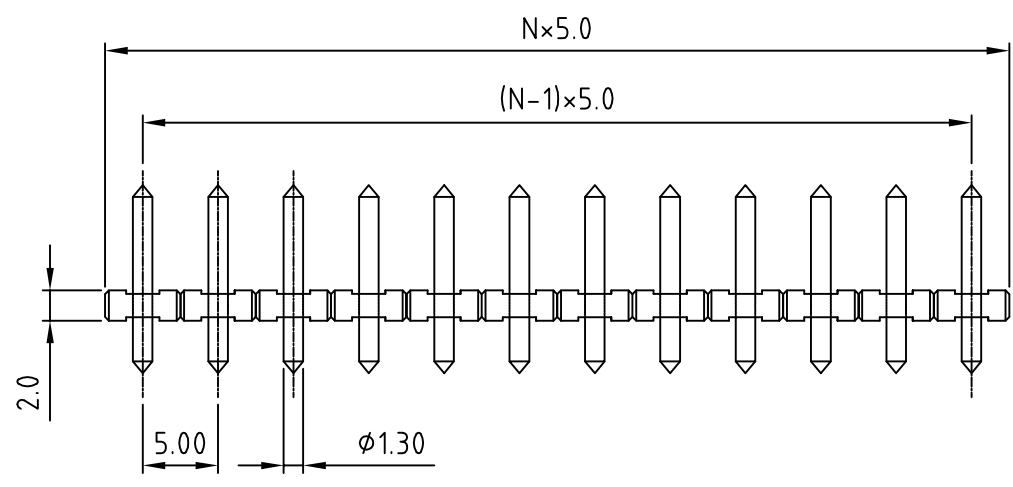
THIS IS CAD DRAWING, DO NOT REVISE MANUALLY!!!

- Material:
- Solid PIN: Brass(CuZn)
 - Surface of solder tail: Tin plated
 - Insulator(housing): Thermoplastic (UL94V-0)

- Electrical:
- | | | | | |
|--------------------------|---|-------|-------|-------|
| | UL | CSA | VDE | TUV |
| ● Voltage rating: | 300V | 300V | 300V | 300V |
| ● Current rating: | 10A | 10A | 12A | 15A |
| ● Withstanding Voltage: | 1.6KV | 1.6KV | 2.5KV | 2.5KV |
| ● Operating temperature: | -30°C to +105°C | | | |
| ● Soldering temperature: | 250°C±10°C/5 Sec | | | |
| ● Safety Approval: |     | | | |
- RoHS Compliant



N = Number of contact



PART NUMBER:

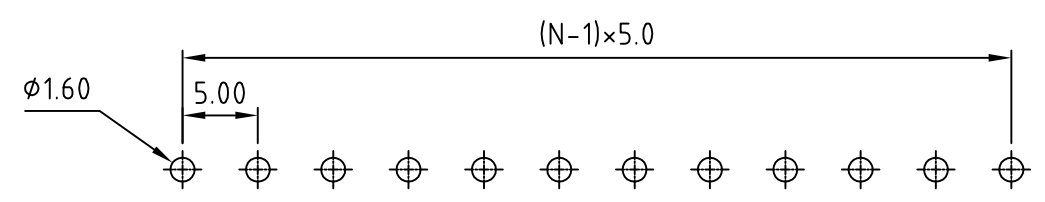
OSTOPXX0000

No. of Poles
02: Poles
... ..
24: Poles

- Dim A Length
- 0 12.5mm (phi 1.3 - (Standard))
 - 1 13.0mm (Up phi 1.3 Down phi 1.0)
 - 2 12.5mm (Up phi 1.3 Down phi 1.0)
 - 3 11.5mm (phi 1.3)
 - 4 14.2mm (phi 1.3)
 - 5 17.5mm (phi 1.3)
 - 6 20.0mm (phi 1.3)
 - 7 18.0mm (Up phi 1.3 Down phi 1.0)
 - 8 16.2mm (Up phi 1.3 Down phi 1.0)
 - 9 16.5mm (phi 1.3)
 - A 21.0mm (phi 1.1)
 - B 10.0mm (phi 1.0)
 - C 12.7mm (phi 1.1)
 - D 16.3mm (phi 1.1)
 - F 12.5 x 8.8mm Bent pin (phi 1.3)

non-standard may require MOQ

P.C.B. LAYOUT



THESE DRAWINGS AND SPECIFICATIONS ARE THE PROPERTY OF ON-SHORE TECHNOLOGY, INC. AND SHALL NOT BE REPRODUCED, COPIED OR USED IN ANY MANNER WITHOUT THE PRIOR WRITTEN CONSENT OF ON-SHORE TECHNOLOGY, INC.



| | | | | | |
|-----------------------|-----------------------|---------------------------|--------------------|-------------------------|-------|
| TITLE | | OSTOP 5.0mm Series 2p-24p | | | |
| PART NO. | | OSTOPXX0000 | | DWG NO. OSTOPXX0000.DWG | |
| APPROVED | CHECKED | DESIGNED | DRAWN | CUST NO. | |
| Shi Jun 2006.10.30 | Shi Jun 2006.10.30 | Tony 2006.10.30 | Tony 2006.10.30 | | |
| | | | | Tolerance | |
| | | | | X. | ±0.50 |
| | | | | X.X | ±0.30 |
| | | | | X.XX | ±0.10 |
| | | | | X° | ±1° |
| SHEET: 01/01 | | | | UNIT: mm | |
| | | | | SCALE: NONE | |
| | | | | REV.: D | |