

EMS MACHINE PIN SOCKET (SIP & DIP)

1. FEATURES:

- 1-1 Funnel shaped four-fingered and six-fingered contacts provide easy IC insertion and withdrawal, high reliability.
- 1-2 Gold plated contacts to ensure low contact resistance and Tin plated terminal to prevent contamination during soldering.
- 1-3 All plastics are UL 94V-0 grade fire retardant plastics.
- 1-4 Fit standard pitch with 2.54 mm x 2.54 mm (0.100 " x 0.100 ") pin spacing.

2. SPECIFICATION:

2-1 ELECTRICAL

- | | |
|-----------------------------|--------------------------|
| 2-1-1 Contact Rating | 1 Amp DC Max. |
| 2-1-2 Contact Resistance | 10 m Max. |
| 2-1-3 Insulation Resistance | 10 M Min. at 100 VDC |
| 2-1-4 Dielectric Strength | 1000 VAC Min for 60 sec. |
| 2-1-5 Capacitance between | 0.9 pF Max adjacent pin |

2-2 MECHANICAL AND ENVIRONMENTAL

2-2-1 Temperature Rating

Operating -55 to +125

2-2-2 Life cycle

100 cycles Min.

(with insertion and withdrawal)

2-2-3 Humidity

90 % to 95 % RH,

40 for 96 Hrs

2-2-4 Vibration

10 to 55 Hz for 6 Hrs

2-2-5 Solderability

230 ± 5 for

5±0.5 seconds 95 % coverage

2-2-6 Soldering Heat

After 260±5 for 5±1 sec.

shall have no deterioration

3. MATERIALS

3-1 Sleeve: Brass.

3-2 Clip: Beryllium copper; gold plated over nickel.

5. PACKING

5-1 PACKING METHOD

Sockets are packed into IC tubes as an inner packing unit and then IC tubes are budled together with rubber bands.

However single row sockets are packed in plastic bags.

5-2 INFORMATION ON THE LABEL.

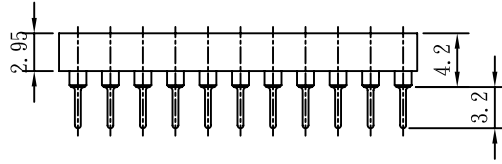
- | | |
|-------------------|-------------------------|
| (1) DESCRIPTION. | (6) ECE MARK. |
| (2) LOT NO. | (7) QC STAMP. |
| (3) REPROCESS NO. | (8) DATE. |
| (4) QUANTITY. | (9) MANUFACTURERS NAME. |
| (5) TESTER NO. | |

6. DRAWINGS

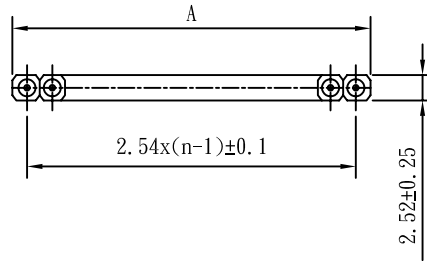
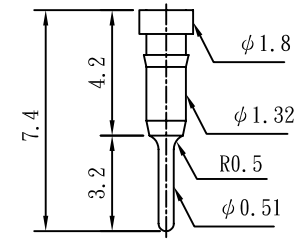
Socket dimensions : see attached drawing.

P.C.B. layout diagram : see attached drawing.

6100-1xXX Series



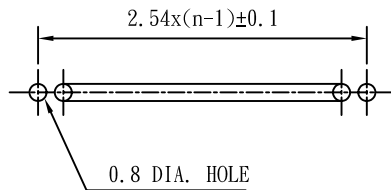
STANDARD PIN CONSTRUCTION



DIMENSION TABLE

PART NO.	NO. PINS	A±0.2mm
EMS1001XX	1	2.5
EMS1002XX	2	5.1
EMS1004XX	4	10.1
EMS1006XX	6	15.2
EMS1007XX	7	17.7
EMS1008XX	8	20.3
EMS1010XX	10	25.4
EMS1014XX	14	35.5
EMS1015XX	15	38.1
EMS1016XX	16	40.6
EMS1018XX	18	45.7
EMS1020XX	20	50.8
EMS1022XX	22	55.9
EMS1024XX	24	61.0
EMS1028XX	28	71.1
EMS1030XX	30	76.2
EMS1032XX	32	81.3
EMS1036XX	36	91.4
EMS1040XX	40	101.6
EMS1048XX	48	121.9
EMS1064XX	64	162.5

P. C. B LAYOUT (TOP VIEW)



NO.	DETAILS	ALTERED BY	DATE	NORMAL TOLERANCE		PART NUMBER				UNIT	MM(INCH)	PART NAME	EMS		
				RANGE	TOLERANCE	MATERIAL				SCALE	5 : 3	TYPE	SIP		
				0 - 1	±0.1	CHECK	Golden	DESIGN	Golden	DRAWN	Golden	QUANTITY	-----	FILE NAME	EMS10xx34B. DWG
			1 - 4	±0.3	PROCESSING							-----	ASSEMBLY NUMBER	-----	
			4 - 16	±0.5	PROJECTION								SURFACE TREATMENT	-----	
			16 - 63	±0.8											
			63 - 250	±1.0											

