

Distributed by:

JAMECO[®]
ELECTRONICS

www.Jameco.com ♦ 1-800-831-4242

The content and copyrights of the attached
material are the property of its owner.

Jameco Part Number 1815711

MICRO SWITCH

A DIVISION OF MINNEAPOLIS-HONEYWELL REGULATOR COMPANY
 PHOENIX, ARIZONA
 FED. MFR. CODE 91929

SWITCH-BASIC

CATALOG LISTING

1HS6

MILITARY STANDARD
 MS 25011-4

(M) 1HS6
 ISSUE 6

1HS6

PAGE 1 OF 1

M

DRAWING
 NUMBER

17

ISSUE

REVISIONS

A C094121
 DLT
 2 APR 99

REPLACES

RELEASE NO.

CHECK

CHECK

22 SEP 60

GCH

CHECK

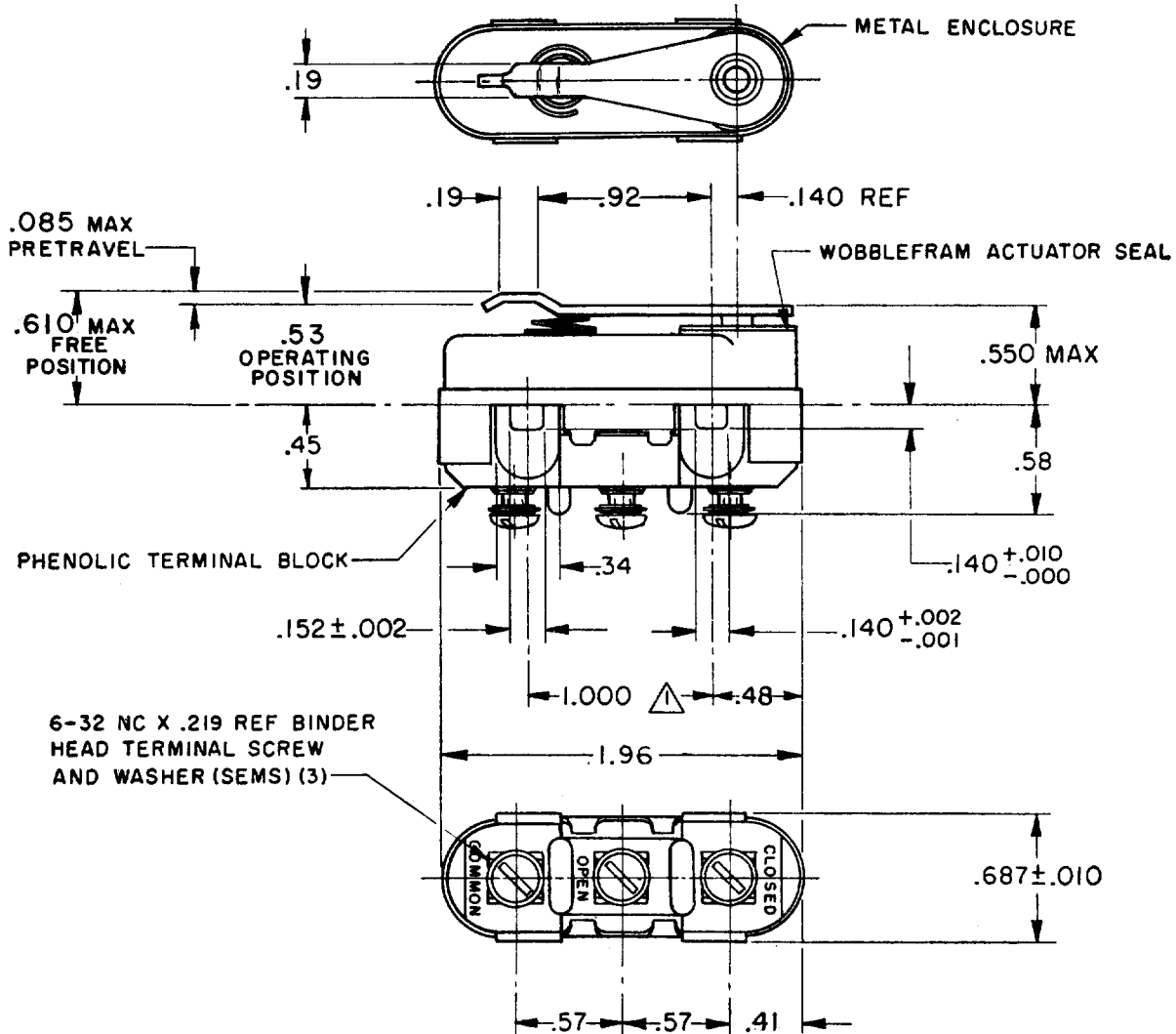
60

14 SEP 60

LMH

FORMTEK

FO-50378



6-32 NC X .219 REF BINDER
 HEAD TERMINAL SCREW
 AND WASHER (SEMS) (3)

NOTES

- ▲ MOUNTING HOLES WILL ACCEPT PINS OR SCREWS OF .139 MAX DIA ON 1.000 ±.002 CENTERS
- 2- TRAVEL CHARACTERISTICS ARE REFERENCED FROM THE UPPER SURFACE OF THE MOUNTING HOLES WITH THIS CONSTRUCTION
- 3- FOR USE IN AMBIENT TEMPERATURE RANGE FROM MINUS 65° TO PLUS 250°F

THIS DRAWING COVERS A PROPRIETARY ITEM AND IS THE PROPERTY OF MICRO SWITCH, A DIVISION OF MINNEAPOLIS-HONEYWELL REGULATOR CO. THIS DRAWING IS NOT TO BE COPIED OR USED WITHOUT THE APPROVAL OF MICRO SWITCH.

CHARACTERISTICS		ELECTRICAL DATA			SCALE FULL	
OPERATING FORCE-----22-28 OZ		CONTACT ARRANGEMENT S P D T			DO NOT SCALE PRINT	
RELEASE FORCE----- 4 OZ MIN		LOAD CURRENT CAPACITY (AMPERES) 28 VDC 115 VAC, 60 HZ 120 VDC			UNLESS OTHERWISE SPECIFIED	
DIFFERENTIAL TRAVEL-----.020 MAX					DIMENSIONS ARE IN INCHES	
OVERTRAVEL-----.010 MIN		RESISTIVE	25	1	.5	TOLERANCES ARE: ONE PLACE (.0) ±.030 TWO PLACE (.00) ±.015 THREE PLACE (.000) ±.008 ANGLES ±
		INDUCTIVE	8	1	.5	
-L277-		5A-28 VDC			WEIGHT 1.6 OZ MAX	