

Distributed by:

JAMECO[®]
ELECTRONICS

www.Jameco.com ♦ 1-800-831-4242

The content and copyrights of the attached
material are the property of its owner.

Jameco Part Number 1917195

MICRO SWITCH
a Honeywell Division

FED. MFG. CODE 91929

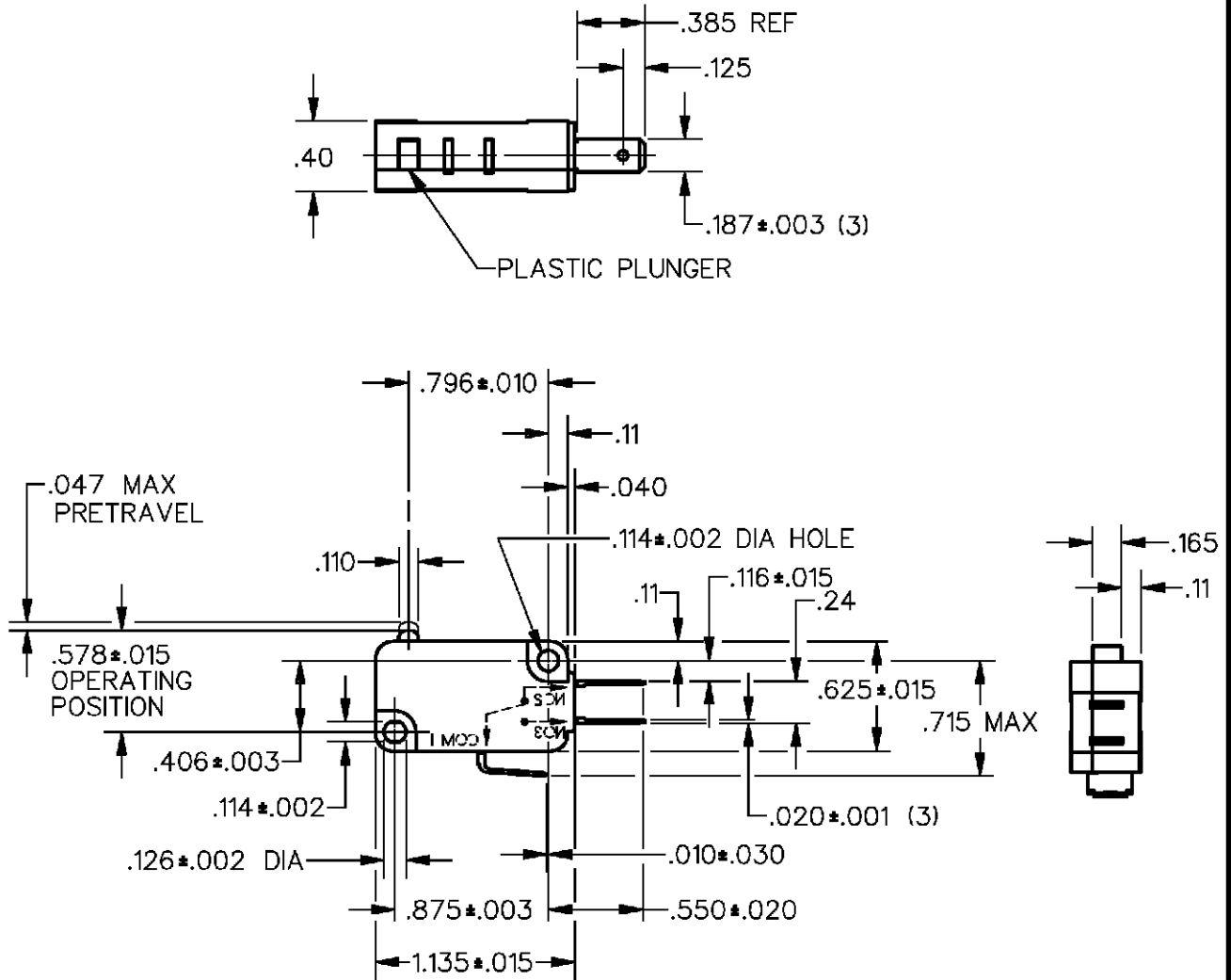
SWITCH-BASIC

CATALOG LISTING
V7-1S17D8

CW-B8601

CATALOG LISTING
V7-1S17D8
PAGE 1 OF 1
REPLACES
RELEASE NO. PR-17794
ISSUE
M
7

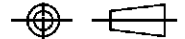
REVISIONS	
A	CO-68464 26 SEP 90 BAB
B	CO-74431 26 FEB 93 JWB
C	CO-77116 31 MAR 94 DCS
D	CO-082776 5 APR 96 J A F
E	CO-092478 21 APR 98 T S M
F	CO-93311 21 OCT 98 TSM



NOTES
1 - IN INSPECTION, DO NOT BURN OUT - GOLD CONTACTS
2 - IN INSPECTION, DO NOT EXCEED 10 VDC, .1A RESISTIVE LOAD

THIS DRAWING COVERS A PROPRIETARY ITEM AND IS THE PROPERTY OF MICRO SWITCH, A DIVISION OF HONEYWELL. THIS DRAWING IS NOT TO BE COPIED OR USED WITHOUT THE APPROVAL OF MICRO SWITCH.

THIRD ANGLE PROJECTION



CHARACTERISTICS	ELECTRICAL DATA	SCALE FULL	DO NOT SCALE PRINT
OPERATING FORCE --- 150 GRAMS MAX	CONTACT ARRANGEMENT S P D T	UNLESS OTHERWISE SPECIFIED TOLERANCES ARE ONE PLACE (.0) ±.030 TWO PLACE (.00) ±.015 THREE PLACE (.000) ±.005 ANGLES ±	
RELEASE FORCE --- 25 GRAMS MIN	0.1A 125 VAC		
DIFFERENTIAL TRAVEL --- .002-.010	L142		
OVERTRAVEL --- .050 MIN			
RELEASE TRAVEL --- .010 MIN			
FREE POSITION --- .625 MAX		WEIGHT	

FORMTEK
DRAWN
WJM 20 FEB 90
CHECK
DAW 23 FEB 90