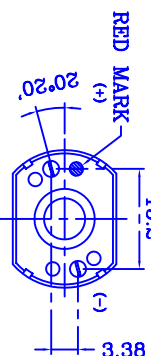
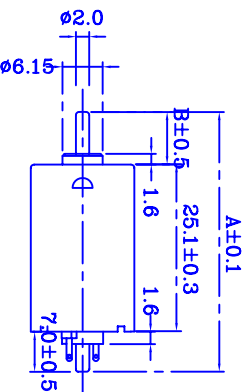
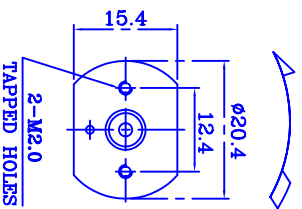


# HFH-130RH-15210

Precious Metal -Brush Motors  
 Typical Applications/Precision Instruments  
 • CD Player  
 • VTR  
 Household Appliances  
 • Electric Shaver  
 • Tooty Brushes

DIRECTION OF ROTATION



UNIT: MILLIMETERS

NOTES:

1. DIM"A" IS: 41.0 mm
2. FRONT EXTENSION DIM"B" IS: 8.0 mm  
MEASURED WITH SHAFT PUSHED TO PLASTIC END CAP
3. END PLAY 0.50 mm max.
4. DIRECTION OF ROTATION: ANTI-CLOCKWISE  
WHEN VIEWING MOTOR OUTPUT END WITH POSITIVE VOLTAGE APPLIED TO POSITIVE TERMINAL

TEST CONDITION :

1. RATED VOLTAGE : 3.0 VDC
2. OPERATING TEMPERATURE RANGE : -10 °C----- 60 °C

AT NO LOAD :

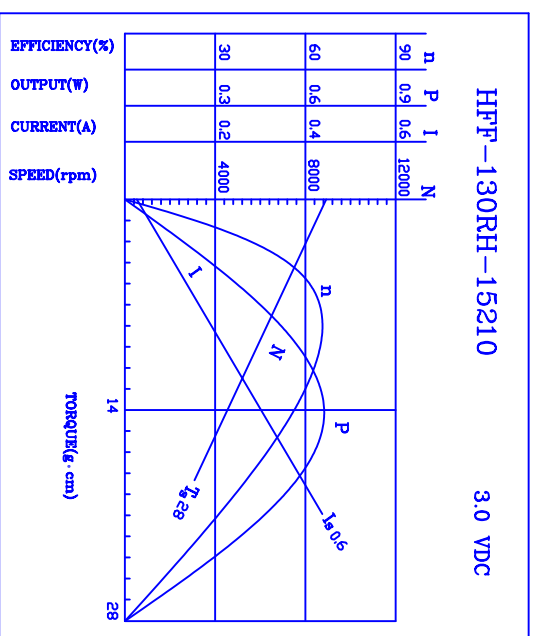
1. CURRENT : 0,045 A max
2. SPEED : 5400±8% rpm

AT MAXIMUM EFFICIENCY :

1. CURRENT : 0,17 A
2. OUTPUT : 0,26 W
3. SPEED : 4280 rpm
4. TORQUE : 5,8 g . cm

AT STALL :

1. CURRENT : 0,6 A
2. TORQUE : 28 g . cm



CUSTOMER NO.	DRAW BY	YUFENG	CHECKED BY	APPROVED BY	DATE
					10/12/2009