

Date	Rev.	Description

MATERIAL:

Insulator: A: 45% Glasses filled in NYLON9T UL-94V-0 Color:Black
 Insulator: B: 40% Glasses filled in P.P.S. UL-94V-0 Brown.
 Contact: Phosphor Bronze, 0.20mm Thickness.
 Plated: Tin Plated 160u" over Nickel. (Lead Free)

MECHANICAL PERFORMANCE:

Durability: Per MIL-STD-1344, Method 2016, 25 Cycles.
 Vibration: Per MIL-STD-810C, Method 514.2 10-200,000Hz 5G's.
 Shock: Per MIL-STD-810C, Method 516.2, 35G's.
 Acceleration: Per MIL-STD-810C, Method 513.2, 15G's.
 Contact Force: 210g/per pin.

ELECTRICAL PERFORMANCE:

Contact Interface Resistance:
 Initial: 6.5 Milliohms Average.
 Final: 15.0 Milliohms Average Max. After Testing.
 Insulation Resistance: 10000 Megohms min.
 Dielectric Strength: 1000VAC continuous for 1 minute.
 Operating and Storage Temperature: -40°C to +105°C.

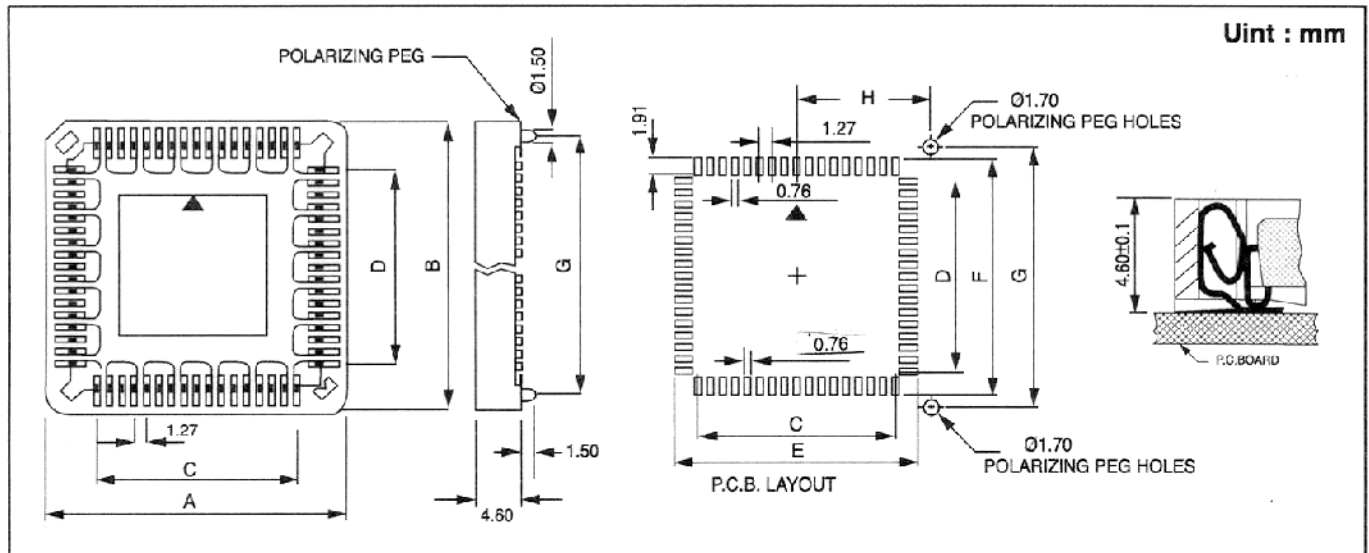
FEATURES:

- Applications Include All Electronic PC Boards Requiring Use of a Socket with Same Footprints as Most Common Plastic Leaded Chip Carrier.
- Accepts Molded Plastic Chip Carriers Conforming to JEDEC Specification MO-047 for Square and MO-052 for Rectangular Configuration.
- Visual and Mechanical Polarization for PLCC Insertion.
- Open Frame Design for Ease of Contact Inspection and Repair.
- Optional PCB Polarizing Pegs Available
- Slimmer Design Save on Board Space.
- Open Top Design for Cooler Running Chip Carrier.
- Automacit Insertion Machine Compatible.

ENVIRONMENTAL PERFORMANCE:

Thermal Shock: Per MIL-STD-1344, method 1003, condition A, Cycled from +55°C to +80°C, No discontinuity or Physical damage.
 Temperature/Humidity: Per MIL-STD-1344, method 1002, 85°C/85% relative humidity.

PART NO: 850-SMT-PLCC-(No. of Pins)-(NY or PPS)-T1-(N or P) ■ N: Without Pegs ■ P: With Polarizing Pegs.



No. of Contacts	P TYPE With Pegs.							Unit : mm	
	A±0.2	B±0.2	C±0.1	D±0.1	E±0.1	F±0.1	G±0.2	H±0.1	
20	15.65	15.65	5.08	5.08	10.03	10.03	12.70	6.35	
28	18.18	18.18	7.62	7.62	12.57	12.57	15.24	7.62	
32	18.18	20.75	7.62	10.16	12.57	15.11	17.78	7.62	
44	23.28	23.28	12.70	12.70	17.65	17.65	20.32	10.16	
52	25.84	25.84	15.24	15.24	20.19	20.19	22.86	11.43	
68	30.95	30.95	20.32	20.32	25.27	25.27	27.94	13.97	
84	36.00	36.00	25.40	25.40	30.35	30.35	33.02	16.15	

DCC. NO.
A4 DRAWING NO.

MATERIAL

DRAWN: Kiki Chen
VERIFY PEOPLE: Wendy Chen, Fanny Du

GOLDSUN ELECTRONICS CO., LTD.

JAMECO NO. **2005294** GOLDSUN NO. 850-52SMT
 Description: PLCC SURFACE MOUNT SOCKETS, 52 PINS Rev. 1
 UNIT: mm SCALE: SHEET 1 OF 1 CAS No: ERN No: