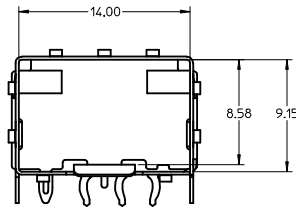
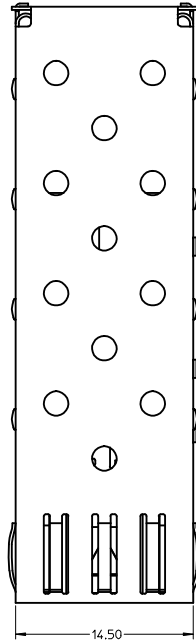
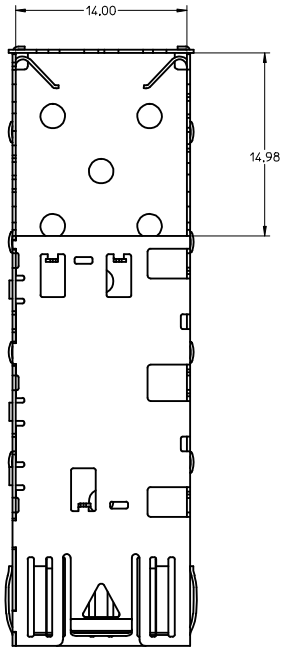
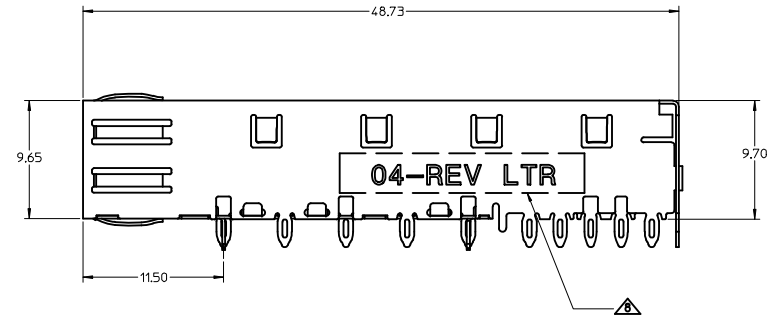
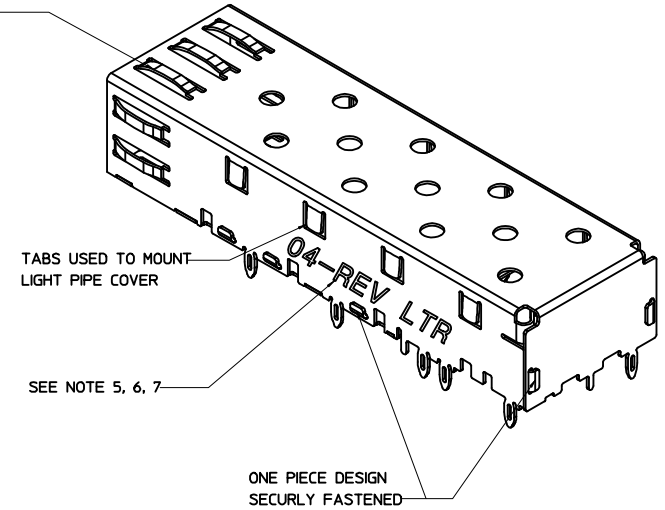


3D MODEL: EM-74737-004-ASSY



SPRING FINGER GASKET WITH TWO POINTS OF CONTACT. COMPLIES WITH (SFP) MSA BOARD AND BEZEL LOCATIONS.

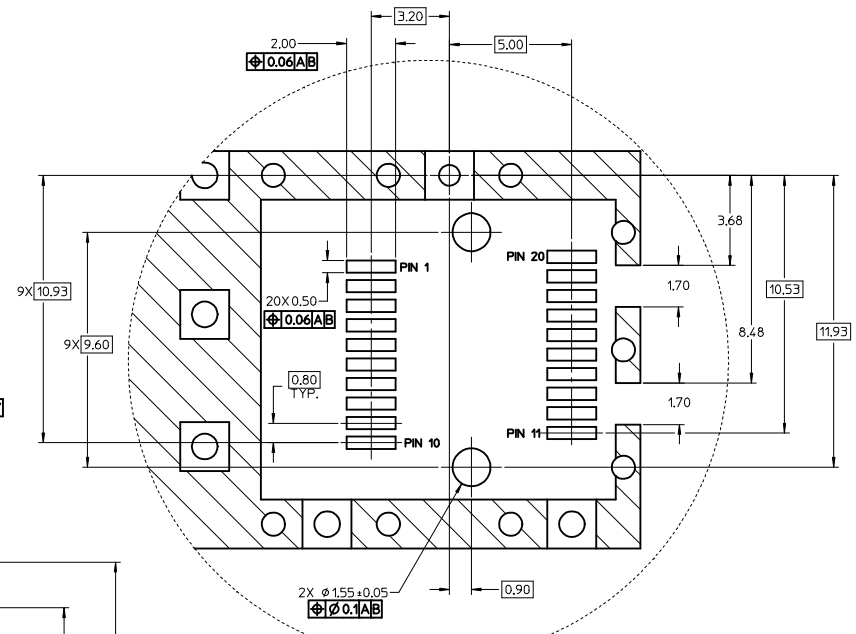
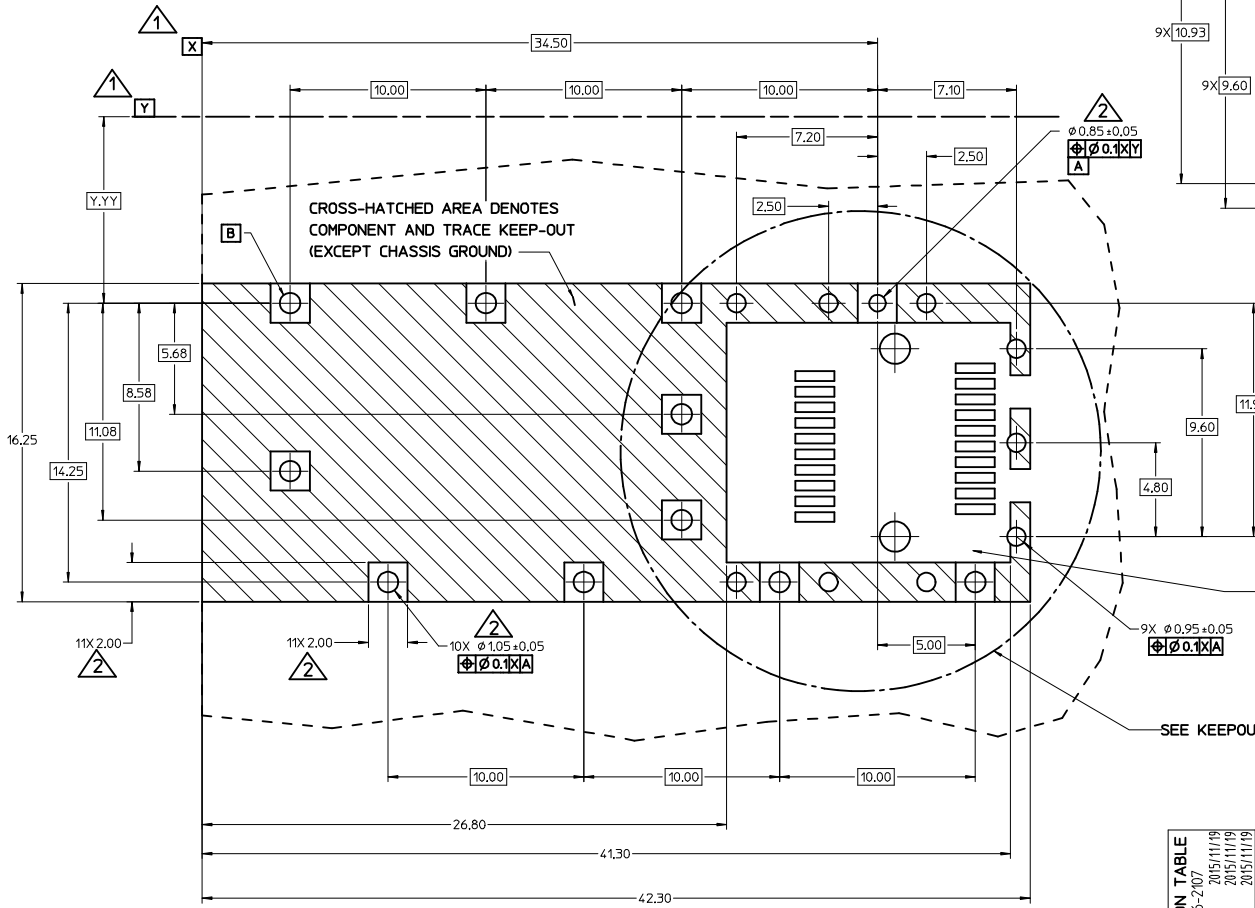


NOTES:

1. PRESS FIT LEGS, 2.28mm LONG.
1.57mm MINIMUM PCB THICKNESS.
 2. CAN BE USED WITH THE FOLLOWING LIGHT PIPE PART NUMBERS:
747260001 - LIGHT PIPE FROM BACK TO TOP
(REFER TO DOCUMENT SD-74726-001)
747260002 - LIGHT PIPE FROM SIDE TO TOP
(REFER TO DOCUMENT SD-74726-002)
 3. MATERIAL: COPPER ALLOY
PLATING: PRE-PLATED WITH NICKEL
 4. NO RoHS EXEMPTIONS.
 5. REVISION LETTER IS FOLLOWING MOLEX 3D MODEL.
 6. INSERT TO CAHANGE ENGRAVING FOR LAST TWO DIGITS OF PART NUMBER OR 3D MODEL.
 7. INSERT TO IDENTIFY ADDITIONAL TOOLING STARTING WITH TOOL #2 AS FOLLOWS:
LAST TWO DIGITS OF PART NUMBER, TOOL NUMBER AND REVISION LETTER.
(E.G., 02-3J)
- ⚠ DATE CODE STAMPED AREA FLATNESS 0.05mm MAX.

SEE REVISION TABLE IEC NO: CPG2016-2107 DRAWN BY: DRWENMANG07 CHECKED BY: CHYKORCHEN08 APPROVED BY: APPRCHEN08 DATE: 2015/11/19 DATE: 2015/11/19 DATE: 2015/11/19	QUALITY SYMBOLS	GENERAL TOLERANCES (UNLESS SPECIFIED)	DIMENSION STYLE	SCALE	DESIGN UNITS	THIRD ANGLE PROJECTION
	∇=0 ∇=0 ∇=0	mm INCH ANGULAR ± 1 ° DRAFT WHERE APPLICABLE MUST REMAIN WITHIN DIMENSIONS	MM ONLY DATE DATE DATE	5:1	METRIC	SFP ONE PIECE CAGE 0.090" PRESS FIT LEGS BLY-BLY ASSEMBLY molex
	4 PLACES ± --- 3 PLACES ± --- 2 PLACES ± 0.13 1 PLACE ± 0.25 0 PLACE ±	DRAWN BY: CCOX CHECKED BY: RMAHMOOD APPROVED BY: RMAHMOOD DATE: 2006/11/30 DATE: 2006/11/30 DATE:	MATERIAL NO. 747370004	DOCUMENT NO. SD-74737-004	SHEET NO. 1 OF 4	
	SIZE D	THIS DRAWING CONTAINS INFORMATION THAT IS PROPRIETARY TO MOLEX INCORPORATED AND SHOULD NOT BE USED WITHOUT WRITTEN PERMISSION				

- ▲ DATUM AND BASIC DIMENSIONS ESTABLISHED BY CUSTOMER.
- ▲ PADS AND VIAS ARE CHASSIS GROUND.
- 3 HOLE LAYOUT SHOWN IS FOR SINGLE SIDED MOUNTING ONLY.
- 4. CONNECTOR PAD LAYOUT PER SFP MSA, WILL ACCOMODATE MOLEX CONNECTOR SERIES 74441 OR EQUIVALENT.



KEEP-OUT Detail
SCALE 10:1

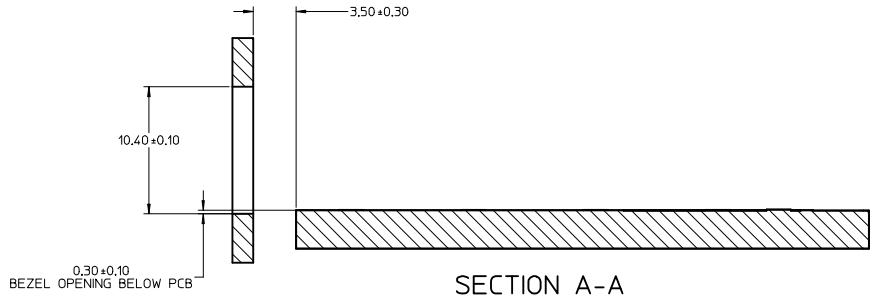
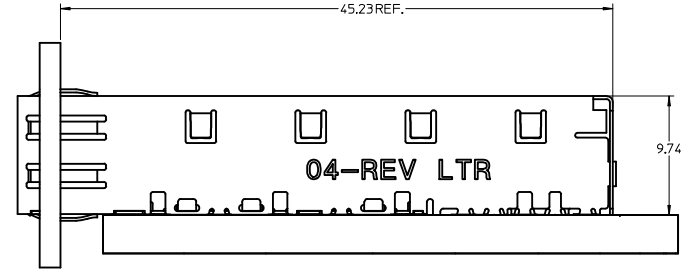
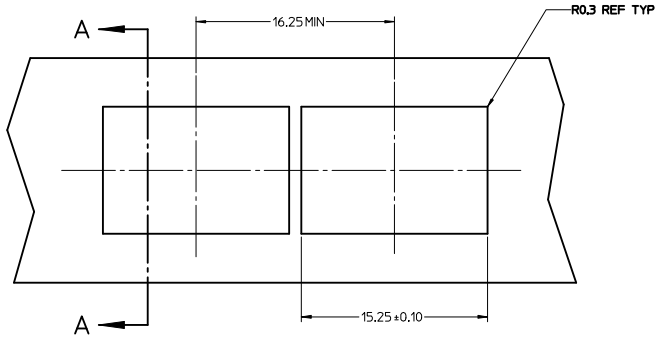
THIS AREA DENOTES
COMPONENT KEEP-OUT
(TRACES ALLOWED)

SEE KEEPOUT Detail

SEE REVISION TABLE IEC NO: CPG2016-2107 DRAWN BY: J CHECKED BY: J APPR: RCHEN08 DATE: 2015/11/19 DATE: 2015/11/19 DATE: 2015/11/19	QUALITY SYMBOLS	GENERAL TOLERANCES (UNLESS SPECIFIED)	DIMENSION STYLE	SCALE	DESIGN UNITS	THIRD ANGLE PROJECTION
	▽=0	mm	MM ONLY	8:1	METRIC	☉
	▽=0	INCH				
	▽=0					
	4 PLACES ±	ANGULAR ± 1 °	DRAWN BY: CCOX	DATE: 2006/11/30	TITLE: SFP ONE PIECE CAGE 0.090" PRESS FIT LEGS BLY-BLY ASSEMBLY	
	3 PLACES ±	DRAFT WHERE APPLICABLE MUST REMAIN WITHIN DIMENSIONS	CHECKED BY: RMAHMOOD	DATE: 2006/11/30	molex	
	2 PLACES ± 0.13		APPROVED BY: RMAHMOOD	DATE:	DOCUMENT NO. SD-74737-004	
	1 PLACE ± 0.25		MATERIAL NO. 747370004		SHEET NO. 2 OF 4	
	0 PLACE ±		SIZE D	THIS DRAWING CONTAINS INFORMATION THAT IS PROPRIETARY TO MOLEX INCORPORATED AND SHOULD NOT BE USED WITHOUT WRITTEN PERMISSION		

20 19 18 17 16 15 14 13 12 11 10 9 8 7 6 5 4 3 2 1

H
L
K
J
I
H
G
F
E
D
C
B
A



SEE REVISION TABLE EC NO: CPG2016-2107 J DRAWN/MAN/07 2015/11/19 CHK/DR/CHK/08 2015/11/19 APPR/RCR/CHK/08 2015/11/19 REV DESCRIPTION	QUALITY SYMBOLS	GENERAL TOLERANCES (UNLESS SPECIFIED)	DIMENSION STYLE	SCALE	DESIGN UNITS	THIRD ANGLE PROJECTION
	▽=0	4 PLACES ± mm ± INCH	MM ONLY	5:1	METRIC	☉
	▽=0	3 PLACES ± 0.13				
	▽=0	1 PLACE ± 0.25				
		ANGULAR ± 1 °				
		DRAFT WHERE APPLICABLE MUST REMAIN WITHIN DIMENSIONS				
			MATERIAL NO.	DOCUMENT NO.		
			747370004	SD-74737-004		
						SHEET NO. 3 OF 4

TITLE
SFP ONE PIECE CAGE
0.090" PRESS FIT LEGS
BLY-BLY ASSEMBLY

molex

19 18 17 16 15 14 13 12 11 10 9 8 7 6 5 4 3 2 1

DATE	REV	REVISION TABLE
2007/01/17	A	INITIAL RELEASE
2007/01/24	B	UPDATED VIEWS
2007/02/08	C	ADDED NOTE 5
2007/03/06	D	ADDED SHEETS 2 AND 3
2007/01/23	E	UPDATED 2D VIEWS TO REFLECT CHG'S MADE TO EM-74737-004 REV E.
2007/04/25	F	[1] ADDED REV SHEET, [2] UPDATED REV SHEET NOTES A-E, [3] UPDATED DRAWING TO REFLECT CHG'S MADE TO EM-74737-004-ASSY REV D, [4] DELETED NOTE 2 ON SHT1 AND SHIFTED NUMBERS, [5] ON SHT1 ROTATED BTM_VIEW 180 DEGREES.
2007/11/27	G	[1] UPDATED VIEWS TO MATCH EM-74737-004-ASSY REV E.
2014/12/02	H	1. ADDED *MM 3D MODEL: EM-74737-004-ASSY* ON LEFT TOP CORNER. [SHEET 1] 2. ADDED NOTE 5, 6, 7. [SHEET 1] 3. CHANGED NOTE 4 TO 'NO RoHS EXEMPTIONS'. [SHEET 1] 4. REMOVED ALL INCH UNIT. [SHEET 1~3]
2015/11/19	J	SHEET 1: A19 & E5: ADDED NOTE 8. "DATE CODE STAMPED AREA FLATNESS 0.05mm MAX." SHEET 3: G16: ADDED DIM R0.3 REF TYP.

SEE REVISION TABLE IEC NO: CPG2016-2107 J DRAWN BY: CHYKORCHENOS 2015/11/19 APPROVED BY: CHYKORCHENOS 2015/11/19	QUALITY SYMBOLS	GENERAL TOLERANCES (UNLESS SPECIFIED)	DIMENSION STYLE	SCALE	DESIGN UNITS	THIRD ANGLE PROJECTION
	▽=0	4 PLACES ±	MM ONLY	1:1	METRIC	☉
	▽=0	3 PLACES ±	mm INCH	DRAWN BY: CCOX DATE: 2006/11/30	CHECKED BY: RMAHMOOD DATE: 2006/11/30	TITLE: SFP ONE PIECE CAGE 0.090" PRESS FIT LEGS BLY-BLY ASSEMBLY
	▽=0	2 PLACES ±0.13	ANGULAR ± 1 °	APPROVED BY: RMAHMOOD DATE:	MATERIAL NO: 747370004	DOCUMENT NO: SD-74737-004
	1 PLACE ±0.25	DRAFT WHERE APPLICABLE MUST REMAIN WITHIN DIMENSIONS	SIZE: D	THIS DRAWING CONTAINS INFORMATION THAT IS PROPRIETARY TO MOLEX INCORPORATED AND SHOULD NOT BE USED WITHOUT WRITTEN PERMISSION		
	0 PLACE ±					