



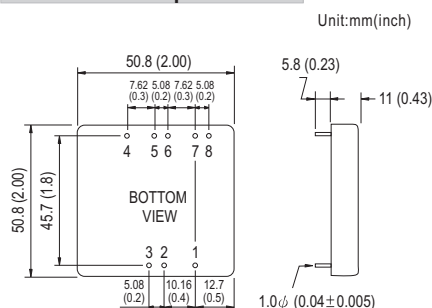
- Features :
  - 2"x2" compact size
  - 2:1 wide input range
  - High efficiency up to 93%
  - 1500VDC I/O isolation
  - Built-in remote ON / OFF control
  - Built-in remote sense
  - Trimming output  $\pm 10\%$
  - Comply with CE / FCC without external components
  - Protections: Short circuit / Overload / Input and output Over voltage
  - Cooling by free air convection
  - Six-sided shield metal case
  - 100% burn-in test
  - Low cost / High reliability
  - Output 3.3V available
  - 2 years warranty



**SPECIFICATION**

ORDER NO.	SKA60A-05	SKA60B-05	SKA60C-05	SKA60A-12	SKA60B-12	SKA60C-12	SKA60A-15	SKA60B-15	SKA60C-15			
<b>OUTPUT</b>	<b>DC VOLTAGE</b>			5V			12V			15V		
	<b>CURRENT RANGE</b>			1.2 ~ 12A			0.5 ~ 5A			0.4 ~ 4A		
	<b>RATED POWER</b>			60W								
	<b>RIPPLE &amp; NOISE (max.)</b> Note.2			60mVp-p			80mVp-p			100mVp-p		
	<b>LINE REGULATION</b> Note.3			$\pm 0.5\%$								
	<b>LOAD REGULATION</b> Note.4			$\pm 0.5\%$								
	<b>VOLTAGE ACCURACY</b>			$\pm 2.0\%$								
	<b>SWITCHING FREQUENCY</b>			250KHz min.								
	<b>EXTERNAL CAPACITANCE LOAD (max.)</b>			1000uF			220uF			100uF		
<b>EXTERNAL TRIM Adj. RANGE(Typ.)</b>			$\pm 10\%$									
<b>INPUT</b>	<b>VOLTAGE RANGE</b>			A: 9 ~ 18VDC B: 18 ~ 36VDC C: 36 ~ 75VDC								
	<b>EFFICIENCY (Typ.)</b>			91%	90.5%	92%	92%	92.5%	92%	92%	93%	92.5%
	<b>DC CURRENT</b>		Full load	5505mA	2775mA	1370mA	5445mA	2715mA	1370mA	5400mA	2690mA	1370mA
			No load	185mA	120mA	60mA	160mA	120mA	60mA	160mA	120mA	85mA
	<b>FILTER</b>			Pi network								
	<b>REMOTE CONTROL</b>			Power ON : R.C ~ -Vin > 2.5VDC or open circuit ; Power OFF : R.C ~ -Vin < 0.5VDC or short								
<b>PROTECTION</b>			Fuse recommended									
<b>PROTECTION (Note. 5)</b>	<b>OVER CURRENT</b>			110% ~ 160% rated output power								
				Protection type : Hiccup mode, recovers automatically after fault condition is removed								
	<b>SHORT CIRCUIT</b>			All output equipped with short circuit								
			Protection type : Hiccup mode, recovers automatically after fault condition is removed									
<b>OVER VOLTAGE</b>		Input(Typ.)	A: >20 ~ 25VDC B: >40 ~ 50VDC C: >80 ~ 100VDC input voltage			Protection type : Shut down o/p voltage, recovers automatically after fault condition is removed						
		Output(Typ.)	5Vo : 7V ~ 8.95V ; 12Vo : 15V ~ 19.2V ; 15Vo : 18V ~ 23.3V			Protection type : Clamp by TVS diode						
<b>ENVIRONMENT</b>	<b>WORKING TEMP.</b>			-40 ~ +70°C (Refer to "Derating Curve")								
	<b>CASE TEMP.</b>			+100°C max.								
	<b>WORKING HUMIDITY</b>			20% ~ 90% RH non-condensing								
	<b>STORAGE TEMP., HUMIDITY</b>			-55 ~ +105°C, 10 ~ 95% RH								
	<b>TEMP. COEFFICIENT</b>			$\pm 0.03\% / ^\circ\text{C}$ (0 ~ 50°C)								
<b>VIBRATION</b>			10 ~ 500Hz, 2G 10min./1cycle, period for 60min. each along X, Y, Z axes									
<b>SAFETY &amp; EMC</b>	<b>WITHSTAND VOLTAGE</b>			I/P-O/P:1.5KVDC								
	<b>ISOLATION RESISTANCE</b>			I/P-O/P: 100M Ohms / 500VDC / 25°C / 70% RH								
	<b>EMC EMISSION</b>			Compliance to EN55022 Class A, FCC part 15 Class A without external components								
<b>EMC IMMUNITY</b>			Compliance to EN61000-4-2,3,4,5,6,8, light industry level, criteria A									
<b>OTHERS</b>	<b>DIMENSION</b>			50.8*50.8*11.0 mm or 2**2**0.43" inch (L*W*H)								
	<b>WEIGHT</b>			67g								

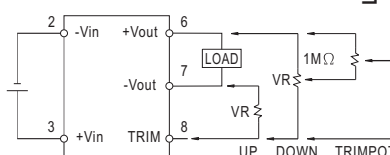
■ Mechanical Specification



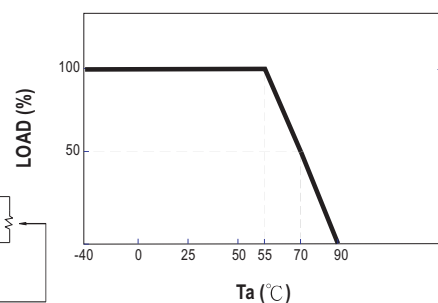
■ Pin Configuration

Pin No.	Output	Pin No.	Output
1	R.C	5	+R.S
2	-Vin	6	+Vout
3	+Vin	7	-Vout
4	-R.S	8	TRIM

■ External Output Trimming



■ Derating Curve



**NOTE**

- 1.All parameters are specified at normal input, rated load, 25°C, 70% RH ambient.
- 2.Ripple & noise are measured at 20MHz by using a 12" twisted pair terminated with a 0.1uf & 47uf capacitor.
- 3.Line regulation is measured from low line to high line at rated load.
- 4.Load regulation is measured from 10% to 100% rated load.
- 5.Please prevent the converter from operating in overload or short circuit condition for more than 30 seconds.