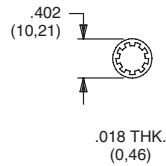


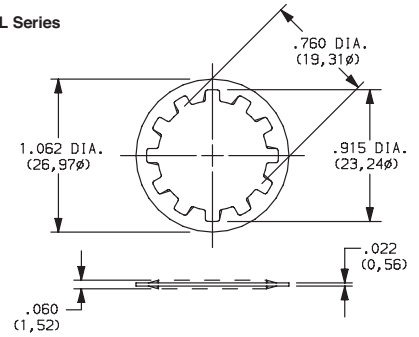
LOCKWASHERS

Toggles: 7000, 9000, E & T Series
 Pushbuttons: 8020, 8060, 8500, E010 & TP Series
 Fits 1/4-40 Bushing



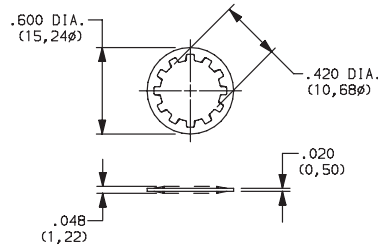
PART NO.
700303202 NICKEL PLATED
700303A56 BLACK

Switchlocks: A, BY, H, W, Y & YL Series
 Fits 3/4 Dia. Bushing



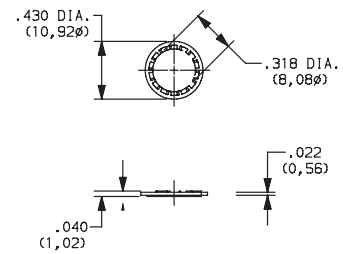
PART NO.
175050200 ZINC PLATED

Rotary: A & RTA Series
 Fits 3/8 Dia. Thread
 M10 X .75 metric



PART NO.
472800202
 NICKEL PLATED

Pushbutton: 8700 Series
 Rotary: F Series
 Fits 5/16 Dia. Thread



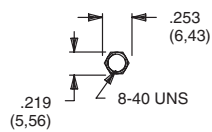
PART NO.
135A00000
 ZIINC PLATED

MATERIAL

Steel, nickel plated standard. Other finishes available, consult Customer Service Center.

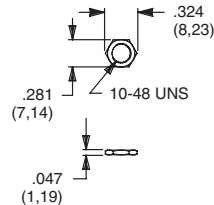
MOUNTING NUTS

Pushbuttons: 8600 Series



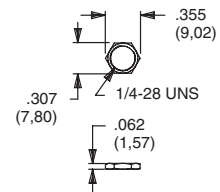
PART NO.
775200201 NICKEL PLATED
775200A56 BLACK

Toggles: T Series
 Pushbuttons: TP Series



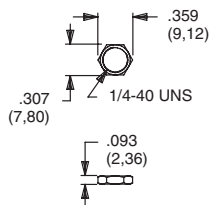
PART NO.
464900201 NICKEL PLATED
464900A56 BLACK

Rotary: M Series



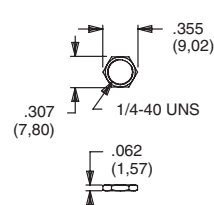
PART NO.
477100201 NICKEL PLATED

Toggles: E Series
 Pushbuttons: E010 Series



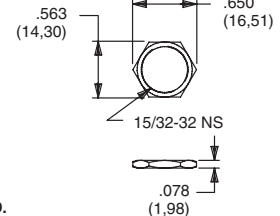
PART NO.
540400201 NICKEL PLATED
540400A56 BLACK

Toggles: 7000, 9000 & T Series
 Pushbuttons: 8020, 8060, 8500 & TP Series



PART NO.
700201201 NICKEL PLATED
700201A56 BLACK

Toggles: 7000 & 9000 Series
 Pushbuttons: 8500 Series



PART NO.
707100201 NICKEL PLATED
707100215 SATIN CHROME
707100A56 BLACK

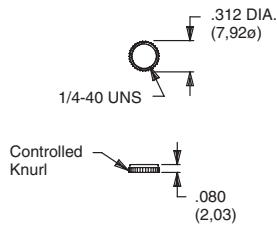
MATERIAL

Brass, nickel plated standard. Other finishes available, consult Customer Service Center.



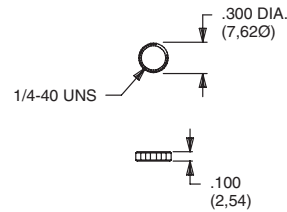
KNURLED NUTS

Toggles: 7000, 9000 & T Series
Pushbuttons: 8020, 8060, 8500 & TP Series



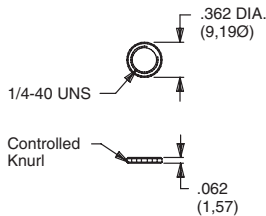
PART NO.
778000201 NICKEL PLATED
778000A56 BLACK

Toggles: 7000, 9000, E & T Series
Pushbuttons: 8020, 8060, 8500, E010 & TP Series



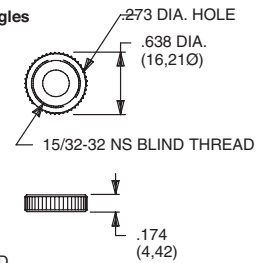
PART NO.
778600201 NICKEL PLATED
778600A56 BLACK

Toggles: 7000, 9000 & T Series
Pushbuttons: 8020, 8060, 8500 & TP Series
Fits Gulmite #12 Socket & Wrench 8942-02-201



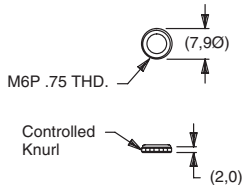
PART NO.
796901201 NICKEL PLATED
796901A56 BLACK

Toggles: 7000 & 9000 Series
Pushbuttons: 8500 Series
Will not fit T, T1, TP & T1P Toggles



PART NO.
471300201 NICKEL PLATED
471300A56 BLACK

Toggles: 7000 Series
Pushbuttons: 8020 & 8060 Series



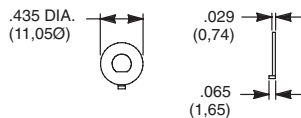
PART NO.
483200201 NICKEL PLATED

MATERIAL

Brass, nickel plated standard. Other finishes available, consult Customer Service center.

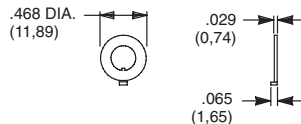
LOCKING RINGS

Toggles: T Series
Pushbuttons: TP Series
Fits 10-48 Bushing



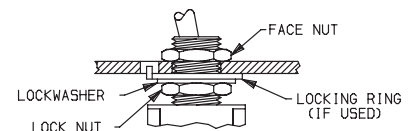
PART NO.
465000201 NICKEL PLATED WITH FLAT

Toggles: 7000, 9000 & T Series
Pushbuttons: 8020, 8060, 8500 & TP Series
Rotary: M Series
Fits 1/4-40 Bushing



PART NO.
700701201 NICKEL PLATED WITH KEYWAY
700701A56 BLACK WITH KEYWAY

PANEL MOUNT ASSEMBLY



TYPICAL ASSEMBLY WITH LOCKING RING

NOTE: We recommend that locknut always be used with non-flanged bushings.

CAUTION: To avoid damaging panel front, always tighten locknut at back of panel. Overtightening mounting nut may cause K2-K12 actuators to bind.

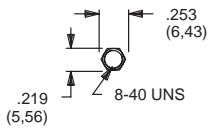
MATERIAL

Brass, nickel plated standard. Other finishes available, consult Customer Service Center.



NUTS (MOUNTING)

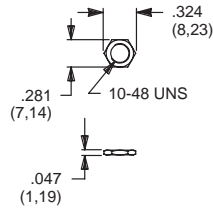
8600 SERIES



PART NO.

775200201 NICKEL PLATED
775200264 BLACK

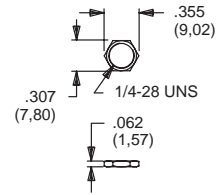
T & TP SERIES



PART NO.

464900201 NICKEL PLATED
464900264 BLACK

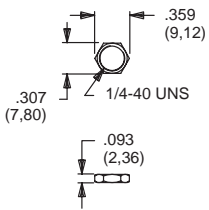
M SERIES



PART NO.

477100201 NICKEL PLATED

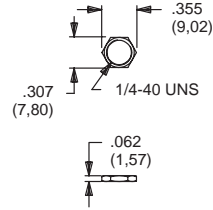
E & E010 SERIES



PART NO.

540400201 NICKEL PLATED
540400264 BLACK

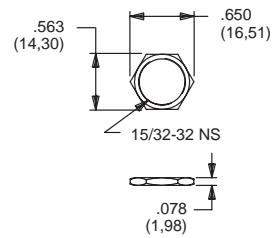
7000, 8020, 8060, 8500, 9000, T & TP SERIES



PART NO.

700201201 NICKEL PLATED
700201264 BLACK

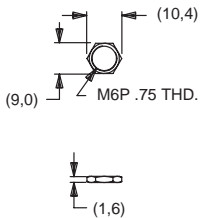
7000, 8500 & 9000 SERIES



PART NO.

707100201 NICKEL PLATED
707100215 SATIN CHROME
707100264 BLACK

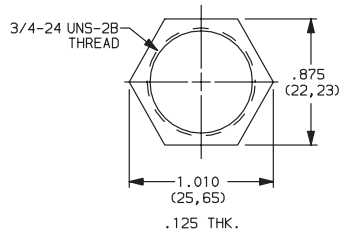
7000, 8020 & 8060 SERIES



PART NO.

791600201 NICKEL PLATED
791600264 BLACK

A, BY, GY, H, P, W, Y & YL SERIES

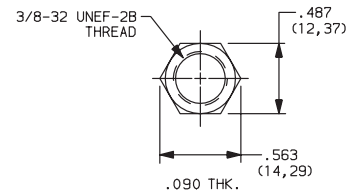


PART NO.

175050700

MATERIAL
 Steel; Finish: Zinc plate

A SERIES

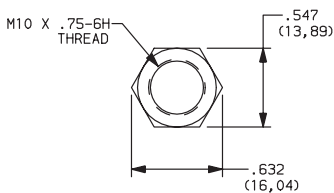


PART NO.

472706201

MATERIAL
 Zinc; Finish: Nickel plate

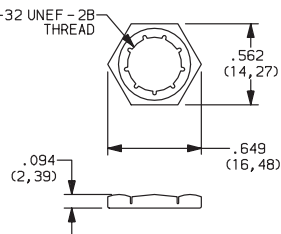
A SERIES



PART NO.

495100201

H & R SERIES

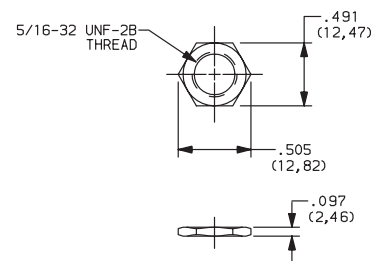


PART NO.

175000100

MATERIAL
 Brass; Finish: Zinc electro & clear bright chromate

F SERIES



PART NO.

175020201

MATERIAL

Brass, nickel plated standard. Other finishes available, consult Customer Service Center.