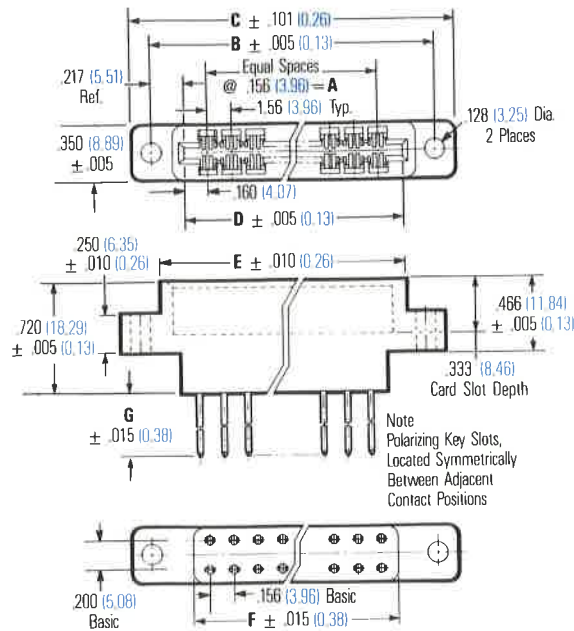


Edge Connector High Reliability

.156" (3.96mm) Density Wire Wrap

Standard Wire Wrap



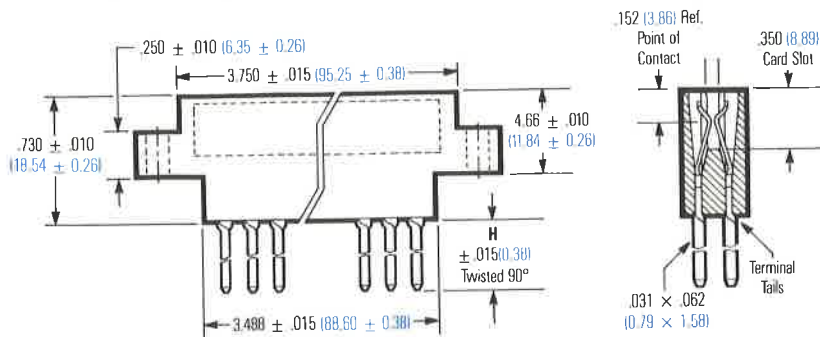
Dimensions

No. of Pos./Cont.	A		B		C		D		E		F	
	in	mm	in	mm	in	mm	in	mm	in	mm	in	mm
10/20	1.404	35.66	2.158	54.81	2.408	61.16	1.724	43.79	1.878	47.70	1.616	41.05
15/30	2.184	55.47	2.938	74.63	3.188	80.98	2.504	63.60	2.658	67.51	2.396	60.86
18/32	2.652	67.36	3.406	86.51	3.656	92.86	2.972	75.49	3.126	79.40	2.864	72.75
22/44	3.276	83.21	4.030	102.36	4.280	108.71	3.596	91.34	3.750	95.25	3.488	88.60
25/50	3.744	95.10	4.498	114.25	4.748	120.60	4.064	103.23	4.218	107.14	3.956	100.48
30/60	4.524	114.91	5.278	134.06	5.528	140.41	4.844	123.04	4.988	126.70	4.736	120.29

Ordering Information

No. of Pos./Cont.	G Tail Length		Part No.
	in	mm	
10/20	.550	13.97	50-20E-10-1
10/20	.755	19.18	50-20F-10-1
10/20	1.051	26.69	50-20G-10-1
15/30	.550	13.97	50-30E-10-1
15/30	.755	19.18	50-30F-10-1
15/30	1.051	26.69	50-30G-10-1
18/36	.550	13.97	50-36E-10-1
18/36	.755	19.18	50-36F-10-1
18/36	1.051	26.69	50-36G-10-1
22/44	.550	13.97	50-44E-10-1
22/44	.755	19.18	50-44F-10-1
22/44	1.051	26.69	50-44G-10-1
25/50	.550	13.97	50-50E-10-1
25/50	.755	19.18	50-50F-10-1
25/50	1.051	26.69	50-50G-10-1
30/60	.550	13.97	50-60E-10-1
30/60	.755	19.18	50-60F-10-1
30/60	1.051	26.69	50-60G-10-1

Wire Wrap With Twisted Tails



No. of Pos./Cont.	H Twisted Tail Length		Part No.
	in	mm	
22/44	.550	13.97	50-44E-10
22/44	.755	19.18	50-44F-10
22/44	1.051	26.69	50-44G-10