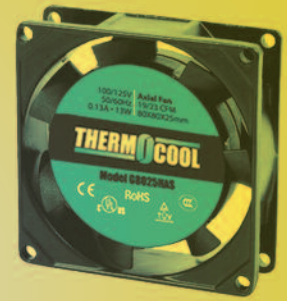


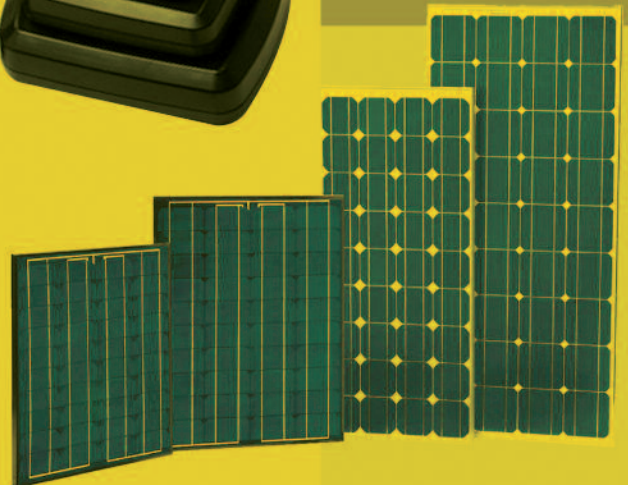
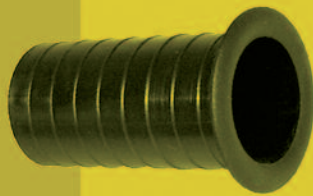
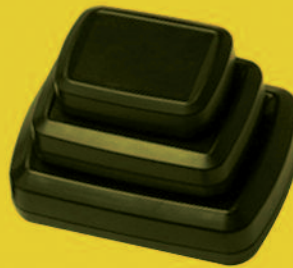
CATALOG 7



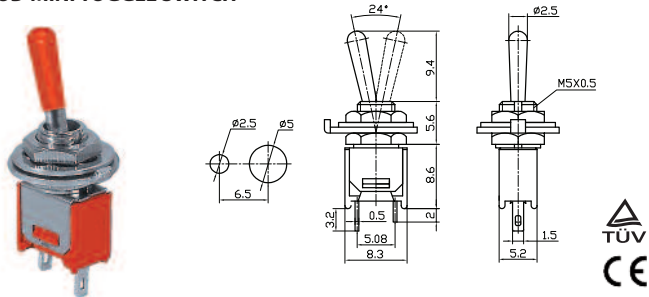
COAST  
ELECTRONICS  
SUPPLY



# PRODUCT CATALOG

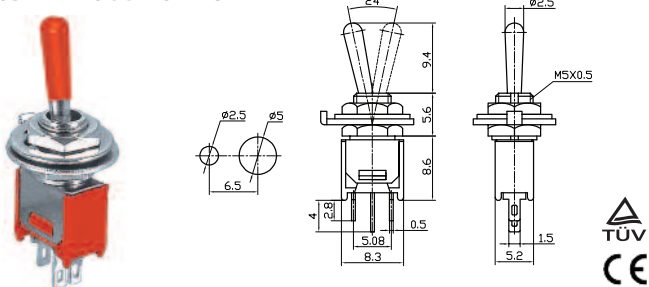


SUB-MINI TOGGLE SWITCH



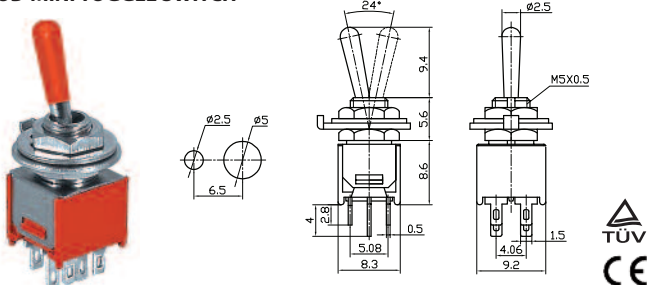
PART #	DESCRIPTION	RATING A	RATING B
66-1001	ON-OFF/SPST 2P	3 AMPS/125 VAC	1.0 AMPS/250 VAC

SUB-MINI TOGGLE SWITCH



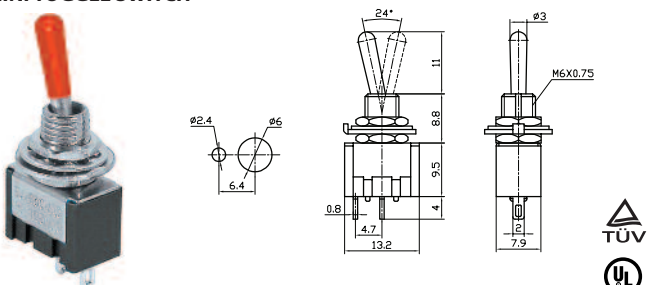
PART #	DESCRIPTION	RATING A	RATING B
66-1002	ON-ON/SPDT 3P	3 AMPS/125 VAC	1.0 AMPS/250 VAC
66-1003	ON-OFF-ON/SPDT 3P	3 AMPS/125 VAC	1.0 AMPS/250 VAC

SUB-MINI TOGGLE SWITCH



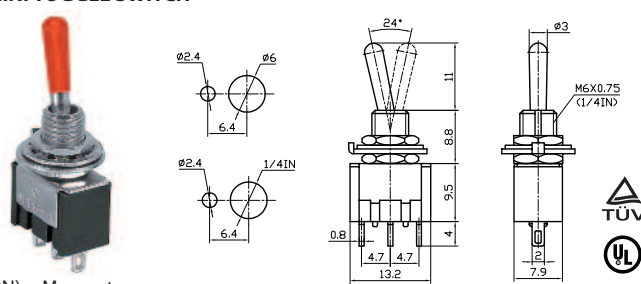
PART #	DESCRIPTION	RATING A	RATING B
66-1005	ON-ON/DPDT 6P	3 AMPS/125 VAC	1.0 AMPS/250 VAC
66-1006	ON-OFF-ON/DPDT 6P	3 AMPS/125 VAC	1.0 AMPS/250 VAC

MINI TOGGLE SWITCH



PART #	DESCRIPTION	RATING A	RATING B
66-1201	ON-OFF/SPST 2P	6 AMPS/125 VAC	3 AMPS/250 VAC

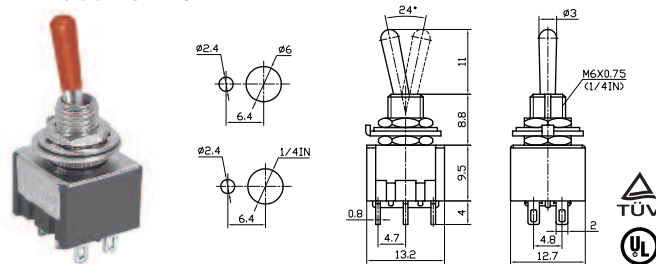
MINI TOGGLE SWITCH



(ON) = Momentary

PART #	DESCRIPTION	RATING A	RATING B
66-1202	ON-ON/SPDT 3P	6 AMPS/125 VAC	3 AMPS/250 VAC
66-1203	ON-OFF-ON/SPDT 3P	6 AMPS/125 VAC	3 AMPS/250 VAC
66-1250	(ON)-OFF-(ON)/SPDT 3P	6 AMPS/125 VAC	3 AMPS/250 VAC

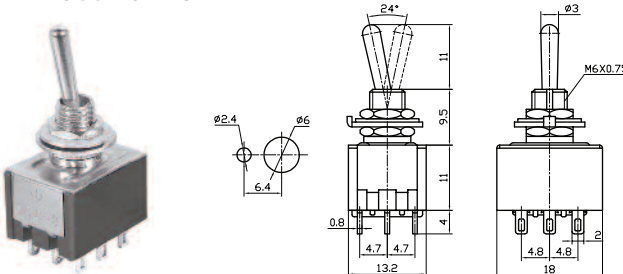
MINI TOGGLE SWITCH



(ON) = Momentary

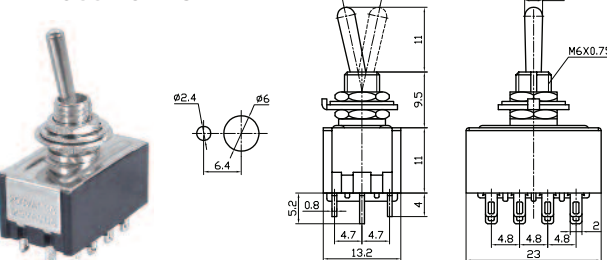
PART #	DESCRIPTION	RATING A	RATING B
66-1205	ON-ON/DPDT 6P	6 AMPS/125 VAC	3 AMPS/250 VAC
66-1206	ON-OFF-ON/DPDT 6P	6 AMPS/125 VAC	3 AMPS/250 VAC
66-1251	(ON)-OFF-(ON)/DPDT 6P	6 AMPS/125 VAC	3 AMPS/250 VAC
66-1255	ON-OFF-(ON)/DPDT 6P	6 AMPS/125 VAC	3 AMPS/250 VAC

MINI TOGGLE SWITCH



PART #	DESCRIPTION	RATING A	RATING B
66-1210	ON-ON/3PDT 9P	6 AMPS/125 VAC	3 AMPS/250 VAC
66-1215	ON-OFF-ON/3PDT 9P	6 AMPS/125 VAC	3 AMPS/250 VAC

MINI TOGGLE SWITCH



PART #	DESCRIPTION	RATING A	RATING B
66-1220	ON-ON/4PDT 12P	6 AMPS/125 VAC	3 AMPS/250 VAC