

Distributed by:

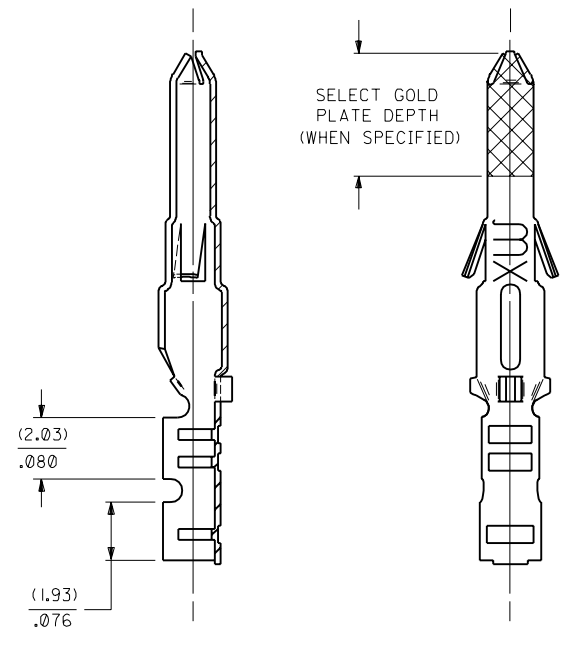
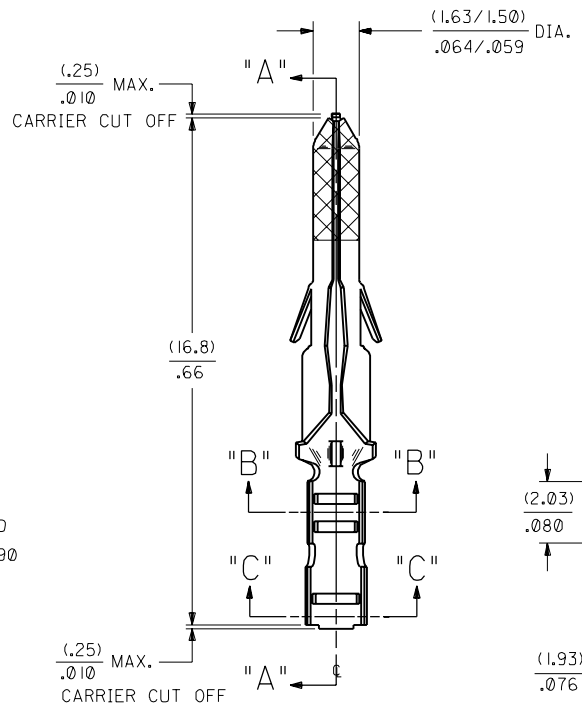
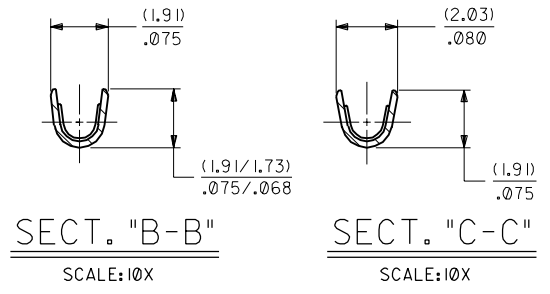
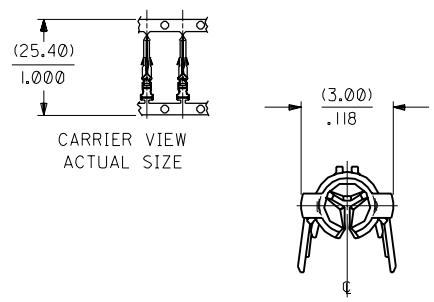
JAMECO[®]
ELECTRONICS

www.Jameco.com ♦ 1-800-831-4242

The content and copyrights of the attached
material are the property of its owner.

Jameco Part Number 224581 (02-06-2132C)

PART NO.	ENG. NO.	
02-06-2131	1854-(90)I	
02-06-2132	1854-(90)IL	
02-06-2134	1854-(90)II	OBSELETE
02-06-6137	1854-(59)I	
02-06-6136	1854-(59)IL	
02-06-6138	1854-(56)I	
02-06-6139	1854-(56)IL	
02-06-6130	1854-(550)	
02-06-6135	1854-(550)L	
02-06-6143	1854-(603)	
02-06-6144	1854-(603)L	
02-06-6145	1854-(603)I	OBSELETE



SECT. "A-A"

LEGEND

1854-(****)*

- P=PREPLATE
- BLANK=POSTPLATE
- FINISH CODE
- FORM BLANK=CHAIN
- I=CHAIN WITH INTERLEAF PAPER ON REEL.
- L=LOOSE

- NOTES:
1. TERMINAL FOR USE WITH (1.57)/.062 DIA. SERIES HOUSINGS AND WILL ACCEPT 24 THRU 30 AWG WIRE WITH (1.02/2.29)/.040/.090 INSULATION DIA.
 2. THIS PART CONFORMS TO PRODUCT SPEC. 02-06.

FINISH CODES:

- 901 HOT TIN DIP (.00005)/.000020 MIN.
- 603 SELECT GOLD PLATE (.00076)/.000030 MIN. IN CONTACT AREA, SELECT TIN-LEAD (.00254)/.000100 MIN. IN CRIMP AREA OVER (.00127)/.000050 MIN. NICKEL OVERALL WITH (.00025)/.000010 MAX. GOLD FLASH OVERALL.
- 561 SELECT GOLD PLATE (.00076)/.000030 MIN. IN CONTACT AREA, OVER (.00127)/.000050 MIN. NICKEL OVERALL.
- 591 SELECT GOLD PLATE (.00127)/.000050 MIN. IN CONTACT AREA, OVER (.00127)/.000050 MIN. NICKEL OVERALL WITH (.00025)/.000010 MAX. GOLD FLASH OVERALL.
- 550 SELECT GOLD PLATE (.00038)/.000015 MIN. IN CONTACT AREA, OVER (.00076)/.000030 MIN. NICKEL OVERALL WITH (.00025)/.000010 MAX. GOLD FLASH OVERALL.

MATERIAL NOTE:
CARTRIDGE BRASS, ALLOY *C26000,
(.20)/.008 THICK, EXTRA SPRING TEMPER

REV.	DESCRIPTION
AN	OBSELETE P/N UCR2002-0270 COMERCIAL 01/9/27
AM2	OBSELETE -1575) & -1575) ILCR U6 0358 GC 9/15/95 RW
AM1	ADD -1603) PER ECR #30605 11-5-90 RW
AM	REV. & REDRAWN PER ECR 10312 GEP 9-21-87 RW

DIMENSIONS SHOWN (METRIC) INCH UNLESS OTHERWISE SPECIFIED TOLERANCES: ANGULAR ± 1/2°		REVISIONS																									
<table border="1"> <thead> <tr> <th>PLACE</th> <th>TOLERANCE</th> <th>INCH</th> <th>METRIC</th> </tr> </thead> <tbody> <tr> <td>3 PLACE</td> <td>± .010</td> <td>---</td> <td>---</td> </tr> <tr> <td>2 PLACE</td> <td>± .014</td> <td>± 0.25</td> <td>---</td> </tr> <tr> <td>1 PLACE</td> <td>---</td> <td>± 0.35</td> <td>---</td> </tr> </tbody> </table>		PLACE	TOLERANCE	INCH	METRIC	3 PLACE	± .010	---	---	2 PLACE	± .014	± 0.25	---	1 PLACE	---	± 0.35	---	<table border="1"> <thead> <tr> <th>DATE</th> <th>REV.</th> <th>BY</th> <th>CHK'D.</th> </tr> </thead> <tbody> <tr> <td>9/21/87</td> <td>1 OF 1</td> <td>RW</td> <td>RW</td> </tr> </tbody> </table>		DATE	REV.	BY	CHK'D.	9/21/87	1 OF 1	RW	RW
PLACE	TOLERANCE	INCH	METRIC																								
3 PLACE	± .010	---	---																								
2 PLACE	± .014	± 0.25	---																								
1 PLACE	---	± 0.35	---																								
DATE	REV.	BY	CHK'D.																								
9/21/87	1 OF 1	RW	RW																								
DRAFT WHERE APPLICABLE MUST REMAIN WITHIN DIMENSIONS FILE NAME: SD1854X1.DWG APP'D. BY: RAS SCALE: 8 : 1		TITLE: CRIMP TERMINAL, MALE (1.57)/.062 DIA., BRASS FOR 24 THRU 30 GA. WIRE MFG. SH. REV. LTR. REVISIONS MOLEX INCORPORATED U.S.A. SHEET NO. 1 OF 1 DATE 9/21/87 PART NO. 1854-1 DRWG. NO. SD-1854-1 SEE CHART THIS DRAWING CONTAINS INFORMATION THAT IS PROPRIETARY TO MOLEX INC. AND SHOULD NOT BE USED WITHOUT WRITTEN PERMISSION.																									