

# Open Frame

## 8.0" Open Frame LCD Monitor

### Model Number: OF-8.0-VGA

The OF-8.0-VGA "all-in-one" open frame LCD monitor makes integration into your new or existing application easy. The unit comes completely assembled with a color TFT LCD, controller board (VGA Only), on system display button board, backlight driver board, all the necessary cables, integrated with a sheet metal bracket and ready for installation.

Commercial and industrial applications include: ATM machines, industrial equipment, instrumentation, kiosks, military, medical, arcade games, marine, security, test equipment, gaming, or any application requiring a color LCD display.

#### Features:

- 8.0" SVGA LCD panel with LED backlight
- VGA only input controller card
- Commercial and industrial applications
- -20°C ~ +70°C operating temperature range
- High contrast ratio: 500:1 typical
- 250 cd/m2 brightness typical
- 20,000 hours LED life typical
- OSD controls: contrast, phase, clock, color, H&V position, auto-tune, recall
- +12 volt power

#### Options:

- AC/DC 12V power adapter, universal 100-240 Volts (sold separately)
- Combo USB or RS232 four wire resistive touchscreen (sold separately)



#### Product Specifications:

Screen Size (Diagonal): 8.0 Inches

Display Technology: TFT

Resolution: 800 x 600 (SVGA)

Brightness: 250 Nits

Interface Input Modes: VGA

Colors: 262,144

Active Area: 162.0 (W) x 121.5 (H) mm

Contrast Ratio: 500:1

Horizontal Viewing Angle: 70° L/R

Vertical Viewing Angle: 50° (top) 70° (bottom)

Operating Temperature: -20°C to 70°C

Storage Temperature: -30°C to 80°C

Input Voltage: +12V DC

Power Consumption: 400 mA

Display Backlight: LED

RoHS Compliant: Yes

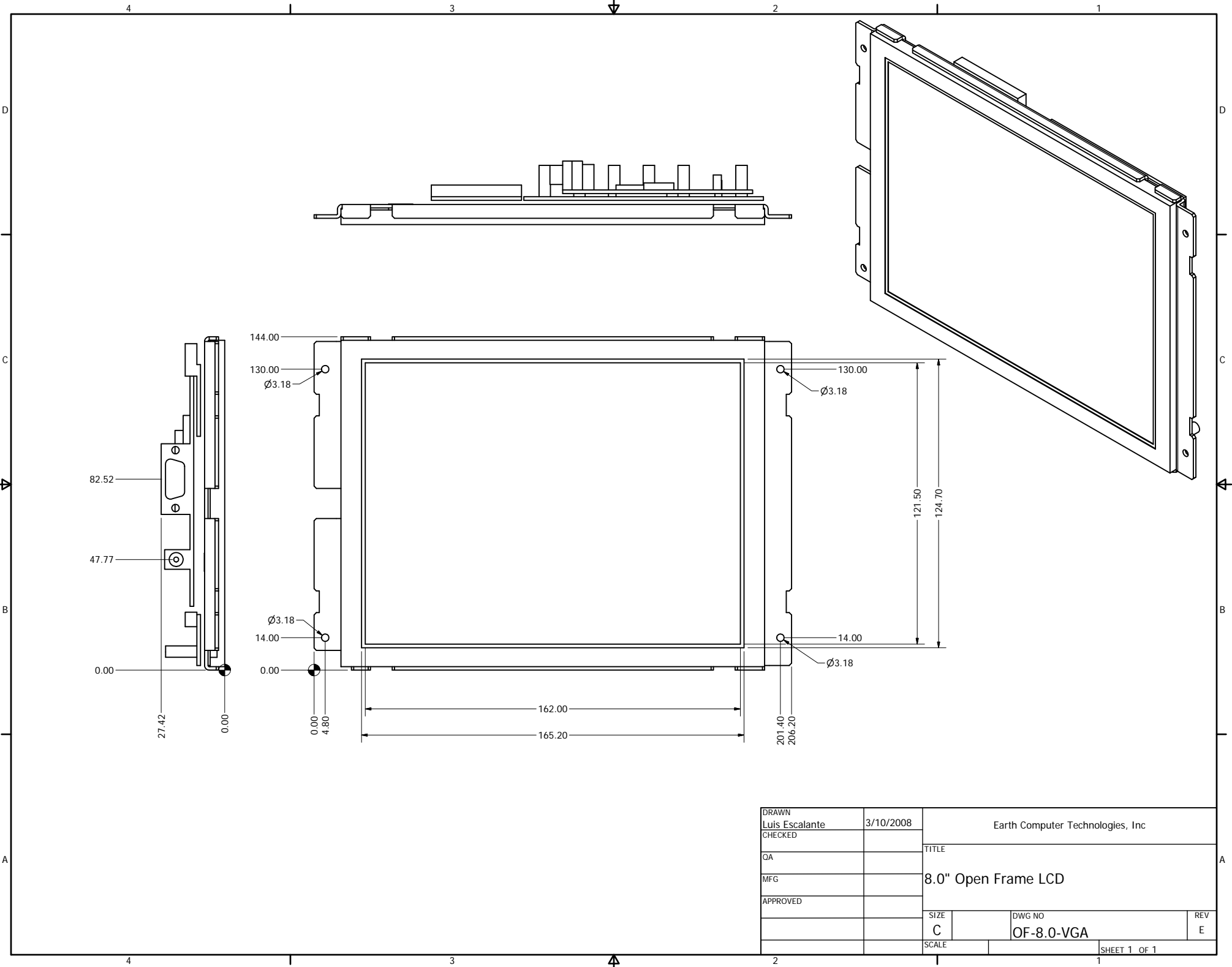
Outline Dimensions (mm): 183 x 141.0

Outline Dimensions (in): 7.20 x 5.55

Cable Included: 6 ft VGA

Touch Screen Available: Yes

Industrial Enclosure Available: Yes



DRAWN	Luis Escalante	3/10/2008	Earth Computer Technologies, Inc	
CHECKED			TITLE	
QA			8.0" Open Frame LCD	
MFG			SIZE	DWG NO
APPROVED			C	OF-8.0-VGA
			SCALE	REV
				E
			SHEET 1 OF 1	