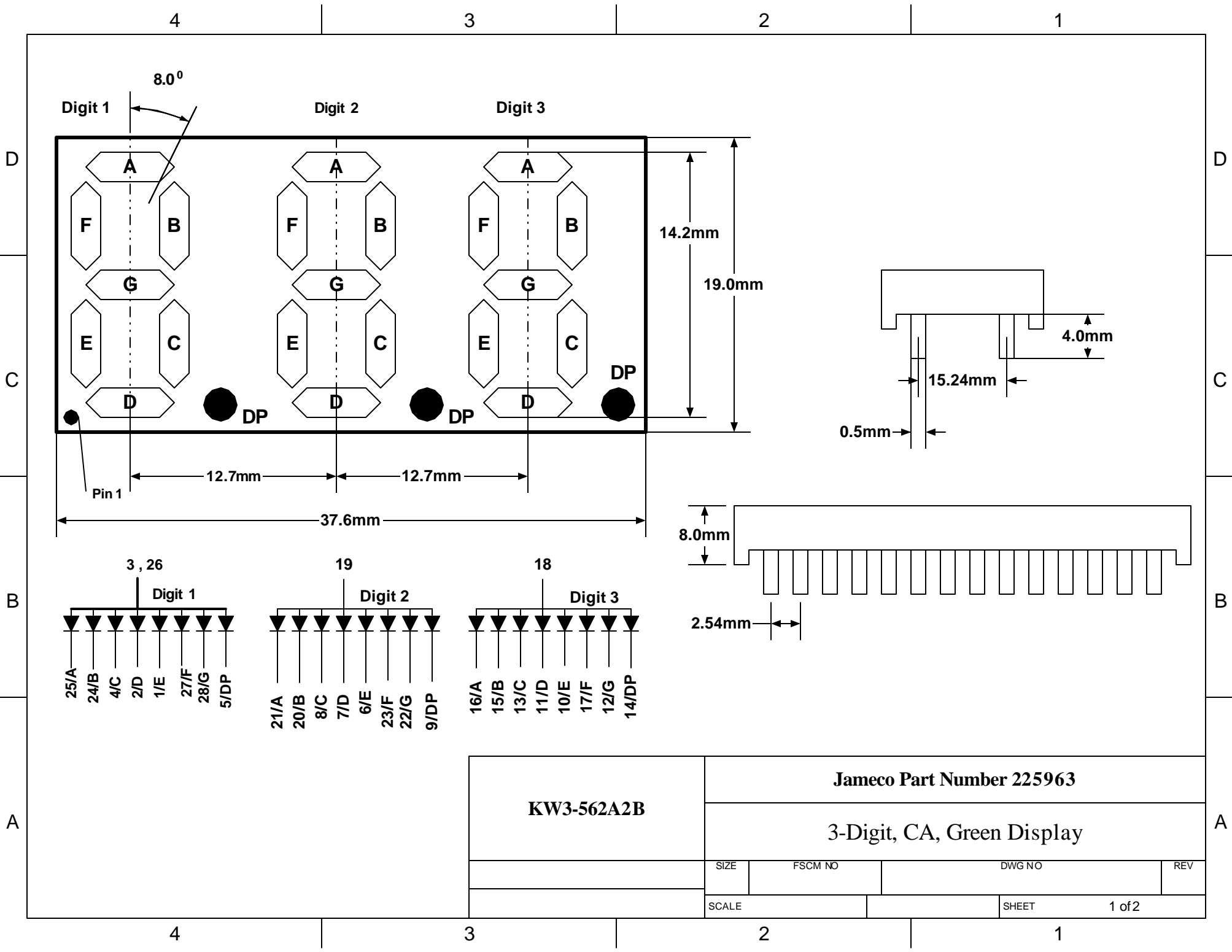


Distributed by:

**JAMECO<sup>®</sup>**  
**ELECTRONICS**

[www.Jameco.com](http://www.Jameco.com) ♦ 1-800-831-4242

The content and copyrights of the attached  
material are the property of its owner.



**Jameco Part Number 225963**

**3-Digit, CA, Green Display**

**KW3-562A2B**

	SIZE	FSCM NO	DWG NO	REV
	SCALE	SHEET		1 of 2

## Absolute Maximum Ratings at Ta = 25°C

Parameter	Maximum	Unit
Power Dissipation	100	mW
Peak Forward Current (1/10 duty cycle, 0.1ms Pulse Width)	100	mA
Continuous Forward Current	50	mA
Derating Linear from 50°C	0.4	mA/°C
Reverse Voltage	5.0	V
Operating Temperature Range	-40 to +80	°C
Storage Temperature Range	-40 to +80	°C
Load Soldering Temperature (1.6mm [.063" from body])	260°C for 5 seconds	

## Electrical Optical Characteristics at Ta = 25°C

Parameter	Min.	Typ.	Max.	Unit	Test Condition
Luminous Intensity	7	15	25	mcd	I = 20mA
Peak Emission Wavelength	563	568	573	nm	I = 20mA
Spectral Line Half-Width	25	30	35	nm	I = 20mA
Forward Voltage	1.7	2.2	2.6	V	I = 20mA
Reverse Current	--	--	100	uA	V <sub>R</sub> = 5V