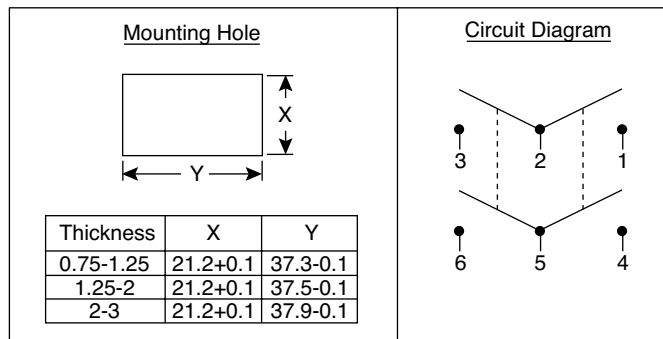
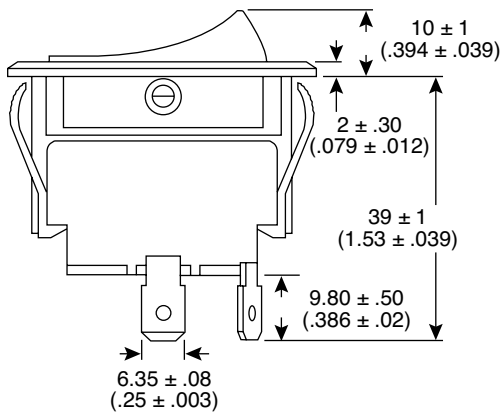
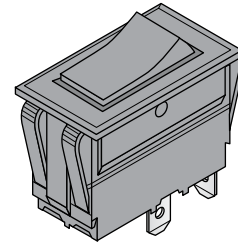
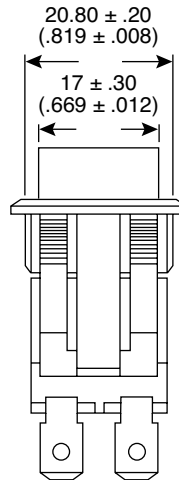
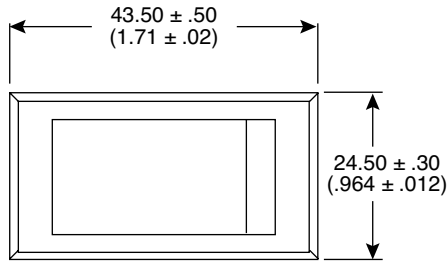


Dimensions: mm (in.)



Stock No.	Type	Circuit	Button Color / Mark
103-7043-EVX	2P SPST	On-Off	On - Off
103-7044-EVX	6P DPDT	On-Off-On	Black
103-7045-EVX	4P DPST	On-Off	Black

Electrical Specifications:

- Rating: 16A / 125VAC, 10A / 250VAC
- Contact Resistance: 50m Ω max.
- Insulation Resistance: 500 VDC 100M Ω min.
- Dielectric Strength: 1500 VAC 1 minute

Note:

- RoHS Compliant by Exemption

Mechanical Specifications:

- Operating Temperature: -20° ~ 85°

Rocker Switches

103-7043-EVX, 103-7044-EVX, 103-7045-EVX

