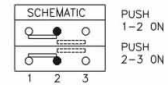
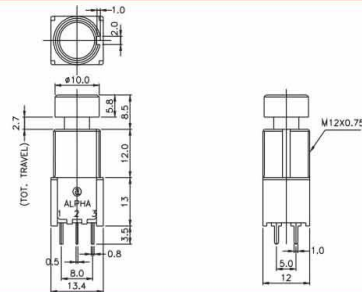


FOOT SWITCH

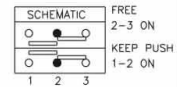
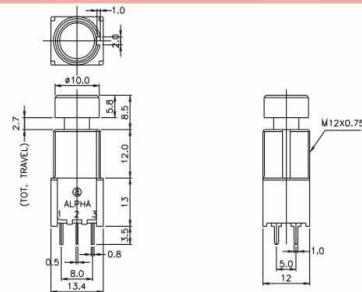
SPECIFICATION

Rating	: 125V AC 6A 250V AC 3A 30V DC 4A
Contact Resistance	: 50mΩ max.
Insulation Resistance	: 500V DC-100MΩ min.
Withstand Voltage	: 1000V AC-1 minute
Operating Force	: -L: 1.6 ±0.5kgf -M: 2.8 ±0.8kgf
Life Cycle	: -L=10,000 cycles -M=20,000 cycles
Size (mm)	: As Following Drawings

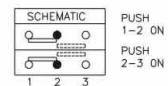
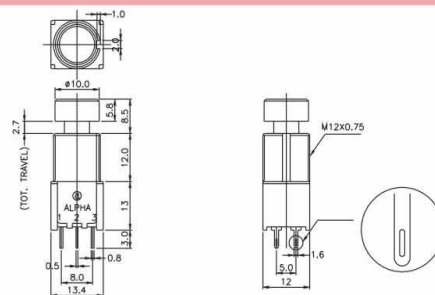
SF12011F-0202-20R-L-011
SF12011DF-0202-20R-L-011



SF12011F-0202-20R-M-011
SF12011DF-0202-20R-M-011



SF12020F-0202-20R-L-011
SF12020DF-0202-20R-L-011



SF12020F-0202-20R-M-011
SF12020DF-0202-20R-M-011

