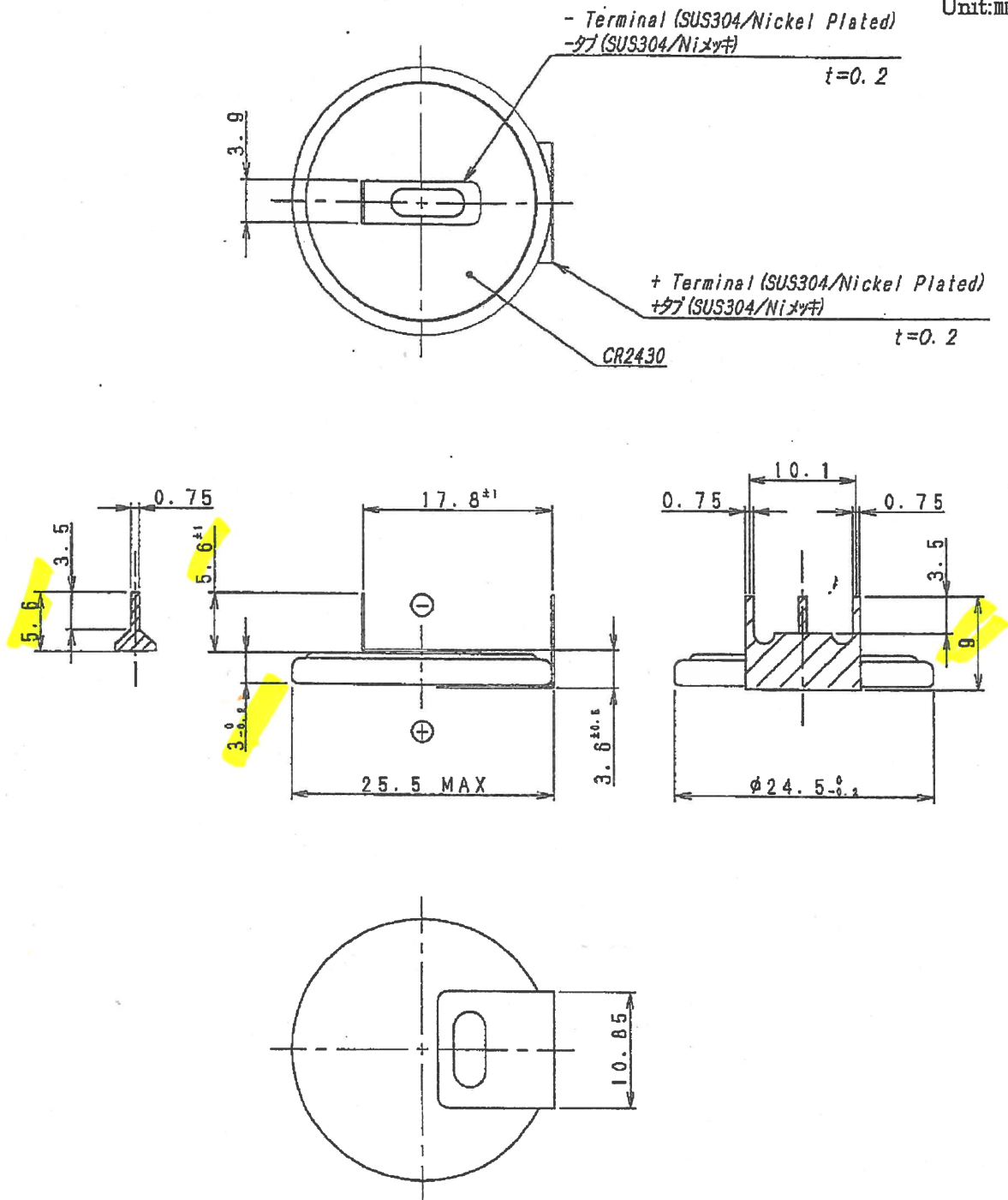


**Fig.1 Shape and Dimensions**  
**Item : CR2430-F2AW3**

Unit:mm



- Note 1) Tab : Nickel plated stainless steel plate of 0.2t.  
 2) Tab welding : Lazer welding (2~4 points)  
 3) Welded strength of tab : The tab shall be endure a pulling force at 19.6N for 10 sec..  
 (at a right angle with the terminal of the battery)  
 4) Condition of soldering : Temp.; 250~270°C, Time; less than 5 sec..  
 5) The gap between the center of tab and center of battery shall be less than 1mm.  
 6) Tin-plated part : The top of tab. (hatching part)