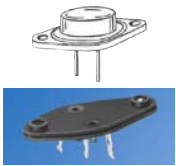
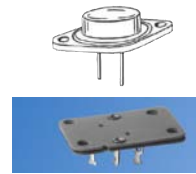


# SOCKETS FOR TO-3 CASE



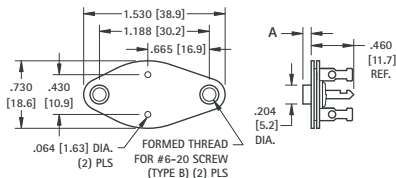
### VARIOUS MOLDED BOSS HEIGHTS

**MATERIAL:**  
**Base:** Phenolic, Grade PBE, Type XP  
**Contacts:** Brass, Tin Plate  
**Top Plate:** Nylon, ASTM-D4066  
 Phenolic, Grade PBE, Type XP  
 (Cat. No. 4606 only)  
**Collector Plate:** Steel, Tin Plate

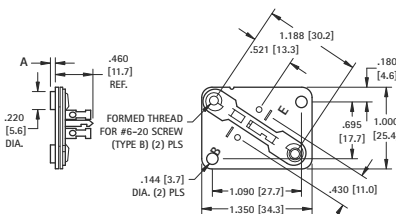


Socket and transistor are assembled to chassis at same time, using the minimum amount of hardware. Top molded boss ensure the transistor leads will be isolated from the chassis. Various boss heights available to accommodate different chassis thicknesses.

Socket is installed onto chassis using eyelets or screws. Transistor is installed afterwards. Assembly and repairs are simplified since socket will stay in place without transistor mounted. Top molded boss or added bushing ensure the transistor leads will be isolated from the chassis. Various boss heights available to accommodate standard chassis thicknesses. Use Cat. No. 4606 and nylon bushings for special chassis thicknesses.



| CAT. NO. | A DIM.      |
|----------|-------------|
| 4603     | .030 (.76)  |
| 4602     | .045 (1.14) |
| 4601     | .090 (2.29) |



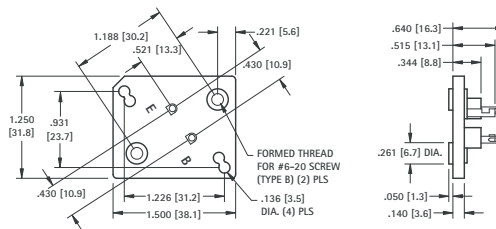
| CAT. NO. | A DIM.      |
|----------|-------------|
| 4606     | NONE        |
| 4607     | .030 (.76)  |
| 4608     | .045 (1.14) |
| 4609     | .060 (1.52) |
| 4618     | .125 (3.2)  |

## FULLY MOLDED TO-3 SOCKET



Pre-assembling the socket to the chassis by eyelets or rivets permits the installation of the semiconductor at a later stage in the assembly. The molded top boss eliminates hardware.

**MATERIAL:**  
**Base:** Molded Nylon 6/6  
**Contacts:** Brass, Tin Plate  
**Collector Plate:** Steel, Tin Plate

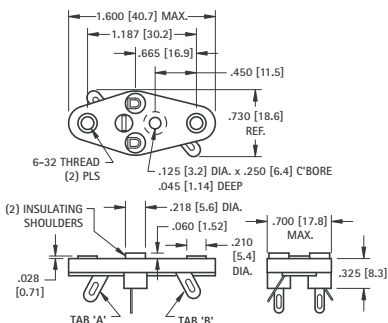


CAT. NO. 4620

## HEAVY DUTY SOCKET FOR TO-3 CASE

### CHOICE OF SINGLE OR DUAL COLLECTOR SOLDER TABS

Features an all-in-one mounting plate and solder tabs, providing complete electrical isolation of the solder tab connections. Rated 5 Amps DC continuous and 15 Amps DC Intermittent



**MATERIAL:**  
**Base:** Glass Filled Polyester, UL Rated 94V-0  
**Contacts:** Brass, Tin Plate  
**Collector Plate:** Brass, Tin Plate

With transistor lead-in insulating shoulders

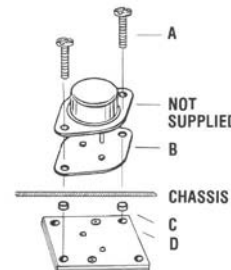
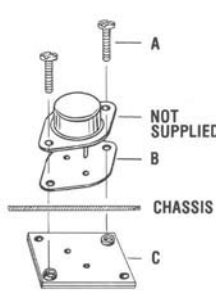
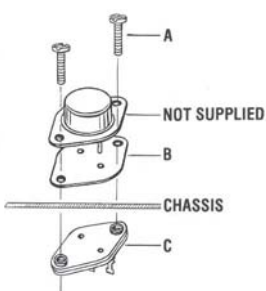
| CAT. NO. | WITH TAB  |
|----------|-----------|
| 4513     | "A" ONLY  |
| 4514     | "A" & "B" |

Less transistor lead-in insulating shoulders

| CAT. NO. | WITH TAB  |
|----------|-----------|
| 4515     | "A" ONLY  |
| 4516     | "A" & "B" |

## TO-3 CASE MOUNTING KITS

These socket kits provide everything needed to mount a transistor onto a chassis in one kit. Nylon bushings or boss will insulate transistor leads from chassis. Mica insulator isolates transistor from chassis. Two 6-20 screws included to mount transistor. (Transistor not included)



| CAT. NO. 4732 Complete Mounting Kit |          |                |          |
|-------------------------------------|----------|----------------|----------|
| ITEM                                | CAT. NO. | DESCRIPTION    | QUANTITY |
| A                                   | 4706     | 6-20 screws    | 2        |
| B                                   | 4651     | Mica Insulator | 1        |
| C                                   | 4602     | Socket         | 1        |

| CAT. NO. 4733 Complete Mounting Kit |          |                |          |
|-------------------------------------|----------|----------------|----------|
| ITEM                                | CAT. NO. | DESCRIPTION    | QUANTITY |
| A                                   | 4706     | 6-20 screws    | 2        |
| B                                   | 4651     | Mica Insulator | 1        |
| C                                   | 4608     | Square Socket  | 1        |

| CAT. NO. 4734 Complete Mounting Kit |          |                |          |
|-------------------------------------|----------|----------------|----------|
| ITEM                                | CAT. NO. | DESCRIPTION    | QUANTITY |
| A                                   | 4706     | 6-20 screws    | 2        |
| B                                   | 4651     | Mica Insulator | 1        |
| C                                   | 4684     | Nylon Bushing  | 4        |
| D                                   | 4606     | Square Socket  | 1        |