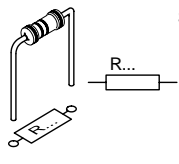


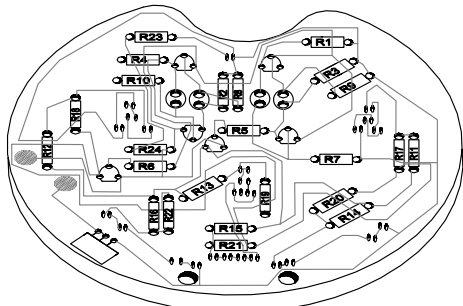
START

1

Resistor - Weerstand - Résistance - Widerstand - Resistencia - Motstand - Vastus - Resistenze



SOLDER SIDE



◇ R1 ... R6 : 10K

(Brown, Black, Orange) - (Bruin, Zwart, Oranje) - (Brun, noir, Orange) - (Braun, Schwarz, Orange) - (Brun, Svart, Orange) - (Ruskea, Musta, Oranssi) - (Marrón, Negro, Naranjado) - (Castanho, Preto, Laranja) - (Marrone, Nero, Aranciato)

◇ R7 ... R10 : 100K

(Brown, Black, Yellow) - (Bruin, zwart, Geel) - (Brun, noir, Jaune) - (Braun, Schwarz, Gelb) - (Brun, Svart, Gul) - (Ruskea, Musta, Keltainen) - (Marrón, Negro, Amarillo) - (Castanho, Preto, Amarelo) - (Marrone, Nero, Giallo)

◇ R11 ... R16 : 330

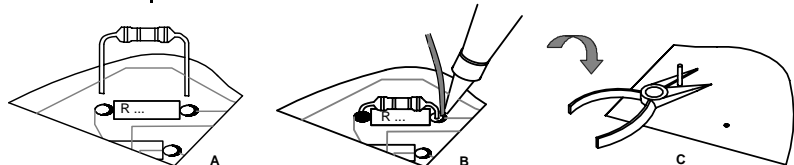
(Orange, Orange, Brown) - (Oranje, Oranje, Bruin) - (Orange, Orange, Brun) - (Orange, Orange, Braun) - (Orange, Orange, Brun) - (Oranssi, Oranssi, Ruskea) - (Naranjado, Naranjado, Marrón) - (Laranja, Laranja, Castanho) - (Aranciato, Aranciato, Marrone)

◇ R17 ... R22, R24 : 180

(Brown, Grey, Brown) - (Bruin, Grijs, Bruin) - (Brun, Gris, Brun) - (Braun, Grau, Braun) - (Brun, Grá, Brun) - (Ruskea, Harmaa, Ruskea) - (Marrón, Gris, Marrón) - (Castanho, Cinzento, Castanho) - (Marrone, Grigio, Marrone)

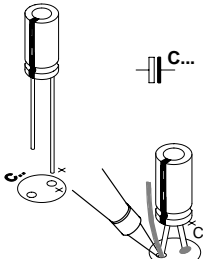
◇ R23 : 1K

(Brown, Black, Red) - (Bruin, Zwart, Rood) - (Brun, Noir, Rouge) - (Braun, Schwarz, Rot) - (Brun, Svart, Röd) - (Ruskea, Musta, Punainen) - (Marrón, Negro, Rojo) - (Castanho, Preto, Encarnado) - (Marrone, Nero, Rosso)



2

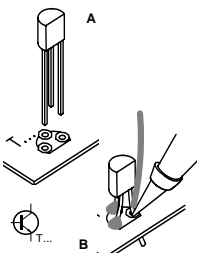
ELECTROLYTIC CAPACITORS



◇ C1 ... C4 : 10µF

3

TRANSISTORS



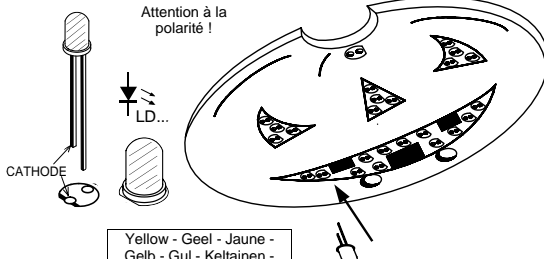
◇ T1 ... T6 : BC547

4

3mm LED'S

Watch the polarity !

Attention à la polarité !

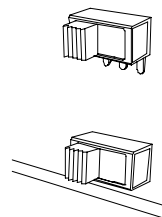


Yellow - Geel - Jaune - Gelb - Gul - Keltainen - Amarillo - Amarelo - Giallo

◇ 24 X

5

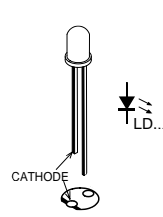
SWITCH



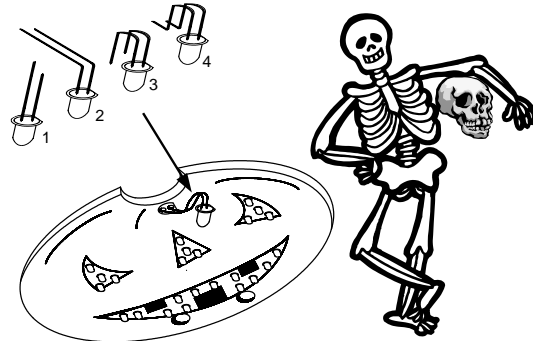
◇ SW1 : ON / OFF

6

5mm LED

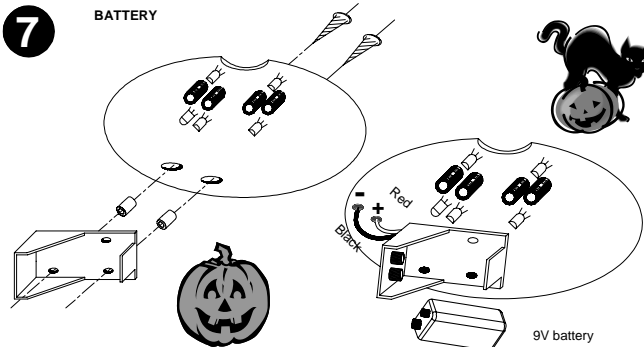


◇ 1 X



7

BATTERY



9V battery

SCHEMATIC DIAGRAM

