

Distributed by:

JAMECO[®]
ELECTRONICS

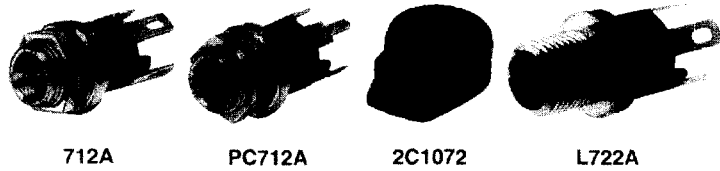
www.Jameco.com ♦ 1-800-831-4242

The content and copyrights of the attached
material are the property of its owner.

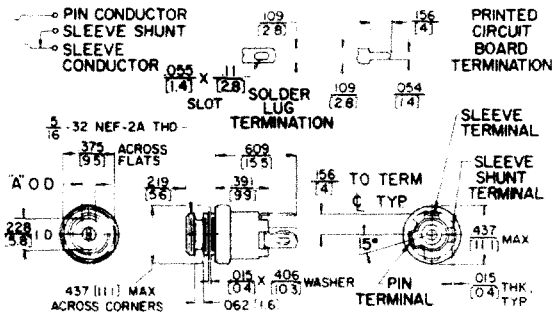
Jameco Part Number 281851

SWITCHCRAFT, INC. 5555 N. Elston Ave. • Chicago, IL 60630 • 773 792-2700 • FAX: 773 792-2129 • www.switchcraft.com

STRAIGHT MINIATURE POWER JACKS



712A



FEATURES

- Automatic switch over from AC to DC permitted by sleeve shunt spring.
- Split center pin shaped to hold mating plug firmly.
- Bushing length available as .219" or extended .319 to permit use in thicker panels.
- L712A and PCL712A accept plugs with .475" long, 0.099" diameter sleeve.
- L722A and PCL722A accept plugs with .475" long, 0.08" diameter sleeve.
- Non-turn mounting possible using standard "D" shape bushing.

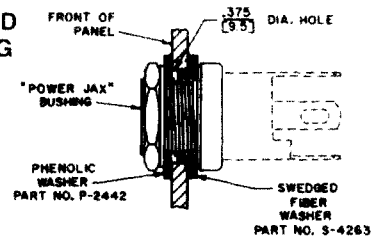
MOUNTING

Part Numbers 712A and 722A - Mounts in .313 inch diameter hole in panels up to .125 inches thick (maximum).
Part Numbers PC712A and PC722A - Same as 712A. See drawing for PC board layout.
Part Number 2C1072 - Jack covers for 712A and 722A. Special order only.

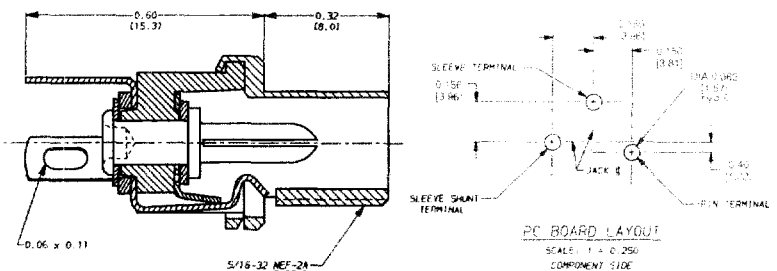
For insulated mounting, two insulated washers are available on special order. Mounting hole diameter is .375 inches. See "Insulated Mounting" drawing.

- ♦ **Part Number P2442** - Phenolic flat washer.
- ♦ **Part Number S4263** - Swedged fiber washer.

INSULATED MOUNTING



PC712A



SPECIFICATIONS

MECHANICAL

Life: 10,000 insertion/withdrawal cycles minimum.
Insertion/Withdrawal Forces: 3 pound insertion (maximum), 4 ounce minimum withdrawal.

Part Numbers 712A, PC712A, 722A, PC722A

ELECTRICAL

Contact Resistance: .01 ohms maximum (initial),
 .02 ohms maximum (after humidity, durability exposure),
 .1 ohms maximum (after salt spray).
Insulation Resistance: 10,000 MΩ minimum (initial),
 1,000 MΩ minimum (after humidity, durability exposure).
Dielectric Withstanding Voltage: 500 V AC maximum.
Contact Rating: 5 A, 12 V DC, resistive.

MATERIAL

Housing: Molded plastic.
Mounting Bushing and Hex Nut: Plated copper alloy.
Pin, Spring and Terminals: Plated copper alloy.
Insulators: Rigid plastic.
Hardware: Supplied with one **Number P2439**

nickel-plated brass hex nut, and one **Number P2441** nickel-plated steel flat washer.

2- CONDUCTOR RECEPTACLES WITH SLEEVE SHUNT SPRING

Part Number	Description	Outside Diameter ¹	Typical Mating Plug ²
712A	Solder lugs	0.1 inches (.097-.099)	760
PC712A	PC terminals		760K
L712A ³	Longer Bushing	0.08 inches (.075-.077)	761K
722A	Solder lugs		S760
PC722A	PC terminals		S760K
L722A ³	Longer Bushing		S761K

¹ Center pin diameter.
² Other Mating Plugs are available.
³ Also available PCL712A and PCL722A

DIMENSIONS ARE FOR REFERENCE ONLY $\frac{\text{inch}}{\text{(mm)}}$

NOTE: Contact your Switchcraft Representative for price and delivery.