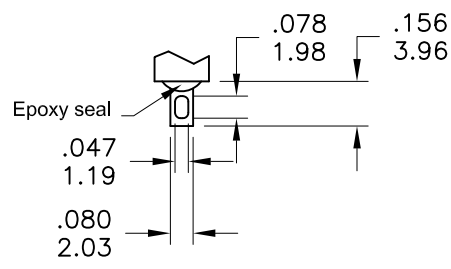


PANEL MOUNTING



SOLDER LUG

Date	Rev.	Description

Model No.	POS.1	---	POS.2
		---	
1MD1	ON	---	ON
Term. Comm.	2-3,5-6	N/A	2-1,5-4
SCHEMATIC			

SWITCH FUNCTION

**SPECIFICATIONS**

**MECHANICAL LIFE:** 40,000 make-and-break cycles.  
**CONTACT RESISTANCE:** 10mΩ max. initial @ 2-4VDC  
 100mA for both silver and gold plated contacts.  
**INSULATION RESISTANCE:** 1,000MΩ min.  
**DIELECTRIC STRENGTH:** 1,000 V RMS@sea level.  
**OPERATING TEMPERATURE:** -30°C to 85°C.

**MATERIALS**

**CASE:** Dially phthalate (DAP) (UL94v-0).  
**ACTUATOR:** Brass,chrome plated.  
**BUSHING:** Brass,nickel plated.  
**HOUSING:** Stainless Steel.  
**TERMINAL/CONTACT:** Silver or gold plated.  
**SWITCH SUPPORT :** Brass , Tin plated.

**RATING :**

R : 0.4 Volt-Amps(VA) max. @20V max.(AC or DC)  
 Q : 2Amps @250VAC  
 5Amps @120 VAC or 28 VDC

DCC. NO.
A4 DRAWING NO.

MATERIAL				<b>GOLDSUN ELECTRONICS CO., LTD.</b>			
DRAWN: Ivy		JAMECO NO. 317472		GOLDSUN NO. 1MD1T6B11M1QE		Rev. 1	
VERIFY PEOPLE: Chesley		Description		SHEET 1 OF 1		CAS No: ERN No:	
UNIT: mm		SCALE:		SHEET 1 OF 1		CAS No: ERN No:	