

User's Manual

USB 1.1 Serial adapter

Table of Contents

Safety Instructions.....	1
Introduction.....	1
Features.....	2
System Requirements.....	2
Package Contents.....	2
Specification.....	3
Driver Installation.....	4
Installation Verification.....	13
Certificate.....	15
Disclaimer.....	15

Safety Instructions

Always read the safety instructions carefully

- ▣ Keep this User's Manual for future reference
- ▣ Keep this equipment away from humidity
- ▣ Lay this equipment on a reliable flat surface before setting it up
- ▣ If any of the following situation arises, get the equipment checked by a service technician:
 - The equipment has been exposed to moisture.
 - The equipment has been dropped and damaged.
 - The equipment has obvious sign of breakage.
 - The equipment has not working well or you cannot get it work according to User's Manual.

Introduction

USB1.1 Serial Adapter operates as a bridge between one USB port and standard RS232 Serial port. Users just simply hook the cable into PC or Hub's port, and it can connect any RS-232 devices or DB 9P Male connector.

Features

Advanced 16 Bit processor for USB transaction and control data processing

Compliant with the USB 1.1 specification

USB suspend condition

Plug & play compatible

Utilizes low cost external crystal circuitry

Debug UART for debug and code development

USB host device drivers available

500 kbps rate

System Requirements

IBM Compatible Pentium-233 MHz or faster

64 MB RAM or more.

PC with USB port available.

OS support:

- Windows® 98SE (Vendor Supply)
- Windows® ME (Vendor Supply)
- Windows® 2000 (Vendor Supply)
- Windows® XP (Vendor Supply)

Package Contents

USB 1.1 Serial adapter

Driver CD x 1

Quick Installation Guide x 1

Specification

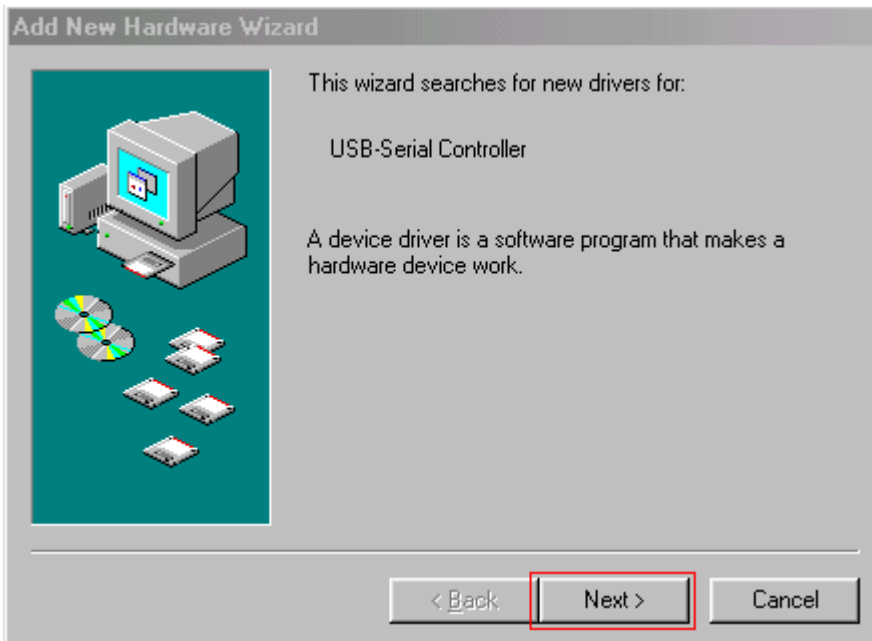
Product Name	USB 1.1 printer adapter
Data Transfer Rate	500 kbps
Function	USB1.1 Serial Adapter operates as a bridge between one USB port and standard RS232 Serial port

Driver Installation

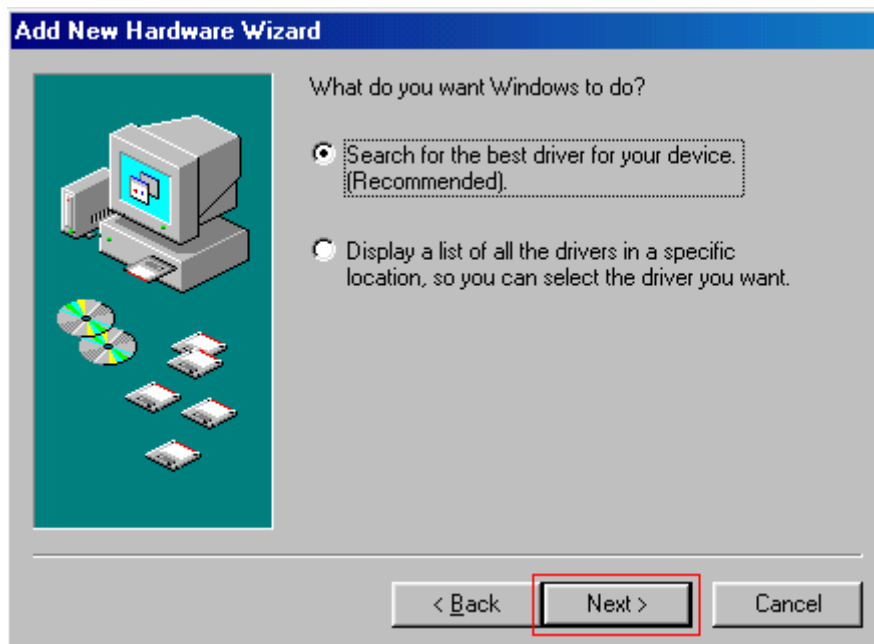
Windows 98SE

Step 1 Insert the Driver CD to your CD-ROM when the first time you turn on the computer after hardware installation completed.

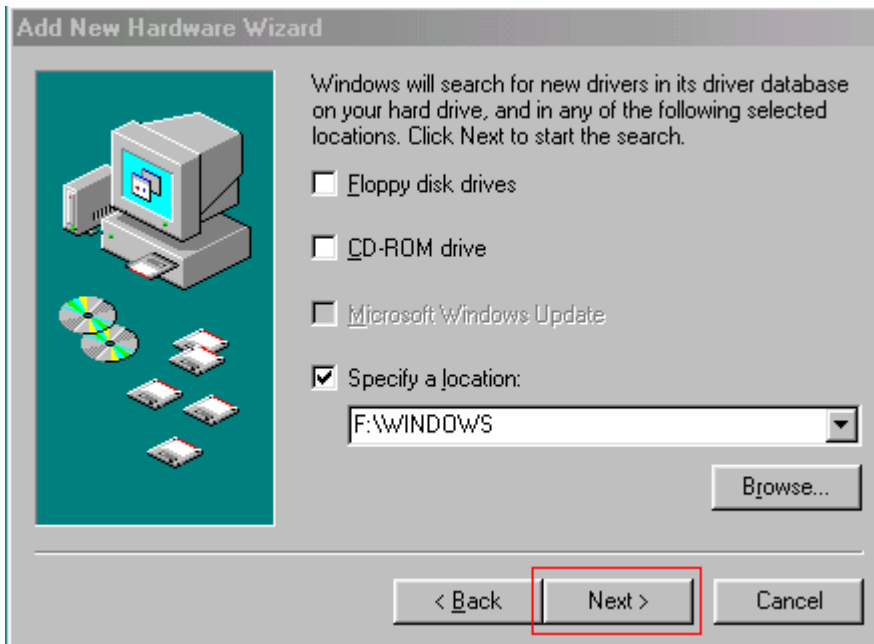
Step 2 Windows searches new device, and click **Next** to continue.



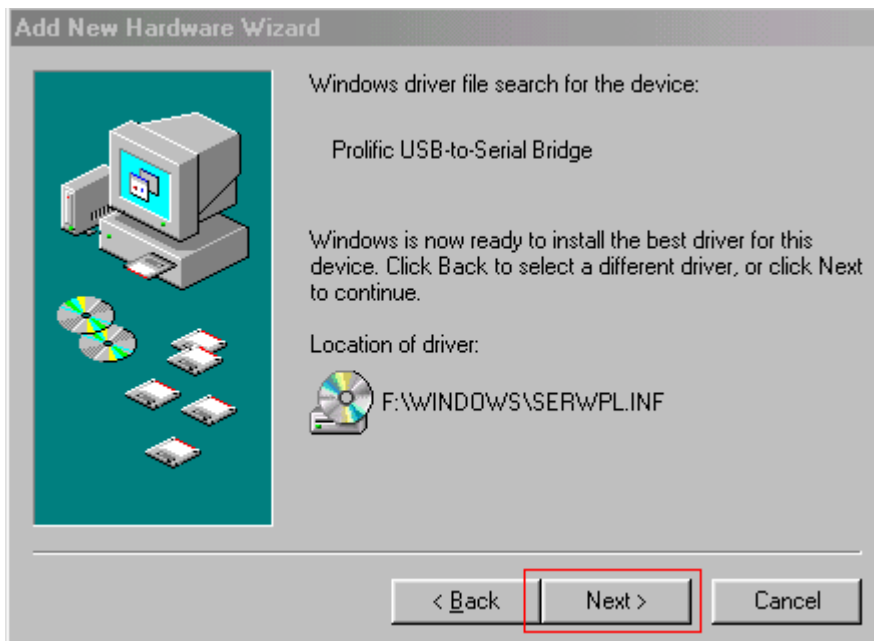
Step 3 Select **Search for the best driver for your device** and click **Next** to continue.



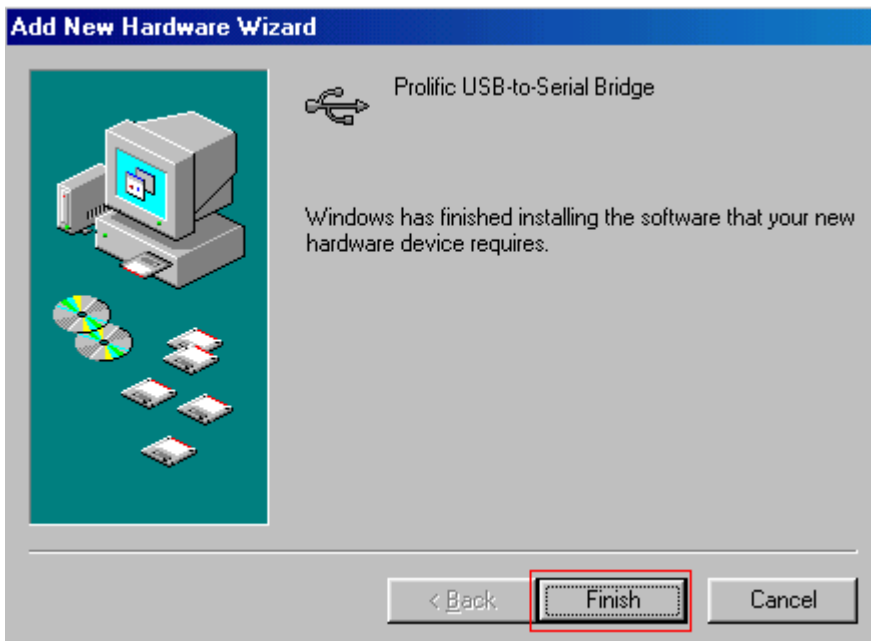
Step 4 Select **Specify a location**, click **Browse** to locate the driver shown as the below image, and click **Next** to continue.



Step 5 Click **Next** to install.



Step 6 The system shows **Windows has finished installing the software that your new hardware device requires.** Click **Finish.**



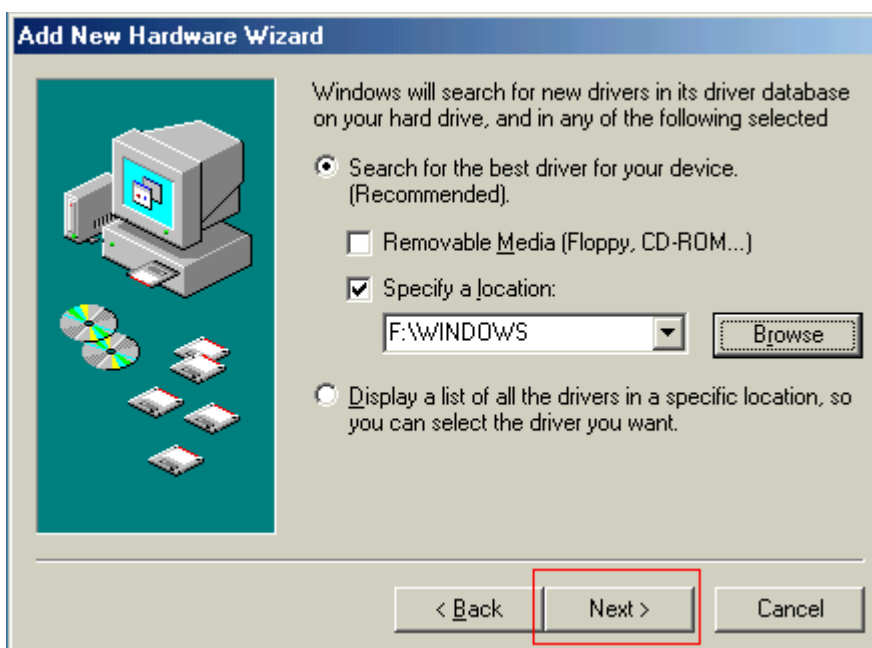
Windows ME

Step 1 Insert the Driver CD to your CD-ROM when the first time you turn on the computer after hardware installation completed.

Step 2 Select **Specify the location of the driver**, Click **Next** to continue.



Step 3 Select **Specify a location**, click **Browse** to locate the driver shown as the below image, and click **Next** to continue.



Step 4 Click **Next** to install.



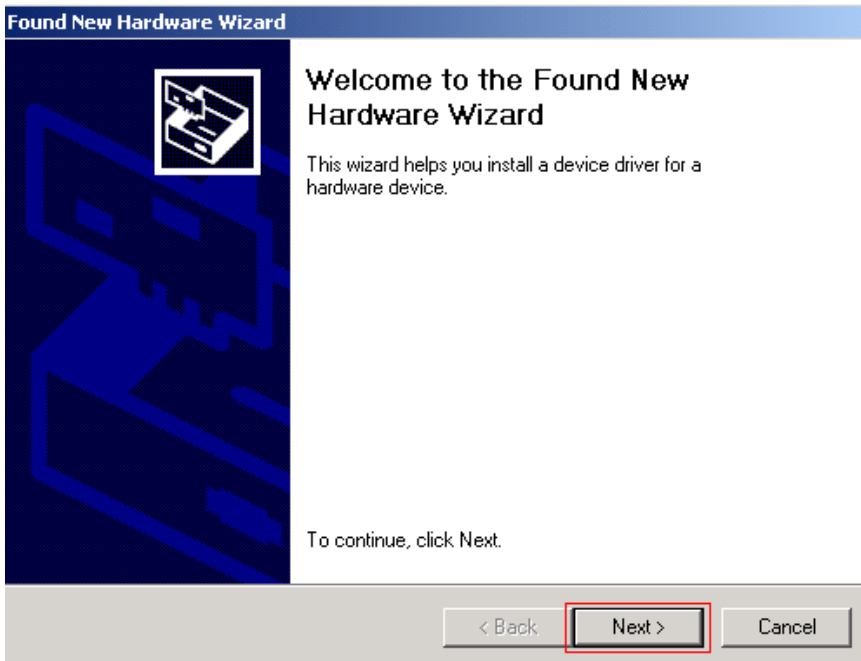
Step 5 The system shows **Windows has finished installing the new hardware device**. Click **Finish**.



Windows 2000

Step 1 Insert the Driver CD to your CD-ROM when the first time you turn on the computer after hardware installation completed.

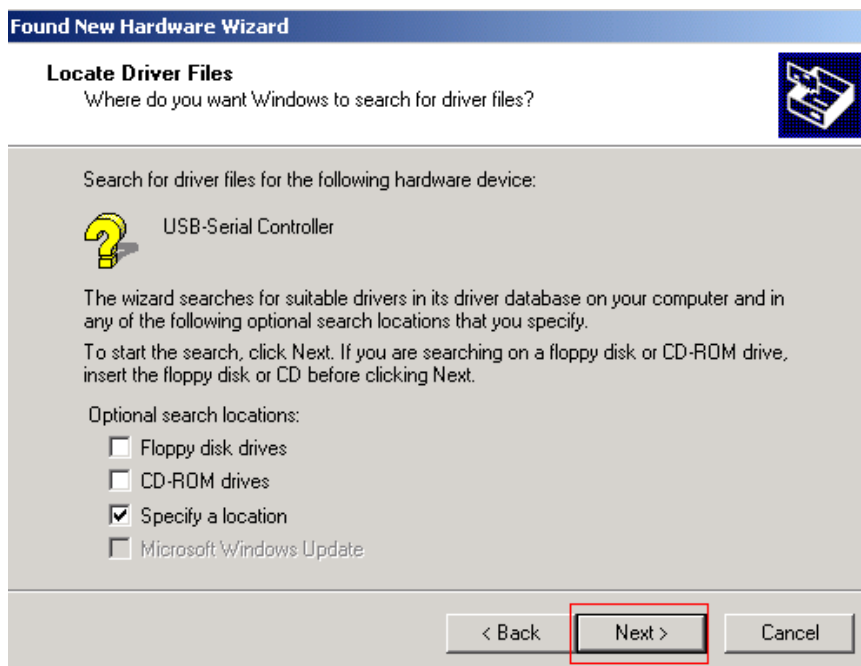
Step 2 Windows searches new device, and click **Next** to continue.



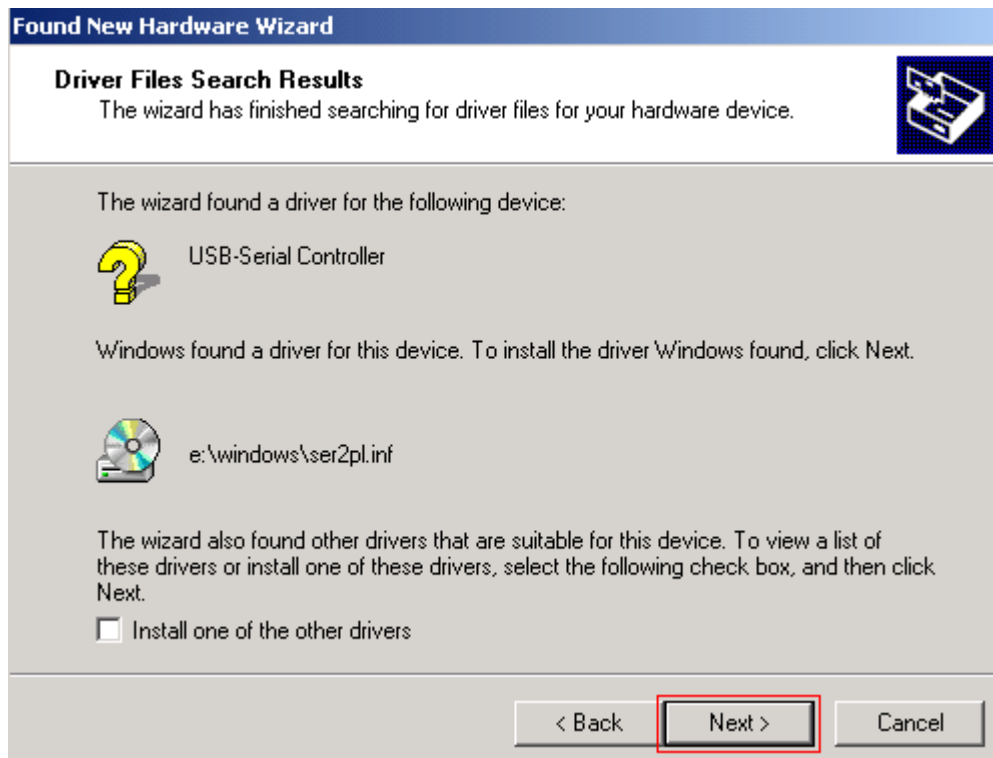
Step 3 Select **Search for a suitable driver for my device**, and click **Next** to continue.



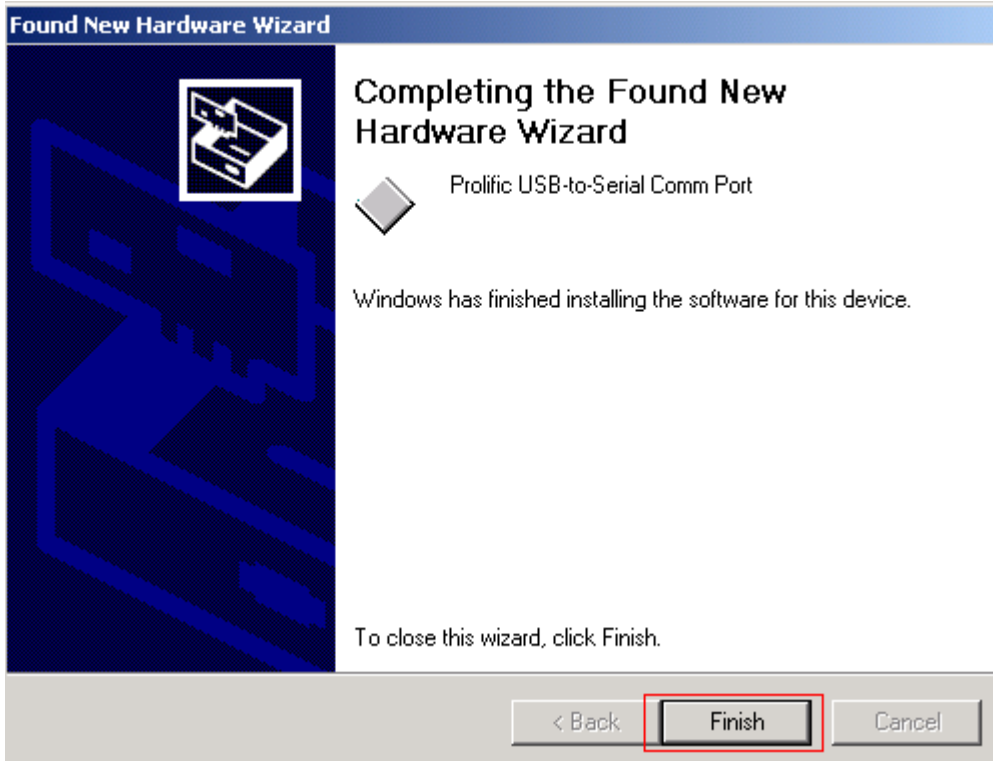
Step 4 Select **Specify a location**, click **Browse** to locate the driver shown as the below image, and click **Next** to continue.



Step 5 Click **Next** to install.

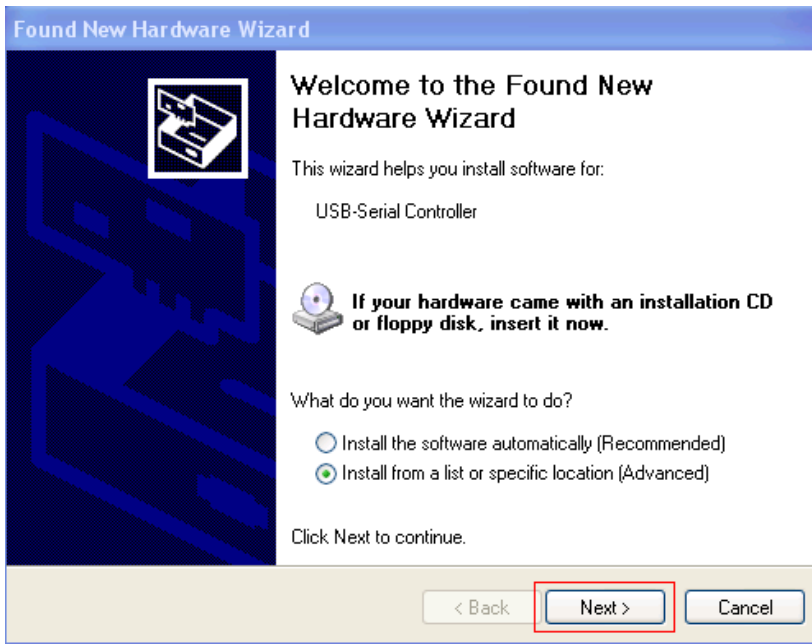


Step 6 The system shows **Windows has finished installing the software for the device**. Click **Finish**.

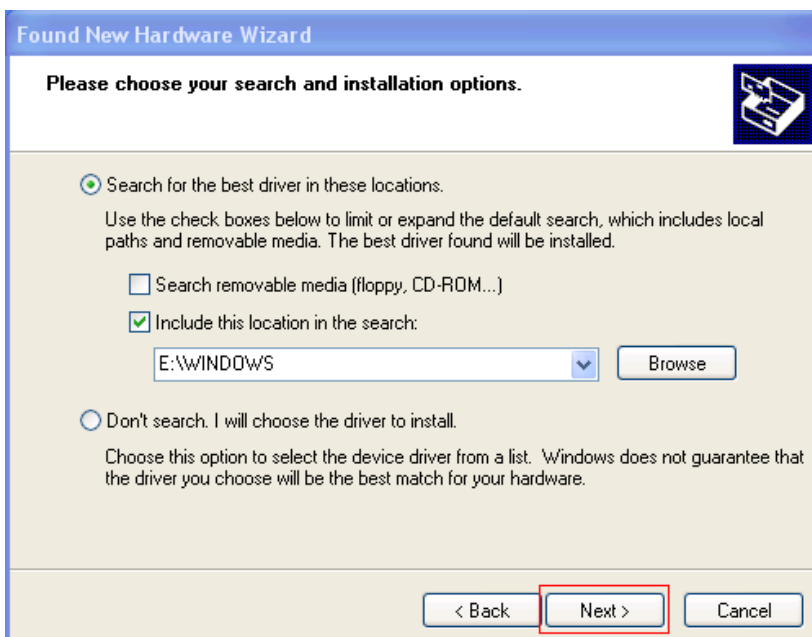


Windows XP

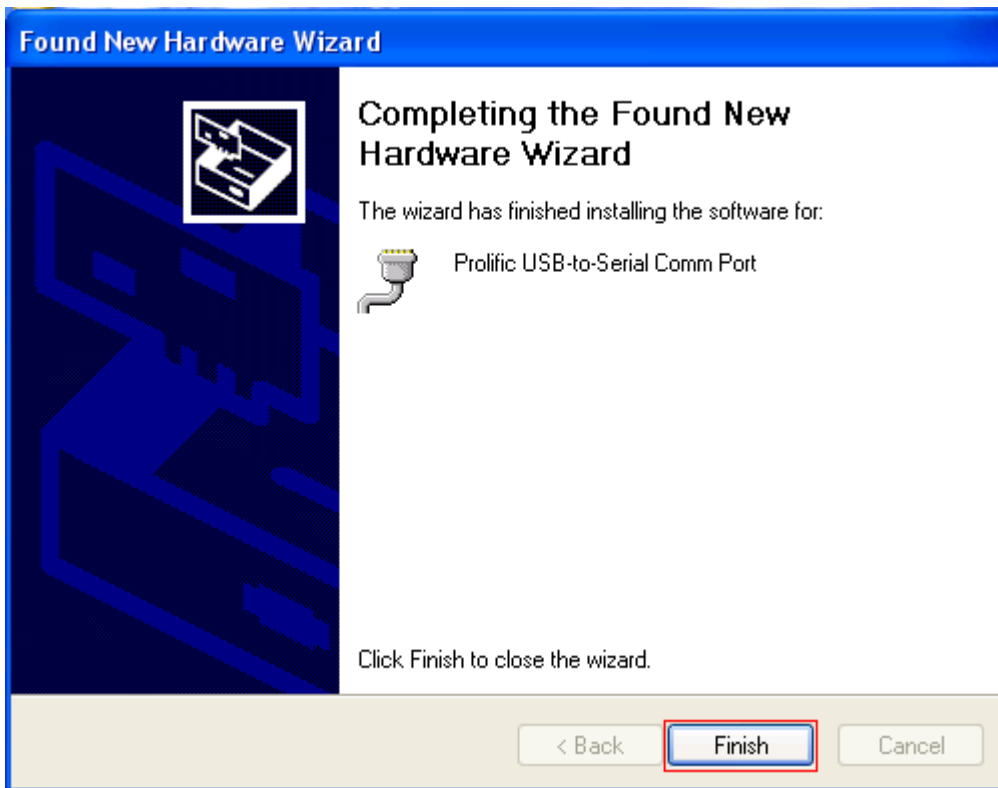
- Step 1 Insert the Driver CD to your CD-ROM when the first time you turn on the computer after hardware installation completed.
- Step 2 Windows searches new device. Select **Install from a list or specific location** and click **Next** to continue.



- Step 3 Select **Search for the best driver in these locations**, click **Browse** to locate the driver shown as the below image, and click **Next** to continue.

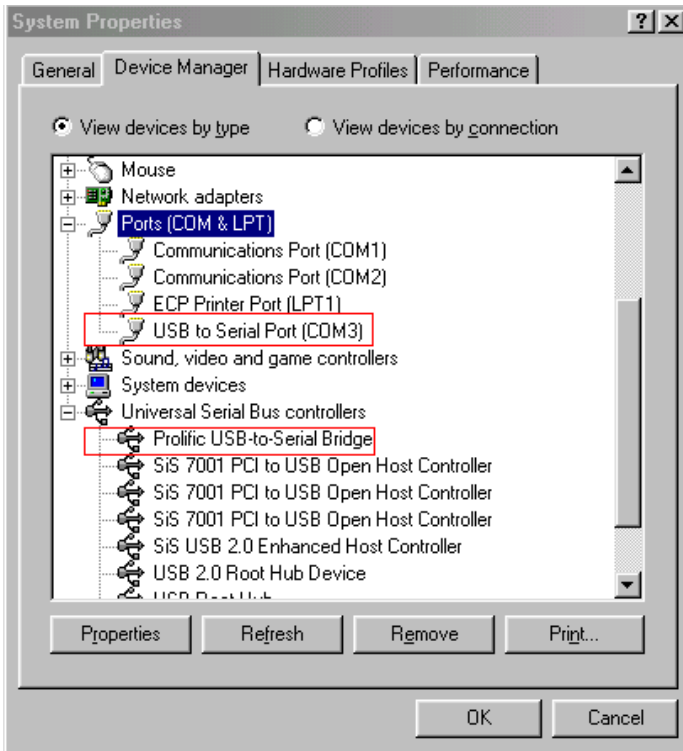


Step 6 The system shows **The wizard has finished installing the software.** Click **Finish.**

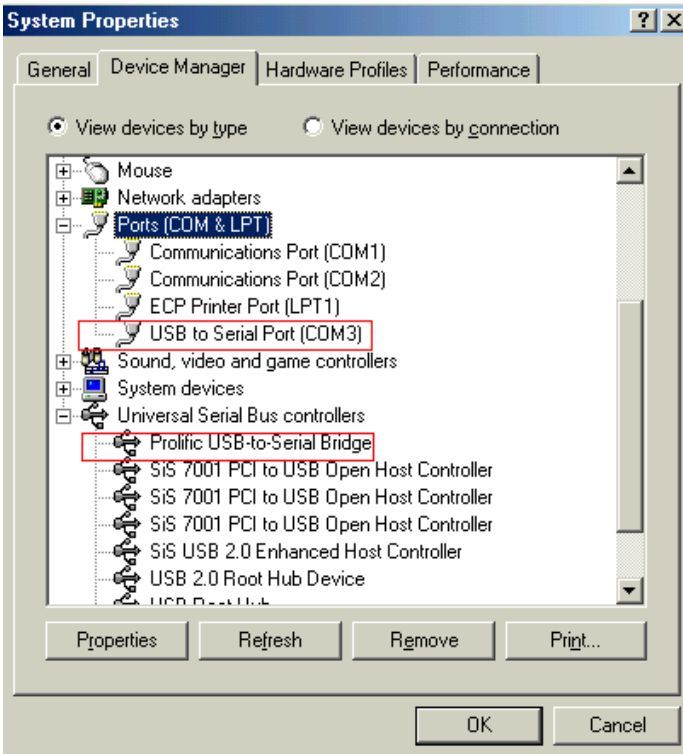


Installation Verification

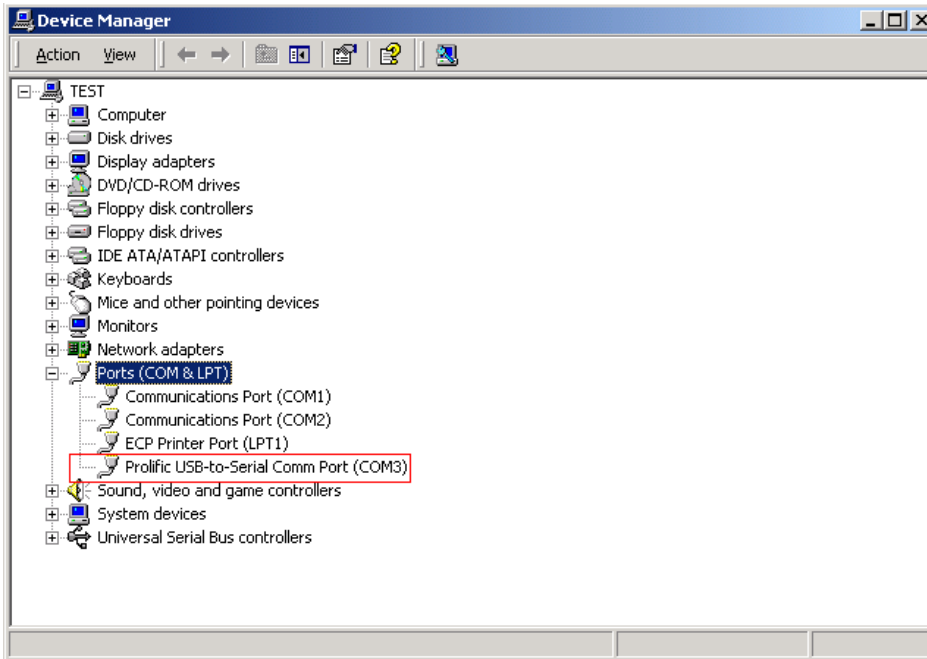
Windows 98SE



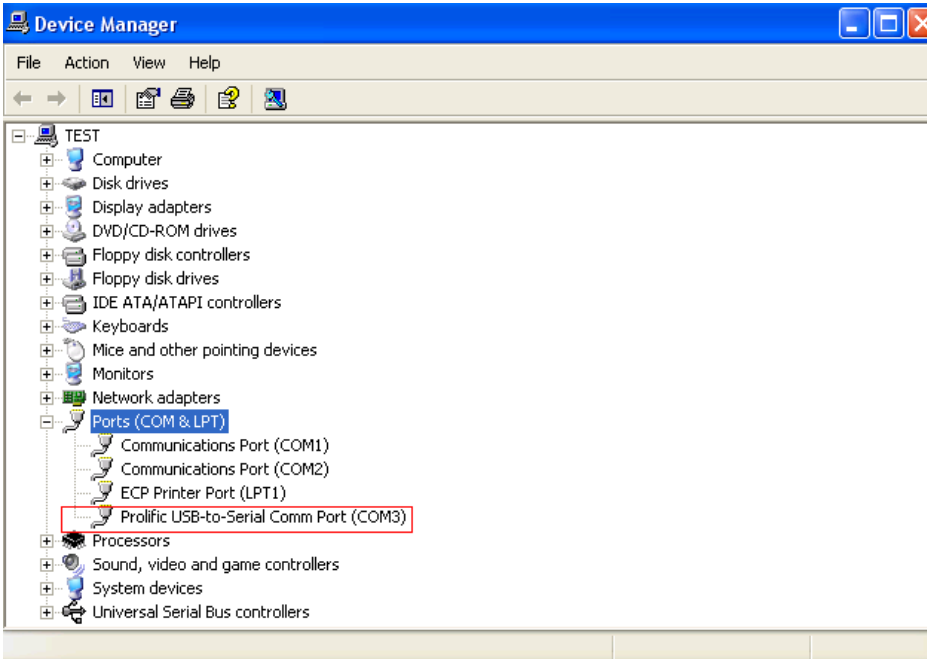
Windows ME



Windows 2000



Windows XP



Certificate

FCC

This equipment has been tested and found to comply with Part 15 of the FCC Rules.

Operation is subject to the following two conditions:

- This device may not cause harmful interference
- This device must accept any interference received. Including interference that may cause undesired operation.

CE – Certificate

This equipment is in compliance with the requirements of the following regulations: EN 55 022: CLASS B



Disclaimer

Information in this document is subject to change without notice. The manufacturer does not make any representations or warranties (implied or otherwise) regarding the accuracy and completeness of this document and shall in no event be liable for any loss of profit or any commercial damage, including but not limited to special, incidental, consequential, or other damage. No part of this document may be reproduced or transmitted in any form by any means, electronic or mechanical, including photocopying, recording or information recording and retrieval systems without the express written permission of the manufacturer.