

1. FEATURES:

- 1-1 Funnel shaped four-fingered and six-fingered contacts provide easy IC insertion and withdrawal, high reliability.
- 1-2 Gold plated contacts to ensure low contact resistance and Tin plated terminal to prevent contamination during soldering.
- 1-3 All plastics are UL 94V-0 grade fire retardant plastics.
- 1-4 Fit standard pitch with 2.54 mm x 2.54 mm (0.100 " x 0.100 ") pin spacing.

2. SPECIFICATION:

2-1 ELECTRICAL

- 2-1-1 Contact Rating 1 Amp DC Max.
- 2-1-2 Contact Resistance 10 m Max.
- 2-1-3 Insulation Resistance 10 M Min. at 100 VDC
- 2-1-4 Dielectric Strength 1000 VAC Min for 60 sec.
- 2-1-5 Capacitance between 0.9 pF Max adjacent pin

2-2 MECHANICAL AND ENVIRONMENTAL

2-2-1 Temperature Rating

Operating -55 to +125

2-2-2 Life cycle

100 cycles Min.

(with insertion and withdrawal)

2-2-3 Humidity

90 % to 95 % RH,
40 for 96 Hrs

2-2-4 Vibration

10 to 55 Hz for 6 Hrs

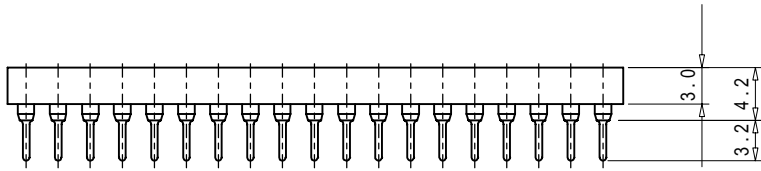
2-2-5 Solderability

230 ± 5 for

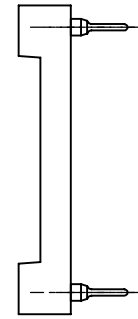
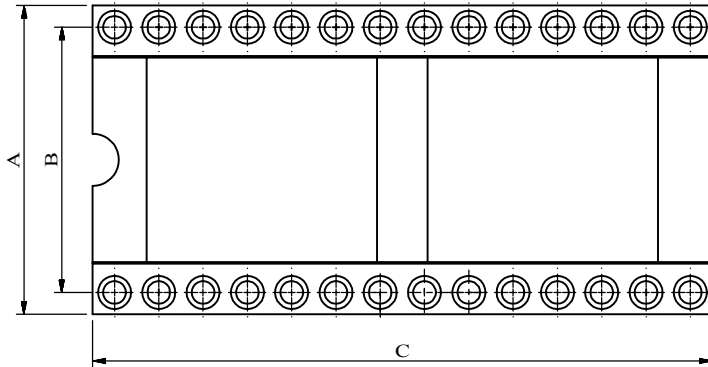
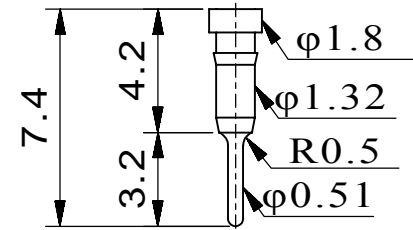
5±0.5 seconds 95 % coverage
After 260±5 for 5±1 sec.
shall have no deterioration

2-2-6 Soldering Heat

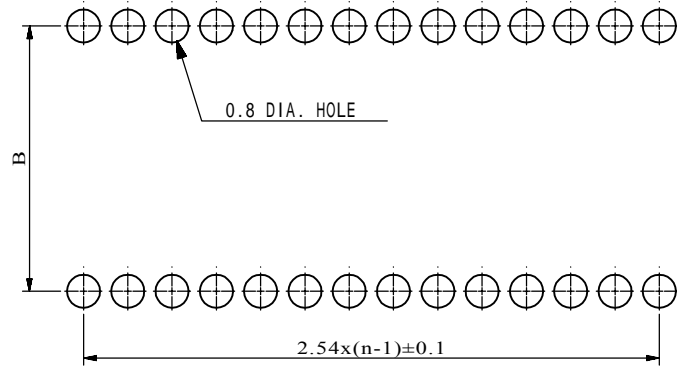
6100 SERIES



STANDARD PIN CONSTRUCTION



P.C.B. LAYOUT



DIMENSION TABLE

PART NO.	NO. PINS	A±0.2mm	B±0.2mm	C±0.2mm
EMS2306XX	6	10.1	7.62	7.6
EMS2308XX	8	10.1	7.62	10.1
EMS2310XX	10	10.1	7.62	12.6
EMS2312XX	12	10.1	7.62	15.2
EMS2314XX	14	10.1	7.62	17.7
EMS2316XX	16	10.1	7.62	20.3
EMS2318XX	18	10.1	7.62	22.8
EMS2320XX	20	10.1	7.62	25.4
EMS2422XX	22	12.7	10.16	27.9
EMS2324XX	24	10.1	7.62	30.4
EMS2624XX	24	17.7	15.24	30.4
EMS2328XX	28	10.1	7.62	35.5
EMS2628XX	28	17.7	15.24	35.5
EMS2632XX	32	17.7	15.24	40.6
EMS2636XX	36	17.7	15.24	45.7
EMS2640XX	40	17.7	15.24	50.8
EMS2642XX	42	17.7	15.24	53.3
EMS2648XX	48	17.7	15.24	60.9
EMS2964XX	64	25.4	22.86	81.2

NO.	DETAILS	ALTERED BY	DATE	NORMAL TOLERANCE		PART NUMBER	UNIT	MM (INCH)	PART NAME	EMS
				RANGE	TOLERANCE					
				0 - 1	±0.1	MATERIAL	SCALE	5 : 3	TYPE	DIP
				1 - 4	±0.3	CHECK GOLDEN DESIGN GOLDEN DRAWN GOLDEN	QUANTITY	-----	FILE NAME	EMS2xxx34B.PRT
				4 - 16	±0.5		PROCESSING	-----	ASSEMBLY NUMBER	-----
				16 - 63	±0.8		PROJECTION		SURFACE TREATMENT	-----
				63 - 250	±1.0					