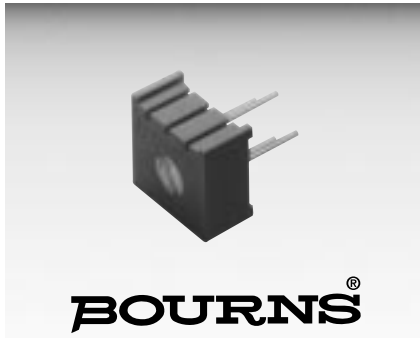


Distributed by:



[www.Jameco.com](http://www.Jameco.com) ♦ 1-800-831-4242

The content and copyrights of the attached material are the property of its owner.



**BOURNS®**

**Features**

- Single-Turn / Cermet / Industrial / Sealed
- Designed for operational amplifier offset voltage adjustment applications
- Reduces power supply drift errors
- Unique center tapped trimming potentiometer

■ Vertical adjust type available

**3386-OT1 - 3/8" Square Trimming Potentiometer**

**Electrical Characteristics**

Standard Resistance Range  
.....100 ohms to 1 megohm  
(see standard resistance table)  
Resistance Tolerance .....±20% std.  
Absolute Minimum Resistance  
.....2 ohms max.  
Voltage Output Variation.....±0.25%  
Adjustability (VR) .....±0.025%  
Insulation Resistance @ 500 vdc  
.....1,000 megohms min.  
Dielectric Strength  
Sea Level .....900 vac  
70,000 Feet .....350 vac  
Effective Electrical Travel.....280° nom.  
Center Tap Resistance .....2 ohms max.  
Center Tap Electrical Center.....±5%  
Center Tap Dead Band.....6°±4°

**Environmental Characteristics**

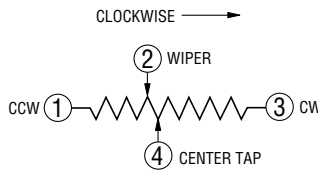
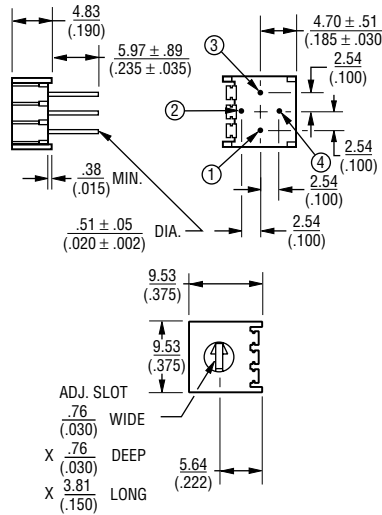
Power Rating  
85°C.....0.5 watt  
150°C.....0 watt  
Temperature Range  
.....-55°C to +150°C  
Temperature Stability (ΔVR)  
.....±0.5% max.  
Seal Test .....85°C Fluorinert\*  
Humidity.....MIL-STD-202 Method 103  
96 hours ±2%  
ΔTR 10 Megohms min.  
Vibration, 30G .....±1% ΔTR  
Shock, 100G .....±1% ΔTR  
Load Life, 1,000 Hours .....±3% ΔTR  
Rotational Life, 200 cycles .....±4% ΔTR

**Physical Characteristics**

Mechanical Angle .....310° nom.  
Torque .....5.0 oz-in. max.  
Stop Strength .....15.0 oz-in. min.  
Terminals .....Solderable pins  
Weight .....0.03 oz.  
Marking .....Manufacturer's  
trademark, resistance code,  
wiring diagram, date  
code, manufacturer's model  
number and style  
Flammability .....U.L. 94V-0  
Standard Packaging  
.....50 pcs. per tube/tray  
Adjustment Tool .....H-90

Also see Model 3296-OT1, page 28.

3386P-OT1



**Standard Resistance Table**

Resistance (Ohms)	Resistance Code
100	101
200	201
500	501
1,000	102
2,000	202
5,000	502
10,000	103
20,000	203
50,000	503
100,000	104
200,000	204
500,000	504
1,000,000	105

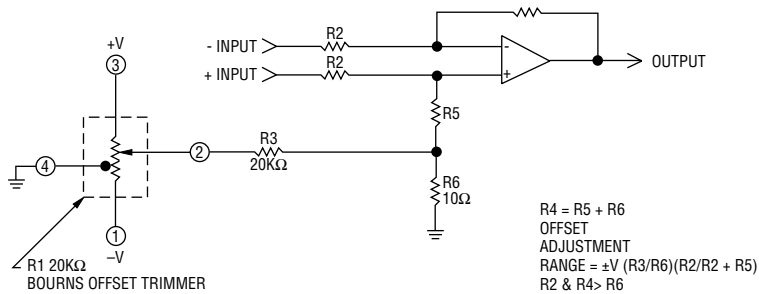
Popular values listed in boldface. Special resistances available.

SHADED AREAS TYPICALLY NOT STOCKED BY DISTRIBUTORS AND NOT RECOMMENDED FOR NEW DESIGNS.

TOLERANCES: ± 0.25 (.010) EXCEPT WHERE NOTED

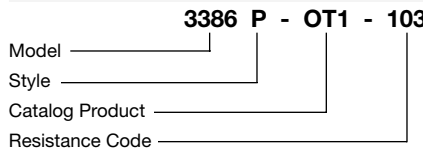
DIMENSIONS ARE:  $\frac{\text{METRIC}}{\text{(INCHES)}}$

**Suggested Offset Voltage Adjustment Circuit**



R4 = R5 + R6  
OFFSET ADJUSTMENT  
RANGE = ±V (R3/R6)(R2/R2 + R5)  
R2 & R4 > R6

**How To Order**



\*"FLUORINERT" IS A REGISTERED TRADEMARK OF 3M CO.