

Distributed by:

JAMECO[®]
ELECTRONICS

www.Jameco.com ♦ 1-800-831-4242

The content and copyrights of the attached
material are the property of its owner.

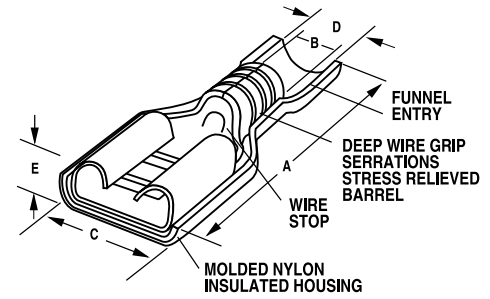
Jameco Part Number 459188

INSULKRIMP®

molex® Fully Insulated Quick Disconnects



- Designed for dense packaging requirements; the profile height is lower than other competing products on the market
- Integrity of mechanical/electrical performance is assured for wire secureness, operating temperatures, tensile strength, dielectric parameters and insertion/extraction forces by meeting UL 310 standards (Listed under UL File No. E79133)
- Color-coded translucent insulator allows easy identification of terminal size and wire gauge: red for 18 to 22 AWG, blue for 14 to 16 AWG and yellow for both 24 to 26 AWG and 10 to 12 AWG (wire size is also stamped on the terminal and visible through the insulator)
- Translucent "see-through" insulator provides fast, on-line quality control inspection by allowing a quick visual check of the wire/terminal assembly
- Terminal's funnel entrance is designed for increased crimping rates by speeding wire delivery into the crimp section and eliminating wire strand fold back
- A wire stop stamped into the crimp barrel prevents insertion of over-stripped wires

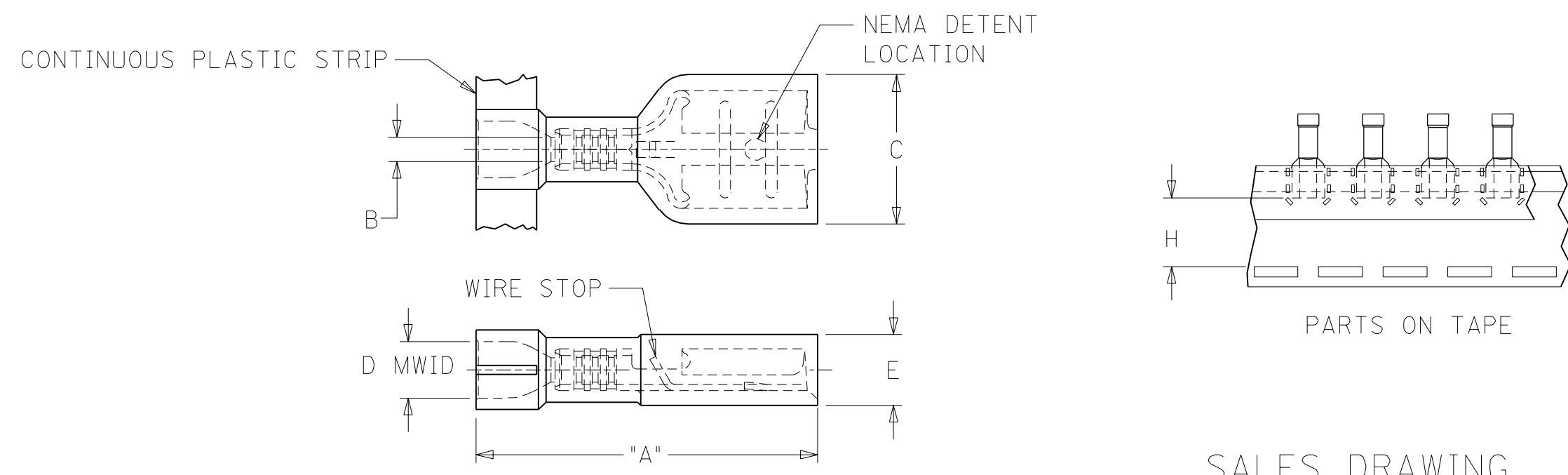


ORDERING INFORMATION AND DIMENSIONS

Fully Insulated Insulkrimp Female Quick Disconnects (Standard Flare)											
Wire Range AWG (mm ²)	Accepts Tab Size (in.)	Loose Piece Order No.	Mylar Tape Order No.	Molded Strip Order No.	Color	Stock (in.)	Dimension (in.)				
							A Max.	B Min.	C Max.	D MWID	E Max.
24-26 (0.20-0.12)	.250 by .032	19003-0071	19003-0073	19003-0106	Yellow	.016	.860	.030	.38	.075	.180
	.187 by .032	19003-0068	19003-0070	19003-0104	Yellow	.016	.780	.030	.32	.075	.160
	.187 by .020	19003-0064	19003-0067	19003-0103	Yellow	.016	.780	.030	.32	.075	.160
18-22 (0.80-0.35)	.250 by .032	19003-0001	19003-0003	19003-0105	Red	.016	.860	.058	.38	.135	.180
	.187 by .020	19003-0011	19003-0013	19003-0107	Red	.016	.780	.058	.32	.135	.160
	.187 by .032	19003-0017	19003-0020	19003-0108	Red	.016	.780	.058	.32	.135	.160
	.205 by .020	19003-0036	19003-0074	19003-0109	Red	.016	.780	.058	.32	.135	.160
	.205 by .032	19003-0038	19003-0075	19003-0110	Red	.016	.780	.058	.32	.135	.160
	.110 by .020	19003-0024	19003-0026	19003-0097	Red	.012	.780	.058	.23	.135	.150
	.110 by .032	19003-0030	19003-0032	19003-0098	Red	.012	.780	.058	.23	.135	.150
14-16 (2.00-1.30)	.250 by .032	19003-0040	19003-0042	19003-0041	Blue	.016	.860	.083	.38	.160	.180
	.187 by .020	19003-0050	19003-0052	19003-0051	Blue	.016	.780	.083	.32	.160	.170
	.187 by .032	19003-0056	19003-0058	19003-0057	Blue	.016	.780	.083	.32	.160	.170
	.205 by .020	19003-0062	19003-0077	19003-0085	Blue	.016	.780	.083	.32	.160	.170
10-12 (5.00-3.30)	.250 by .032	19606-0002	19606-0003	19606-0001	Yellow	.032	1.03	.120	.380	.240	.220

Fully Insulated Insulkrimp Female Quick Disconnects (Expanded Flare)											
Wire Range AWG (mm ²)	Accepts Tab Size (in.)	Loose Piece Order No.	Mylar Tape Order No.	Molded Strip Order No.	Color	Stock (in.)	Dimension (in.)				
							A Max.	B Min.	C Max.	D MWID	E Max.
18-22 (0.80-0.35)	.250 by .032	19003-0008	19003-0010	19003-0009	Red	.016	.935	.058	.380	.230	.180
	.187 by .020	19003-0014	19003-0016	19003-0015	Red	.016	.860	.058	.316	.230	.160
	.187 by .032	19003-0021	19003-0023	19003-0022	Red	.016	.860	.058	.316	.230	.160
	.110 by .020	19003-0027	19003-0029	19003-0028	Red	.012	.860	.058	.230	.230	.150
	.110 by .032	19003-0033	19003-0035	19003-0034	Red	.012	.860	.058	.230	.230	.150
14-16 (2.00-1.30)	.250 by .032	19003-0047	19003-0049	19003-0048	Blue	.016	.935	.083	.380	.260	.180
	.187 by .020	19003-0053	19003-0055	19003-0054	Blue	.016	.860	.083	.316	.260	.170
10-12 (5.00-3.30)	.250 by .032	19003-0059	19003-0061	19003-0060	Blue	.016	.860	.083	.316	.260	.170
10-12 (5.00-3.30)	.250 by .032	19005-0010	19005-0015	19005-0014	Yellow	.018	1.040	.150	.380	.275	.290

10	9	8	7	6	5	4	3	2																
LOOSE PIECE MATERIAL NUMBER	LOOSE PIECE ENGINEERING NUMBER	CONTINUOUS STRIP MATERIAL NUMBER	CONTINUOUS STRIP ENGINEERING NUMBER	MYLAR TAPE MATERIAL NUMBER	MYLAR TAPE ENGINEERING NUMBER	WIRE RANGE AWG	FITS MALE TAB SIZE	INSULATION COLOR	STOCK THICK.	"A" MAX.	"B" MIN.	"C" MAX.	"D" MWID	"E" MAX.	"H" ±.010									
F	190030071	M-2212	190030106	M-2212C	190030073	M-2212T	26-24	.250x.032	YELLOW	.016	.86	.030	.380	.075	.180	.560								
	190030064	M-2210	190030103	M-2210C	190030067	M-2210T	26-24	.187x.020	YELLOW	.016	.78	.030	.316	.075	.160	.600								
	190030068	M-2211	190030104	M-2211C	190030070	M-2211T	26-24	.187x.032	YELLOW	.016	.78	.030	.316	.075	.160	.600								
	190030001	AA-2201	190030105	AA-2201C	190030003	AA-2201T	22-18	.250x.032	RED	.016	.86	.058	.380	.135	.180	.560								
	190030036	AA-2213	190030109	AA-2213C	190030074	AA-2213T	22-18	.205x.020	RED	.016	.78	.058	.316	.135	.160	.600								
	190030038	AA-2214	190030110	AA-2214C	190030075	AA-2214T	22-18	.205x.032	RED	.016	.78	.058	.316	.135	.160	.600								
	190030011	AA-2202	190030107	AA-2202C	190030013	AA-2202T	22-18	.187x.020	RED	.016	.78	.058	.316	.135	.160	.600								
	190030017	AA-2203	190030108	AA-2203C	190030020	AA-2203T	22-18	.187x.032	RED	.016	.78	.058	.316	.135	.160	.600								
E	190030024	AA-2204	190030097	AA-2204C	190030026	AA-2204T	22-18	.110x.020	RED	.012	.78	.058	.230	.135	.150	.615								
	190030030	AA-2205	190030098	AA-2205C	190030032	AA-2205T	22-18	.110x.032	RED	.012	.78	.058	.230	.135	.150	.615								
	190030040	BB-2206	190030041	BB-2206C	190030042	BB-2206T	16-14	.250x.032	BLUE	.016	.86	.083	.380	.160	.180	.560								
	190030062	BB-2215	190030085	BB-2215C	190030077	BB-2215T	16-14	.205x.020	BLUE	.016	.78	.083	.316	.160	.170	.600								
	190030063	BB-2216	190030086	BB-2216C	190030078	BB-2216T	16-14	.205x.032	BLUE	.016	.78	.083	.316	.160	.170	.600								
	190030050	BB-2207	190030051	BB-2207C	190030052	BB-2207T	16-14	.187x.020	BLUE	.016	.78	.083	.316	.160	.170	.600								
	190030056	BB-2208	190030057	BB-2208C	190030058	BB-2208T	16-14	.187x.032	BLUE	.016	.78	.083	.316	.160	.170	.600								
D	196060002	19606-0002	196060001	19606-0001	196060003	19606-0003	12-10	.250x.032	YELLOW	.018	1.03	.120	.380	.240	.220	.508								



1. MATERIAL: TERMINAL: BRASS
 PLATING: ELECTRO-TIN
 FERRULE: BRASS
 PLATING: ELECTRO-TIN
 INSULATION: NYLON 6/6 94V-2.
 COLOR: SEE CHART
 2. MWID = MAXIMUM WIRE INSULATION DIAMETER

WAS CD-2905 EC NO. ETC2002-0251 DRWN: BRE 02/03/22 CHK: HEB 02/03/22 APPR: RWD 02/03/22	QUALITY SYMBOLS MAJOR $\blacktriangle = 0$ CRITICAL $\triangle = 0$	GENERAL TOLERANCES: (UNLESS SPECIFIED) mm INCH 4 PLACES ±0. ±. 3 PLACES ±0. ±. 2 PLACES ±0. ±. 1 PLACE ±0. ±. ANGULAR: ±1/2°	SCALE NO: NE DESIGN UNITS <input type="checkbox"/> mm <input checked="" type="checkbox"/> INCH THIRD ANGLE PROJECTION	DIMENSIONS: <input type="checkbox"/> mm <input checked="" type="checkbox"/> INCH <input type="checkbox"/> mm ONLY	SHT REV REVISE ON CAD ONLY
	DRAWN BY & DATE BRE 02/03/20	TITLE: INSULKRIMP FEMALE F.I.Q.D. STANDARD FLARE			
	CHECKED BY & DATE HEB 02/03/20	MOLEX INCORPORATED			
	APPROVED BY & DATE RWD 02/03/20	CAD FILENAME SD-19003-005 .DGN	MATERIAL NO. SEE CHART	DRAWING NO. SD-19003-005	SHEET NO. 1 OF 1

DRAFT WHERE APPLICABLE MUST REMAIN WITHIN DIMENSIONS

THIS DRAWING CONTAINS INFORMATION THAT IS PROPRIETARY TO MOLEX INCORPORATED AND SHOULD NOT BE USED WITHOUT WRITTEN PERMISSION.