

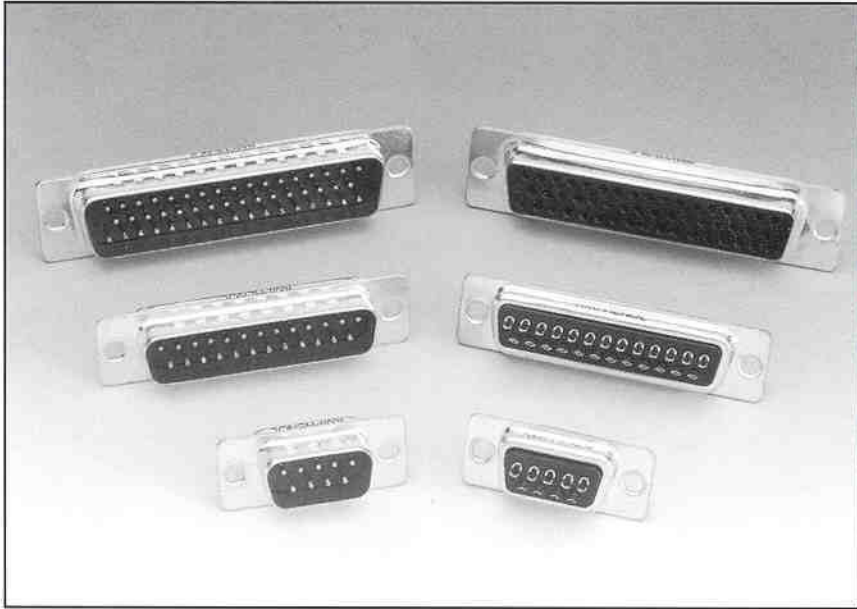
Distributed by:

JAMECO[®]
ELECTRONICS

www.Jameco.com ♦ 1-800-831-4242

The content and copyrights of the attached
material are the property of its owner.

Jameco Part Number 482741



Amphenol's ED series is the most economical member of the fixed contact D-subminiature family.

The ED connector features precision formed contacts with gold flash plating on the mating area. Amphenol quality without the expense of overplating.

SPECIFICATIONS:

Shell:
Tin-plated steel

Body:
Black glass-filled thermoplastic polyester,
UL 94 VO rated

Contacts:
Gold flash over 50 microinches nickel

Voltage Rating:
300V RMS TO 50 Hz

Current Rating:
7.5 Amps

Dielectric Withstanding Voltage:
1,000 V (min) RMS to 50 Hz

Contact Resistance:
5 Milliohms (max)

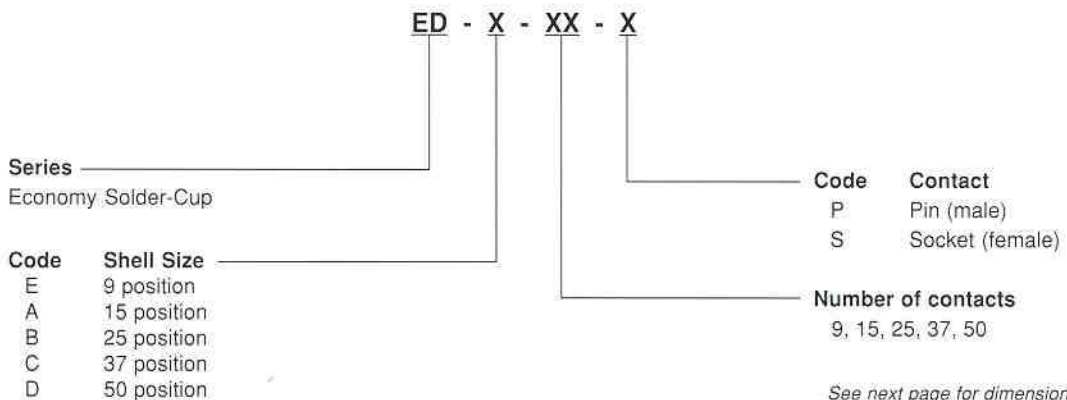
Insulation Resistance:
5,000 Megohms (min)

Temperature Range:
-55° C to +105° C

Humidity:
21 days at 105° F, 95% R.H.

Mechanical:
Insertion Force: 4.3 oz (min); 9.0 oz
(max) per contact.
Extraction Force: 1.4 oz (min)

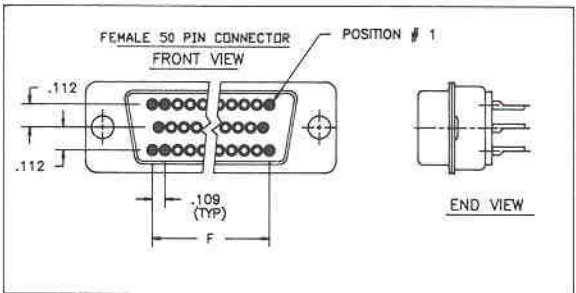
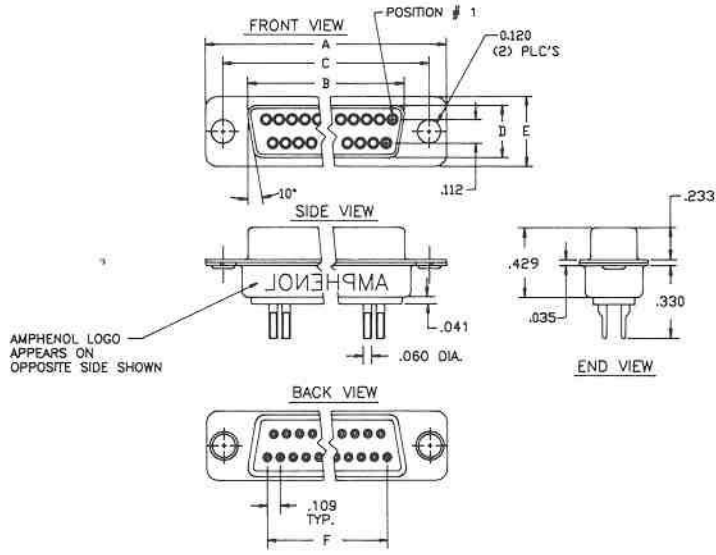
ORDERING INFORMATION:



See next page for dimensions.

DIMENSIONS:

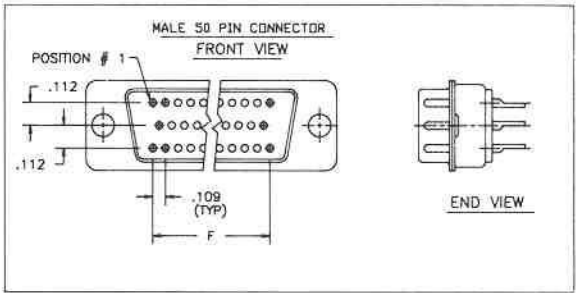
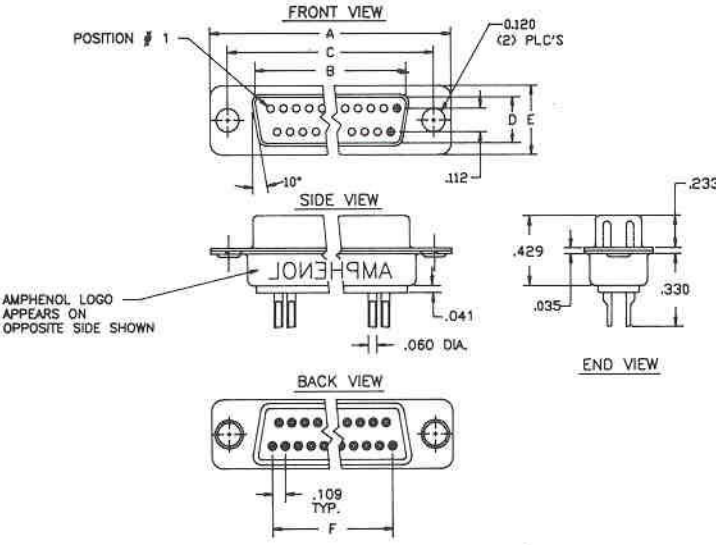
FEMALE



DIMENSIONS (FEMALE)

Shell Size	No. of Contacts	A	B	C	D	E	F
E	9	1.220	0.635	0.984	0.311	0.492	0.436
A	15	1.547	0.962	1.311	0.311	0.492	0.763
B	25	2.092	1.507	1.856	0.311	0.492	1.308
C	37	2.746	2.161	2.510	0.311	0.492	1.962
D	50	2.643	5.059	2.400	0.429	0.604	1.744

MALE



DIMENSIONS (MALE)

Shell Size	No. of Contacts	A	B	C	D	E	F
E	9	1.220	0.663	0.984	0.330	0.492	0.436
A	15	1.547	0.990	1.311	0.330	0.492	0.763
B	25	2.092	1.535	1.856	0.330	0.492	1.308
C	37	2.746	2.189	2.510	0.330	0.492	1.962
D	50	2.643	5.430	2.400	0.448	0.604	1.744