

Distributed by:

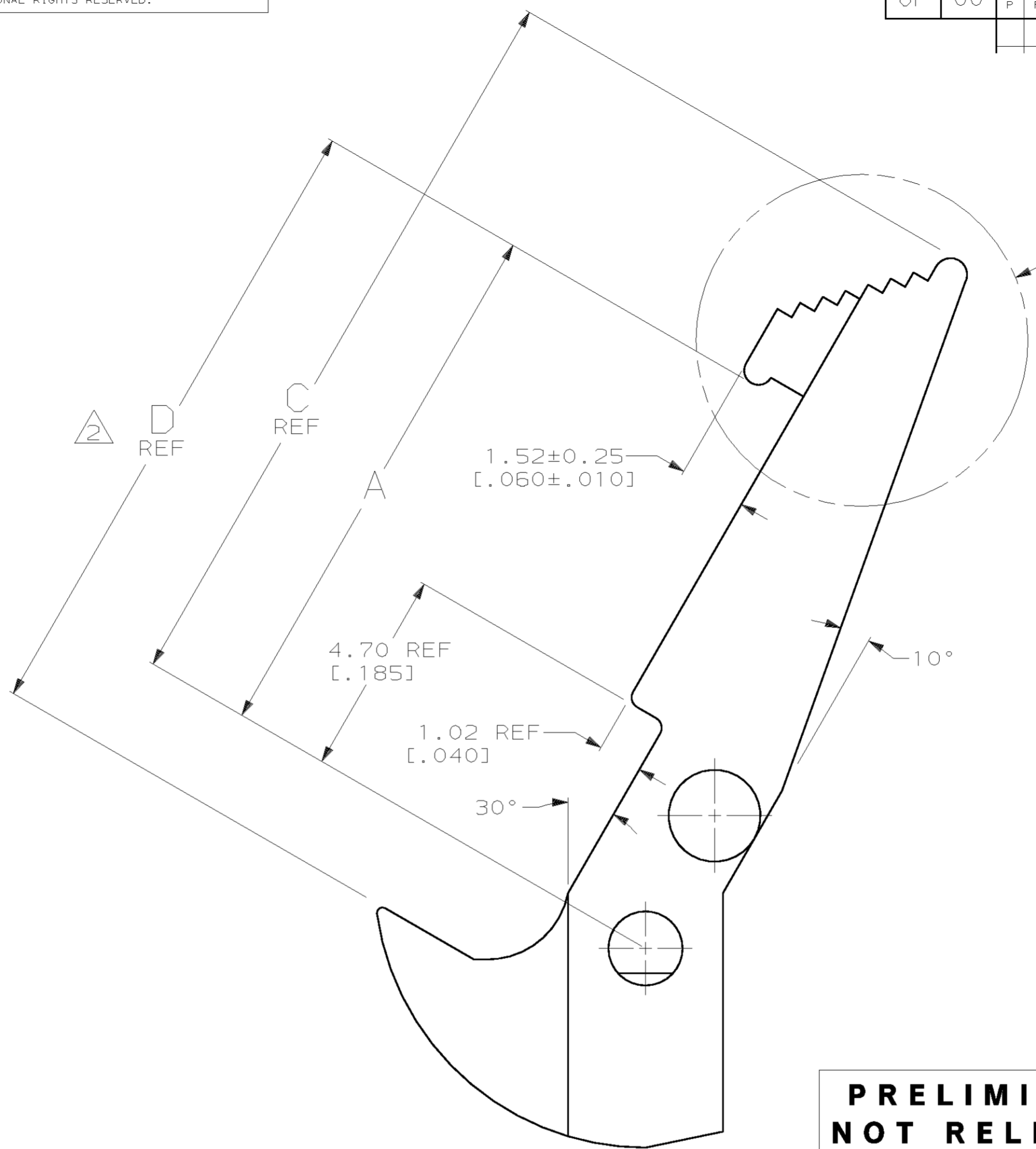
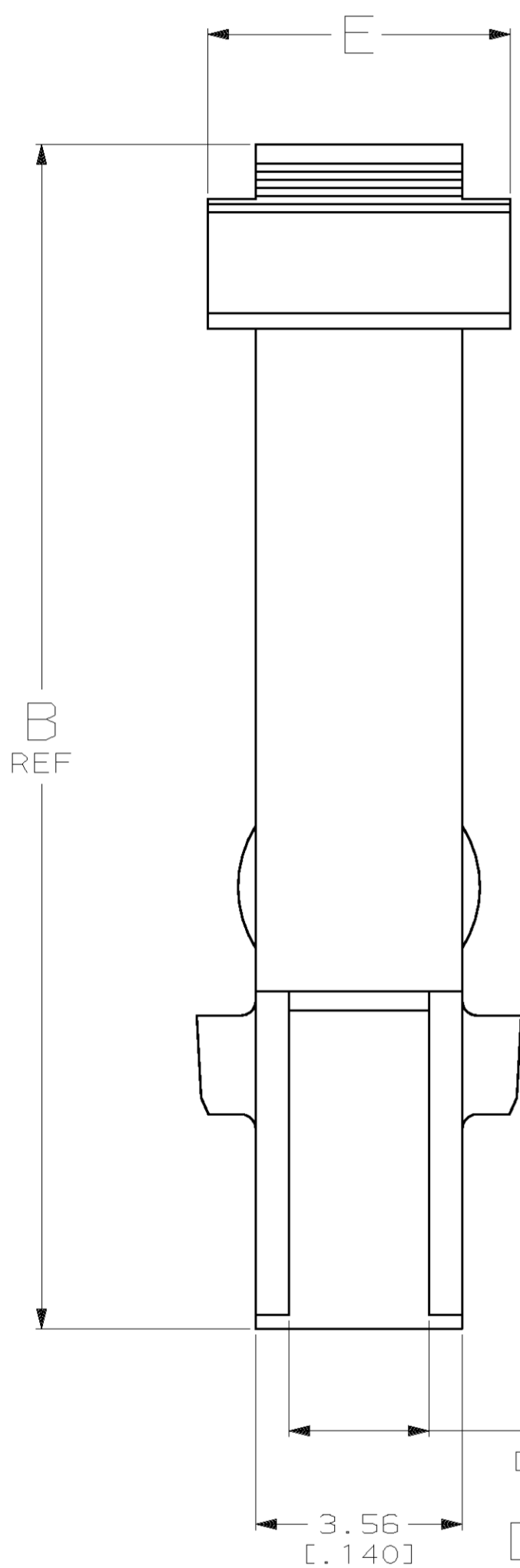
**JAMECO**<sup>®</sup>  
ELECTRONICS

**www.Jameco.com ♦ 1-800-831-4242**

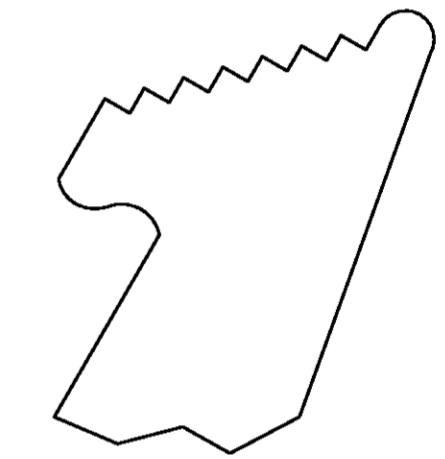
The content and copyrights of the attached  
material are the property of its owner.

Jameco Part Number 496026

LOC		DIST		REVISIONS				
GP	00	P	F	ZONE	LTR	DESCRIPTION	DATE	APPD
				G		REVISED PER EC 0513-0139-05	25MAY05	JG



SEE DETAIL F  
HANDLE AREA  
SEE TABLE



DETAIL F  
HANDLE AREA

**PRELIMINARY DESIGN REVISION  
NOT RELEASED FOR PRODUCTION**

2.34 REF  
[.092]

3.56  
[.140]

OBSOLETE

BLUE	AS SHOWN	5.21 [.205]	10.57 [.416]	13.18 [.519]	16.31 [.642]	8.38 [.330]	102312-5
BLACK	PER DETAIL F	3.56 [.140] REF	8.26 [.325]	10.74 [.423]	13.36 [.526]	6.07 [.239]	102312-3
BLACK	PER DETAIL F	3.56 [.140] REF	12.04 [.474]	14.53 [.572]	17.14 [.675]	9.86 [.388]	102312-2
BLACK	AS SHOWN	5.21 [.205]	10.57 [.416]	13.18 [.519]	16.31 [.642]	8.38 [.330]	102312-1
COLOR	HANDLE AREA	E	D	C	B	A	PART NO

- 1 TO BE USED WITH AMP-LATCH™ CONNECTOR WITH STANDARD COVER.
- 2 MATING RECEPTACLE HEIGHT.
- 3 NOT RELEASED, NOT PRODUCTION TOOLED.

DO NOT SCALE PRINT.  
UNLESS SPECIFIED  
DIMENSIONS IN mm [INCHES]  
TOLERANCES ON :  
2 PLC DEC ± 0.13 [.005]  
3 PLC DEC ± -  
ANGLES ± 1°

MATERIAL  
FLAME RETARDANT  
PBT, UL94V-0 RATED

FINISH  
-

DR 07/08/92  
D.GELTZ

CHK 7-10-92  
R.STONE

APPD 7-13-92  
R.KILE

APPD 7-15-92  
D.HOFFMAN

PRODUCT SPEC  
-

APPLICATION SPEC  
-

WEIGHT  
-

**AMP** AMP Incorporated  
Harrisburg, PA 17105-3608

NAME  
LATCH, UNIVERSAL HEADER,  
AMP-LATCH

SIZE CAGE CODE DRAWING NO  
C 00779 C=102312

SCALE 10:1 SHEET 1 OF 1

THIS DRAWING IS A CONTROLLED DOCUMENT FOR AMP INCORPORATED. IT IS SUBJECT TO CHANGE AND THE CONTROLLING ENGINEERING ORGANIZATION SHOULD BE CONTACTED FOR THE LATEST REVISION.