

Distributed by:

JAMECO[®]
ELECTRONICS

www.Jameco.com ♦ 1-800-831-4242

The content and copyrights of the attached
material are the property of its owner.

Jameco Part Number 513471

Keymodule

Cherry GmbH
Cherrystrasse
D-91275 Auerbach/Opf.
Phone: (0 96 43) 18 - 0
Hotline: (0 96 43) 18 - 2 06
Fax: (0 96 43) 18 - 15 45
Internet: www.cherry.de

800407
The manufacturer accepts
no liability for errors or
changes in specification.
Printed in Germany.
45392530
E, Juni 2002
3, Mün
© 2002 Cherry GmbH



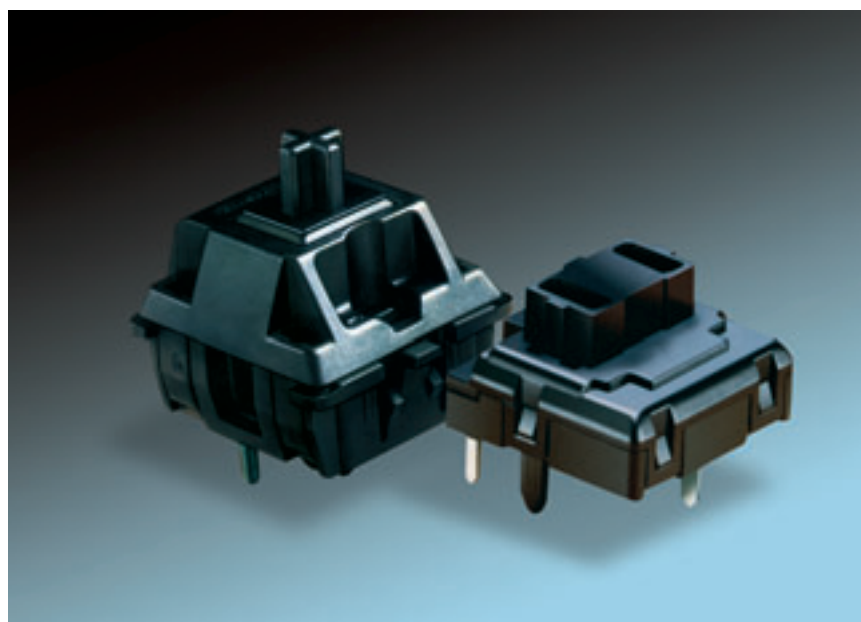
Contents

General Information	2
Technical Data	3
Keymodule ML	4
Keymodule MX	6

Keymodule

Cherry key modules are mechanical input elements with a single-gap make contact element. Low assembly height, pleasant feel and excellent contact reliability thanks to Gold-Crosspoint contact technology allow flexible designing of low-cost keypads and keyboards. Depending on the key cap, different lead spacings are also possible.

Very short bounce times, very pleasant feel and exceptionally high reliability and durability pave the way for a wide range of applications.



Technical Data

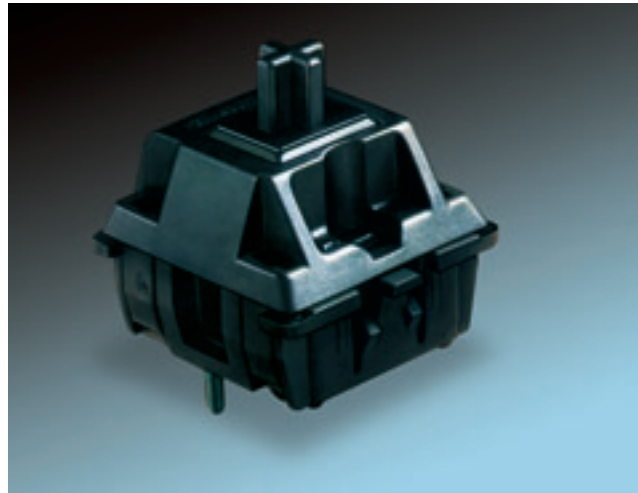
	Model ML	Model MX
Electrical Characteristics		
Switching voltage	12 V AC/DC	12 V AC/DC max, 2 V DC min
Switching current	10 mA AC/DC max, 10 uA DC min.	10 mA AC/DC max, 10uA DC min.
Contact resistance	≤ 200 mW (typically. 25 m)	≤ 200 mW (typically 25 m)
Capacity at 1kHz	≤ pF	≤ pF
Dielectric strength	500 V/50Hz	500 V/50Hz
Isolation resistance (new)	100 MΩ	100 MΩ
Durability at 5V, 1mA linear	–	50x10 ⁶ linear
Durability at 5V, 1mA pressure point	20x10 ⁶	50x10 ⁶ pressure point
Service life at 5V, 1mA latched pushbutton MCBF	–	0,5x10 ⁶ latched pushbutton 1x10 ⁶
Mechanical Characteristics		
Number of contacts	Single-gap make contact element	Single-gap make contact element
Action	Pressure point	Linear, pressure point, latching
Actuator travel	3.0 -0.5 mm	4.0 -0.4 mm Pulse / 4.2 ±0.3 mm latching
Pre-travel	1.5 ±0.5 mm	2 ±0.6 mm Pulse / 1.4 ±0.4 mm latching
Initial force	30 cN min	40 cN
Actuation force	45 ±20 cN	60 +20 cN linear and latching; 45 ±20 cN pressure point
Pressure point force	50 ±20 cN	55 ±20 cN
Bounce time during actuation with 0.4 m/s	≤5 ms	≤5 ms
Standard lead spacing	19.05 mm (16 mm min)	19.05 mm (16 mm min)
Fastening	Fixing pins in the printed circuit board	Snap fastening in frame or Fixing pins in the printed circuit board
Lighting (optional)	–	LED in red, green or yellow
Decoupling diode	–	optional
Wire jumper	–	optional
Materials		
Insulation materials	Thermoplastics (min UL 94 HB)	Thermoplastics UL listed
Spring	Stainless steel	Stainless steel
Contacts	AuAg 10	High-quality gold alloy
Other Characteristics		
Protection class	IP 40	IP 40
Operating temperature	-10 °C to +70 °C	-10° C to +70° C
Storage temperature	-40 °C to +70 °C	-40° C to +70° C
Humidity (without condensation)	5% to 95%	5% to 95%
Soldering capability	DIN IEC 68	DIN IEC 68
Soldering temperature/duration	260 °C / 5s	260 °C / 5s

Keymodule MX

Description

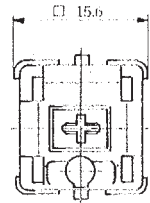
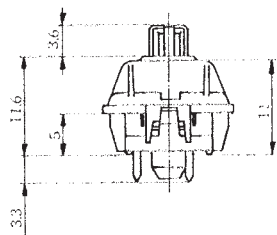
The construction of the key and the design of the relevant key caps fulfill ergonomic requirements for computer workplaces. Long durability thanks to Gold-Crosspoint contacts and high reliability for fast typing. With either integrated color LED decoupling diode or wire jumper.

MCBF = 1x10⁹

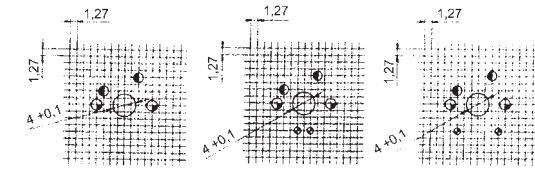


Tastenmodul MX

View of Keymodule

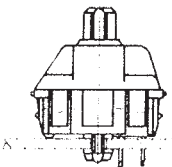


Layout of P.C.B.

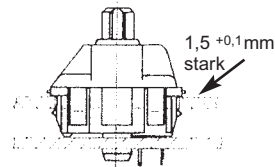


- Ø 1,7 -0,05 *
 - Ø 1,5 ± 0,05
 - Ø 1,7 +0,10
- * nur für Ausführung mit Fixierpin

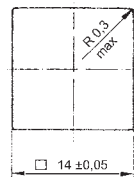
Keyswitch Assembly



with pins

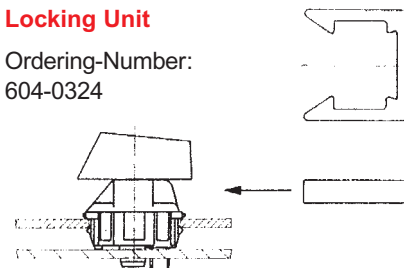


without pins



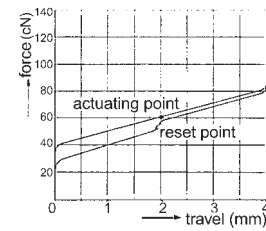
Locking Unit

Ordering-Number:
604-0324

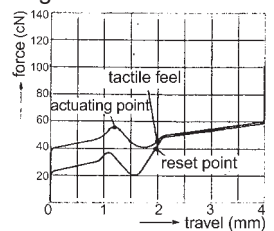


Force/Travel Diagram

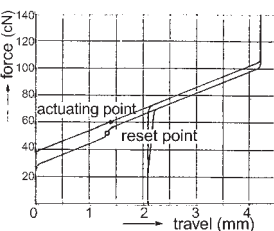
MX-linear actuation



MX with click tactile feel ergonomic



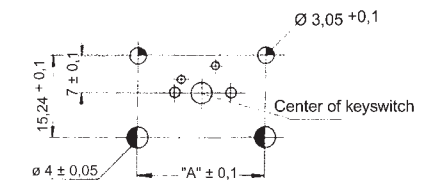
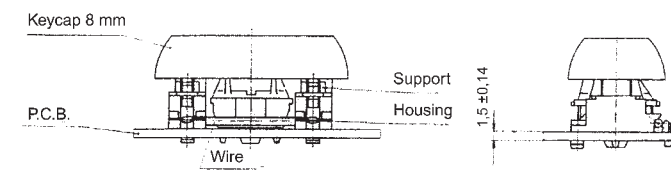
MX with alternate action



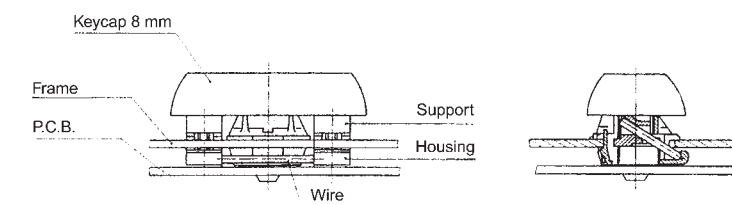
The special advantage of the MX key is the individual choice of pleasant feel.

Spacebar Mechanism

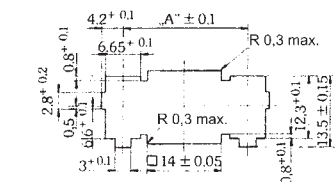
W/o frame



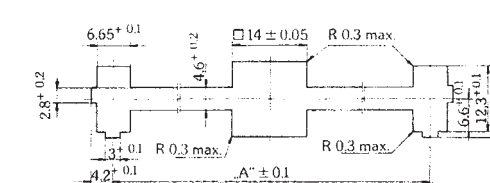
with frame



Cutout of frame for keycap sizes
1x2, 1x2,25, 1x2,75



Cutout of frame for keycap sizes
1x3, 1x7, 1x8, 1x9, 1x10



Size of keycap

	1x2	1x3	1x8
Size of keycap	1x2,25	1x3	1x8
Type of keycap	8 mm	8 mm	8 mm
"A" (in mm)	23,8	38,1	133,35
Part No. with frame	G99-0224	G99-0225	G99-0226
Part No. w/o frame	G99-0742	G99-0743	G99-0744

Ordering code:

① MX ② 1 ③ A - ④ 1 ⑤ 1 ⑥ N ⑦ N

① Series

- ② Contact material
- ③ Contact mounting
- ④ Actuation

- ⑤ Cap support
- ⑥ Mounting

Typ MX

- 1 = AuAg10 (max. 10mA, 12V)
- A = 1 contact making element
- 1 = Linear feel
- G = Soft tactile feel
- 3 = Click tactile
- 1 = Standard, straight for 8 mm cap
- N = Without LED, without diode
- R = Red LED, without diode
- G = Green LED, without diode
- Y = Yellow LED, without diode
- D = With diode, without LED
- J = With Jumper
- without LED or Diode
- N = Without pins (frame required)
- W = With Pins (no frame required)

The manufacturer accepts no liability for errors or non-availability, and reserves the right to change specifications without prior notice. Technical data relate to product specifications only. Features may differ from those described. Only drawings combined with product specifications shall be deemed binding.