

Distributed by:

JAMECO[®]
ELECTRONICS

www.Jameco.com ♦ 1-800-831-4242

The content and copyrights of the attached
material are the property of its owner.

Jameco Part Number 524331

Ultra-Fast Plus—Fully Insulated FASTON Receptacles and Tabs

Ultra-Fast Plus—Fully Insulated FASTON Receptacles

Material:

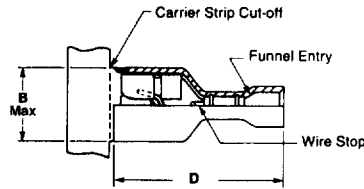
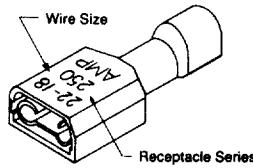
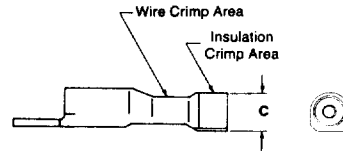
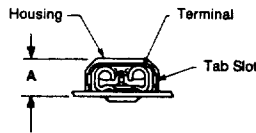
Housing—Nylon

Terminal—Tin plated, copper alloy

Color Code (Translucent)

Red—22-18 AWG

Blue—16-14 AWG



Description	Wire Range AWG	Ins. Dia. Range	Dimensions				Mating Tab	Terminal Base Material	Part Numbers	
			A	B	C	D			Strip	Loose Piece
.110/.125 Series	22-18	.060-.120 1.52-3.05	.160 4.06	.275 6.99	.167 4.24	.735 18.67	.032 x .110/.125	Brass	2-520979-2	—
							0.81 x 2.79/3.18			
.187 Series	22-18	.060-.135 1.52-3.43	.165 4.24	.336 8.53	.200 5.08	.855 21.72	.020 x .187	Brass	2-520401-2	2-520409-2
							0.51 x 4.75			
	16-14	.090-.160 2.29-4.06	.185 4.70	.336 8.53	.225 5.72	.855 21.72	.020 x .187	Brass	3-520402-2	3-520410-2
							0.51 x 4.75			
.250 Series	22-18	.060-.135 1.52-3.43	.195 4.95	.409 10.39	.200 5.08	.855 21.72	.032 x .250	Brass	2-520405-2	2-520407-2
							0.81 x 6.35			
16-14	.090-.160 2.29-4.06	.195 4.95	.409 10.39	.225 5.72	.855 21.72	.032 x .250	0.81 x 6.35	Brass	3-520406-2	3-520408-2

Ultra-Fast Plus—Fully Insulated FASTON Tabs

Material:

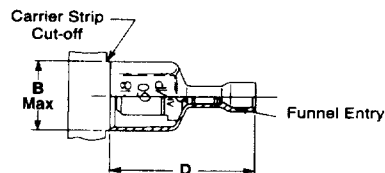
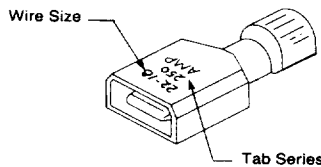
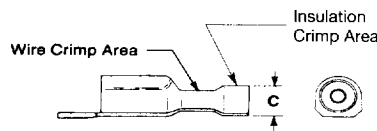
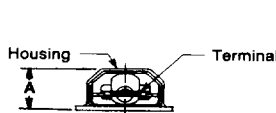
Housing—Nylon Type 6/6

Terminal—Tin plated, copper alloy

Color Code (Translucent)

Red—22-18 AWG

Blue—16-14 AWG



Description	Wire Range AWG	Ins. Dia. Range	Dimensions				Mating Tab	Terminal Base Material	Part Numbers	
			A	B	C	D			Strip	Loose Piece
.250 Series	22-18	.060-.135 1.52-3.43	.290 7.37	.522 13.26	.205 5.21	.855 21.72	.032 x .250	Brass	2-521055-2	—
							0.81 x 6.35			
16-14	.090-.160 2.29-4.06	.290 7.37	.522 13.26	.230 5.84	.855 21.72	.032 x .250	0.81 x 6.35	Brass	3-521057-2	—

For complete product information, order Catalog 82004