

Distributed by:

**JAMECO**<sup>®</sup>  
ELECTRONICS

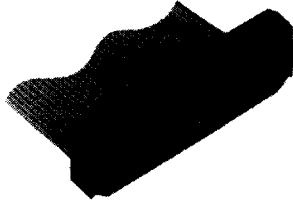
**www.Jameco.com ♦ 1-800-831-4242**

The content and copyrights of the attached  
material are the property of its owner.

Jameco Part Number 525325

### Novo Receptacles, Center & Military Polarized\* .100 x .100 [2.54 x 2.54] Centers

#### Housing Assembly with Cover (Preassembled) and Strain Relief (Optional)



Contacts mate with .025 [0.64] sq. or round pins with .245 [6.22] max. and .175 [4.45] min. lengths.

#### Material and Finish:

**Housing, Cover & Strain Relief**—94V-0 rated thermoplastic, black

**Contacts**—Phosphor bronze, duplex plated

#### Related Product Data:

**Electrical Characteristics**—page 4007

**Mateable Connectors:**

**Mateable Pin Headers:**

**Universal**—pages 4025 thru 4031

**High Temperature**—pages 4023, 4024

**Low Profile**—pages 4013 thru 4022

#### Accessories:

**Pull Tab** — Page 4011

**Strain Relief** — Page 4011

**Keying Plug** — Page 4012

#### Application Tooling:

R-CAM 4 Cable Assembly Machine—Page 13019

R-CAM 3A Ribbon Cable Assembly Machine—Page 13019

R-CAM 2A Ribbon Cable Assembly Machine—Page 13019

Manual Arbor Tool —

**Part Number** 91085-2—Page 13015

Pneumatic Auto-Cycle Tool —

**Part Number** 91112-3—Page 13016

#### Technical Documents:

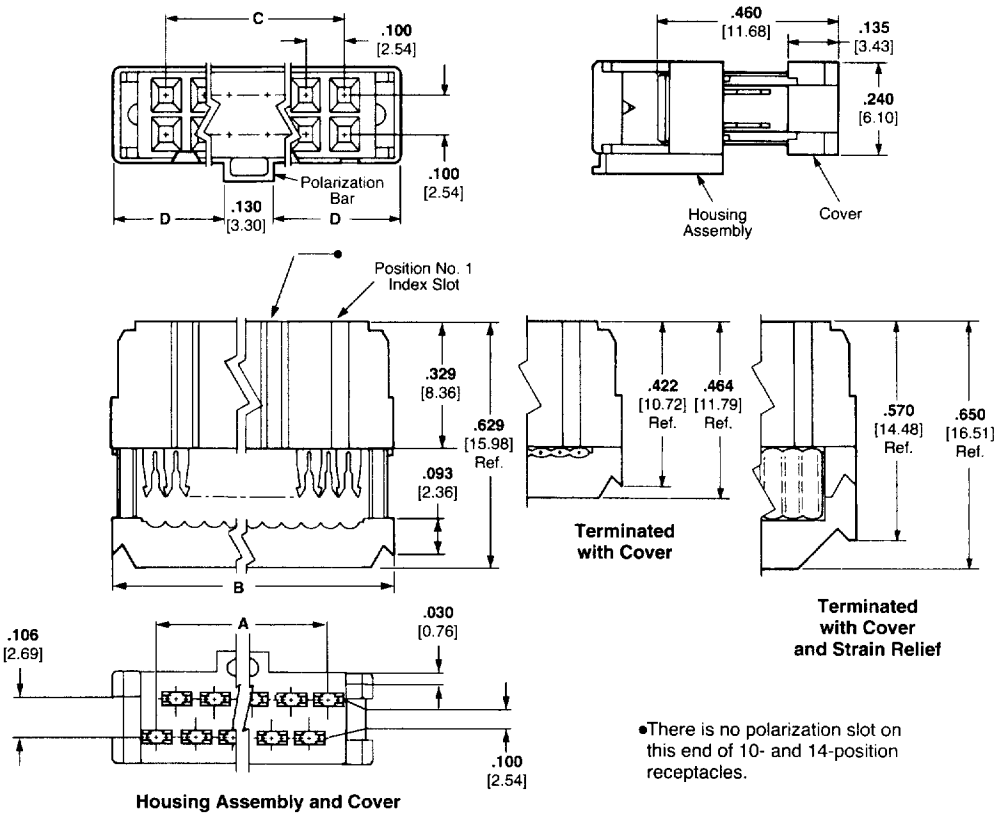
#### Product Specifications

108-40000 Novo and Novo Stackable Receptacles, 108-40004 Ribbon Cable, PVC Insulated

#### Application Specification

114-40005 Ribbon Cable Connectors

\*These receptacles can be used in applications requiring center polarization.



•There is no polarization slot on this end of 10- and 14-position receptacles.

No. of Positions	Dimensions				Contact Plating	Strain Relief Part Numbers	Receptacle (Preassembled)
	A	B	C	D			
10	.450	.680	.400	.275	Duplex <sup>1</sup>	499252-5	746285-1
	11.43	17.27	10.16	6.99	Duplex <sup>2</sup>	499252-5	746288-1
14	.650	.880	.600	.375	Duplex <sup>1</sup>	499252-9	746285-2
	16.51	22.35	15.24	9.53	Duplex <sup>2</sup>	499252-9	746288-2
16	.750	.980	.700	.425	Duplex <sup>1</sup>	499252-8	746285-3
	19.05	24.89	17.78	10.80	Duplex <sup>2</sup>	499252-8	746288-3
20	.950	1.180	.900	.525	Duplex <sup>1</sup>	499252-2	746285-4
	24.13	29.97	22.86	13.34	Duplex <sup>2</sup>	499252-2	746288-4
24	1.150	1.380	1.100	.625	Duplex <sup>1</sup>	1-499252-0	746285-5
	29.21	35.05	27.94	15.88	Duplex <sup>2</sup>	1-499252-0	746288-5
26	1.250	1.480	1.200	.675	Duplex <sup>1</sup>	499252-3	746285-6
	31.75	37.59	30.48	17.15	Duplex <sup>2</sup>	499252-3	746288-6
30	1.450	1.680	1.400	.775	Duplex <sup>1</sup>	1-499252-2	746285-7
	36.83	42.67	35.56	19.69	Duplex <sup>2</sup>	1-499252-2	746288-7
34*	1.650	1.880	1.600	.875	Duplex <sup>1</sup>	499252-6	746285-8
	41.91	47.75	40.64	22.23	Duplex <sup>2</sup>	499252-6	746288-8
40*	1.950	2.180	1.900	1.025	Duplex <sup>1</sup>	499252-1	746285-9
	49.53	55.37	48.26	26.04	Duplex <sup>2</sup>	499252-1	746288-9
50*	2.450	2.680	2.400	1.275	Duplex <sup>1</sup>	499252-4	1-746285-0
	62.23	68.07	60.96	32.39	Duplex <sup>2</sup>	499252-4	1-746288-0
60	2.950	3.180	2.900	1.525	Duplex <sup>1</sup>	499252-7	1-746285-1
	74.93	80.77	73.66	38.74	Duplex <sup>2</sup>	499252-7	1-746288-1
64	3.150	3.380	3.100	1.625	Duplex <sup>1</sup>	1-499252-3	1-746285-2
	80.01	85.85	78.74	41.28	Duplex <sup>2</sup>	1-499252-3	1-746288-2

<sup>1</sup>.000015 [0.00038] gold on post/pin mating end, .000100-.000200 [0.00254-0.00508] bright tin-lead on termination end, with entire contact underplated .000050 [0.00127] nickel.

<sup>2</sup>.000030 [0.00076] gold on post/pin mating end, .000100-.000200 [0.00254-0.00508] bright tin-lead on termination end, with entire contact underplated .000050 [0.00127] nickel.

**Note:** These receptacles include a housing assembly and cover (preassembled). Strain reliefs may be purchased separately using the component part nos. listed above and on page 4011.