

Distributed by:

**JAMECO**<sup>®</sup>  
ELECTRONICS

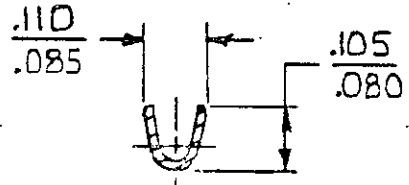
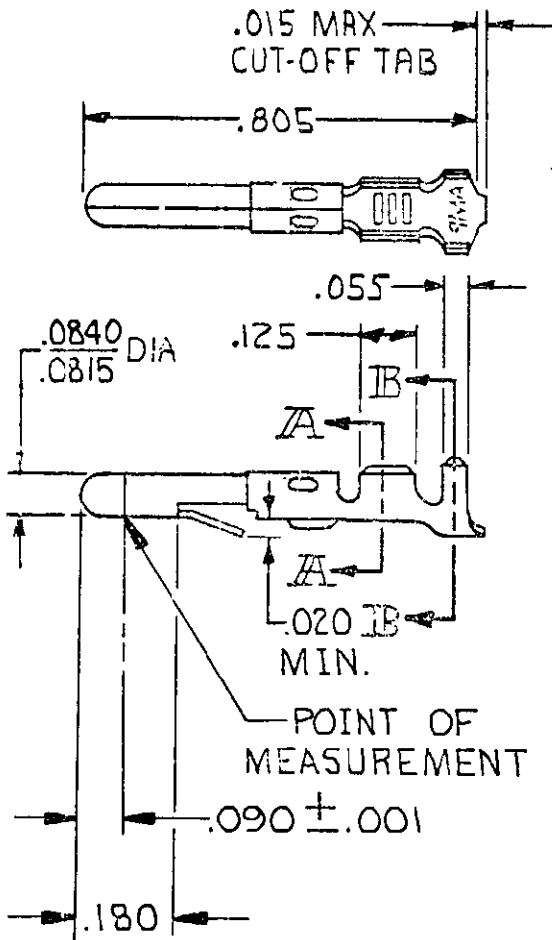
**www.Jameco.com ♦ 1-800-831-4242**

The content and copyrights of the attached  
material are the property of its owner.

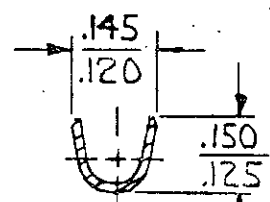
Jameco Part Number 526133

© COPYRIGHT 1965 BY AMP INCORPORATED, HARRISBURG, PA. ALL INTERNATIONAL RIGHTS RESERVED. AMP INCORPORATED PRODUCTS COVERED BY U.S. AND FOREIGN PATENTS AND /OR PATENTS PENDING.

REVISIONS				
LTR	DESCRIPTION	DATE	APPROVED	P F
N	REV PER CM-1734	8-17-88	<del>PKC</del> RS	
P	REVISED PER CM-3285	2-12-91	<del>PKC</del> RS	
R	OBSOLETE -2 PER CM 2708	1-11-93	<del>TB</del> RS	
S	REV PER EC 0730-0142-94	8-15-94	<del>RV</del> RS	



SECT. A-A



SECT. B-B

1 .000030 GOLD INSIDE WIRE BARREL & ON TIP OF PIN; REMAINDER OF CONTACT IS NICKEL PLATED.

2 .000050 NICKEL OVER ENTIRE CONTACT WITH .000030 GOLD OVER MATING AREA.

GOLD	2	.012 PH. BRZ	60613 -6
GOLD	1	BRASS	-5
PRE-TIN		PH. BRZ	-4
PRE-TIN		.012 BRASS	60618-1
FINISH		MATERIAL	PART NO

UNLESS OTHERWISE SPECIFIED DIMENSIONS ARE IN INCHES. TOLERANCES ON: DECIMALS ±.015 ANGLES ±

CONTRACT NO  
DR M. FEHER 11-26-79  
CHK *D. Heide* 1/4/80



MATERIAL  
SEE TABLE

APPD *M. Heide* 1-7-80  
APPD

NAME  
PIN, LOOSE PIECE,  
COMMERCIAL MATE-N-LOK

FINISH  
SEE TABLE

INSULATION DIA .100 MAX  
WIRE RANGE 24-18 AWG.

SIZE A  
CODE IDENT NO 00779  
DRAWING NO 60618  
SCALE SHEET