

ACCESSORIES (Cont.)

Chem



Anti-Static Applicators

These static-dissipative swabs are designed to attract dust and contaminants for easy cleaning while reducing static electricity. 6" Applicator with Anti-Static polyolefin handle. Head size 3/16" D x 11/16" L.

Part No. 19-754 Package of 50



Foam Applicators

6" Foam-tip applicator on polypropylene shaft. Head size 3/16" D x 11/16" L.

Part No. 19-753 Package of 50



Part No. 19-755/19-756

Part No. 19-759

Part No. 19-758

Cotton Applicators

6" Pointed cotton-tip applicator on wooden shaft. Head size @.105" D, tapering to .020" Dia.

Part No. 19-755

6" Single cotton-tip applicator on wood shaft. Package of 100.

Part No. 19-756

6" Pointed cotton-tip applicator on wood shaft. Package of 100.

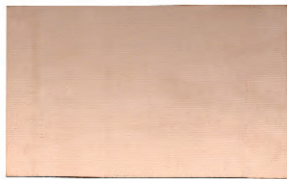
Part No. 19-758

3" Cotton-tip applicator on wood Shaft. Package of 100.

Part No. 19-759

6" Double-tipped cotton applicator. Package of 100.

CIRCUIT BOARDS



Bare Copper Circuit Boards

One ounce copper (0.0014") on base of either FR-4 (G-10) fiberglass or CEM-1 type epoxy reinforced board, 1/16" thick.

Copper on One Side Only:

Part No. 22-250 3" x 5"

Part No. 22-260 4" x 6"

Part No. 22-261 6" x 6"

Part No. 22-263 6" x 9"

Part No. 22-264 8" x 10"

Part No. 22-268 11" x 14"

Assortment of 4 one sided boards:

Part No. 22-272 [1] 2" x 4-1/2",
[1] 3" x 4-1/2",
[2] 2-1/4" x 3"

Copper on Both Sides:



Part No. 22-267 6" x 9"

Military Specification Number:
MIL-S13949H CF



Positive Pre-Sensitized Phenolic Circuit Boards

Made of 1.5 mm (1/16") thick phenolic base with one ounce (0.0014") copper. Coated with POSITIVE photo etch resist. Use with GC Developer, Part No. 22-225 or 22-226 concentrate. Mix at a ratio of 9 parts water to 1 part concentrate. Dielectric constant at 1 MHz=5.3.

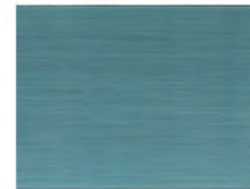
Copper on One Side Only:

Part No. 21-166 6" x 6"

Part No. 21-169 6" x 9"

Part No. 21-1710 7" x 10"

Part No. 21-1212 12" x 12"



Positive Pre-Sensitized Circuit Boards

1 oz. copper (0.0014") on a 1/16" (UL 94V-O) epoxy-glass FR-4 board. New high quality positive pre-sensitized PC boards are double protected from light and handling damage. The peel-off coating protects the board while handling or cutting prior to exposure. Can be exposed with common fluorescent lamp. GC makes it easy for anyone to make a professional looking board. Use with GC Developer Part Nos. 22-225 or 22-226 mixed 1 to 9 with water. Dielectric constant at MHz=5.4". Meets Fed. Spec.: S-10941-1.

Copper on Both Sides:

Part No. 21-339
3" x 4"

Part No. 21-350
6" x 6"

Part No. 21-353
6" x 9"

Part No. 21-357
12" x 12"

Copper on One Side Only:

Part No. 21-330
2" x 4"

Part No. 21-332
3" x 4"

Part No. 21-243
3" x 6"

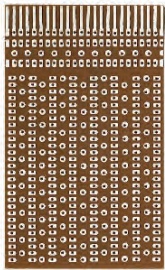
Part No. 21-334
4" x 6"

Part No. 21-336
6" x 6"

Part No. 21-338
6" x 9"

Part No. 21-247
7" x 10"

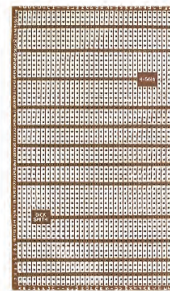
Part No. 21-252
12" x 12"



Plug-In IC Phenolic Prototype Board

IC's plug directly into board. 0.1" spacing accepts 14 pin or 16 pin IC's, up to 20 pin IC's. Silver plated lands with 24-way card edge connector plug on one end. Made of tough phenolic. 0.1" centers x 2-3/8" wide x 4" long x 1/16" thick, .035" holes.

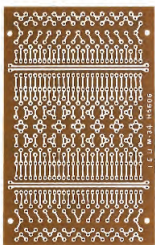
Part No. 22-500



Versa Strip Phenolic Prototype Board

Alpha-numerical indexing. Silver-plated land patterns. Predetermined short tracks for multi IC work. 0.1" centers x 3-1/2" wide x 6" long x 1/16" thick, .035" holes.

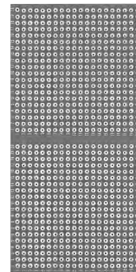
Part No. 22-502



Export Design Phenolic Prototype Board

Accommodates all types of IC's, transistor packages and passive parts. Lands and buss bars are tin-plated. 0.1" centers x 3-1/8" wide x 5-1/16" long x 1/16" thick.

Part No. 22-504

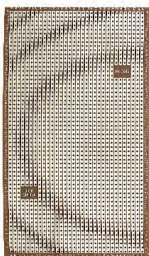


Experimenter's Phenolic Prototype Board

Save time and money with ready-to-use printed circuit boards. Excellent for use in prototype building, experimenting, hobby or science projects and kit building. Made of tough phenolic with .03" punched holes on 0.150" centers. Choice of single or quad land pattern. 3-3/8" wide x 6-3/4" long x 1/16" thick.

Part No. 22-510 Quad Land Pattern

Part No. 22-512 Single Land Pattern

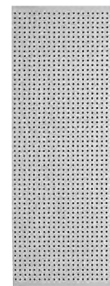


Printed Strip Phenolic Prototype Board



Alpha-numerical indexing. Tin-plated land patterns for positive pin identification. 0.1" centers x 3-1/2" wide x 6" long x 1/16" thick, .035" holes.

Part No. 22-506



Perforated Bare Phenolic Prototype Boards

Ideal for prototypes, breadboards, hobby or science projects. Made of tough phenolic with punched holes. Boards are bare phenolic—no copper clad.

Part No. 22-514 0.042" holes; 0.100" spacing
2-1/4" wide x 6" long x 1/16" thick

Part No. 22-516 4-1/2" wide x 6" long x 1/16" thick

Part No. 22-518 0.093" holes; 0.265" spacing



Experimenter's Phenolic Prototype Board



Ready-to-use copper plated printed circuit board has 550 solder tie-points, 94 five-point terminals and two 40-point buss strips on 0.3" centers. Phenolic board has pre-punched holes, mounting holes. 2" wide x 6" long x 1/16" thick.

Part No. 22-508