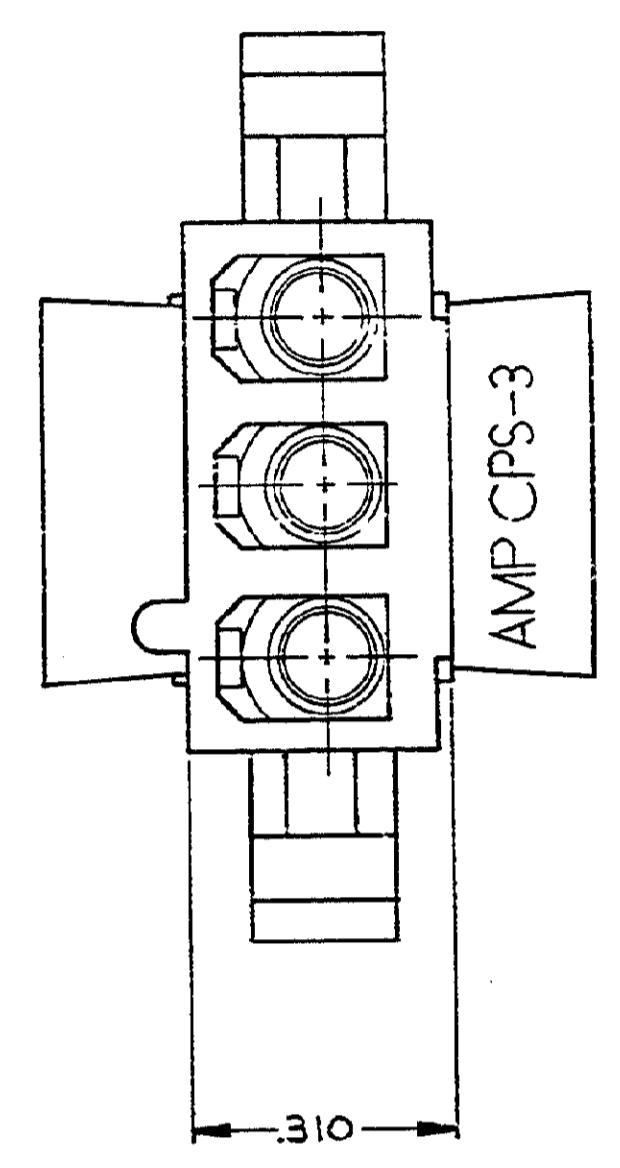
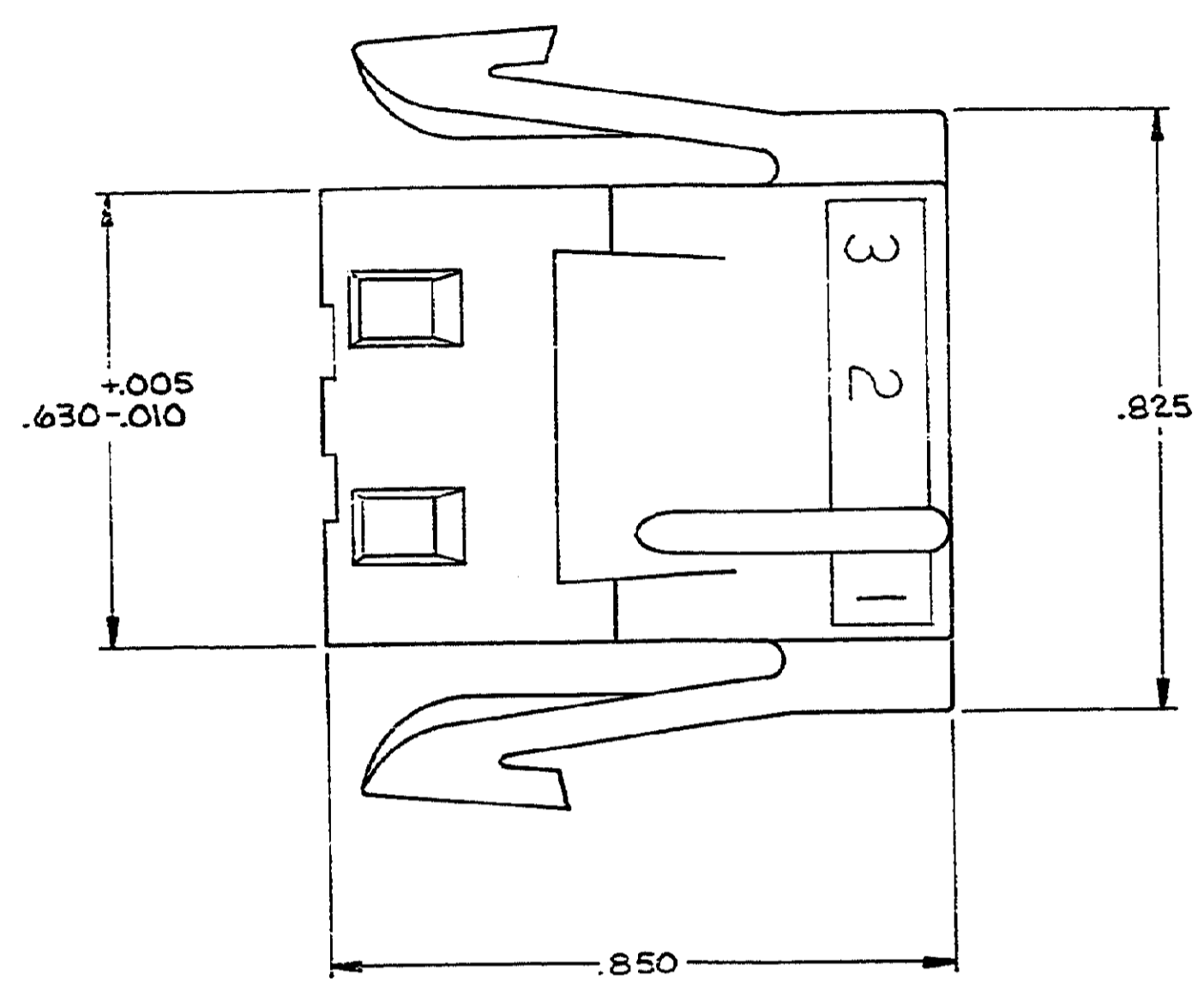
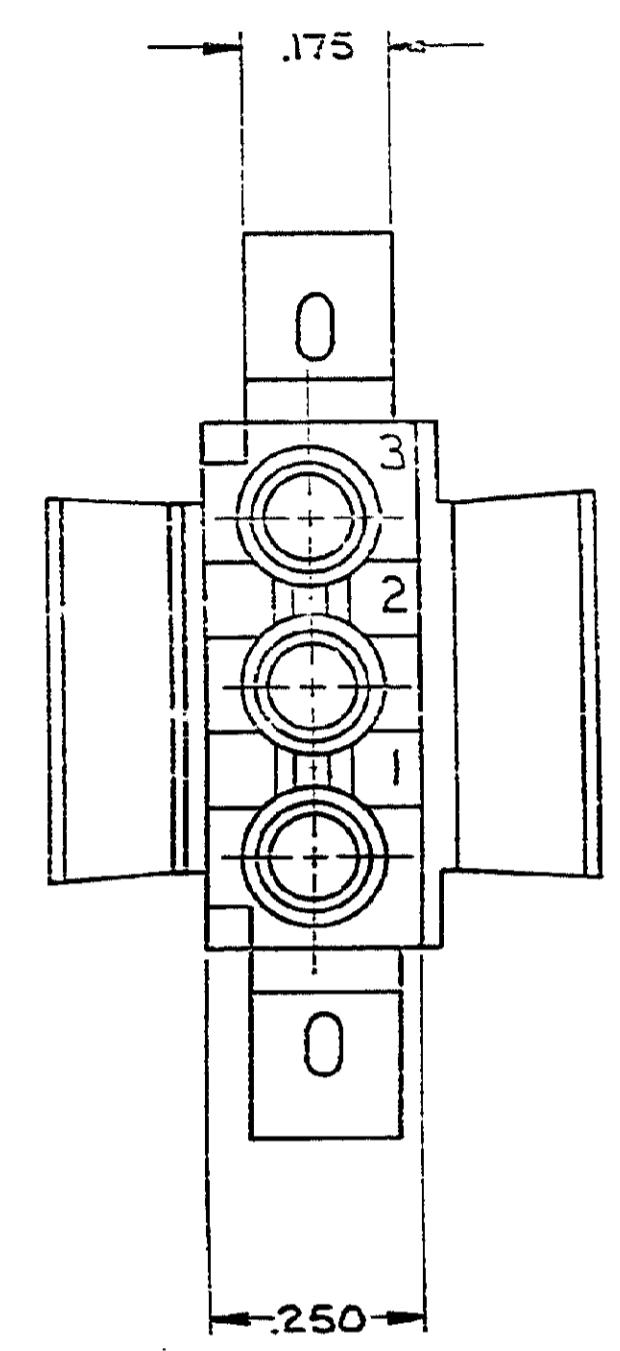
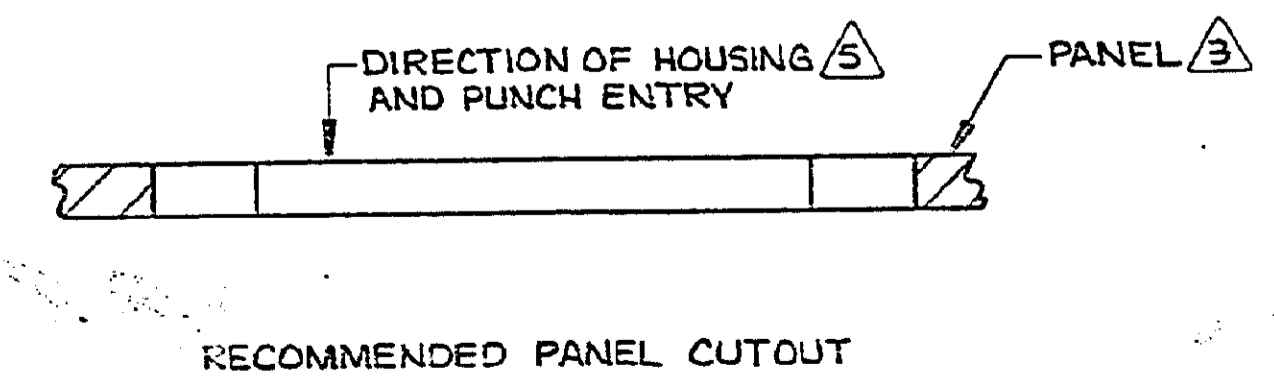
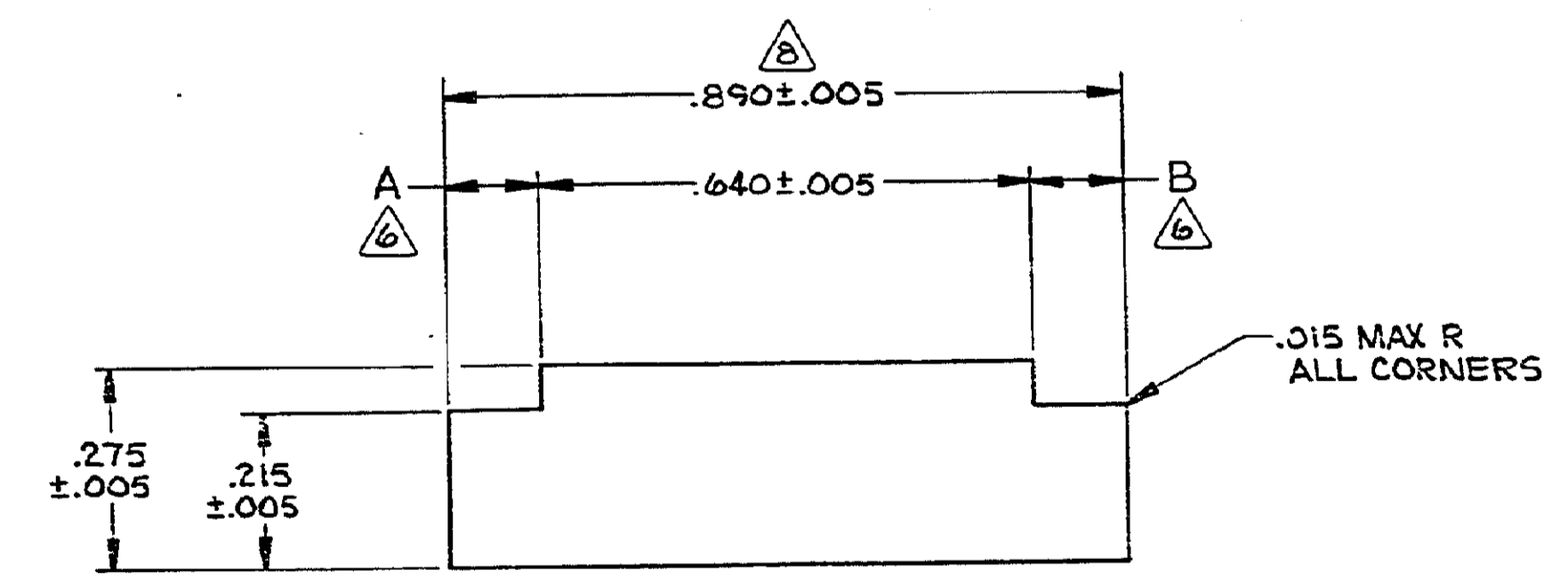


REVISIONS				LOG LIST	
REV	ZONE	TR	DESCRIPTION	DATE	APPROVED
U1			REVISED PER ECO-11-005294	11APR11	HMR



1. MATES WITH CAP PART NUMBER 480305.
2. ACCEPTS MATE-N-LOK SOCKET CONTACTS.
3. RECOMMENDED PANEL THICKNESS .025-.065.
4. BOTH LOCKING LEGS TO BE SQUEEZED TOGETHER AND HOUSING TO BE INSERTED "STRAIGHT-IN" AS OPPOSED TO A ROCKING MANNER OF INSERTION.
5. PANEL MUST BE PUNCHED SO THAT THE HOUSING ENTERS THE PANEL IN THE SAME DIRECTION AS THE PUNCH.
6. DIMENSIONS A AND B TO BE EQUAL WITHIN .005.
7. PANEL MUST NOT HAVE ANY MATERIAL (PAINT, PORCELAIN, ETC.) APPLIED IN THE MOUNTING HOLE AREA THAT WOULD DECREASE RETENTION OF THE HOUSING IN THE PANEL.
8. IF NOTES 5 AND/OR 7 ARE NOT COMPLIED WITH, THE .890 DIMENSION SHOULD BE REDUCED TO .880 TO ASSURE PROPER HOUSING RETENTION IN THE PANEL.



UNLESS OTHERWISE SPECIFIED DIMENSIONS ARE IN INCHES. TOLERANCES ON: DECIMALS ± .010 ANGLES =		CONTRACT NO.		NATURAL		NYLON, UL94V-2		1-480304-0	
MATERIAL		DR <i>White</i> 5-30-86		COLOR		MATERIAL		PART NO.	
FINISH		CHK <i>R. Sherry</i> 6-3-86		<b>STE</b> TE Connectivity NAME <b>PLUG, 3 CIRCUIT, MATE-N-LOK™</b>					
		APPD <i>M. Sherry</i> 6-3-86							
		DESIGN APPD		SIZE	FSCM NO.	DRAWING NO.			
		OTHER APPD		D	00779	480304			
				SCALE 5:1		SHEET 1 OF 1			