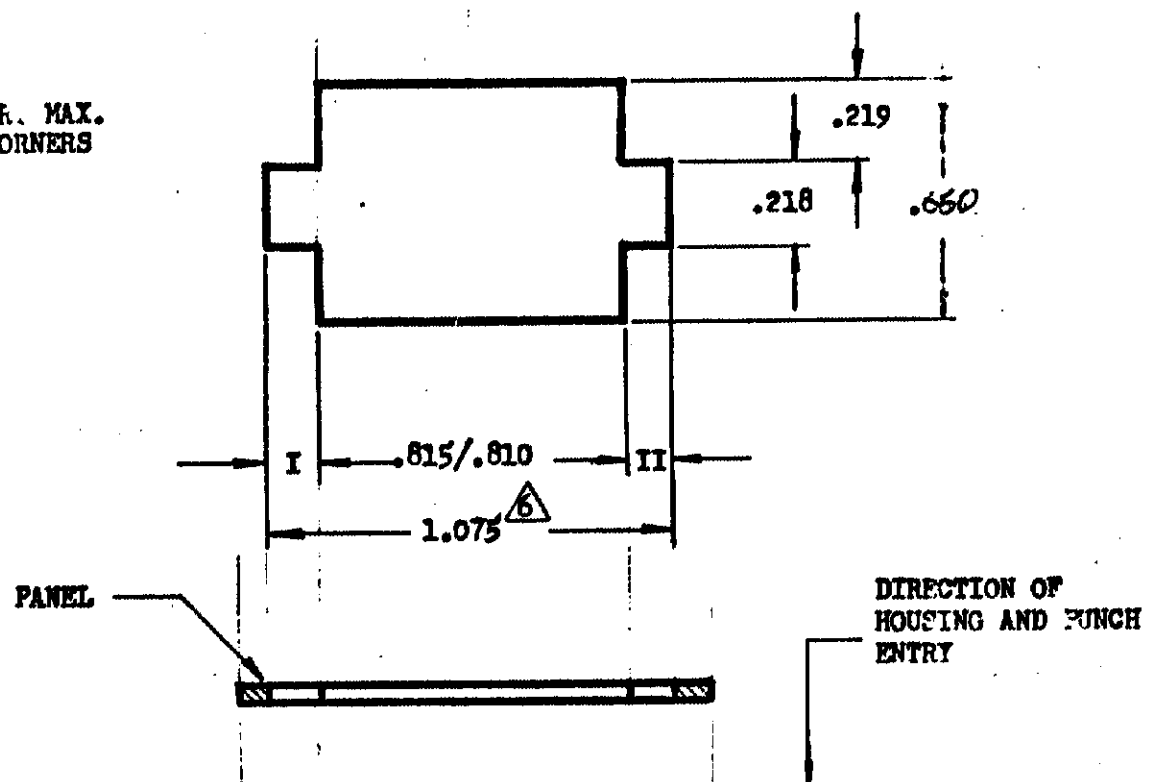




.015 R. MAX.  
ALL CORNERS



- NOTE: 1. Recommended panel thickness .025-.065.
2. Both locking legs to be squeezed together and housing to be inserted straight-in, as opposed to a rocking manner of insertion.
3. The panel must be punched so that the housing enters the panel in the same direction as the punch.
4. Dimensions I and II to be equal within .005.
5. Panel must not have any material (paint, porcelain, etc.) applied in the mounting hole area that would decrease retention of the housing in the panel.
- △ If Notes 3 and/or 5 are not complied with, the 1.075 dimension should be reduced to 1.055 to assure proper housing retention in the panel.

DIMENSIONS IN INCHES. DO NOT SCALE PRINT.

PRINT DIST  
53

				©1972 BY AMP INCORPORATED. ALL RIGHTS RESERVED. AMP PRODUCTS COVERED BY PATENTS AND/OR PATENTS PENDING.		<b>CUSTOMER COPY REFERENCE ONLY</b>	
				MATERIAL AND FINISH #		AMP INCORPORATED HARRISBURG, PENNA.	
				WIRE — RANGE — INSULATION # — #		CLASS #	
				TOLERANCE EXCEPT AS NOTED ± .005 E 1" 0'		SCALE 2-1	
LTR	REVISION RECORD	ECN	DR CHK	DATE	L' CM	NO A	REV P
DR DAYTON HOLMES 7-26-72				DE			
CHK THUMBLEE 7-26-72				APP THUMBLEE 7-26-72			
NAME RECOMMENDED MOUNTING INFORMATION 9 CIRCUIT MATE-N-LOK™ PANEL MOUNT PLUG					NO 480274		