

Distributed by:

JAMECO[®]
ELECTRONICS

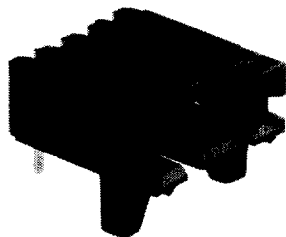
www.Jameco.com ♦ 1-800-831-4242

The content and copyrights of the attached
material are the property of its owner.

Jameco Part Number 738291

MTE Headers, Shrouded Latching, Single-Row .100 [2.54] Centerline

.025 [0.64] Square Right-Angle Post



Material and Finish:

Housing—Black thermoplastic, 34V-0 rated

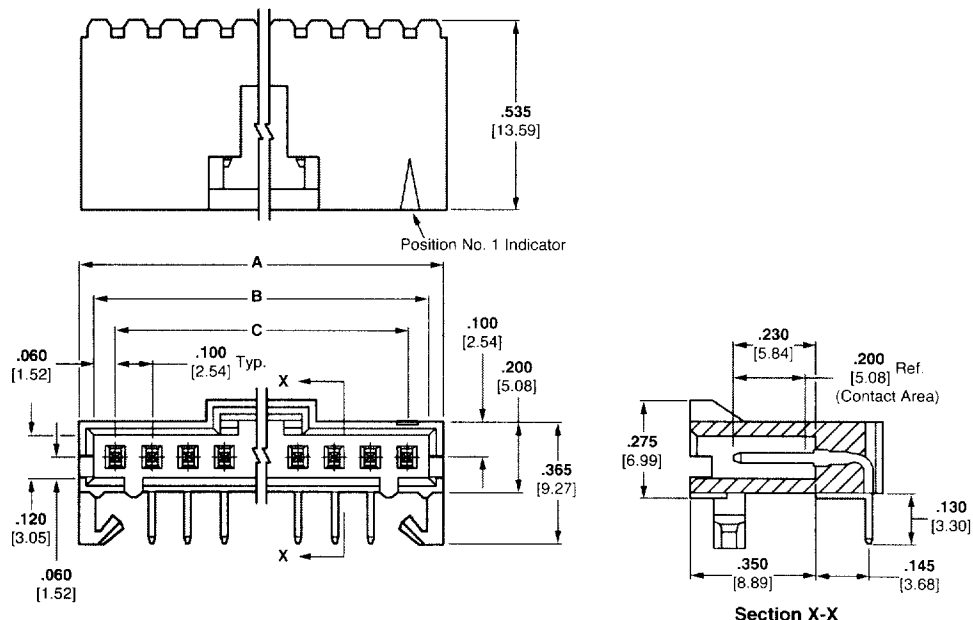
Posts—Copper alloy, plated as follows:

Plating A—Duplex plated .000030 [0.00076] gold on contact area, .000100 [0.00254] min. tin-lead on solder area, with entire post underplated .000050 [0.00127] nickel

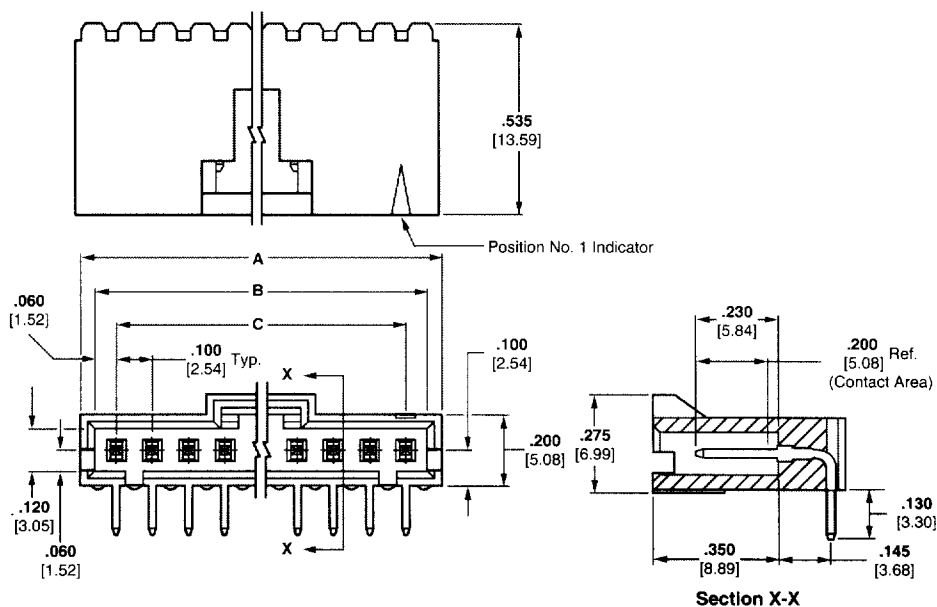
Plating B—Duplex plated .000015 [0.00038] gold on contact area, .000100 [0.00254] min. tin-lead on solder area, with entire post underplated .000050 [0.00127] nickel

Plating C—.000100 [0.00254] tin-lead over .000050 [0.00127] nickel on entire post

With Holddown



Without Holddown



Related Product Data:

Mateable AMPMODU MTE Products:

Receptacle Assemblies (Latching)—pages 2132, 2133
Receptacle Assemblies with Guide Ribs (installed in Single-Row Coupling Shroud)—pages 2134, 2138

Technical Documents: pages 2161, 2162

Product Specification
108-25034

Application Specification
114-25026

For complete product information, order Catalog 1307819

MTE Headers, Shrouded Latching, Single-Row .100 [2.54] Centerline

No. of Positions	Dimensions						Part Numbers					
							Latching Header With Hold Down			Latching Header Without Hold Down		
	A	B	C	Plating A	Plating B	Plating C	Plating A	Plating B	Plating C			
2	.300	7.62	.220	5.59	.100	2.54	103904-1	103673-1	103672-1	103906-1	103635-1	103634-1
3	.400	10.16	.320	8.13	.200	5.08	103904-2	103673-2	103672-2	103906-2	103635-2	—
4	.500	12.70	.420	10.67	.300	7.62	103904-3	103673-3	103672-3	103906-3	103635-3	103634-3
5	.600	15.24	.520	13.21	.400	10.16	103904-4	103673-4	—	103906-4	103635-4	103634-4
6	.700	17.78	.620	15.75	.500	12.70	103904-5	—	103672-5	103906-5	103635-5	103634-5
7	.800	20.32	.720	18.29	.600	15.24	—	103673-6	—	103906-6	103635-6	—
8	.900	22.86	.820	20.83	.700	17.78	103904-7	103673-7	103672-7	103906-7	—	103634-7
9	1.000	25.40	.920	23.37	.800	20.32	—	103673-8	—	103906-8	103635-8	103634-8
10	1.100	27.94	1.020	25.91	.900	22.86	—	103673-9	103672-9	103906-9	103635-9	103634-9
12	1.300	33.02	1.220	30.99	1.100	27.94	—	1-103673-1	—	1-103906-1	1-103635-1	1-103634-1
14	1.500	38.10	1.420	36.07	1.300	33.02	—	1-103673-3	—	—	1-103635-3	—
15	1.600	40.64	1.520	38.61	1.400	35.56	—	1-103673-4	—	—	1-103635-4	—
16	1.700	43.18	1.620	41.15	1.500	38.10	—	1-103673-5	—	—	—	—
20	2.100	53.34	2.020	51.31	1.900	48.26	—	1-103673-9	—	—	—	—

Notes: 1. Selectively loaded headers are available, consult Tyco Electronics.
 2. Use Keying Tool No. 91417-1 to remove post for keying.

For complete product information, order Catalog 1307819