

Distributed by:

**JAMECO**<sup>®</sup>  
ELECTRONICS

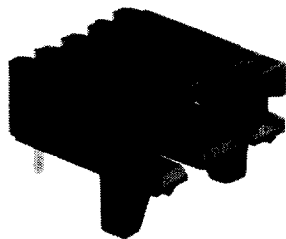
**www.Jameco.com ♦ 1-800-831-4242**

The content and copyrights of the attached  
material are the property of its owner.

Jameco Part Number 738419

### MTE Headers, Shrouded Latching, Single-Row .100 [2.54] Centerline

#### .025 [0.64] Square Right-Angle Post



#### Material and Finish:

**Housing**—Black thermoplastic, 34V-0 rated

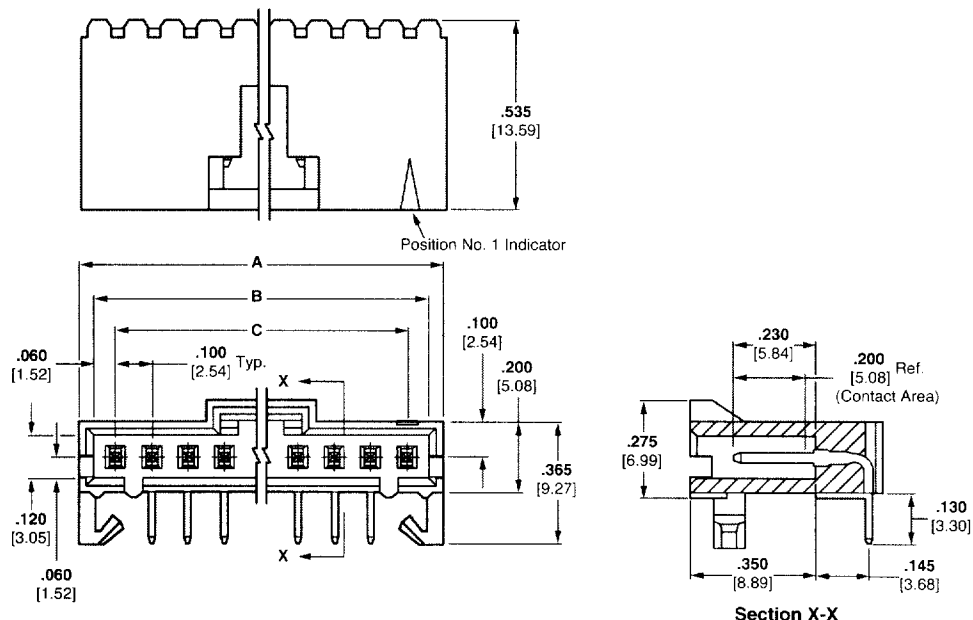
**Posts**—Copper alloy, plated as follows:

**Plating A**—Duplex plated .000030 [.000076] gold on contact area, .000100 [.000254] min. tin-lead on solder area, with entire post underplated .000050 [.000127] nickel

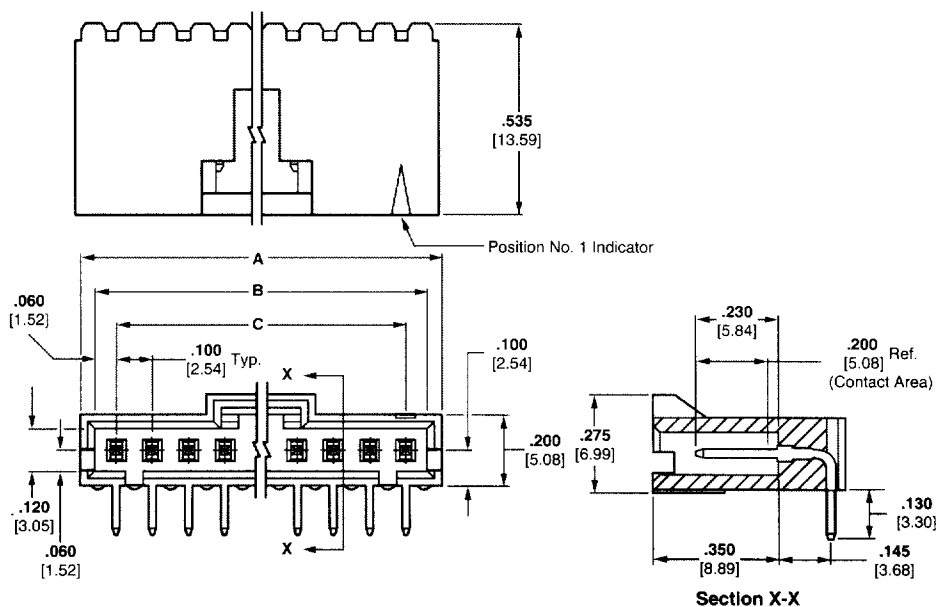
**Plating B**—Duplex plated .000015 [.000038] gold on contact area, .000100 [.000254] min. tin-lead on solder area, with entire post underplated .000050 [.000127] nickel

**Plating C**—.000100 [.000254] tin-lead over .000050 [.000127] nickel on entire post

#### With Holddown



#### Without Holddown



#### Related Product Data:

**Mateable AMPMODU MTE Products:**

**Receptacle Assemblies (Latching)**—pages 2132, 2133  
**Receptacle Assemblies with Guide Ribs (installed in Single-Row Coupling Shroud)**—pages 2134, 2138

**Technical Documents:** pages 2161, 2162

**Product Specification**  
108-25034

**Application Specification**  
114-25026

For complete product information, order Catalog 1307819

### MTE Headers, Shrouded Latching, Single-Row .100 [2.54] Centerline

No. of Positions	Dimensions						Part Numbers								
	A		B		C		Latching Header With Hold Down			Latching Header Without Hold Down					
							Plating A	Plating B	Plating C	Plating A	Plating B	Plating C			
2	.300	7.62	.220	5.59	.100	2.54	103904-1	103673-1	103672-1	103906-1	103635-1	103634-1			
3	.400	10.16	.320	8.13	.200	5.08	103904-2	103673-2	103672-2	103906-2	103635-2	—			
4	.500	12.70	.420	10.67	.300	7.62	103904-3	103673-3	103672-3	103906-3	103635-3	103634-3			
5	.600	15.24	.520	13.21	.400	10.16	103904-4	103673-4	—	103906-4	103635-4	103634-4			
6	.700	17.78	.620	15.75	.500	12.70	103904-5	—	103672-5	103906-5	103635-5	103634-5			
7	.800	20.32	.720	18.29	.600	15.24	—	103673-6	—	103906-6	103635-6	—			
8	.900	22.86	.820	20.83	.700	17.78	103904-7	103673-7	103672-7	103906-7	—	103634-7			
9	1.000	25.40	.920	23.37	.800	20.32	—	103673-8	—	103906-8	103635-8	103634-8			
10	1.100	27.94	1.020	25.91	.900	22.86	—	103673-9	103672-9	103906-9	103635-9	103634-9			
12	1.300	33.02	1.220	30.99	1.100	27.94	—	1-103673-1	—	1-103906-1	1-103635-1	1-103634-1			
14	1.500	38.10	1.420	36.07	1.300	33.02	—	1-103673-3	—	—	1-103635-3	—			
15	1.600	40.64	1.520	38.61	1.400	35.56	—	1-103673-4	—	—	1-103635-4	—			
16	1.700	43.18	1.620	41.15	1.500	38.10	—	1-103673-5	—	—	—	—			
20	2.100	53.34	2.020	51.31	1.900	48.26	—	1-103673-9	—	—	—	—			

Notes: 1. Selectively loaded headers are available, consult Tyco Electronics.  
 2. Use Keying Tool No. 91417-1 to remove post for keying.

For complete product information, order Catalog 1307819